

MHN

Missouri Hereford News
Official Publication of the Missouri Hereford Association



MARCH
2024

Missouri Hereford News
30487 Hwy J
Wentworth, Missouri 64873

Printed
Standard
US Package
PAID
StateGroup



AW STATESMAN 038H

P44177977 Calved: 2/24/2020 Tattoo: BE 038H

EFBEEF TFL U208 TESTED X651 ET (S00){CHB}{DLF,HYF,IEF,MSUDF}

F FINAL TEST 722 {CHB}{DLF,HYF,IEF,MSUDF,MDF,DBF}

F MS YORK 567 {D00}{DLF,HYF,IEF,MSUDF}

MOHICAN THM EXCEDE Z426 {DLF,HYF,IEF,MSUDF,MDF,DBF}

AW LADY EXCEDE 82F {DLF,HYF,IEF,MSUDF}

AW LADY SENSATION 613D (HYP)

- HOMOZYGOUS POLLED!
- DB Free
- Quite possibly the best son of Final Test.
- Heifer approved.
- A high fertility sires with a great disposition.
- Top 3% or better for CE, BW, SCF, UDDR, TEAT and MARB.
- Average progeny ratios for BW 92.2, WW 102.3, YW 102.7
- All \$ values at the top of the breed.

CE	17.1	MM	28	FAT	0.041
BW	-4.2	M&G	58	REA	0.31
WW	60	MCE	5.4	MARB	0.55
YW	89	MCW	70	BMI\$	544
DMI	0.4	UDDR	1.50	BII\$	659
SC	0.8	TEAT	1.50	CHB\$	147
SCF	28.8	CW	65		



SEMEN: \$30/STRAW; \$75/CERTIFICATE.

Volume discount: 20 straws for \$500
 Contact owners or Reed Enterprises,
 660-527-3507.



Missouri State
 UNIVERSITY

Rt 1 Box 85G • Mountain Grove, MO 65711
 Marty Lueck, Manager 417-948-2669
 Cell 417-838-1482 • mvlueck@centurytel.net

INTRODUCING

PREACHER

Registration #44492746

Sire: UPS Entice 9365 ET

Dam: MH 743 Miss Upslope 9537



Russell and Marijane Miller

20500 Sioux Dr. - Lebanon, MO 65536

Russell, cell 317-840-7811 - Marijane, cell 317-341-3846

millerherefords@yahoo.com - www.millerherefords.net

HPI

HELLO FROM THE EDITORS

We hope your 2024 has been off to a great start! The new year has already brought a few national Hereford events, adorable baby calves and hopefully a start to your goals.

The Missouri Hereford Association (MHA) has seen a big change this year; be sure to read through the whole issue! Matt and Barb Reynolds have retired after 21 years serving the organization as Secretary/Treasurer. There has been a change of the guards and your new contact for this role is Andi Howard. We welcome her as she navigates this role, keeping tradition at bay and charting new territories for the association.

The new year is a gift, and we must always remember that each day is a blessing from God. Our Hereford family mourns the loss of so many. As we say goodbye, we would be amiss without thanking Eddie Roth for his services to the MHA. May you rest in peace.

This issue also acknowledges those members who held a special role throughout the year or were recognized for their contributions to the breed or the MHA. Be sure to read the banquet highlights and award winners. Tom Biglieni, or also known as T-Big, was awarded to the Missouri Hereford Association Hall of Fame, a second-generation honorer. His journey through the breed has been interesting and dynamic.

Hoping the spring is near and the rains are bountiful. It seems like this time of year flies by, and yet it's such a gorgeous season of new beginnings. Take in the new leaf colors, flower blooms, baby animals and fresh spring scents. Happy spring!



Photo of the Missouri State University crew at Cattleman's Congress: © Rural Route Creations

Cassie Dorran, editor



Jocelyn Washam, editor



Faye Smith, contributor



This newsletter is edited by
Rural Route Creations
 30487 Hwy J • Wentworth, MO 64873
www.ruralroutecreations.com

Advertisement & News Submissions:
 Cassie Dorran 403-507-5953 cassie@ruralroutecreations.com
 Jocelyn Washam 417-838-5546 jocelyn@ruralroutecreations.com
 A special thank you to Andrea Butler for her office support throughout the year

2024 PUBLICATION DATES

Issue	Ad Space & Material Deadline	Camera Ready Ad Deadline
March 1	January 10	January 20
July 15	May 31	June 7
September 1	July 25	August 5
November 1	September 15	September 25

ADVERTISING RATES:

Advertising rates include design at no extra cost! Two design proofs will be provided by email with each advertisement purchase. If additional changes or inclusions need to be made after the second proof, the advertiser will be billed at \$50 per hour.
Payment can be made on your invoice.

All contracted ads are for the current calendar year.

Color Ad Type	Cost Per Issue	Four Issue Contract Price
Double Page Spread	\$500	\$1800
Full Page Spread	\$300	\$1100
Half Page Spread	\$200	\$700
Quarter Page Ad	\$150	\$500
Business Card Ad	(contract only)	\$200

All ads must be received by deadline!

View the Media Guide Online at moherfords.org for ad sizes, file requirements and material submission. Download InDesign and Photoshop templates for ad designs.



IN THIS Issue

- 4 | Hello from the Editors
- 4 | Publication Dates and Advertising Rates
- 5 | Missouri Hereford Association Officers
- 8 | State Association Update
- 10-11 | Association Achievements
- 12 | Hereford Women of Missouri Update
- 12 | The Ranch Kitchen Recipe
- 14 | Junior Association Update
- 15 | Gregory Weds
- 15 | Junior Association Word from the Advisors
- 16 | Recognition at a National Level
- 20 | Bagnell Weds
- 20 | Roth Obituary
- 24 | Evans Sisters Receive National FFA Degrees
- 24 | Staten Obituary
- 28 & 32 | Show Results
- 34-35 | Sale Results
- 36 | New Missouri Hereford Queen Crowned
- 41 | Advertising Index
- 42 | Calendar Events & Deadlines

18 REFLECTION ON 21 YEARS

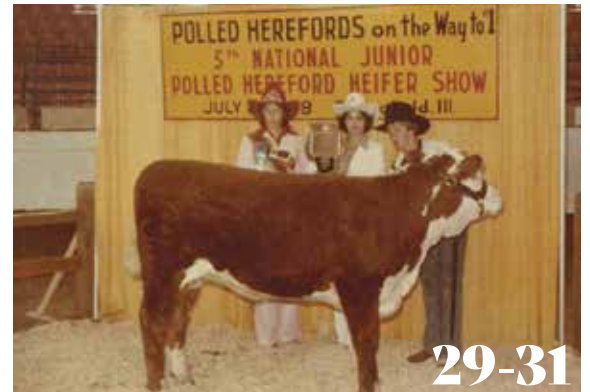
Matt and Barb Reynolds retire after years of service

26 NEW TO THE SCENE

Andi Howard hired as Secretary/Treasurer position for the Missouri Hereford Association

29-31 DEDICATION

Tom Biglieni awarded the 2023 Missouri Hereford Association Hall of Fame Award



MISSOURI HEREFORD ASSOCIATION

OFFICERS AND DIRECTORS MOHEREFORDS.ORG

President	Glen Waters	Norborne	District 1
Vice President	Jon Black	Keytesville	District 2
Secretary/ Treasurer	Andi Howard	Dora	
Directors	Riley Bradshaw	La Belle	District 3
	<i>vacant</i>		District 4
	Eric Adkins	Hallsville	District 5
	Mike Jordan	Warrenton	District 6
	Mike McCorkill	Greenfield	District 7
	Rusty Miller	Lebanon	District 8
	Charlie Beshier	Patton	District 9

To download a Missouri Hereford Association membership application and to view most current events, applications and announcements, visit the Missouri Hereford Association website at www.moherfords.org
Missouri Hereford Association
 Andi Howard
 905 County Rd. 348
 Dora, MO 65637
 417-372-1459
howardandi0@gmail.com



Cover photo by:
© Rural Route Creations



BUILD YOUR NEXT GENERATION

Make Matings with Intent

KINGDOM

29HP0956 | AHA 44267937



DM ALL AROUND 904G ET x EFBEEF BR VALIDATED B413

DEFINING A NEW GENETIC REALM

- » You will not find a truer herd bull look in unison with this kind of data package
- » His dam is the rock star donor 7098 who is creating an absolute buzz in the breed with everything she produces
- » The first progeny did exactly what was expected - arrive unassisted, get up fast, and come with a look that gets producers excited
- » Awesome-fronted, great-balanced, with tremendous fee-use him to 'class up' your herd
- » DNA tested homozygous polled, 100% pigment both eyes



Scan for the most up-to-date EPDs on KINGDOM!



Dam - BR Validated B413 6035 7098



Maternal Sister - Churchill Lady 219K ET

GENERATOR

29HP0958 | AHA 44196588



LOEWEN GENESIS G16 ET x C MILES MCKEE 2103 ET

GENERATE BIG-TIME LOOK AND PERFORMANCE

- » His pedigree blends Genesis, Revolution, 88X, and Sooner with the famous Bailee, Gabrielle, and Notice Me cow families
- » Unbelievably powerful with unparalleled mass and thickness, he is a man amongst boys phenotypically
- » Short-marked, red to the ground and goggle-eyed, he ranks in the top 10% of the breed on 10+ economic traits
- » DNA tested heterozygous polled, 100% pigment both eyes



Scan for the most up-to-date EPDs on GENERATOR!



Sire - Loewen Genesis G16 ET



Dam - C Bailees McKee 4295 ET

For full data set, progeny photos, and more visit Bull Search at ABSbullsearch.ABSglobal.com or contact your local ABS Representative.

BRIAN BRACE

ABS Global District Business Manager
563.260.4971
Brian.Brace@genusplc.com

LORENZEN FARMS

Bulls for Sale



LF MJ 102 Leader 301



MARCH - LIGHT SCURS

**KJ BJ 309C Leader 182F X LF MJ Candy 102
#44534793**

LF PMH 73S Integrity 3010 ET



MARCH - HOMOZYGOUS POLLED

**Innisfall WHR X651/723 4013 ET X NJW P600 72N Daydream 73S
#44500733**

LF 3066 Hampton 3028



MARCH - HOMOZYGOUS POLLED

**CRR 8Y Homegrown 057 x LF 87N MS Ricky 3066 ET
#44500743**

LF R3 7014 Homerun 2240



DECEMBER 23 - HORNED

**CRR 8Y Homegrown 057 X LF Bacon 33Z Holly 7014 ET
#44319815**

LF PMH 1531 United 3009 ET



MARCH - POLLED

**Haroldson's United 33D 36G X Crane JWC Lady Hutton 1531 ET
#44501172**

LF 87N Resource 3097 ET



APRIL - HOMOZYGOUS POLLED

**Harvie Dan Ricochet 167U X MSU TCF Dixie 87N ET
#44501167**

**LF 0125 General 182F
3012**



MARCH - HOMOZYGOUS POLLED

**KJ BJ 309C Leader 182F X LF MS 103P Tempress 0125
#44500740**

LF PMH 8071 Titan 3029 ET



MARCH - HOMOZYGOUS POLLED

**Harvie Dan T-Bone 196T X Perks 23S Milky Way 8071 ET
#44500752**

Call Adam for more information

Watch Facebook for updates



Lorenzen Farms

Adam Harms, Herdsman
Phone: 217-369-9609
Email: adamdharms@hotmail.com

Steve Lorenzen
Phone: 217-822-2803

FB: Lorenzen Farms
Insta: Lorenzen Farms Cattle
Website: Lorenzenfarms.com

STATE ASSOCIATION UPDATE

A successful 2023 Meeting and Banquet while looking ahead to 2024

Written by Glen Waters

As many of your families and farm/ranch operations have done, our family has moved from the bustle of the Christmas season right into the waiting arms of an eager 2024 calendar! I don't think anyone who is reading this note really has any "down time," but rather you simply "shift gears" from one focus to another.

As I write this note, I do want to offer my personal sympathies, as well as those of our entire Missouri Hereford Association (MHA), to Mary Roth, Lane, Levi, and the entire Roth family. We just recently lost Eddie far too early. Eddie has been serving on our MHA Board of Directors, where his leadership and commitment to our breed and industry were evident. In addition, Eddie was a motivated Hereford breeder, working to improve the breed as a whole and his family's herd of cattle, in particular.

I do want to report to you that since our last edition of the Missouri Hereford News (MHN), your association held a successful annual meeting and Opportunity Sale. At our annual meeting on December 2 in Sedalia, we conducted our business, recognized award recipients, and offered a hearty, well deserved thank you to our retiring Secretary/Treasurer, Matt and Barb Reynolds. Long-time Hereford breeder, exhibitor, marketer and enthusiast, Tom Biglieni, was inducted into the Missouri Hereford Association Hall of Fame. Tom is a second-generation MHA Hall of Fame inductee, joining his parents, Charles and Norma Biglieni, who were inducted in 1997.

On the following day, we witnessed one of the more active and successful Opportunity Sale events in recent memory. Consignors had their cattle well prepared and ready to be effectively marketed, and those cattle were well accepted and received active bidding, both in-person and Online. Congratulations to all who participated!

I want to thank Mary Beth Ray and Darrell Aufdenberg for their time of service on the MHA Board of Directors. Both Mary Beth and Darrell termed out of their service time on the board, and we do appreciate their work and efforts on our behalf! In their place, we are happy and excited to welcome Riley Bradshaw of Bradshaw Cattle Company near LaBelle as our District 3 director. Our new District 9 director is Charlie Beshler of Beshler Farms near Patton. In addition, we are happy to have Eric Adkins of Columbia back representing District 5 for another 3-year term.

Since the Opportunity weekend, your MHA Board of Directors has been busy. In that time, we have held interviews to select a new Secretary/Treasurer for our organization. Andi Howard of Dora has been selected and approved to fill this role for our organization. You will read and learn more about Andi in this edition of MHN, but I encourage each of you to reach out to her and get acquainted. She is a "true blue" Hereford fan, I can promise you!

At a recent MHA board meeting, your board of directors made several decisions to respond to desires and opinions expressed by our membership in our recently completed MHA Marketing Survey. Among the decisions was a unanimous

vote to move the date of our annual Opportunity Sale and accompanying annual meeting. You can mark Saturday, November 2 for the MHA

Annual Meeting and Sunday, November 3 for the 2024 version of Missouri Opportunity Sale. This is a move to the first Saturday/Sunday of November. The rationale is this sale date gets us closer to an expressed desire by MHA membership to get our annual consignment sale event placed earlier in the fall. This date accomplishes that goal, without competing with the traditional fall sale dates of our MHA member outfits. This date also traditionally falls between American Hereford Association's Annual Meeting and National Show in Kansas City and the North American International Livestock Show and related events in Louisville. The other decision made by your board, due to feedback from our survey, was to allow members to market groups of commercial red baldy and black baldy females in the Opportunity Sale starting in 2024. We have set up an MHA Board Sale Committee to help put the guidelines for this commercial offering in our Opportunity Sale. Those details will be forthcoming to you.

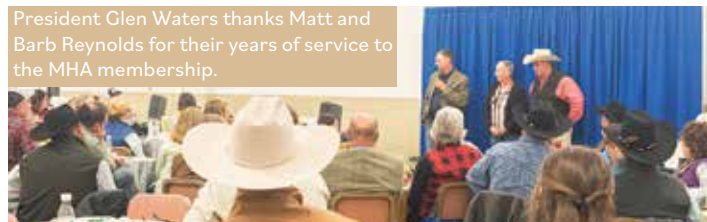
With this news, I do have some thoughts to share with each of you as MHA members. Our events and activities are offered and designed to provide value and benefit to our membership and their customers – that means you, our MHA members, and the cattle buying customers you target to market your Hereford genetics to. The changes to our events and timing of those events are based on the feedback our membership has provided in recent times, both in the marketing survey, combined with many personal conversations. As I have shared with some of you and am now sharing with our entire membership, the monkey is "now on your back." Your association and board will do everything we can to provide a successful Opportunity Sale event in 2024. Now is the time for each and every MHA member to critically evaluate their herd and identify one or two animals that it will "hurt" to let go of and offer those individuals for Opportunity Sale 2024. Participation in a meaningful way is how our association accomplishes its goals and reaches its potential. I am a believer that "a rising tide lifts all boats" ...and this is true regarding the cattle industry as a whole, the Hereford breed in particular and our Missouri Hereford industry specifically. We need each of you to accomplish this!

Please feel free to reach out to me or your local MHA Board of Directors district representative if you have any questions or would like to discuss these changes any further.

Good Selling!



Glen Waters, Missouri Hereford Association - President





Falling Timber Farm

15th Annual

BULL & FEMALE SALE

MARCH 16, 2024 . LIVE AUCTION 5:30PM . AT THE FARM



Selling 40 Bulls and 60 Females



FTF Distinct 326L

Distinct x TH Frontier 174E

CE BW WW YW SCF MM UDDR TEAT
10.4 0.0 67 111 23.4 37 1.1 1.1



FTF Colorado 395L

Colorado x Huth FTF Torque C002

CE BW WW YW SCF MM UDDR TEAT
0.8 3.8 73 114 20.2 26 1.4 1.3



FTF Houston 343L

Houston x Tested

CE BW WW YW SCF MM UDDR TEAT
3.7 1.6 74 118 22.3 36 1.4 1.4



FTF Magnifico 350L

FTF Magnifico 120J x FTF Relevant 831F

CE BW WW YW SCF MM UDDR TEAT
12.5 -1.2 60 86 22.3 36 1.4 1.4



FTF Hitch 381L

Hitching Post x FTF Value Added 556C

CE BW WW YW SCF MM UDDR TEAT
0.8 3.8 78 132 15.1 32 1.4 1.3



FTF Magnifico 358L

FTF Magnifico 120J x TH Frontier 174E

CE BW WW YW SCF MM UDDR TEAT
15.8 -3.1 55 93 24.9 39 1.5 1.5



FTF Untouchable 3210L

FTF Untouchable 046H x FTF Prime Product 513C

CE BW WW YW SCF MM UDDR TEAT
9.2 0.0 63 102 19.2 34 1.5 1.5



FTF Emblazon 3433L

LJR MSU Z311 Emblazon 392E x Hometown

CE BW WW YW SCF MM UDDR TEAT
8.2 1.4 70 111 17.2 34 1.3 1.4



FTF Frank 3126L

FTF Frontier 0705H x Homeland

CE BW WW YW SCF MM UDDR TEAT
1.4 3.9 80 126 22.8 43 1.3 1.2



call or email for a catalog or
view videos online

Glenn & Yvonne Ridder
John, Heidi, Madi & Ben Ridder (636) 358-4161

Falling Timber Farm

Marthasville, MO

www.fallingtimberfarm.com

DVAuction
Broadcasting Real-Time Auctions

ASSOCIATION ACHIEVEMENTS

Missouri Hereford Association hosts annual awards banquet

2023 MHA Hall of Fame Inductee
Tom Biglieni

**2023 Purebred Breeder
of the Year**
Eddie Roth – Roth Hereford Farm



2023 MHA Friends of the Association: Brad and Sherry Hurst
Not pictured: Tom Thompson – Thompson Herefords



2023 MHA Commercial Breeder of the Year:
Ed Jackson – Keithley Hereford Farm



2023 MHA Show Cow-Calf of the Year:
Shingle Oaks Polled Herefords



2023 MHA Show Heifer of the Year: Addison Ward



2023 MHA Show Bull of the Year: Cory Wood



MHA President Award: Glen Waters



MHA Secretary/Treasurer Award: Matt and Barb Reynolds



2022 Missouri Opportunity Sale Consignor Award:
Jared Decker and Family



2023 Outstanding MHJA Members: Peewee - Macen Decker (middle), Junior - Grant Waters (left), Senior - Tory Miller (right). *Not pictured:* Intermediate - Karsyn Kleeman



MJHA Retiring Advisors: Brad and Shannon Mueller



2024 Missouri Hereford Queen: Mary Grace Warden



Hereford Women of Missouri Scholarship Recipient:
Mary Grace Warden



Scott Adam Memorial Scholarship Recipient:
Gavin Rhode



2023 MHA Scholarship Recipient:
Gavin Rhode



2023 MJHA Scholarship Recipient:
Gavin Rhode

WOMEN ASSOCIATION UPDATE

Summer update and looking ahead

Written by Tonya Bagnell

The Hereford Women of Missouri crowned our 2024 Missouri Hereford Queen at the Missouri Hereford banquet on Saturday, December 2, 2023. Mary Grace Ward was crowned not only queen but also was the 2024 Missouri Hereford Women scholarship receipt.

We would like to say a big “thank you” to everyone who donated items to the silent auction. Also, thank you to those of you who donated items for the social hour. A big “thank you” to Shane Jackson, Ellen Mason, Jennifer Kleenman and Kyla Waters for providing the table decorations.

We are always looking for new members to join our organization. Some of the things we support are the

following: the Hereford Queen, a \$250 yearly scholarship award, sponsorship of showmanship during the junior show at the Missouri State Fair, sponsor the social prior to the Hereford banquet and meeting, and provide the table decorations for the tables at the banquet. If you are interested in joining, please send your dues to Marijane Miller; 20500 Sioux Drive, Lebanon, Missouri 65536. Dues are \$15 per year.

Please watch our Facebook page to keep up with all our activities during the year.



Tonya Bagnell, Missouri Hereford Association - Secretary



Beefy Mexican Cornbread

Prep Time 10 minutes

Cooking Time 45 minutes

Serves 8

Ingredients

- 2 lbs of ground hamburger meat, browned and drained with
 - 3 cloves garlic or 1 tsp. garlic powder
 - 1 onion, chopped fine
 - 1 large can green chili's
 - 1 can tomatoes with lime juice and green cilantro
- 2 packages of cornbread, prepared according to directions uncooked (not baked yet)
 - 1/2 cup milk (for cornbread)
 - 2 eggs, beaten (for cornbread)
 - 2 - 4 cups Mexican Blend grated cheese or mild or sharp cheddar

Directions

1. Cook ground beef, garlic and chopped onion until it is browned.
2. Drain excess fat and add can of diced tomatoes and chopped green chili's.
3. In a separate bowl, prepare cornbread according to package directions, reducing milk to 1/2 cup for both packages. Then add cans of creamed corn to mixture for both packages. Set mixture aside.
4. Grease a 9 x 13 inch glass dish and add ground beef mixture.
5. Sprinkle 2 cups of cheese on top and pour cornbread mixture on top of meat.
6. Bake in a 425 degree oven for 45 minutes or until top of cornbread is slightly browned.
7. During the last five minutes of baking add 2 cups of grated cheese on top of cornbread.
8. Allow to cool for ten minutes and cut in to squares.

This southwestern inspired main dish with a base of ground beef and topping of spicy cornbread is so easy to make and a favorite of our families and friends! Featured in The Flavors of Texas: GO Texan Recipes at the 2016 State Fair of Texas.

The Ranch Kitchen Original Recipe - Alise Nolan | theranchkitchen.com

President – Kyla Waters
660-631-0299
Kg4waterz@gmail.com

Vice President – April Miller
816-305-7490
Aprilmiller1732@gmail.com

Secretary – Tonya Bagnell
660-631-2109
Tbagnell6452@gmail.com

Treasurer – Marijane Miller
317-341-3846
millerherefords@yahoo.com

Mail \$15 Hereford Women of Missouri dues to
20500 Sioux Drive,
Lebanon, MO 65536

Queen Co-chairs –
Shelby Bagnell
660-630-3361
Shelby.bagnell@hughes.net

Anna Roth
573-579-7424
anna.roth15@gmail.com

2023-2024 HEREFORD WOMEN OF MISSOURI OFFICERS



Featuring progeny from the 2018 and 2019 Missouri State Fair
Champion female - **BPH WRBU Elvira 497E ET**



BUTLER POLLED HEREFORDS

Jimmie, Andrea & Joel Butler

4195 South Farm Rd. 53 Republic, MO 65738

417-838-4095 *Jimmie* 417-838-3665 *Joel*

417-838-8427 *Andrea*

butlerpolledherefords@hotmail.com

Cody, Jocelyn, Kyla Jo & Harper Grace Washam

30487 Hwy J Wentworth, MO 64873

417-489-5450 *Cody*

417-838-5546 *Jocelyn*

jocelyn.washam@hotmail.com

Open Range Cattle Co.

Kristin Allen • Rogers, AR • 816-729-6305 cell

ksamizzou@yahoo.com

Maternal EXCELLENCE

Private Treaty Sale

Watch for details about our upcoming fall sale

SEPTEMBER 7, 2024

Selling open heifer prospects, fall yearling bulls and bred heifers!

BULLS SIRED BY:

Boyd Power Surge 9024, LCX Perfecto 11B ET,
NJV 79Z Z311 Endure 173D ET, KJ BJ 58Z Contender D56
and KJ GKB 364C Impact 249J ET!

Visit us online: www.butlerpolledherefords.com



Follow us on Facebook and Instagram

JUNIOR ASSOCIATION UPDATE

New officers elected

Written by Kristin Waters

Hello everyone! I hope you all had a good Christmas and a good start to the New Year! The Missouri Junior Hereford Association would like to thank everyone who came to the Missouri Hereford Association banquet and sale and everyone who purchased something out of the silent auction. Congratulations to all the year-end winners who were announced at the banquet. As a reminder for members, the \$15 MJHA dues are due by April 15. Please send those to Taylor Miller by check or Venmo.

Our first big event for the year is the Missouri Cattlemen's Association All-Breeds Show in June. There will be a junior meeting that weekend where we will discuss details relating to the Junior National Hereford Expo in Grand Island, Nebraska where we will celebrate the 25 year anniversary of the show! I hope to see everyone there and wish everyone good luck this show season!



Kristin Waters, Missouri Junior Hereford Association Reporter

President – Mary Grace Warden, Halfway

Vice President – Cade Shepherd, Mt. Vernon

Secretary – Tory Miller, Lebanon

Treasurer – Taylor Miller
Mail \$15 Missouri Junior Hereford Association dues to
20500 Sioux Drive, Lebanon, MO 65536

Reporter – Kristin Waters, Norborne

Fundraising Chairs – Beau Ann Graves, Chillicothe
Karsyn Kleeman, Braymer

Directors – Jorja Ebert, Holt; Addison Ward, Oak Grove

Advisors –

Jeff & Susan Rhode
7765 NW Hwy NN, Stewartville, MO 64490
816-261-4819 Jeff Cell or 816-261-4821 Susan Cell
Susan.rhode@yahoo.com

Marijane Miller & Hayley Miller
20500 Sioux Drive, Lebanon, MO 65536
317-341-3846 • millerherefords@yahoo.com

James & Magan Henderson
278 Potters Rd, Buffalo, MO 65622
magan.henderson@gmail.com

2023-2024 MISSOURI JUNIOR HEREFORD ASSOCIATION



GREGORY
Polled Herefords
Houstonia, MO
Since 1932

**Kevin & Barbara Gregory
and Family**

19469 Houston Road
Houstonia, MO 65333

660-620-3585

gphthereford@gmail.com

Visit Gregory Polled Herefords on Facebook



GREGORY WEDS

*Morgann Gregory marries Austin Fine
Sedalia, Missouri*

Mr. & Mrs. Kevin Gregory announce the marriage of their daughter Morgann Emma Gregory to Austin Hunter Fine. The wedding was October 21, 2023, in Sedalia, Missouri at First United Methodist Church. The reception was held at the Missouri State Fairgrounds. The couple reside in Killeen, Texas.



Austin and Morgann wed in October.

SHOW ME GENETIC SERVICES

Custom Semen Collection
Bull Housing
Semen Storage & Shipping
Breeding Supplies

**PROTECT YOUR INVESTMENT
PUT YOUR BULL IN THE TANK**

8314 E. State Hwy C • Strafford, MO 65757
www.ShowMeGen.com
417-736-2125

A WORD FROM THE ADVISORS

Reflecting on summer cattle shows

Written by Hayley Miller and Marijane Miller

We hope you all had a wonderful Christmas season and have survived the cold snaps of the winter so far. We are gearing up as baby calves are hitting the ground and the smiles it puts on our faces as they run and play. We know many of our Missouri Junior Hereford Association members are also involved in many different spring events from various cattle shows, FFA events, 4-H competitions, and spring sports. We wish each and every one of you good luck in all your events.

As we head into the winter and spring season there are a few events and things coming up to keep in mind. Junior dues are \$15, and they are due by April 15 to be considered for outstanding junior member for 2024. Be sure to mail, or even Venmo to the Missouri Junior Hereford Association. The All-Breeds show will be in June. We will host our meeting and prep for Junior National Hereford Expo (JNHE) "Grand Drive to 25" that will be in Grand Island, Nebraska, July 6-12. Be sure to pay



venmo

close attention to deadlines for entries and events occurring at Junior Nationals.

Marijane Miller has worked on reserving a block of rooms for our members who may be interested in staying together during Junior Nationals. They are at Sure Stay Plus Hotel, 2603 S Locust St, Grand Island, NE. The rate is \$114 per night. Members need to call the hotel at 308-384-4380 and ask for the Missouri Junior Hereford Association block. It is the best deal she was able to get for that week at a block rate.

We also would like to open our state t-shirt designs up for adults and junior members to help us design for the JNHE. If you have an idea, email it to hayleyhereford@yahoo.com. Keep in mind the theme for Junior Nationals and if we stick to 2-3 colors in the design it is more cost effective to print. We hope to have the proof done and prices figured so we can offer these at the Cattlemen's All Breed Show to anyone who would want to order one.

We hope you have a safe and successful spring!



Hayley Miller, Missouri Junior Hereford Association Advisor

RECOGNITION AT A NATIONAL LEVEL

Missouri Hereford Association and Missouri Junior Hereford Association members recognized at the American Hereford Association annual meeting

Adapted from: American Hereford Association



AMERICAN HEREFORD ASSOCIATION HALL OF FAME INDUCTEE **MARTY LUECK**

Marty Lueck, Mountain Grove, Mo., was inducted into the Hereford Hall of Fame. Pictured (front row l to r) are: Bill Goehring, Arora Lueck, Marty Lueck, Vicki Lueck and Harper Lueck. Pictured (second row l to r) are: Andrew Whitson, Tanner Lueck and Tommy Lueck. Pictured (third row l to r) are: Sarah Conner and Eric Lueck.



HEREFORD YOUTH FOUNDATION OF AMERICA SCHOLARSHIP **ISAAC RHODE**

HYFA board members Jill Bielema and Bill King join Isaac Rhode, Stewartville, Mo., the recipient of the 2023 HYFA Scholarship award.



NORTHEAST REGION SHOW AWARDS, HORNED PREMIER EXHIBITOR **ATLEY KLEINMAN**

Northeast Horned Premier Exhibitor went to Atley Kleinman, Wentworth, Mo.



AMERICAN HEREFORD ASSOCIATION

Mark your calendar!
123rd *Semi-Annual Sale*



**CENTRAL MISSOURI
POLLED HEREFORD
BREEDERS ASSOCIATION**

April 13, 2024 • NOON

Interstate Regional Stockyards • Cuba, MO

*70+ lots of bulls, cow-calf pairs, bred and open heifers,
and Hereford influenced commercial females*

New members always welcome!

This sale will be broadcast live on the internet.

DVAuction

Broadcasting Real-Time Auctions

Real time bidding & proxy bidding available.

For more information contact:

Larry Day, Sales Manager

Central Missouri Polled Hereford Breeders Association

660-834-4678 **Home** | 660-621-0812 **Cell**

Email: *cmphba@gmail.com*

Email or call to request a catalog!

www.centralmissouripolledherefords.com 

WHERE THE ROOTS BEGAN

Matt and Barb Reynolds reflect on their past 21 years serving the Missouri Hereford Association

Written by Faye Smith, Rural Route Creations

Matt and Barb Reynolds reflect on their past 21 years serving the Missouri Hereford Association

The 2003 Missouri Hereford Association (MHA) annual meeting was met with a strong winter storm. Matt Reynolds, the newly elected president of that year fought a battle to make it home safely alongside his wife Barb and two children. But the winter storm was half the battle. That year, the association secretary had quit the position, leaving Reynolds without assistance during his presidency.

A few weeks had passed and no association member had any interest in fulfilling the position. After groveling through a board meeting, Reynolds knew he needed to use his leadership elsewhere. By resigning as President and taking over the new Secretary/Treasurer position, Reynolds knew he could use his passion for a purpose.

“Someone told me if you want something done, go find a very busy person because they will get the work done,” Reynolds says. “The love and passion Barb and I have for this breed made it easy to say we will do it for a little while, having no idea we would have done it for twenty years.”

Reynolds provided service to the membership of the MHA and worked closely with the president. This role ensured the success of the association by attending meetings and events, recording keeping of all association business, and upkeep of the finances. Reynolds believes the members are the driving force behind the association.

“If you don’t have a strong, active membership who supports the programs, you are out of luck,” Reynolds says. “I feel we have one of the stronger state associations in the country because of our membership support.”

Aside from the normal duties of his position, Reynolds was tasked with managing the annual Missouri Opportunity Sale. He worked alongside numerous breeders across the state, as well as the staff at the American Hereford Association to ensure a successful sale.

Reynolds associates his success to his wife Barb. Hereford cattle is what brought the two of them together and are a driving force in their marriage. As a team, Barb assisted Matt by translating notes to computer documents, keeping the association registered within the Secretary of State, and day-to-day items that needed to be finished.

“Knowing how associations work at a young age made this easy,” Reynolds says. “It’s not really an easy job, but when you work together as a team and see the growth and success over the past 21 years of this association, it makes you feel like you have coached the membership to a championship organization.”

Building relationships and making connections with the association were some of the greatest memories held by Matt. Working with several individuals throughout the Hereford breed and greater cattle industry made what he called this position “very rewarding.”

Matt and Barb look forward to growing their current operation, Reynolds Herefords in both cow numbers and crop acreage. In addition, they are thankful to be continuing to spend more time alongside their children.

“We especially want to thank everyone for allowing us to serve in this position and wish Andi Howard the best moving forward,” Reynolds says. “We should all feel blessed we have a high-quality leader in President Glen Waters for making this change smooth and professional.”



Matt and Barb Reynolds retire as Secretary/Treasurer after 21 years of service to the MHA.



Matt loves looking at Hereford cattle and always enjoys the state Field Day.



The Cowman's Kind XXVII

MARCH 23, 2024

BULL & FEMALE SALE

VISUAL QUALITY • NUMERICAL EXCELLENCE
MATERNAL HERITAGE



CMF MEDICINE MAN 782K ET

P44468631 / Homozygous Polled

Sire: RST FINAL PRINT 0016 / Dam: CMF 124B DOMINETTE 297D

CED	BW	WW	YW	DMI	SC	SCF	MILK	M&G	CEM	MCW
79	-0.6	67	105	0.7	0.9	19.6	33	66	9.4	88
UDDER	TEAT	CW	FAT	REA	MARB	BMI	BII	CHB		
1.40	1.40	77	0.021	0.57	0.21	408	500	129		



CMF 297D KAISER 790K ET

P44469664 / Homozygous Polled

Sire: RST FINAL PRINT 0016 / Dam: CMF 124B DOMINETTE 297D

CED	BW	WW	YW	DMI	SC	SCF	MILK	M&G	CEM	MCW
10.0	-1.1	68	108	0.7	1.2	16.1	32	67	6.5	85
UDDER	TEAT	CW	FAT	REA	MARB	BMI	BII	CHB		
1.30	1.30	82	0.031	0.80	0.24	368	459	140		



CMF 297D KERNEL 827K ET

P44469746 / Homozygous Polled

Sire: RST FINAL PRINT 0016 / Dam: CMF 124B DOMINETTE 297D

CED	BW	WW	YW	DMI	SC	SCF	MILK	M&G	CEM	MCW
70	0.1	77	120	0.7	1.0	15.2	33	72	5.4	102
UDDER	TEAT	CW	FAT	REA	MARB	BMI	BII	CHB		
1.30	1.30	88	0.081	0.56	0.46	370	486	164		



CMF 369E KOLT 783K

P44447215 / Homozygous Polled

Sire: CMF 333E HITCHING POST 648H / Dam: CMF 3005 RACHEL 369E ET

CED	BW	WW	YW	DMI	SC	SCF	MILK	M&G	CEM	MCW
5.3	3.5	71	113	0.9	0.9	20.9	21	57	2.6	94
UDDER	TEAT	CW	FAT	REA	MARB	BMI	BII	CHB		
1.30	1.30	81	0.081	0.59	0.30	425	529	133		



CMF 282D KING 792K

P44475118 / Homozygous Polled

Sire: CMF 1720 GOLD RUSH 569G ET / Dam: CMF 103B VICTORIA 282D

CED	BW	WW	YW	DMI	SC	SCF	MILK	M&G	CEM	MCW
5.1	1.6	57	90	0.2	1.2	20.0	28	56	2.7	104
UDDER	TEAT	CW	FAT	REA	MARB	BMI	BII	CHB		
1.30	1.30	88	0.041	0.72	0.38	448	540	168		



CMF F006 KOSHER 801K

P44447226 / Homozygous Polled

Sire: CMF 1720 GOLD RUSH 569G ET / Dam: HUTH C070 COLLEEN F006

CED	BW	WW	YW	DMI	SC	SCF	MILK	M&G	CEM	MCW
3.2	3.8	80	134	1.0	1.8	19.9	29	69	3.9	131
UDDER	TEAT	CW	FAT	REA	MARB	BMI	BII	CHB		
1.30	1.40	98	0.071	0.65	0.43	444	564	171		



CMF 306D KINGSLEY 789K

P44447221 / Homozygous Polled

Sire: CMF 1720 GOLD RUSH 569G ET / Dam: CMF 73X ROSE 306D

CED	BW	WW	YW	DMI	SC	SCF	MILK	M&G	CEM	MCW
2.3	2.8	57	94	0.6	0.6	17.9	24	52	0.5	87
UDDER	TEAT	CW	FAT	REA	MARB	BMI	BII	CHB		
1.30	1.40	68	0.011	0.31	0.41	379	474	137		



CMF 28Z KELSO 771K

P44447198 / Homozygous Polled

Sire: CMF 1720 GOLD RUSH 569G ET / Dam: CMF 137W DOMINETTE 28Z

CED	BW	WW	YW	DMI	SC	SCF	MILK	M&G	CEM	MCW
5.6	2.7	73	110	0.6	1.2	23.0	37	74	5.5	79
UDDER	TEAT	CW	FAT	REA	MARB	BMI	BII	CHB		
1.30	1.40	91	0.001	0.88	0.22	484	582	154		



CMF 583H KAMIKAZE 777K

P44447205 / Homozygous Polled

Sire: CMF 1720 GOLD RUSH 569G ET / Dam: CMF E914 DOMINETTE 583H

CED	BW	WW	YW	DMI	SC	SCF	MILK	M&G	CEM	MCW
3.5	2.5	73	117	0.6	1.3	21.3	30	67	1.8	115
UDDER	TEAT	CW	FAT	REA	MARB	BMI	BII	CHB		
1.40	1.40	100	0.051	0.89	0.54	488	607	195		



Rob Helms (731) 571-8213
Steve or Hayden Helms (731) 968-2012
Email: robhelms@netease.net

Auctioneer: Eddie Burks TFL # 4123, TAL # 4990
To request a sale book, contact:

565 CANDY MEADOW FARM ROAD • LEXINGTON, TENNESSEE 38351



Mark Sims
(580) 595-0901
www.simsplusllc.com

BAGNELL WEDS

Shelby Bagnell unites with Ryan Haag Slater, Missouri

Shelby Bagnell and Ryan Haag were united in marriage on Oct. 28, 2024, at the family farm in Slater, Mo.

A reception was held at the Saline County Fairgrounds in Marshall, Mo.

Shelby is the daughter of Bob and Tonya Bagnell of Slater, Mo. Ryan is the son of Lou and Linda Haag of Columbia, Mo.

Shelby is a graduate of Slater High School, University of Missouri-Columbia (MU), with a B.S and M.S in Agricultural Education. She currently holds the role of Agricultural Instructor at Pettis County R-V School in Hughesville, Mo.



Austin and Morgann wed in October.

Ryan is a graduate of Sullivan High School, MU with a B.S. in Animal Science, and a J. D. in Law. He is currently working for Farmer Holdings in Jefferson City, Mo.

They are residing in Marshall, Mo.

Shelby is currently the Hereford Women of Missouri Queen Co-Chair.

MCCORKILL


FAMILY FARMS

Registered Herefords

Mike and Myra McCorkill
417-637-5228
417-838-2073
152 E Dade 92,
Greenfield, MO 65661

Andy, Jenn, Molly & Marylee McCorkill
417-838-0583

Brant, Erin, Knox & Briggs Harvey
417-214-0313





Bulls and Females for sale!

Contact us for details!

ROTH OBITUARY

Missouri Hereford board member Eddie Roth will be sadly missed by many Troy, Missouri

Edgar W. "Eddie" Roth III, 49, of rural Windsor, Missouri, died Friday morning, February 2, 2024, at his home.

He was born December 14, 1974, in Town and Country, Missouri, the son of Edgar Wilmer Roth, Jr., and Carol Anita (Meyer) Roth. On August 14, 1999, he married Mary Elizabeth Henke in Troy, Mo., and she survives of the home.

Eddie graduated from Troy Buchanan High School in Troy, Mo. He worked for the City of Wentzville for several years and then worked laying concrete. After moving to Windsor, he continued working in concrete for Nussbaum Construction before starting his own concrete business. He raised Polled Hereford cattle alongside his father with Roth

Hereford Farm. He was active in the cattle community as a board member for the Missouri Hereford Association and the Henry County Fair. He was a member and Elder at the Trinity Lutheran Church, Clinton.

In addition to his wife Mary, survivors include 2 sons, Lane Roth and Levi Roth; his mother, Carol Roth, Troy, Mo.; a sister, Jennifer Woody (Eric), Troy, Mo.; a nephew, Ethan Woody; his mother-in-law, Judy Henke, Baldwin, Mo.; and several extended family, including brothers and sisters-in-law, aunts, uncles, nieces, nephews, and cousins. He was preceded in death by his father, Edgar Roth Jr.; a sister, Robbyn Roth; and father-in-law, Robert "Bob" Henke.

Funeral services were held Saturday, February 10, 2024, at the Trinity Lutheran Church, Clinton, Mo., with Rev. William Smith officiating. A burial took place Saturday after the service on the Roth family farm. The family suggests contribution to the Missouri Junior Hereford Association in care of the funeral home.



Eddie Roth was a Hereford enthusiast and will be missed.

THE DELUXE PACKAGE

HOMOZYGOUS
P44370488 POLLED

HUTH CLC WF DELUXE K016



TC

CE:	BW:	WW:	YW:	DMI:	SC:	SCF:	MM:	MG:	UDDR:	TEAT:	CW:	FAT:	REA:	MARB:	BMI:	BII:	CHB:
8.4	1.7	83	141	1.1	1.7	23.7	42	83	1.5	1.5	120	0.071	1.22	0.20	523	630	182
		1%	1%		3%	3%	1%	1%	2%	3%	1%		1%		1%	1%	1%

- CHURCHILL SENSATION 028X
- NJW160B 028X HISTORIC 81E ET
- NJW 73S 38W DAYDREAM 160B

• Sire: H B DISTINCT

- LCX PERFECTO 11B ET
- H DS MISS SPICE 8082
- H BL MISS SPICE 613 ET

• R LEADER 6964

- /S MANDATE 66589 ET
- /S LADY DOMINO 0158X

• Dam: HUTH F035 MANDY H029

- MOHICAN THM EXCEDE Z426
- HUTH Z024 MS EXEDE F035
- HUTH X088 DOMINETTE Z024



CONTACT

Ryan Chapman 615.335.3187
JT Woolfolk 731.345.1585

Registered Polled Herefords



CONTACT

Brian Mundy 816.668.4521
bmundy.whisperingwinds@gmail.com
Jake Mundy 816.313.9488
jmundy.whisperingwinds@gmail.com

20509 E. Courtney Atherton Rd.
Independence, MO 64058



Woolfolk Farms

CONTACT

Scott Woolfolk 731.571.739
Johnny Woolfolk 731.225.2620
JT Woolfolk 731.345.1585

- SEMEN PACKAGES AVAILABLE
- CONTACT US FOR DETAILS
- ASK ABOUT VOLUME DISCOUNTS

www.chapmanlandandcattle.com
2090 Old Airport Rd. Nunnely TN, 37137

Rapp Premium Genetics
RIDE FOR THE BRAND

SPRING FUTURITY BULL SALE

3.16.24 at the farm
Rockville, MO



25+ Angus,
Sim-Angus and
Hereford bulls
offered private
treaty!

BULLS OF THIS QUALITY SELL MARCH 16!

Rapp Premium Genetics

Chris and Reba Rapp & family

Rockville, Missouri

C 660.679.1019 R 417.684.2424

rappreba@gmail.com

www.rappremiumgenetics.com



Follow us on Facebook!
Rapp Premium Genetics

H2 BREEDING

and Consulting Services, LLC

Reba Rapp 417.684.2424
Rockville, Missouri
rappreba@gmail.com

Brad Hurst 417.321.2350
Nevada, Missouri



Use Sexcel and the 60/40 Synch to make the right
replacements for your herd!

Contact us today to learn more!



Sexcel® 60/40 Synch is a strategic breeding program that gives you the power to design replacement heifers from the right segment of your cows while maximizing performance and endpoint value of the remainder of your calf crop.

GENETICS FOR THE FUTURE

Exciting things are in store....



Semen Available

WMC 66589 TROJAN BOSS 194H

Reg: P44178749

DOB: 9/3/20

Sire: /S MANDATE 66589 ET

Owned with: WMC Cattle Company

Semen: \$30/unit; \$75 cert



Grandview CMR Ms Maternal 9328

REG: P43007666

DOB: 03/24/2009

Sire: CMR GVP Mr Maternal 156T

Progeny available in 2025!



C&L Loewen Reva X51 20A

REG: P43405267

DOB: 03/22/2013

Sire: KCF Bennett Revolution X51

EMBRYOS FOR SALE! Contact us for details!

N&N Cattle Co. LLC
Jennifer, Piper, Wyatt and
Nathan Norris
2415 State Hwy E
Marshfield, MO 65706
(205) 522-7137

N&N Cattle Co. LLC
Renee and Ken Norris
1046 Myers Rd.
Nauvoo, AL 35578
205-471-5080



FOLLOW US ON FACEBOOK!

N&N Meat Co.

EVANS SISTERS RECEIVE FFA DEGREES

Hannah and Rebekah receive highest degrees bestowed to FFA Members

Indianapolis, Indiana



left to right: Hannah and Rebekah Evans receive American FFA Degree.

Hannah and Rebekah Evans, of Evans Hereford Ranch in Squires, have recently received their American FFA Degrees at the 2023 National FFA Convention in Indianapolis, Indiana.

To earn an American FFA Degree, members must have received their State FFA Degree, have been an active member for the past three years, and have a record of participation in activities at the chapter and state level, along with other requirements. It is the highest degree achievable in the organization, and this honor shows the member's dedication to their chapter and State FFA associations.

Hannah and Rebekah are currently sophomores at College of the Ozarks in Point Lookout, Missouri. They are both majoring in Agricultural Education. When they aren't at college, they like to spend time at home with their Herefords, helping their father, Mark, and their mother, Kelly. In the summer, they show their registered Herefords at fairs across southern Missouri.

MATERNAL HETEROSIS

Increased performance of the crossbred cow relative to the average of straightbred females of the parental breeds.

- + 3.7% Calving rate
- + 3.8% Weaning weight
- + 38.0% Longevity
- + 17.0% Number of calves
- + 25.3% Cumulative weaning weight

American Hereford Association

GHR

GREGORY HEREFORD RANCH

Michael, Amy, Hanna, Emily & Sutton Gregory
10851 Range Line Rd., Houstonia, MO 65333
Phone: 660-287-1616

Robert & Sharon Gregory
12389 Chamberlin Rd., Houstonia, MO 65333
Phone: 660-620-4020

* BULLS FOR SALE *

STATEN OBITUARY

Thoughtful and compassionate are the best ways to describe the life of Carol Staten

Troy, Missouri

Carol Virginia Staten passed away peacefully surrounded by love at Lilac Hill, her Fayette, Missouri farm, on January 19, 2024 after a long struggle with Alzheimer's.

Carol was married to Kenneth E. Staten, the love of her life, and enjoyed a military career that took them on 13 moves in 28 years. After a storied military career, the couple found their dream farm outside of Fayette, Mo. Lilac Hill offered Carol the opportunity to put her research, restoration, interior, and garden design skills to use as she oversaw the restoration of the circa 1830 brick home and grounds. Carol was

preceded in death by her husband Maj. Gen. Kenneth E. Staten.

Services will be held 10 AM, Friday, March 22, 2024, at the Air Force Academy, Colorado Springs, CO, where Carol will be laid to rest next to her partner in life. Memorials may be made to St. Mary's Episcopal Church, Fayette, MO.



Carol Staten was known for her beautiful personality.

28th Annual

SWEIGER FARMS BULL SALE

March 28, 2024 • 6:00 PM

Sale Barn Location: 5900 NE State Route D, Weatherby, MO 64497

75 head of Herefords and Angus sell!

Open House:
Saturday, March 23
Bulls available for viewing



904M • Reg: 44512699
Sire: **SHF BOX TOP 305F**

CE 5.1 BW 1.5 WW 57 YW 93 CW 55 REA 0.16 MARB 0.17



908M • Reg: 44512712
Sire: **SHF BOX TOP 305F**

CE 0.6 BW 3.6 WW 67 YW 114 CW 74 REA 0.50 MARB 0.03



911M • Reg: 44512778
Sire: **SHF ENCORE Z311 217E**

CE 1.9 BW 4.2 WW 68 YW 116 CW 86 REA 0.63 MARB 0.23



433M • Reg: 20857548
Sire: **Sitz Barricade 632F**

CE 5 BW 2.4 WW 75 YW 132 \$M 71 \$W 57 \$F 87



Michael Sweiger: 816-449-0024

Charles Sweiger: 816-724-0492

Find Us on Facebook: @SweigerFarms

www.sweigerfarmsllc.com

Call to request a sale catalog!

Catalog and Videos will be available on our website!

Howard hired as Secretary/Treasurer position for the Missouri Hereford Association

Written by Faye Smith, Rural Route Creations



Andi Howard, MHA Secretary/Treasurer

Achieving a secretary position within an organization is more than what meets the eye. Many in this role are meticulous in maintaining records, have a strong understanding of communication, and most importantly, care about how their role plays into their organization's daily function.

The Missouri Hereford Association (MHA) is pleased to announce the recent hire of Andi Howard, a native of Dora, Mo., to fill the Secretary/Treasurer role of the MHA.

Howard is no stranger to the cattle industry, let alone the Hereford breed.

Growing up on her family's cow-calf operation, Howard and her sister have raised a small herd of purebred Herefords and commercial Angus cattle.

"I have always had a passion for agriculture specifically the beef cattle industry," Howard says.

"Entering the Hereford breed has allowed me to find my true passion within raising purebred cattle."

This passion led her to pursue a degree in the same field. She successfully graduated with her associate degree in agriculture from Missouri State University - West Plains (MSU-WP) in December of 2022. She continued her degree progress at Missouri State University (MSU) where she will graduate with her bachelor's degree in agricultural business, emphasis in finance and management this upcoming May.

Throughout her time as a student, Howard held many on-campus extracurricular and employment positions. She successfully spent time

at MSU-WP as a student ambassador, where she led prospective student visits and informed high school students about their campus. Moving to MSU, Howard was hired as a ranch hand intern for a semester under Journagan Ranch and is a current Shealy Farm student employee, both ensuring the day-to-day care of the animals and farm maintenance.

Howard has enjoyed spending time outside of class and work attending cattle shows, as well as filling her cup with family time and especially giggering trips.

She is most looking forward to her time spent in this position to grow her connections and involvement within the Hereford breed and learn about the association and its operations.

"I would like to have a positive impact on the members of the MHA as I hope to be someone they look to for guidance and support," Howard says. "I hope to inspire the younger members and provide something for them to strive towards."



MLR 209H REUBEN 21G 49L

Sire: CSR 98E Red Rover X651 21G / MGS: KJ BJ 167X SENATOR 818E
CE 4.4; BW 2.7; WW 57; YW 94; DMI 0.3; SC 1.0; SCF 18.6; MM 29; M&G 57;
MCE 0.9; MCW 102; UDDR 1.40; TEAT 1.30; CW 70; FAT 0.031; REA 0.53;
MARB 0.22; BMIS 393; BII\$ 475; CHBS 126
A dark red, goggle eye bull. A grandson of EFBeef Tested X651
out of a top 2-year-old. Lot of style and performance. BW 78 lb.



CSR 14J EXPEDITE 619G 30L

Sire: SR EXPEDITION 619G / Maternal sire: EFBeef BR VALIDARED B413
CE 5.0; BW 1.8; WW 68; YW 105; DMI 0.4; SC 1.7; SCF 24.9; MM 38; M&G 72;
MCE 4.9; MCW 84; UDDR 1.40; TEAT 1.50; CW 77; FAT 0.061; REA 0.67;
MARB 0.50; BMIS 510; BII\$ 624; CHBS 159
Dam is a super freckle faced 2-year-old that has a great future.
30L is deep bodied with great structure. BW 83 lb.

REED FARMS

REGISTERED POLLED
HEREFORDS SINCE 1962

We have a total of

12 Bulls

6 Spring Heifers

All are from predictable,
proven cow families.

Jim and Linda Reed
P.O. Box 126
Green Ridge, MO 65332
660-527-3507 • reedent@iland.net
417-860-3102 cell

Craig, Natalie, Macy, Mallory
and Maggie Reed
P.O. Box 124
Green Ridge, MO 65332
816-820-4282 cell

Videos of bulls available at
www.reedent.com



CSR 24H RIDGE RUNNER 254G 24L

Sire: NJW 139C 103C RIDGE 254G / MGS: NJW 76S 27A LONG RANGE 203D
CE 5.5; BW 1.4; WW 62; YW 98; DMI 0.7; SC 1.4; SCF 22.9; MM 38; M&G 69;
MCE 1.7; MCW 86; UDDR 1.40; TEAT 1.50; CW 70; FAT 0.071; REA 0.35;
MARB 0.08; BMIS 432; BII\$ 515; CHBS 99
Flawless in his structure. Dam is a beautiful cow.
Tremendous herd bull prospect. BW 80 lb.



CSR 67D RIDGE RUNNER 254G 21L

Sire: NJW 139C 103C RIDGE 254G / MGS: EFBeef U208 Sure Bet Z003
CE 5.9; BW 0.1; WW 56; YW 89; DMI 0.6; SC 1.2; SCF 21.5; MM 35; M&G 63;
MCE 2.6; MCW 58; UDDR 1.40; TEAT 1.60; CW 62; FAT 0.051; REA 0.27;
MARB 0.24; BMIS 408; BII\$ 494; CHBS 104
Super dam with a great udder. Has produced several herd bulls.
Strong cow family. BW 80 lb.

APADE

POLLED HEREFORDS



CHURCHILLW4 SHERMAN 2157K ET
P44378036 | DOB: 2/7/2022 | Polled
Sire: KCF BENNETT RESOLVE G595

APH was part of the group that purchased SHERMAN for \$160,000 from CHURCHILL CATTLE COMPANY & W4 RANCH. We think SHERMAN is a game changer. Homozygous Polled & hence his name "BUILT LIKE A TANK" Take a look at his EPD numbers & you can see the balance. Out of a great cow & cow family.

#	CE (%)	BW (lb)	WW (lb)	YW (lb)	DMI (lb)	SC (cm)	SCF (%)	MM (lb)	MG (lb)	MCE (%)	MCW (lb)	UDDR (%)	TEAT (%)	CW (lb)	FAT (in)	REA (sq in)	MARB (deg)	BMI (lb)	BBI (lb)	CHB (lb)
EPD	2.3	1.6	68	106	0.9	2.0	23.7	28	61	1.7	99	1.40	1.80	108	0.091	1.18	0.40	481	501	191
ACC	28	43	45	39	13	33	37	23	-	29	28	36	36	21	26	21	22	-	-	-

We are getting our first calves on the ground from Sherman and Rooster and we are super excited!



APH ROOSTER J31 ET
P44330460 | DOB: 03/01/2021 | Polled
Sire: JDH VICTOR 719T 33Z ET

We think Rooster is one of the best 33Z sons we have raised. Deep bodied, strong down his top and full of muscle. Look at his EPD profile and you will see the balance in this bull. This Dam was Reserve Champion Cow-Calf pair 2015 Junior National out of Trust 100W and Daughter of Remittal Online 122L.

#	CE (%)	BW (lb)	WW (lb)	YW (lb)	DMI (lb)	SC (cm)	SCF (%)	MM (lb)	MG (lb)	MCE (%)	MCW (lb)	UDDR (%)	TEAT (%)	CW (lb)	FAT (in)	REA (sq in)	MARB (deg)	BMI (lb)	BBI (lb)	CHB (lb)
EPD	0.4	0.2	58	99	0.3	1.1	18.8	26	55	4.9	108	1.40	1.40	92	-0.019	0.80	0.08	419	490	154
ACC	35	45	43	43	14	37	35	31	-	36	38	44	44	27	22	27	28	-	-	-

We have semen available for the 2024.

Mark your calendar...

Saturday March 30, 2024

for our private treaty bull sale
 at our new location in *Harrisonville, MO!*

**We will be offering yearling, 18 month
 and two-year-olds.**

We will have pictures and videos coming soon.

Check our website

WWW.ADEPOLLEDHEREFORDS.COM

for more information or give John a call!



JOHN & KAREN ADE
443.366.2951

8640 W 125 N
 WEST LAYFAYETTE, IN 47906



AMERICAN ROYAL

Wednesday, October 22, 2023 • Kansas City, Missouri
OPEN SHOW



Reserve Champion Intermediate Yearling Female
MAV COTTON'S ELVIRA 264K ET
 P444000549 • 6/7/2022
 OWNED BY: Addison Ward, Oak Grove, Mo
Not Pictured:

Reserve Champion Junior Yearling Female
STAG PEARL 9K ET
 P44403642 • 1/5/2022
 OWNED BY: Beau Ann Graces, Chillicothe, Mo



Champion Junior Bull Calf
MH PREACHER 3953
 P44492746 • 2/25/2023
 OWNED BY: Tory J Miller, Lebanon, Mo



Reserve Champion Junior Bull Calf
LCC 238F FORTIFIED 5L ET
 P44469715 • 1/30/2023
 OWNED BY: Haleigh Ferguson, Windsor, Mo

NORTH AMERICAN INTERNATIONAL LIVESTOCK EXPOSITION

Tuesday, November 14, 2023
 Louisville, Kentucky
 OPEN SHOW



Champion Senior Bull Calf
WMC D87 2C MOONSHINE 507K ET
 P44458531 • 10/7/2022
 OWNED BY: Watson and Jett McConaughy, Wasola MO

VALLEY OAKS BULL SALE

MARCH 16, 2024

22715 POOR BOY RD, WARSAW, MO 65355 @ NOON

Selling

- 80 Herd Sire Prospects
 - 50 Age Advantage Bulls
 - 30 Yearling Bulls
- 50 Fall Calving Commercial Bred Heifers
 - Safe to Low Birth Weight Angus Bulls
 - Fetal Sexed and Calving Dates Confirmed

VALLEY OAKS CALF BUY BACK PROGRAM

OFFERING FEEDER CALF BUY BACK PROGRAM AND CO-OP SALES PROGRAM WITH MO-KAN LIVESTOCK AUCTION

CONTACT US

HERD MANAGER, REED GOODEN | GENERAL MANAGER, JEFF GOODEN
 573.282.8798 | REED@VALLEYOAKSANGUS.COM | 573.280.2351 | JEFF@VALLEYOAKSANGUS.COM

☎ 573-280-2351 | 🌐 VALLEYOAKSANGUS.COM | 📍 VALLEYOAKSFARMS

Sire Groups

- CED+12
- BW+0
- WW+81
- YW+174
- DOC+11
- MILK+29
- CW+82
- MARB+.89
- REA+1.18
- SM+52
- SF+139
- SG+66
- SB+205
- SC+318

WILKS REGIMENT 9035
Reg: AAA +*19401188

- CED+6
- BW+1.3
- WW+87
- YW+152
- DOC+24
- MILK+26
- CW+67
- MARB+1.78
- REA+.62
- SM+52
- SF+109
- SG+105
- SB+214
- SC+330

DB Iconic 695
Reg: AAA *19611994

- CED+9
- BW+.9
- WW+80
- YW+138
- DOC+27
- MILK+32
- CW+79
- MARB+.91
- REA+.81
- SM+88
- SF+137
- SG+68
- SB+204
- SC+353

POSS REMINGTON
Reg: AAA +*20060430

- CED+9
- BW+.8
- WW+83
- YW+147
- DOC+24
- MILK+27
- CW+84
- MARB+1.92
- REA+.84
- SM+56
- SF+150
- SG+118
- SB+269
- SC+405

POSS DEADWOOD
Reg: AAA *19597261

DEDICATION

Tom Biglieni awarded the 2023 Missouri Hereford Association Hall of Fame Award

Tom G Biglieni was born in 1962, the same year Biglieni Polled Hereford Farms was started by Charles and Norma Biglieni. Although he was the youngest of six children, Tom was able to reap the many benefits of learning the ropes on the farm. As the Biglieni's Polled Hereford herd grew, cattle shows soon consumed their summer and fall days. It was indeed a family affair with all six kids participating. Already at a young age, Tom was interested in every little detail, born with a competitive nature.

Tom decided very early in his life he wanted his life to be about cattle, Tom's older brother, Bill, and owner of WLB Livestock noted.

"I remember our mother getting frustrated because Tommy was talking about what cows got bred to what bull one morning during 1st grade show and tell," said Bill. "I can still vividly see my little brother coming around the corner of the house, with his head tucked between the handle bars of his mini bike, trying to avoid the loop that was swinging in his direction."

Tom was always taking every account in life to the fullest extent.

Clever, Missouri, was the scene of Tom's first walk into the show ring. He was nine years old and keen as any of his brothers and sisters. Because he was the youngest, he got to choose from the "leftovers" after his siblings had their picks from that year's calf crop. Tom's first class had 30 head in it, and he placed 29th.

Those that know Tom, know even at nine that would not have set well with his plans. So, the next year he made sure he got to pick before there were only leftovers.

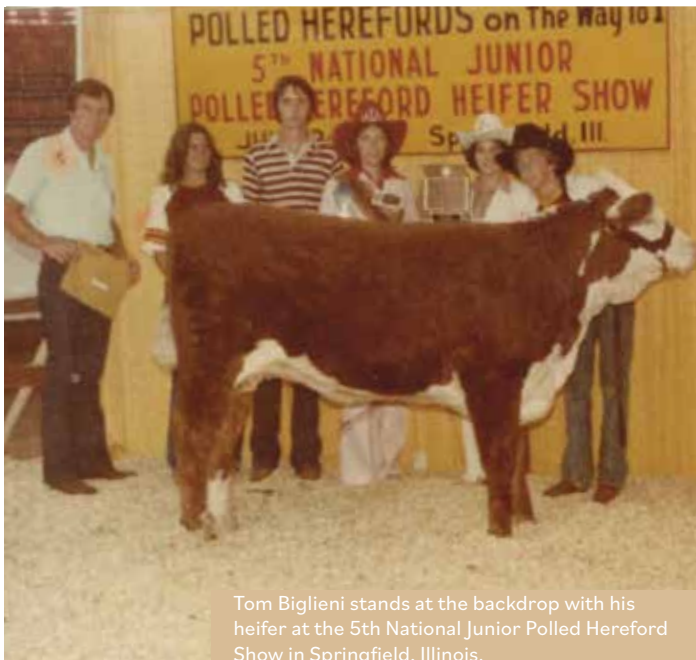
Showing a better heifer got his blood pumping so much that he went to Canada in the fall and purchased a heifer calf he targeted for his first National Junior Polled Hereford Heifer Show in Louisville, Kentucky. This heifer not only won her class but was also reserve champion in her division. Tom also came home from that Louisville trip with the Junior division showmanship award. He was on fire from his first major league show, so he went back to Canada and purchased another heifer from the famous Klondike Farms in Manitoba.

Tom's knack for picking winning show heifers came to light when that Klondike heifer won her class, then her division, and then was named reserve grand champion at the 4th National Junior Polled Hereford Heifer Show in Oklahoma City.

It was 104 degrees that show day afternoon in Oklahoma City and although he was still a junior he had to compete in the older age group for showmanship because as the rules stated, once winning showmanship you could no longer complete in that age group again. So, Tom moved into the Senior Division.

This was the first time grooming was included as part of the competition for the senior division. All senior competitors were given 20 minutes to fit their heifer. Tom proved he could handle the heat and once again brought home the champion showmanship belt buckle, this time winning the senior division.

"I think I probably enjoyed watching Tommy show more than I ever enjoyed showing myself," said Bill. "He seemed to have a knack for making it look easy."



Tom Biglieni stands at the backdrop with his heifer at the 5th National Junior Polled Hereford Show in Springfield, Illinois.



Winning a Reserve Division at the National Junior Polled Hereford Show in 1976, this female was one of the many that helped Tom Biglieni grow his herd and reputation in the breed.



Showmanship always brought out Tom Biglieni's competitive nature, winning the junior and senior division at the Junior National in back-to-back years

Through the years, Tom had numerous class and division winners because of his unique ability of picking good ones. Keeping those winners started his herd and enabled him to eventually win Reserve Grand Champion with a bred and owned.

Shaping his life in agriculture

While Tom certainly had a special feeling for production agriculture from an early age, there was a very specific life tragedy that made this clearer.

A new baler had been delivered to the farm. Of course, Tom and his dad were excited to try it out. The only problem was the tractor company had forgotten to bring the manual. The guys thought they could figure it out but were having trouble getting the twine to work.

As Charles was working through the kinks, he had tripped on a rock, and the next thing Tom saw was his dad's head

stuck in the baler and one arm clear stuck to his shoulder with the other stuck to his elbow. Tom tried to help him out but naturally couldn't, so he ran back to the house. As luck would have it, a dump truck was driving by and saw Tom running, clearing fences. He knew something was wrong, as a child shouldn't have been able to jump a fence.

Emergency crews and neighbors arrived and were able to help Charles out. They wanted to amputate his arm, but Charles wouldn't have it. 45 minutes later, the neighbor got him cut out with a torch. After a 90-day stay in the hospital, he never would have feeling in his arm again but returned home to the farm. For years, Tom remembers the care his mother would give to his dad helping him recover and gain some strength back. His dad was determined and hardheaded enough to eventually be able to carry a bucket of grain with the

arm they wanted to amputate but still with no feeling.

"Tommy has always been there," said Bill. "It was Tommy who ran for help saving our Dad after getting caught in the round baler. It was Tommy who took care of the farm during his two years of recovery, this all before he was 12 years old."

Tom ran the farm while his dad healed for the next two years. Admitting their relationship changed, Tom says his dad became very humble after the tragedy of nearly dying.

As a young boy running a farm, things became clear for Tom. He understood the roles of production agriculture through trial and error. He witnesses the hard work and dedication his dad had given to their farm and way of life. Tom loved the cattle enough to endure the hardships of their family life not exactly being ideal with his father having physical handicaps.

A breeder and marketer

If you ask Tom to name the things he will not forget or that changed his life, one would be the trip to Canada with Leo Journagan and Marty Lueck in 1981 to help Leo pick his first 20 head of Polled Herefords from Klondike Farms. He forged a longtime friendship with Leo and Marty. Traveling that far would bring many stories and camaraderie. Famous cows today at Missouri State University's Journagan Ranch would trace back to these replacements purchased on this trip. The easy fleshing, beautifully-uddered cows have stood the test of time in the Missouri environment.

When asked what the most memorable thing in his life would be, Tom will quickly say it was when his daughter, Brooke, won Grand Champion with her bred and owned heifer at the 25th National Junior Polled Hereford Show in Springfield, Illinois. Another event near the top of that list is judging the junior nationals in 1992 and the National Polled Hereford Show in Ft. Worth, TX.

25 years off and on, Tom worked at Springfield Regional Stockyards and Joplin Stockyards, learning the reality of the importance of having a great herd not just for the show ring but on the commercial side of the industry also.

Working as a sales consultant under the name T Big Consulting with many

Canadian and American Hereford breeders for around a decade was a blessing. The privilege of buying, selling, and helping people breed superior cattle was an honor for him. The close friends he established during this time will forever be a symbol of what the cattle industry has meant to him over the years.

Having worked purebred sales across North America meant seeing new regions, seeing a variety of cattle working in various environments and looking at many superior Hereford cattle along the way.

“I consider it a great privilege to have a brother like Tommy,” said Bill, “to talk cattle with and bounce ideas off of. I ask him for advice; he has always been just a phone call away.”

Even though Bill and Nancy live just down the road from the original

Klondike Farms in Manitoba, Canada, Bill and Tom are literally only a phone call away. When the famous WLB Livestock dispersed their Herefords in 2016, Tom was there helping his brother and consulting for the sale. His expertise and contacts have helped him purchase many cattle on behalf of fellow breeders, influencing their herds and paths forward.

Today, Tom can often be found collecting and trading coins. His coin collection is intense, just like his love for Hereford cattle. It’s likely the competitive nature of finding the “next best one” or “better than” what he has previously found that keeps Tom energized and going back for more! Next time you see Tom, be sure to ask him about his coins. He’s sharing his passion with his daughters and grandchildren now and is proud to announce they

are beginning to ask questions and becoming engaged to start their own coin collections.

Tom resides with his wife Jill outside of St. Louis, Missouri, and with her daughter Inaya who will soon graduate high school. Inaya also enjoyed showing cattle with Tom and enjoyed successes and many memories at cattle shows. While the family sold their cow herd recently, Tom keeps track of the industry and what is going on. His heart will always be with Hereford cattle and the people within the industry.

“It warms my heart to see my little brother recognized by his cattle family,” said Bill. “I’m sure this honor means as much if not more than any belt buckle he ever won.”

And we know those belt buckles would have meant a lot!



left to right: Jill, Inaya and Tom live outside of St. Louis, Missouri.



left to right: Brooke Bailey, Tom Biglieni and Belle Voorhees pose together for a father-daughters picture.



left to right: Tom Biglieni, Nancy Biglieni, Bill Biglieni, Cassie Dorran and Ryan Dorran at the WLB Dispersal



CATTELEMEN'S CONGRESS

Saturday, January, 6, 2024 • Oklahoma City, Oklahoma • OPEN SHOW



Champion Polled Cow/Calf Pair
WBS ADVANTAGE WILMA 006
P44224939 • 03/12/2020
OWNED BY: Haleigh Ferguson, Windsor, Mo



Polled Champion Junior Yearling Female
STAG PEARL 9K ET
P44403642 • 1/5/2022
OWNED BY: Beau Ann Graves, Chillicothe, Mo



Polled Champion Junior Yearling Female
Junior Show
BAG GENEVA 310 ET
P44507635 • 4/20/2023
OWNED BY: Beau Ann Graves, Chillicothe, Mo

Not Pictured:

Reserve Champion Senior Bull Calf
WMC D87 2C MOONSHINE 507K ET
P44458531 • 10/7/2022
OWNED BY: Watson and Jett McConaughy, Wasola MO

Horned Reserve Champion Junior Yearling Female
CCJ 295H ROXANNE 352K
P44386712 • 1/22/2022
OWNED BY: Paisley Nelson, Platte City, Mo

Jordan Herefords

We are a small family owned, operated, sometimes argued over, and often prayed upon operation since 2005!

THE JORDAN FAMILY: MIKE, JESS, JIMMY, NICK, & KYLIE

Contact Us
636-359-3741 314-486-5272
Email: jordanherefords@yahoo.com
www.JordanHerefords.com

VISIT JORDAN HEREFORDS ON FACEBOOK

BRADSHAW RANCH

Bull Sale

3.27.24

Sale held at
Keosauqua Sale Co.
in Keosauqua Iowa

5:30 PM CST

• Selling 20 head of 2-year-old bulls and groups of registered spring open heifers •



B DEBERARD 20100

REG: P44373226 04/16/22 POLLED

Sire: H DEBERARD 7454 ET

LiveAuctions.TV

B DEBERARD 20106

REG: 44373231 05/01/22 HORNED

Sire: H DEBERARD 7454 ET



B DOMINATE 20083

REG: 44370455 03/26/22 HORNED

Sire: SR DOMINATE 308F ET



B/R

BRADSHAW RANCH

Riley Bradshaw

(217) 491-6096

rileybradshaw.23@gmail.com



Follow us on Facebook

SALE RESULTS

417's Finest

Fair Grove, Mo. | Sept. 23

Auctioneer: Mark Sims

Reported by: Joe Rickabaugh, Hereford World

LIVE LOTS AVERAGE

Lots	Gross	Average
44 females	\$146,300	\$3,325
1 steer	\$1,500	\$1,500

TOP FEMALE LOTS

\$6,250 — HPF 745 Bella Leader 055 ET
 DOB 5/5/2020, by R Leader 6964, consigned by High Prairie Farms, Fair Grove; and an August heifer calf, by Gerber High Time H65, sold to Maggie Ewing, Fordland.

\$6,150 — HPF 745 Bella 040 ET
 DOB 3/1/2020, by /S Mandate 66589 ET, consigned by High Prairie Farms, sold to Malone Hereford Farm, Moline, Kan.; and a February bull calf, by Gerber High Time H65, sold to Skyler Storie, Conway.

\$4,500 — HPF 745 Bella 043 ET
 DOB 3/3/2020, by /S Mandate 66589 ET, consigned by High Prairie Farms, sold to Jeremy Bryant, Covington, Tenn.; and an April bull calf, by HPF Mandate 939 ET, sold to Vicki Hill, Fair Grove.

\$4,200 — HPF 404 Miss Times Up 969
 DOB 10/2/2019, by HPF Perfect Timing 404, consigned by High Prairie Farms; and an August heifer calf, by HPF Mandate 939 ET, sold to Kaelyn Keith, Cole Camp.

\$3,900 — Corks AMK Victoria 1481 2015
 DOB 1/29/2020, by Corks AMK Sensation 1635, consigned by Cork Cattle Co., Wentworth, sold to Brad Smith, Lebanon.

Missouri Opportunity Sale

Sedalia, Mo. | Dec. 3

Auctioneer: Cody Lowderman

Reported by: Joe Rickabaugh, Hereford World

LIVE LOTS AVERAGE

Lots	Gross	Average
1 bull	\$4,650	\$4,650
36 females	\$111,750	\$3,104
37 total	\$116,400	\$3,146

TOP BULL LOT

\$4,650 — JSD 1502 9165 Trust 2205
 DOB 3/12/2022, by BR 167Y Trust 9165, consigned by Jaye & Sue Decker, Centralia, sold to Wade Brandi, Fulton.

TOP FEMALE LOTS

\$7,000 — NNC 128D Cowmaker 86E 1035J ET
 DOB 12/8/2021, by Hills-Galore 44Z Resolute 128D, consigned by N&N Cattle Co., Nauvoo, Ala., sold to WMC Cattle Co., Wasola.

\$4,650 — BBH 602D 701E Sweet Heart 906G
 DOB 3/18/2019, by BBH 402B 6964 Bandit 701E, consigned by Bourbeuse Bend Herefords, Beaufort, sold to Wyatt Carrender, Jefferson City; and a February heifer calf, by FTF Performer 1207J, sold to Rustic Herefords, El Dorado Springs.

\$4,500 — WPHB261DJ Cashs Crown 302F
 DOB 3/2/2018, by KCF Bennett Summit B261 ET, consigned by Wirthmor Polled Herefords, Willow Springs, sold to Mike and Joy Simon, Sedalia; and a February heifer calf, by Behm 100W Cuda 504C, sold to Day's Family Farm, Pilot Grove.

\$4,200 — STET 2296 Sweet Caroline 8205
 DOB 9/27/2018, by UPS Sensation 2296 ET, consigned by Waters Farm, Norborne; and a September bull calf, by PCC 7009 173D Maverick 0183 ET, sold to Barb and Jerry Creason, Cowgill.

"A Tradition That Works"

College of the Ozarks
 Point Lookout, Missouri

Aaron Crosby
 Farm Manager
 (417) 300-1817

HARD WORK U

Mark your calendar for our upcoming production sale in November 2025!

Reynolds Herefords Sale

Huntsville, Mo. | Oct. 22

Auctioneer: Cody Lowderman

Reported by: Joe Rickabaugh, Hereford World

LIVE LOTS AVERAGE

Lots	Gross	Average
14 bulls	\$37,050	\$2,646
40 females	\$138,870	\$3,472
54 total	\$175,920	\$3,258
21 comm. females	\$38,400	\$1,829
2 steers	\$3,200	\$1,600

TOP BULL LOT

\$5,800 — RH Pride 2310

DOB 1/7/2023, by AW Statesman 038H, sold to Lenth Herefords, Postville, Iowa (1/2 interest).

TOP FEMALE LOTS

\$5,200 — RH Ms Ritzy 012H

DOB 2/6/2020, by R New York 5083; and a February heifer calf, by ABRA 88X 113 Ribeye 88E ET, sold to Circle R Cattle Co., Huntsville.

\$5,100 — APH Miss Jacey G202 ET

DOB 8/14/2019, by JDH Victor 719T 33Z ET; and a September bull calf, by C&L RR KJ 364C Jalapeno 973E, sold to Mueller Farms LLC, Perryville.

\$5,050 — SF 1690 Hazel 129

DOB 3/1/2021, by APH Gunfighter F1690 ET, sold to Steinbeck Farms, Hermann; and a January heifer calf, by RH 7056 Victor 2137, sold to Holly Weisberg-Louk, Webster City, Iowa.

\$4,800 — SF D1 Rhonda 8133

DOB 12/6/2018, by MPH Z311 Rampage D1, sold to Ade Polled Herefords, West Lafayette, Ind.; and a January heifer calf, by AH JDH Cracker Jack 26U ET, sold to Day's Family Farm, Pilot Grove.

WMC Cattle Co.

Wasola, Mo. | Sept. 24

Auctioneer: Eddie Burks & Dustin Layton

Reported by: Joe Rickabaugh, Hereford World

LIVE LOTS AVERAGE


Lots	Gross	Average
2 bulls	\$8,300	\$4,150
64 females	\$355,550	\$5,555
66 total	\$363,850	\$5,513

TOP FEMALE LOTS

\$30,500 — RMB B413 Southern Belle 738H

DOB 1/30/2020, by EFBeef BR Validated B413, sold to Brad Shockley, Buffalo; and a March heifer calf, by WMC 128D Relentless 17H, sold to GKB Cattle, Desdemona, Texas.

\$13,800 — WMC 10E D303 Vaca 113J



Circle Y
HORNED HEREFORDS

10 two-year-old bulls for sale by private treaty
Call for details!

Steve & Rhonda Yarick and daughters
Rich Hill, Missouri
H: 660-643-7463 C: 417-448-9995
CircleYHerefords.com

DOB 2/24/2021, by WMC Z210 Auggie 10E, sold to Roth Hereford Farm, Windsor; and a February heifer calf, by SHF Houston D287 Ho86, sold to Chapman Land & Cattle, Nunnely, Tenn.

\$13,700 — CMR 200Z Wendy H116 ET

DOB 3/12/2020, by JS Mandate 66589 ET, sold to Matt Gillespie, Oxford, Ohio; and a March heifer calf, by CMR 051 Devout 21243 JW ET, sold to GKB Cattle.

\$12,300 — CMR 33Z B220 Suzy G27

DOB 1/20/2019, by JDH Victor 719T 33Z ET, sold to Joey Skrivanek, Caldwell, Texas; and a February heifer calf, by JW B716 Devout 20183, sold to Roth Hereford Farm.

\$7,700 — MHF 167Y Reva 20A F19 ET

DOB 2/18/2018, by NJW 33TB 100W Trust 167Y, sold to Annaleigh Mead, Concord, Ark.; and a March bull calf, by WMC 128D Relentless 17H, sold to Shannon Henderson, Greenbrier, Ark.

\$7,500 — HCC Miss Arapaho 024 H ET

DOB 3/16/2020, by HCC Arapaho 6037 ET, sold to Parker Bros., Bradyville, Tenn.; and a February heifer calf, by WMC 128D Relentless 17H, sold to CES Polled Herefords, Wadley, Ga., and Predestined Cattle Co., Wadley, Ga.

New Missouri Hereford Queen Crowned

Written by: Mary Grace Warden, Missouri Hereford Queen

Hello! My name is Mary Grace Warden, and I am 19 years old! I am from Bolivar, Missouri, and am a freshman at Missouri State University. I am pursuing a degree in Agricultural Education. I am very active in my community and school. In high school and even now I was very active in FFA and other activities. I am a member of my local Cattlemen's Association and the Missouri State Cattlemen's Association. I am also a member of the Missouri State Sigma Alpha XI Sorority and the Block and Bridle Club. I love my school, and I cannot wait to graduate and be able to teach students what agriculture and our cattle industry is really about.

I started showing our amazing Hereford breed when I was seven, and I

have loved every second I have been in the industry. I would not be the person I am today if I had not grown up in this breed. This breed has taught me life and leadership skills. The Hereford breed is like no other breed; we are a big family where everybody helps everyone succeed. Whether it is inside or outside the show ring you can always see breeders helping other breeders and showmen. We share and support each other for our breed's success. As your Hereford Queen I want to continue this type of sportsmanship in our breed. So, if there is anything any breeder needs from me, I will do the best I can to help. I am so very blessed and honored to be your Missouri Hereford Queen.



Mary Grace Warden

“Hereford Weekend”

November 2 & 3 | Sedalia, MO

Nov. 3 - Annual Meeting & Banquet

Nov. 4 - Missouri Opportunity Sale

THA 173D GIBBS 026J P44292918

Sired by:
ENDURE 173D ET

MGS:
REVOLUTION 4R

RANKS IN THE
TOP 1% FOR
WW, YW, CW & REA

RANKS IN THE
TOP 2% FOR
MG, BMI & BII

TRIPLE H
Acres

THE JACKSON FAMILY
MILLER, MISSOURI
CELL: 417-827-1049
ELLEN CELL: 417-827-0338
TRIPLEHACRES@LIVE.COM

OWNED WITH:
**ELLIOTT BROTHERS
LIVESTOCK**

FOLLOW US
ON FACEBOOK

MEAD FARMS

Performance Tested Bull Sale

Saturday, March 2, 2024

Noon • Mead Sale Headquarters • Versailles, MO



MEAD P145 of M453 X651

A prominent donor of Mead Farms

Proven, Predictable Genetics with added Value!

WWW.MEADFARMS.COM

Plan to be at two great sales!



Over 100 head sell!

**Angus, Charolais,
Red Angus & Hereford**

60 Herefords: 20 Fall Bred Cows, 20 Spring Cow/Calf Pairs,
10 Bred Heifers - Fall and Spring and
10 Breeding Aged Bulls

Over 250 head sell!

**Angus, Charolais,
Red Angus & Hereford**

**Every Bull DNA PARENT VERIFIED with
GENOMIC ENHANCED EPDS!**

Mead Farms is committed to producing sound, functional
cattle that will perform in every environment.

"Performance-Oriented" and "By the Numbers" approach
consistently producing high quality genetics in volume!



since 1942

21658 Quarry Lane

Barnett, MO 65011

Office (573) 302-7011

Fax (573) 348-8325

email: meadangus@yahoo.com

Alan Mead, Owner

(573) 216-0210

Call or email to request a sale book
and join our mailing list!

View and bid online:

DVAuction
Broadcasting Real-Time Auctions

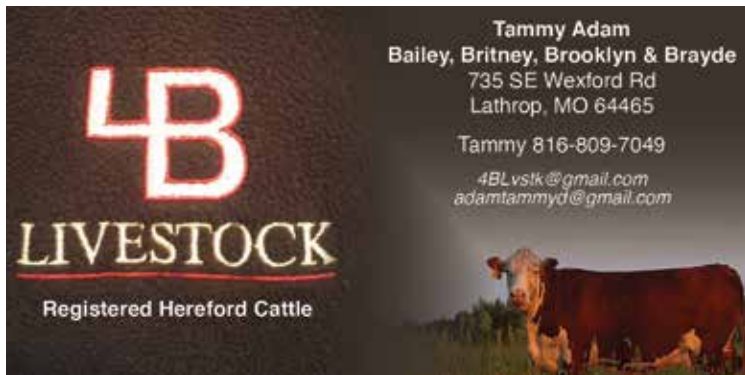
MEAD FARMS

Production Sale

Saturday, May 11, 2024

Noon • Mead Sale Headquarters • Versailles, MO

District 1: Director – Glen Waters



4B LIVESTOCK
Registered Hereford Cattle

Tammy Adam
Bailey, Britney, Brooklyn & Brayde
735 SE Wexford Rd
Lathrop, MO 64465
Tammy 816-809-7049
4BLvstK@gmail.com
adamtammyd@gmail.com

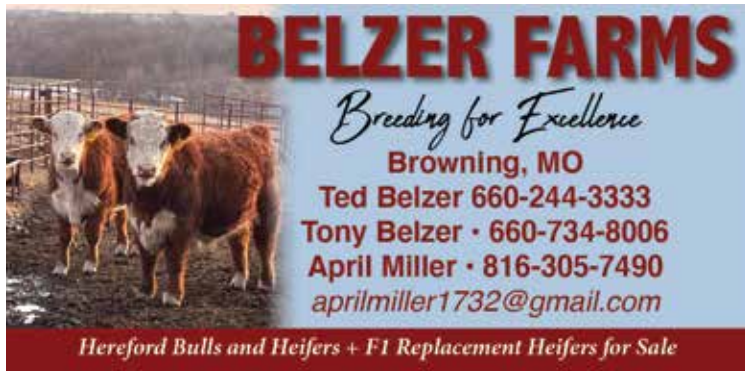
District 3: Director – Riley Bradshaw

NATION POLLED HEREFORD

William R. Nation & Family
45933 Audrain Rd. 548
Vandalia, MO 63382
573.473.8646 cell 573.594.2960
wrnation@windstream.net

Performance Cattle for Sale

District 2: Director – Jon Black



BELZER FARMS
Breeding for Excellence
Browning, MO
Ted Belzer 660-244-3333
Tony Belzer • 660-734-8006
April Miller • 816-305-7490
aprilmiller1732@gmail.com

Hereford Bulls and Heifers + F1 Replacement Heifers for Sale

District 4: Director – vacant



H&H Herefords

Brad, Sherry,
Justin & Meagan Hurst
Nevada, MO
417.321.2350 Brad
417.321.0423 Sherry
h2herefords4@gmail.com



Black LABEL GENETICS
Jon and Brett Black
Keytesville, MO
Brett Cell | 660-651-8510
Jon Cell | 660-308-0125
Email: brett8510@gmail.com

Missouri Hereford Association Districts



REYNOLDS HEREFORDS
23rd Annual Production Sale
SUNDAY, OCTOBER 20, 2024

MATT, BARB, MAKAYLA, TYE & LAUREN
1071 CO. RD. 1231 • HUNTSVILLE, MISSOURI
MATT: 660.676.3788 • MAKAYLA: 660.676.9882
REYNOLDSCATTLE@CVALLEY.NET

Like us on Facebook
WWW.REYNOLDSHEREFORDS.COM




Waters Farm
Glen, Kyla, Kristin & Grant Waters
23795 D Hwy
Norborne, MO 64668
660.484.3127 home phone
660.707.3646 mobile phone
gwaters@landolakes.com

Upcoming Field Days

- | | |
|------------------|------------------|
| 2024: District 8 | 2029: District 3 |
| 2025: District 1 | 2030: District 9 |
| 2026: District 7 | 2031: District 4 |
| 2027: District 6 | 2032: District 2 |
| 2028: District | |

District 5: Director – Eric Adkins



Larry and Pam Day
12139 Hwy 135, Pilot Grove, MO 65276
660-834-4678 home 660-621-0812 cell
Email: ljd@land.net
www.daysfamilyfarm.com




Celebrating 62 Years in the Hereford Business!

District 6: Director – Mike Jordan

ARPH


573-824-5945
573-579-3473



Dale & Lindy Roth
Colt & Anna Gipson

AMR

573-576-5141
573-275-2756



Registered Hereford & Charolais Cattle

Alex, Michaela,
Henley & AllieJo Roth



GRAYSON CATTLE CO.


Jarrold, Krista and Kaylee Grayson
20372 C.R. 6380, Newburg, Mo. 65550
Jarrod cell 417-597-2524
Email: jgrayson81@hotmail.com



www.graysoncattleco.com

Bourbeuse Bend Herefords

Jerry & Cheryl Voss
Blake, Jordann & Amelia Voss
573-368-9001 (Blake)



Beaufort, MO

"Today's Cattle With Tomorrow's Genetics"

LUDWIG FARMS



Dale, Rhonda, Trent, Claire & Troy
Linn, MO
Phone: 573-338-6000
Email: ludwigdale@yahoo.com

HERD SIRES
Ludwig Catapult X-Box C21 ET
Ludwig Trust Ranger C19

AI SIRES
KFC Bennett Trust B279 • Endure
Final Test • Jalapeño

KAUFLIN FARMS

REGISTERED POLLED HEREFORDS



VINCE & PAM KAUFLIN
573-431-5779
573-768-0194
kaufflinfarms@gmail.com

5232 State Route C • Bonne Terre, MO 63628

ROCKING F POLLED HEREFORDS

Frank and Pam Flaspohler
222 County Road 402
Fayette, Missouri 65248
Phone: 660-537-4809
E-mail: fwf@rockingf.com



District 7: Director – Mike McCorkill

Blue Ribbon Farms

11768 W. Farm Rd. 34 • Walnut Grove, MO 65770



Jeff & Stephanie Rawie
417-209-5538 • jeffrawie24@yahoo.com
Aaron, Kylie & Jameson Noble

PRODUCING POLLED HEREFORD SEEDSTOCK



Triple A Farm

Eric, Pamela, Will, Ruth & Wes Adkins
Hallsville, Missouri
573-819-8585
ericadkins05@gmail.com

Advertise Here

Contact Jocelyn Washam at 417-838-5546 or jocelyn@ruralroutecreations.com to place your advertisement!

District 7: Director – Mike McCorkill



Gary and Frances Duvall
 1082 Hwy 97 • Lockwood, MO 65682
 417-827-2163 Cell
 duvallherefords@keinet.net

Herdsmen: Miguel Cifuentes 417-793-5082



Hancock Farms
 Shannon, Janieca,
 J.W. & Emma
 Bolivar, Missouri
 Phone: 417-327-6718
 Email: hancockfarm97@gmail.com



Holmes Hereford Farm
 Greg & Vicki Holmes
 56 State Hwy A
 PO Box 482
 Wheaton, MO 64874
 Phone: 417-652-7463
 Cell: 417-848-9010
 holmesfs@windstream.net

Horned & Polled Herefords

Visitors Are Always Welcome



The Shepherd Family
 Jay, Crystal, Cade, and Camryn
 Mt. Vernon, MO 417-388-0143

S and S Farms : Jim and Sharon
 Aurora, MO 417-489-1634

NLCC : Terry, Megan, & Hilly
 Linn, MO 573-480-9204



McMillen's
Toothache Ranch
 • Registered Hereford Cattle •

Trent & Mary McMillen & Family
 9128 W. Farm Road 30
 Walnut Grove, MO 65770
 417-830-7257 cell
 5inthehive@gmail.com




Chris McCown
 RR 4 Box 1171, Ava Mo. 65608
 Cell 417.230.6556
 tbmjim99@gmail.com

WWW.MPHHEREFORDS.COM

From our family to yours.
 Quality Herefords!


In God We Trust, all our Cattle we Monitor.




SHOENBERGER
 POLLED HEREFORDS
 Est. 2003

ERIC, JR. AURORA, MO **ERIC & KAMI**
 417-860-7151 417-737-0055
 SPHEREFORDS@OUTLOOK.COM

District 8: Director – Rusty Miller



BONEBRAKE
 REGISTERED
 HEREFORDS
 EST. 1936



Al Bonebrake
 5943 E St. Hwy. YY Springfield, MO
 Phone: 417-849-1324

James Henderson, Herdsman
 417-588-4572 cell
 jameswhend@gmail.com



Reg. Hereford and Angus Bulls
 and Replacement Heifers For Sale

Josh & Mindy Menzies
 5667 State Hwy. 38 • Marshfield, MO 65706
 417.425.5659 • jmenzies79@gmail.com

BULL & FEMALE SALE NOVEMBER 2, 2024 • AT THE FARM



NETWORTH
 FEEDS
 & FEEDING

Contact Frank or Cami at the store 333-729-6070 or cell 573-247-1022 or 573-247-5506 with any questions or email at networthfeedsllc@outlook.com

- Heifer Development
- Bull Development
- Backgrounding of steers and commercial heifers
- Marketing Assistance
- Custom Blended Feeds

District 9: Director – Charlie Beshar

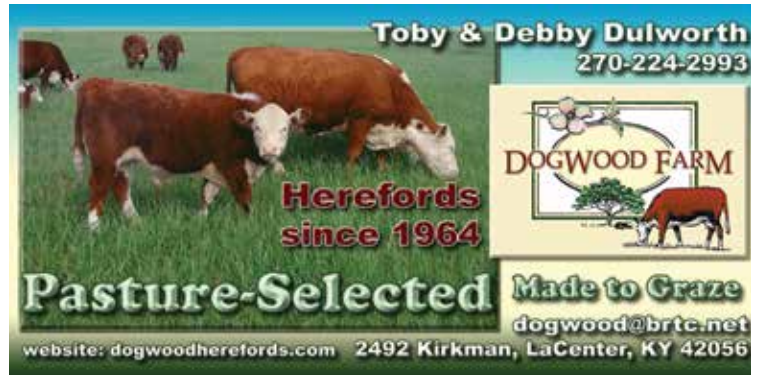
Out of State



APH
Aufdenberg
Polled Herefords

Darrell Aufdenberg
Jackson, Missouri
(573) 270-6755 cell
aufdenbergd@yahoo.com

Quality You Can Count On



Toby & Debby Dulworth
270-224-2993

DOGWOOD FARM

Herefords
since 1964

Pasture-Selected Made to Graze

dogwood@brtc.net
website: dogwoodherefords.com 2492 Kirkman, LaCenter, KY 42056



LPH

Lizzie's Polled Herefords
Polled & Horned Genetics

Kenny, Michelle & Lizzie Spooler • 573-270-4145
1788 Co. Rd. 347 Jackson MO, 63755 • lphspoolerfarms@aol.com



MALONE
Hereford Farm

1371 Road F ~ Emporia, KS 66801
Phone/Fax: 620-342-7538
Alton's Cell: 620-794-2358
ammalone@lcwb.coop

Alton, Marie, Brian and Dustin Malone

find us online at
MOHEREFORDS.ORG



Shingle Oaks
Polled Herefords

8052 Andy Road Waterloo, IL 62298

Eric, Cindie, Cassie & Krista Allscheid
618-593-9642 soph@htc.net

www.shingleoakspolledherefords.com

ADVERTISER INDEX

4B Livestock	38	Dogwood Farm	41
ABS	6	Duvall Polled Herefords	40
ADE Polled Herefords	27	Falling Timber Farms	9
ARPH/AMR	39	Grayson Cattle Company	39
Aufdenberg Polled Herefords	41	Gregory Hereford Ranch	24
Belzer Farms	38	Gregory Polled Herefords	14
Black Label Genetics	38	Hancock Farms	40
Blue Ribbon Farms	39	H&H Herefords	38
Bonebrake Herefords	40	Holmes Farm Supply/Herefords	40
Bourbeuse Bend Herefords	39	JCS Livestock	40
Bradshaw Ranch	33	Jim D. Bellis Family Herefords	44
Butler Polled Herefords	13	Jordan Herefords	32
Candy Meadow Farms	19	Kauflin Farms	39
Central Missouri Polled Hereford Breeders Assoc.	17	Lizzie's Polled Herefords	41
Circle Y	35	Lorenzen Farms	7
College of the Ozarks	34	Ludwig Farms	39
Day's Family Farm	39	Malone Hereford Farm	41
		McCorkill Family Farms	20
		McMillen's Toothacre Ranch	40
		Mead Farms	37
		Menzie Cattle Co.	40
		Miller Herefords	3
		MPH McCown Polled Herefords	40
		Missouri State University LJR	2
		Nation Polled Hereford	38
		Networth Feeds and Feeding	40
		Open Range Cattle Co.	13
		Rapp Premium Genetics	22
		Reed Farms	26
		Reynolds Herefords	38
		Rocking F Polled Herefords	39
		Shingle Oaks Polled Herefords	41
		Shoenberger Polled Herefords	40
		Show-Me Genetic Services	15
		Steinbeck Farms	42
		Sweiger Farms	25
		Triple A Farm	39
		Triple H Acres	36
		Valley Oaks	28
		Waters Farm	38
		Whispering Winds Farm	21
		WMC Cattle Company	43

Calendar

EVENTS & DEADLINES

MARCH

- 2** Mead Farms Bull Sale
Versailles, Missouri
- 16** Falling Timber Farm 15th Annual Bull & Female Sale
Marthasville, Missouri
- 16** Rapp Premium Genetics Ride for the Brand Spring Futurity Bull Sale
Rockville, Missouri
- 16** Valley Oaks Bull Sale
Warsaw, Missouri
- 23** The Cowman's Kind XXVII Bull & Female Sale
Lexington, Tennessee
- 27** Bradshaw Ranch Bull Sale
Keosauque, Iowa
- 28** 28th Annual Sweiger Farms Bull Sale
Weatherby, Missouri

- 30** ADE Polled Herefords Private Treaty Bull Sale
Harrisonville, Missouri

APRIL

- 1** Final State Association Dues Deadline (for awards)
- 13** CMPHBA 123rd Semi-Annual Sale
Cuba, Missouri
- 13** NJHA Fed Steer Shootout Field Day
Scott City, Kansas

MAY

- 11** Mead Farms May Production Sale
Versailles, Missouri
- 15** Junior National Hereford Expo earlybird entry deadline

JUNE

- 1** Junior National Hereford Expo final entry deadline
- 7-9** MCA All-Breeds Show
Sedalia, Missouri

JULY

- 6-12** Junior National Hereford Expo
Grand Island, Nebraska



FOLLOW OUR ASSOCIATIONS ON FACEBOOK!

From the Heart of our herd

**Selling in the CMPHBA Sale
April 13, 2024 in Cuba, MO!**



Endure 173D daughter (Reg # 44173173) sells with a Hitching Post bull calf at side.



TH Frontier 174E daughter (Reg # 44173184) sells with a SF 173D Commitment bull calf at side.

STEINBECK FARMS

Rick and Laurie Steinbeck | Hermann, MO
573-680-0954 cell 573-237-2668 home

Outstanding set of Hitching Post yearling bulls available by private treaty. Call for details.

WMC_{D87 2C}
MOONSHINE 507K ET



REG: **44458531** POLLED

DIVISION CHAMPION
AT NAILE & RESERVE
DIVISION AT OKC!

\$30/Straw - \$60/Certificate

UPS SENSATION 2296 ET
KLD RW MARKSMAN D87 ET
RW MINDY 3078 6096
GV CMR X161 TIMES UP A152
WMC A152 9328 DAISEYMAE 2C ET
GRANDVIEW CMR MS MATERIAL 9328

BW 4.2 WW 47 YW 80 MILK 27 CHB 95

WMC
Cattle Co.

WASOLA, MO

TRAVIS, JETT &
WATSON MCCONNAUGHY
417-989-0486
WMCCATTLECO.COM

JDRellis Family HEREFORDS



— Three Generations Raising —
No Excuse Herefords



— Join us October 12, 2024 • 1:00PM —

PARTNERS IN PERFORMANCE

PRODUCTION SALE

SALE LOCATION: 19264 LAWRENCE 2170 • AURORA, MO 65605 **LiveAuctions.TV**



FOLLOW or CONNECT
with us for updated info

Jim & Carla
417-466-8679

Jamie & Kevin
573-289-1061

Jonathan
417-440-1300