



MHN

Missouri Hereford News
Official Publication of the Missouri Hereford Association

MARCH
2023

Missouri Hereford News
30487 Hwy J
Wentworth, Missouri 64873

Printed
Standard
US Package
PAID
StateGroup

LEADING THE WAY INTO 2023



RHF 87G PEARL 1100

REG: 44297404 • DOB: 09-12-2021

Sire: *NJW 133A 6589 MANIFEST 87G ET*

Dam: *RHF 27A RUBY 9202G*

#	CE (%)	BW (lb)	WW (lb)	YW (lb)	DMI (lbs)	SC (cm)	SCF (%)	MM (lb)	MG (lb)	MCE (%)	MCW (lb)	UDDR (%)	TEAT (%)	CW (lb)	FAT (in)	REA (sq.in)	MARB (deg.)	BMI (\$)	BII (\$)	CHB (\$)
EPD	8.3	1.3	63	98	-0.4	1.7	19.4	30	61	3.7	110	1.40	1.40	71	0.069	0.36	0.17	395	482	115
ACC	.32	.35	.27	.27	.10	.21	.17	.17	-	.21	.20	.23	.23	.03	.03	.03	.03	-	-	-

ROTH HEREFORD FARM

Eddie and Mary Roth & family

11752 NE Hwy J • Windsor, MO 65360 Cell 660-351-4126

Cattle for sale private treaty! Contact us for details!

WMC EF 18051 9G

DEVOTION 5K

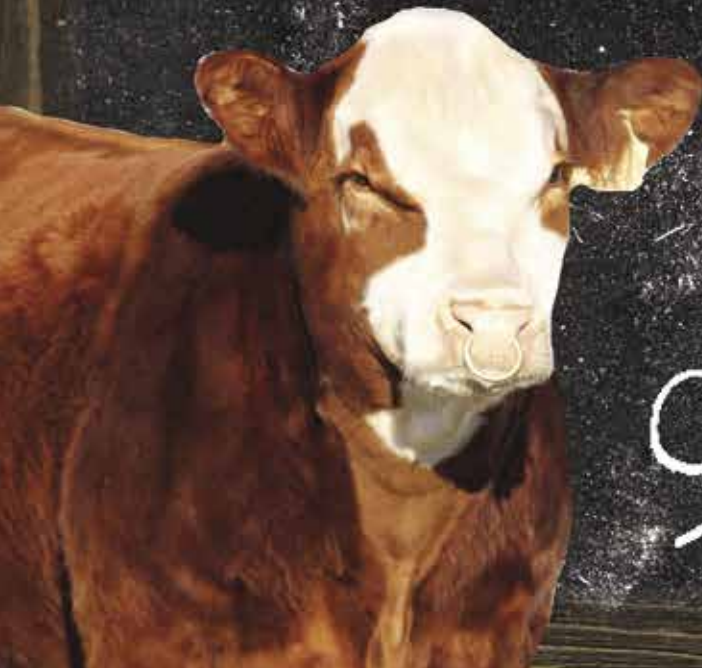


10 Traits
in the
Top 10%
of the breed!

Reg: 44372795 Sire: JW B716 Devout 18051 Dam: WMC 128D Resolute 9G DOB: 1-16-2022

CED	BW	WW	YW	MM	Udder	Teat	CW	REA	Marb	CHB
10.9	1.2	67	103	28	1.40	1.30	86	0.58	0.51	163

HOMOZYGOUS POLLED



WMC
Cattle Co.
Est. 1926

Travis, Jett and
Watson McConaughy
Wasola, Missouri

417.989.0486 t-mc2009@live.com 
Visit us online at www.wmccattleco.com

Owned with:

 Durbin
Creek
Ranch

HEREFORDS
Everhart

HELLO FROM THE EDITORS

As 2023 is in full swing, the weather has certainly shown that Missouri can be challenged by all seasons. Let us hope that we see more “like a lamb” and less “like a lion” as we head into months usually reserved for spring!

With a new year comes a new outlook and set of goals. We hope your operation is utilizing this fresh calendar to find fresh ways to tackle hard tasks, improve performance numbers, create easier workforce needs and so on. It is never too late to incorporate change for the betterment of your input costs and improved bottom line.

Certainly, genetic selections can help with the above. Investments into superior cattle can help not only from a production cost standpoint but also when it comes to marketing what has been produced. It is never challenging to market something everyone wants. What do your customers want? How can you work towards producing more of what they desire?

Eddie Watson was one of the 2022 Missouri Hereford Association Hall of Fame inductees. Be sure to read about how he has maximized his efforts in marketing bulls since 1969. His humble nature made for a fascinating story you won't want to miss.

Our membership has been busy in an industry that is seeing some of the best futures ever remembered. We are off to a great year with beef in demand, cattle numbers the lowest we've seen in our lifetime and the Hereford breed demanded for the white face factor it adds to their progeny.

Cassie Dorran, editor



Jocelyn Washam, editor



This newsletter is edited by
Rural Route Creations
 30487 Hwy J • Wentworth, MO 64873
www.ruralroutecreations.com



Advertisement & News Submissions:

Cassie Dorran 403-507-5953 cassie@ruralroutecreations.com
 Jocelyn Washam 417-838-5546 jocelyn@ruralroutecreations.com
 A special thank you to Andrea Butler for her office support throughout the year!



2023 PUBLICATION DATES

Issue	Ad Space & Material Deadline	Camera Ready Ad Deadline
March 1	January 16	January 20
July 15	May 29	June 2
September 1	July 31	August 4
November 1	September 18	September 22

ADVERTISING RATES:

Advertising rates include design at no extra cost! Two design proofs will be provided by email with each advertisement purchase. If additional changes or inclusions need to be made after the second proof, the advertiser will be billed at \$50 per hour. **Payment can be made on your invoice.**

All contracted ads are for the current calendar year.

Color Ad Type	Cost Per Issue	Four Issue Contract Price
Double Page Spread	\$500	\$1800
Full Page Spread	\$300	\$1100
Half Page Spread	\$200	\$700
Quarter Page Ad	\$150	\$500
Business Card Ad	(contract only)	\$200

All ads must be received by deadline!

View the Media Guide Online at moherfords.org for ad sizes, file requirements and material submission.



IN THIS Issue

- 4 | Hello from the Editors
- 4 | Publication Dates and Advertising Rates
- 5 | Missouri Hereford Association Officers
- 8 | State Association Update
- 10 | Cattlemen's Congress Show Results
- 12 | Hereford Women of Missouri Update
- 12 | The Ranch Kitchen Recipe
- 14 | Junior Association Update
- 15 | Junior Association Word from the Advisors
- 18 | Queen Introduction - Taylor McGlothlin
- 18 | Junior National Hereford Expo Dates
- 28 | Missouri Cattlemens Scholarships
- 30 | American Royal Show Results
- 31 | Sale Results
- 32 | Show-Me-Select Replacement Heifer Awards
- 32 | Around the Barn Baby Announcement
- 32 | 2023 Missouri State Fair Theme Announced
- 37 | Advertising Index
- 38 | Association and Industry Events Calendar

16-17 STATE AWARDS
Missouri awards presented at annual banquet

22-24 MEMBER SPOTLIGHT
Eddie Watson's character-driven transactions

26 A FRESH LOOK
Keeping a website maintained for optimal results



Photo by: © Rural Route Creations



MISSOURI HEREFORD ASSOCIATION

OFFICERS AND DIRECTORS MOHEREFORDS.ORG

President	Glen Waters	Norborne	District 1
Vice President	Jon Black	Keytesville	District 2
Secretary/ Treasurer	Matt Reynolds	Huntsville	
Directors	Mary Beth Ray	Paris	District 3
	Eddie Roth	Windsor	District 4
	Eric Adkins	Columbia	District 5
	Mike Jordan	Warrenton	District 6
	Mike McCorkill	Greenfield	District 7
	Rusty Miller	Lebanon	District 8
	Darrell Aufdenberg	Jackson	District 9

To download a Missouri Hereford Association membership application and to view most current events, applications and announcements, visit the Missouri Hereford Association website at www.moherfords.org

Missouri Hereford Association
Matt Reynolds,
Secretary/Treasurer
1071 C.R. 1231
Huntsville, Missouri 65249
660-676-3788



Cover photo by:
© Rural Route Creations

FTF **FRONTIER** 006H

Reg: P44123207 DOB: 01-06-2020 HOMOZYGOUS POLLED
TH FRONTIER 174E X MSU TCF REVOLUTION 4R



SEMEN AVAILABLE!
\$25/straw
\$50/certificate

Bink

#	CE (%)	BW (lb)	WW (lb)	YW (lb)	DMI (lbs)	SC (cm)	SCF (%)	MM (lb)	MG (lb)	MCE (%)	MCW (lb)	UDDR (%)	TEAT (%)	CW (lb)	FAT (in)	REA (sq.in)	MARB (deg.)	BMI (\$)	BII (\$)	CHB (\$)
EPD	10.7	0.5	66	101	0.1	1.2	16.6	33	66	3.5	84	1.40	1.30	67	0.089	0.36	-0.04	345	419	97
ACC	.41	.50	.44	.45	.15	.41	.28	.28	-	.26	.31	.40	.41	.22	.26	.21	.23	-	-	-

STORIE FARMS

Registered Horned & Polled Herefords

4534 State Hwy ZZ • Conway, MO 65632

Skyler Storie 417.839.8401

sjstorie129@gmail.com

Mark your calendar!
121st *Semi-Annual Sale*



CENTRAL MISSOURI POLLED HEREFORD BREEDERS ASSOCIATION

APRIL 8, 2023 • NOON

Interstate Regional Stockyards • Cuba, MO

*Offering 70 lots of bulls, cow-calf pairs, bred and open heifers,
and Hereford influenced commercial females*

New members always welcome!

For more information contact:

Larry Day, Sales Manager

Central Missouri Polled Hereford Breeders Association

660-834-4678 **Home** | 660-621-0812 **Cell**

Email: *cmphba@gmail.com*

Email or call to request a catalog!

www.centralmissouripolledherefords.com 

March 2023 | 7

STATE ASSOCIATION UPDATE

State banquet and sale recap

Written by Matt Reynolds

I want to first send out a big thank you to all of you who attended the Opportunity Sale in Sedalia or watched Online. The first full weekend in December has been truly exciting for Hereford breeders for many years now! The annual meeting and awards banquet had over 130 attending once again. Great crowd, good food and many great award winners you can read about in this issue made for another great Saturday night event. I want to thank the 29 consignors that brought us more cattle than we have ever had. The cattle get better every year, and we maintained the average. Congratulations to our consignors, buyers and viewers for making the 2022 Opportunity Sale another great success!

Hopefully the spring calving season is going well for all, probably almost done for some of you and just getting started for others. There is nothing more rewarding in this business than a new calf crop! It's time to make breeding plans for next year's calves. As your spring babies have hit the ground and your fall calves are ready to wean, it is a great time to be thinking about consigning some of your best to the 2023 Opportunity Sale in December. As most of you know May 1 is the deadline to send your \$100 nomination fee to me to nominate your herd for cattle to be considered for the sale. This is the first step in being a consignor at the 2023 Opportunity Sale. Shortly after May 1, I forward the nomination list to the sale screener so he can make plans to visit your herd and make selections for entry to the sale. Once the travel is completed, he will send me the consignor list and selections you agreed to consign. If no selections are made, I will refund your \$100 to you. Somewhere around September 10, I will mail you the entry forms that need to be mailed back to me by September 25, so we can get advertising in place for the sale. This is a great opportunity for each of you to consign your very top end females and a few herd bull prospects. The cattle our consignors bring to Sedalia each year continue to get better and better. We always have a full-house crowd and a large Online crowd watching and bidding. It is a great opportunity to showcase your breeding programs! I invite every member to get involved in this sale whether you are a large or small operation. Getting involved can benefit you in many ways in the future! Building breeder relationships and expanding your customer base is important in this business.

You should have received your 2023 membership letter in the mail. Hopefully you have paid your dues. If not, you should be receiving a second notice soon! Membership applications can also be found on the website and in the directory. Our membership has been strong for years, and we invite everyone to be a part of it. April 1 is our deadline to get your membership posted on the website! Don't let that deadline slip by you. April 1 is also important if you want to qualify for any of the many awards to be given at the Annual Awards Banquet in December. You must have your dues paid by April 1 to receive any awards! If you are a junior member your parents or grandparents must be a dues paid member by April 1.

Watch the summer newsletter for details on the fall field day/tour in the North Central District 2. If you are in District 2 and want to be involved in the event, contact Jon Black as soon

as possible. Plans are beginning to be made on this event!

Take the time to look at the advertisements in this issue on upcoming spring sales here in Missouri. The cattle market is to continue to be strong again in 2023, and there are great opportunities in Missouri to find top-end Hereford genetics at the many production and Online sales here this spring. If you ever have any questions, please call or e-mail; we are here to help direct you when needed. Make plans now to go to the spring sales, hope to see you there!

A big thank you to all for your paid memberships and decisions to place an advertisement in the new 2023-2024 Membership Directory! We have been working on the 2023-2024 directory. All 2022 paid memberships will be listed. You should be receiving a copy real soon!

Another big thank you goes out to Travis McConnaughy and Rick Steinbeck for just completing two three-year-terms on the board of directors. They were great board members, and we are very proud to announce that Glen Waters and Jon Black will be serving as your President and Vice President, respectively, for 2023! Congratulations to all!



Matt Reynolds, Missouri Hereford Association - Secretary/Treasurer

MCCORKILL FAMILY FARMS

Registered Herefords



**Bulls and Females
for sale! Contact us
for details!**

Mike and Myra McCorkill 417-637-5228 417-838-2073
152 E Dade 92, Greenfield, MO 65661

Andy, Jenn, Molly & Marylee McCorkill 417-838-0583
Brant, Erin, Knox & Briggs Harvey 417-214-0313



Falling Timber Farm

14th Annual

BULL & FEMALE SALE

Saturday, March 18th, 2023

Live Auction 5:30 pm @ the farm



**SELLING:
40 BULLS &
60 FEMALES**

TOP CUT YEARLING HEREFORD BULLS with GENOMIC ENHANCED EPDs
18 MONTH OLD HEREFORD BULLS ♦ ANGUS BULLS
FIVE YEAR OLD COWS with HEIFER CALVES ♦ YEARLING HEREFORD HEIFERS
FALL BRED COWS with HEIFER CALVES ♦ BALDY HEIFERS



FTF Frontier 260K

Frontier x FTF Powerhouse 6615D ET
CE BW WW YW SCF MM UDDR TEAT
12.1 -1.8 60 91 20.5 32 1.4 1.5



FTF Daybreak 249K

Daybreak x Hometown 10Y
CE BW WW YW SCF MM UDDR TEAT
10.1 -0.2 58 93 21.6 34 1.4 1.4



FTF Confidence 209K

FTF Confidence 6113D x FTF Prime Product 513C
CE BW WW YW SCF MM UDDR TEAT
7.0 -0.3 58 95 16.1 31 1.4 1.6



FTF Relevant 215K

FTF Relevant 831F x Huth FTF Torque C002
CE BW WW YW SCF MM UDDR TEAT
4 1.4 72 114 19.1 30 1.5 1.5



FTF Colorado 1308J

Colorado x FTF Filet Mignon 060X
CE BW WW YW SCF MM UDDR TEAT
0.9 2.9 58 90 17.3 20 1.4 1.3



FTF Masterplan 1514J

Masterplan x FTF Prospector 145Y
CE BW WW YW SCF MM UDDR TEAT
-1.4 2.1 68 120 15.5 32 1.3 1.4



FTF Confidence 2223K

Confidence x FTF M326 Fabricator 838U
CE BW WW YW SCF MM UDDR TEAT
2.5 3.2 65 101 17.5 40 1.1 1.2



FTF Colorado 266K

Colorado x Huth FTF Torque C002
CE BW WW YW SCF MM UDDR TEAT
8.4 2.7 67 100 20.5 29 1.3 1.3



FTF Colorado 282K

Colorado x FTF Porterhouse 455B
CE BW WW YW SCF MM UDDR TEAT
1.6 3.0 71 117 18.5 28 1.2 1.1



call or email for a catalog or
view videos online

Falling Timber Farm

Glenn & Yvonne Ridder
John, Heidi, Madi & Ben Ridder (636) 358-4161

Marthasville, MO

www.fallingtimberfarm.com



Oklahoma City, OK

Junior Female Show

Jan. 4, 2023 Judge: Tyler Cates & Kyle Shoufler, Modoc, Ind.

National Pen Show

Jan. 5, 2023 Judges: Sam Shaw, Caldwell, Idaho; Bruce Thomas, Gold Creek, Mont.; Jeff Gooden Oak Grove, Mo.

National Female Show

Jan. 7, 2023 Judge: Jason Hoffman, Thedford, Neb.



Junior Show: Polled Champ. Junior Heifer Calf
Open Show: Polled Champ. Junior Heifer Calf
STAG PEARL 9K ET
OWNED BY: Beau Ann Graves, Chillicothe, MO



Junior Show: Horned Res. Champ. Junior Heifer Calf
Open Show: Horned Res. Champ. Junior Heifer Calf
KLL T/R 111F CANDY 10K ET
OWNED BY: Madelyn Grace Thompson, Amity, MO



Open Show: Polled Res. Champ. Cow-Calf Pair
AR SCB 4051 RACHEL 913E
OWNED BY: Haleigh Ferguson, Smithton, MO



Junior Show: Polled Champ. Sr. Yearling Female
Open Show: Polled Champ. Sr. Yearling Female
AR D41A REVA H21
OWNED BY: Haleigh Ferguson, Smithton, MO

Congratulations
Missouri Winners!

Make plans for next year!
DEC. 30, 2023 - JAN. 11, 2024



Pen Show: Pen of 3 Females - Reserve Champion Senior Heifer Calves
OWNED BY: Triple H Acres, Miller, MO



Brian Mundy
 Phone: 816.668.4521
 bmundy.whisperingwinds@gmail.com

Registered Polled Herefords

Jake Mundy
 Phone: 816.313.9488
 jmundy.whisperingwinds@gmail.com

20509 E. Courtney Atherton Road • Independence, MO 64058

A Clear Vision for the Future

“If I have seen farther, it is by standing on the shoulders of giants.” ~ Isaac Newton

Whispering Winds Farm is excited to announce our newest partnership with



We believe these two *flush mates* will have a major impact on the industry. We look forward to their continued show career as well as the calves they are going to produce.

THA 66589 Abilene 0231 ET

THA 66589 Mildred 022J ET



Reg: P44301956 DOB: 9-4-2021
 /S Mandate 66589 ET X BR Terri 2013

Reg: P44301955 DOB: 9-4-21
 /S Mandate 66589 ET X BR Terri 2013

CE	9.4	UDDR	1.30
BW	-0.7	CW	79
WW	57	MARB	0.27
YW	79	CHB	\$134

CE	1.9	UDDR	1.40
BW	2.1	CW	83
WW	61	MARB	0.02
YW	90	CHB	\$119

Contact Whispering Winds Farms For Private Treaty Sales
Call Brian at 816.668.4521

WOMEN ASSOCIATION UPDATE

New state queen crowned

Written by Tonya Bagnell

The Hereford Women of Missouri crowned our 2023 Missouri Hereford Queen at the Missouri Hereford Banquet on Saturday, December 3, 2022. Taylor McGlothlin was crowned. Lance Fort was 2023 Missouri Hereford Women scholarship recipient.

We would like to say a big “Thank You” to everyone that donated items to the Silent Auction. Also, thank you to those of you who donated items for the social hour. A big “Thank You” to Natalie Reed and Kyla Waters for providing the table decorations.

We are always looking for new members to join our organization. Some of the things we support are the following: the

Hereford Queen, a \$250 annual scholarship award, sponsorship of the showmanship junior show at the Missouri State Fair, the social sponsorship prior to the State Hereford Banquet and Meeting, and table decorations for the banquet. If you are interested in joining, please send your dues to Marijane Miller; 20500 Sioux Drive, Lebanon, Missouri 65536. Dues are \$15 per year.

Please watch our Facebook page to keep up with all our activities during the year.



Tonya Bagnell, Missouri Hereford Association - Secretary



Chili on the Red

<i>Prep Time</i>	15 minutes	Serves 8
<i>Cooking Time</i>	30 minutes	

Ingredients

- 4 pound(s) ground beef (ground turkey or 1/2 pork and beef could also be used)
- 1 teaspoon(s) salt
- 1 large onion, chopped
- 1 teaspoon(s) black pepper
- 4 - 6 cloves minced garlic
- 2 teaspoon(s) cumin
- Tomato Paste - 12 ounce
- 2 teaspoon(s) sugar - white
- Tomatoes - 14.5 ounce can with juice
- 1-2 teaspoon(s) garlic powder - season to your liking
- 3 tablespoon(s) chili powder
- 4 - 6 cup(s) water
- 1/2 - 1 teaspoon(s) ground red pepper flakes

Directions

1. Brown ground beef with chopped onion, minced garlic cloves, and drain all excess liquid.
2. Add tomato paste, chopped tomatoes from the can with juice and all spices. Stir well.
3. Add water and bring the chili up to a boil and then down to a low boil (barely boiling) and cover your pot.
4. Cook for 20 minutes to allow the flavors to come together or meld.
5. Add more water if you like your chili with more sauce.

Cooks note: Do wear an apron and cover your pot as this chili cooks as the tomato sauce will be a bit messy. I've ruined many a shirt or dress from browning ground beef without wearing an apron! My Granny was always so full of wisdom and so right to tell me to always have on an apron when I cook. Make it fun and buy a cute one while you are at it! You can add 1/4 cup masa flour or regular flour to thicken up the chili in the last cup of water if desired.

The Ranch Kitchen Original Recipe - Alise Nolan | theranchkitchen.com

President – Kyla Waters
660-631-0299
Kg4waterz@gmail.com

Treasurer – Marijane Miller
317-341-3846
millerherefords@yahoo.com

Queen Co-chairs –
Shelby Bagnell
660-630-3361
Shelby.bagnell@hughes.net

Vice President – April Miller
816-305-7490
Aprilmiller1732@gmail.com

Mail \$15 Hereford Women of Missouri dues to
20500 Sioux Drive,
Lebanon, MO 65536

Anna Roth
573-579-7424
anna.roth15@gmail.com

Secretary – Tonya Bagnell
660-631-2109
Tbagnell6452@gmail.com

2022-2023 HEREFORD WOMEN OF MISSOURI OFFICERS

Striving For **INTEGRITY**

Bull Sale Vol. 2

March 21, 2023

Selling

- Yearling bulls
- 2 year old bulls
- Select set of top end Bred heifers
- Embryo lots from top Donors

Online with Sale Day



LORENZEN FARMS Chrisman, IL

Adam Harms, herdsman 217-369-3609

Logan Rhoads, showbarn 217-264-2481

Steve Lorenzen, partner 217-822-2803



JUNIOR ASSOCIATION UPDATE

Make plans to attend All-Breeds Show

Written by Kristin Waters



Kristin Waters, Missouri Junior Hereford Association Reporter

Hello everyone!

I hope you all had a good Christmas and start to the new year. The Missouri Junior Hereford Association (MJHA) would like to thank everyone who came to the Missouri Hereford Association banquet and sale. Also, a huge thank you to everyone who purchased items in the silent and live auctions to support our Missouri juniors. Congratulations to all the year-end winners who were announced at the banquet. As a reminder for the members, the MJHA dues deadline is April 1. Please send these to Taylor Miller.

The next big event for the MJHA is the Missouri Cattlemen's Associations All-Breeds Show in June. There will be a junior meeting following the Hereford show where we will discuss details relating to the Junior National Hereford Expo in Madison, Wisconsin, this summer and much more. I hope to see everyone there and wish everyone good luck this show season!

President – Gavin Rhode, Stewartville

Vice President – Cade Shepherd, Mt. Vernon

Secretary – Tory Miller, Lebanon

Treasurer – Taylor Miller
Mail \$15 Missouri Junior Hereford Association dues to
20500 Sioux Drive, Lebanon, MO 65536

Reporter – Kristin Waters, Norborne

Fundraising Chair – Kinleigh Bolin, Walnut Grove
Fundraising Co-Chair – Mary Grace Warden, Halfway

Directors – Haleigh Ferguson, Smithton; Jorja Ebert, Holt

Advisors –

Jeff & Susan Rhode
7765 NW Hwy NN, Stewartville, MO 64490
816-261-4819 Jeff Cell or 816-261-4821 Susan Cell
Susan.rhode@yahoo.com

Brad & Shannon Mueller
2045 PCR 520, Perryville, MO 63775
573-517-2999 • Muellers29@yahoo.com

Marijane Miller and Hayley Miller
20500 Sioux Drive, Lebanon, MO 65536
317-341-3846 • millerherefords@yahoo.com

2022-2023 MISSOURI JUNIOR HEREFORD ASSOCIATION



Pen of Three Females - Reserve Champion Sr. Heifer Calves

Triple H Acres

Structure,
Performance &
Eye Appeal



The Jackson Family
Miller, Missouri
Cell: (417) 827-1049
Ellen Cell: (417) 827-0338
triplehacres@live.com

**Full Sib Embryos
Available!**

/S Mandate 66589 ET X BR Terri 2013

Contact us for details!




Day's Family Farm

Larry and Pam Day

12139 Hwy 135, Pilot Grove, MO 65276

660-834-4678 home 660-621-0812 cell

Email: ljday@iland.net

www.daysfamilyfarm.com 

Watch for our cattle at the
Central MO P.H. Breeder's Assoc. Sale
April 8, 2023 • Cuba, MO



A WORD FROM THE ADVISORS

The power of a thank you

Written by Jeff and Susan Rhode

Most of us were taught to say “please” and “thank you” from a very young age. These words show our gratitude for kind gestures that family, friends and even strangers do for us every day. A thank you can be shared in many forms including a written note sent by mail, an email, a text message or words of appreciation delivered in person. There is no right or wrong way to extend your thanks, but a handwritten note is the most traditional way to show your gratitude and typically has the biggest impact on the receiver.

Writing a thank you note can be challenging. Here's five easy steps to guide you through this process:

1. **Start with a salutation.** How formal or informal the note needs to be depends on a few factors. If you're well acquainted with your recipient, then you may be fine addressing them by their first name. For people you don't know as well, stick to “Mr. or Mrs. Last name.”
2. **Get right to the point and express your thanks.** Mention specifically what you're thankful for. “Thank you for sponsoring the showmanship trophy at the county livestock show.”
3. **Mention a specific detail or two.** Include something that you appreciated or how you're using the item you received. “My trophy is proudly displayed in our family room as a re-

minder to work hard to achieve my goals.”

4. **Look ahead.** Let them know how their kindness and support has inspired you or others. “I am already practicing for next year's showmanship contest.”

5. **Wrap it up with more gratitude and a warm sign off.** Bring the attention back to where you started. “Thanks again for supporting our youth livestock show. Your kindness is greatly appreciated.” End in a pleasant and friendly tone. Always keep in mind the type of relationship you have with the recipient. “Sincerely” is always a proper way to end.

Your note of thanks can be written on a formal thank you note or a simple piece of paper. Write as neatly and clearly as you can and always go back and read your note before sealing the envelope and dropping it in the mail. Make sure the envelope is addressed properly and don't forget the stamp.

Your involvement in many activities would not be possible without the generosity of sponsors, volunteers and others who contribute time and resources to youth programs. Be sure they know just how much their kindness is appreciated.



Jeff and Susan Rhode, Missouri Junior Hereford Association Advisors

State Banquet & Awards



2022 Hall of Fame Inductee:
Eddie Watson



2022 Hall of Fame Inductee:
Gary Mistler



2022 Hall of Fame Inductee:
Don Birk



2022 Purebred Breeder of the Year:
Steinbeck Farms



2022 Commercial Breeder of the Year: *Mark Hatfield and Kyle Lynn*



2022 MHA Friend of the Association: *Jim Reed*



2022 MJHA Outstanding Members:
Peewee - Rhett Sneed
Junior - Payton Henderson
Intermediate - Tory Miller
Senior - Isaac Rhode (not pictured)



2022 MHA Friend of the Association:
Marty Ferguson and Family

2022 Scott Adam Memorial Scholarship:
Isaac Rhode
(no photo available)

2022 Hereford Women Scholarship:
Ethan Fort
(no photo available)

2022 MHA Scholarship:
Isaac Rhode
(no photo available)

Missouri Hereford Association



**2021 Missouri Opportunity
Consignor of the Year:**
Dirk Wirth



2022 MJHA Scholarship:
Tory Miller



2022 MHA Queen
Taylor McGlothlin



**2022 MHA Show Heifer of
the Year:**
Madilyn Grace Thompson



**2022 MHA Show Bull of
the Year:**
Cory Wood
Owen Brothers Cattle Co.



**2022 MHA Show Cow-Calf
of the Year:**
Haleigh Ferguson



2015-2022 MJHA Retiring Advisors:
Eddie and Mary Roth



MHA Outgoing President:
Travis McConnaughy



**MHA Retiring
Directors:**
Rick Steinbeck
Mike McCorkill
Travis McConnaughy

Congratulations to all winners!

QUEEN INTRODUCTION

Written by Taylor McGlothlin

Hi! I'm Taylor McGlothlin, a 17-years-old junior at Richmond High School. I am very involved in FFA, FCCLA, 4-H and tennis. After high school I plan to attend college and get my bachelor's degree in agricultural business.

At seven years old I started showing cattle, and over the years I have incorporated Hereford steers into my project. Raising Hereford cattle has taught me leadership skills, responsibility and sportsmanship. It has also opened many doors and opportunities for me as well. I have met new friends and some amazing people who I will look up to forever. These people have been mentors to me since I was little. I would not be where I am today if it wasn't for my

two aunts, Amy and Angela Phillips. They have taught me so much through the years about hard work, dedication, time management and most importantly the Hereford breed. I can't thank them enough.

I am very honored and blessed to serve as this year's Missouri Hereford Queen.



Taylor McGlothlin, Richmond, Mo., crowned 2023 Missouri Hereford Queen

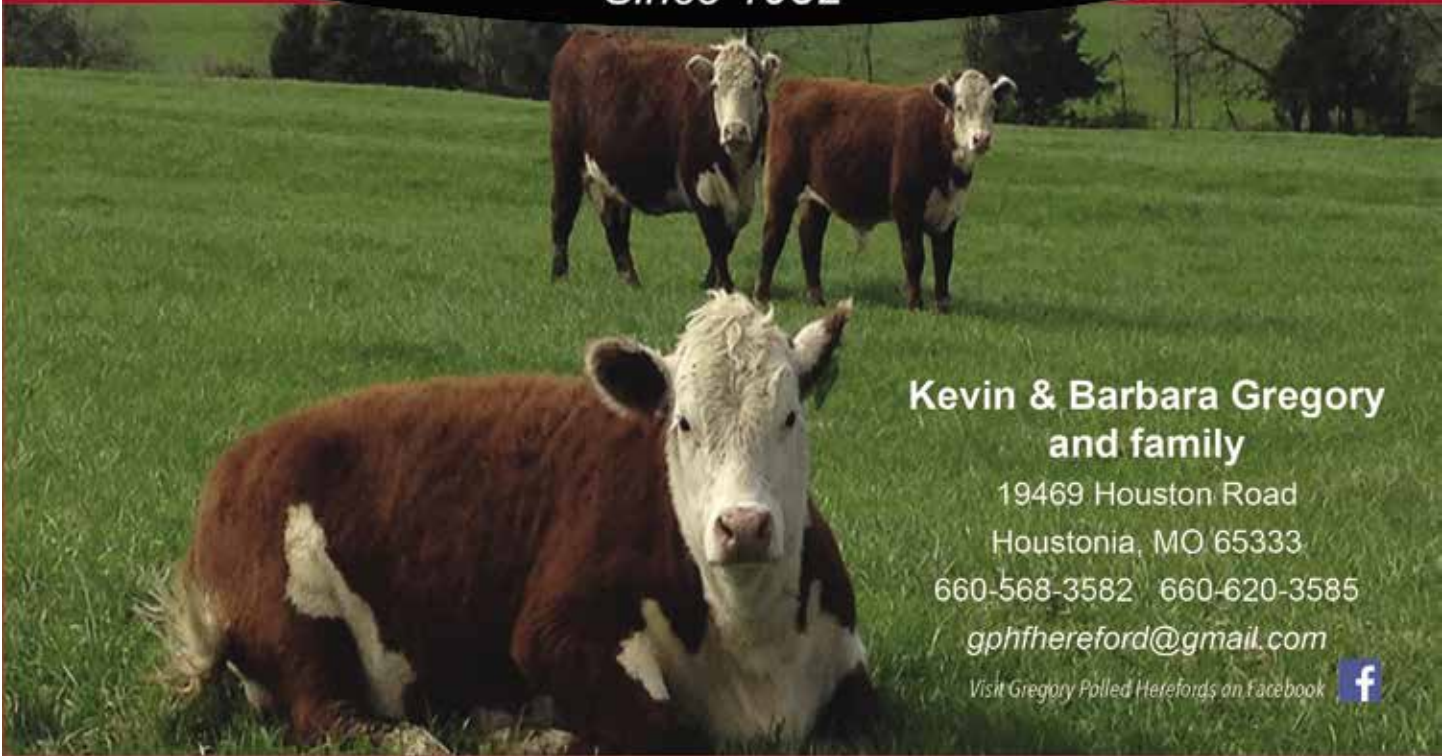
2023 JUNIOR NATIONAL HEREFORD EXPO

MAD DASH TO THE HEREFORD BASH | MADISON, WIS.
JULY 8-14, 2023



GREGORY POLLED HEREFORDS

Since 1932



Kevin & Barbara Gregory and family

19469 Houston Road

Houstonia, MO 65333

660-568-3582 660-620-3585

gphhereford@gmail.com

Visit Gregory Polled Herefords on Facebook





ADE POLLED HEREFORDS

This is the **NEW** and **EXCITING BULL** APH ADDED to our **BREEDING PROGRAM** from **CHURCHILL'S SALE** this year.

We want to thank **CHURCHILL** and **W4 RANCH** for letting APH be a part of the group that will be partners on **CHURCHILL W4 SHERMAN 2157K ET** that brought **\$160,000**.



CHURCHILL W4 SHERMAN 2157K ET {DLF,HYF,IEF,MSUDF}

P44378036 Calved: 2/7/2022 - Tattoo: LE 2157

PEDIGREE

KCF BENNETT TRUST B279 ET {CHB}{DLF,HYF,IEF}
KCF BENNETT RESOLVE G595 {CHB}{DLF,HYF,IEF,MSUDF,MDF}
 P44105347 KCF MISS TESTED C422 {DLF,HYF,IEF,MSUDF}
 EXR BANKROLL 8130 ET {DLF,HYF,IEF}
CHURCHILL LADY 079H ET {DLF,HYF,IEF,MSUDF}
 P44149885 CHURCHILL LADY 7189E ET {DLF,HYF,IEF,MSUDF}

- Sherman is built like a tank, hence his name. He has crazy good rib and body capacity yet maintains a beautiful front third. He is homozygous, has a quiet disposition, and has ideal pigment and scrotal size.
- His young dam, 079, is a beautiful cow with a very tight udder and small teats. His grandam, 7189, is the dam of SR Expedition and his great grandam, 500C, is a foundation female. His sire, Resolve, topped Knoll Crest's sale at \$41,000.
- Sherman was Churchill's #1 adj. WW bull at 878 lb. and has curve bending numbers. He's in the top 10% BW and growth, top 3% for CW, REA, MARB and both dollar indexes!

CE	WW	WW	YW	DMI	SC	SCF	MM	M&G	MCE
3.7	1.0	65	105	0.5	1.9	18.7	30	63	1.2
MCW	UDDR	TEAT	CW	FAT	REA	MARB	BMS	BIIS	CHBS
99	1.40	1.50	108	0.099	1.22	0.43	454	556	193

Owned with Churchill Cattle Co., MT, W4 Ranch, TX, Storey Hereford Ranch, MT, XA Cattle Co., NE, 3R Livestock, Australia, Topp Herefords, ND, Cane Creek Cattle Co., SD, Colyer Herefords, ID, Bill King Ranch, NM, Sticks and Stones, WY, and The Berry's, WY.

APH will NOT have our **Spring Sale** this year but will be offering Yearling and 18-month bulls for sale by Private Treaty.

Please give us a call for details.



JOHN & KAREN ADE - 443.366.2951 - 765.583-4875

8640 W 125 N., WEST LAYFAYETTE, IN

WWW.ADEPOLLEDHEREFORDS.COM

March 2023 | 19

JD Bellis Family HEREFORDS



Three Generations Raising
No Excuse Herefords

Production Sale • May 7 • Aurora Farm



19264 LAWRENCE 2170 • AURORA, MO 65605 & 16255 PECAN DR • LEBANON, MO 65536

jimbellis@missouristate.edu

Jim & Carla

417-466-8679

Aurora

Jamie & Kevin

573-289-1061

Lebanon

Jonathan

417-440-1300

Lebanon

BB 6153 **FIRST DRAFT** 128G



Reg: 4112038 • DOB: 9-15-2019 • Sire: BOYD 31Z BLUEPRINT 6153

Semen available by contacting James Henderson or Brad Shockley.

His first set of calves have been impressive!

*Watch for our 8 bulls selling in the
Arkansas Bull Sale • Heber Springs, AR • March 25, 2023*



Al Bonebrake

5943 E St. Hwy. YY Springfield, MO

Phone: 417-849-1324

James Henderson, Herdsman

417-588-4572 cell

jameswhend@gmail.com

CHARACTER-DRIVEN TRANSACTIONS

Eddie Watson named to Missouri Hereford Hall of Fame

Written by Cassie Dorran, Rural Route Creations

A true gentleman, it is no surprise that Eddie Watson has excelled in a people business his entire life. To survive in the purebred cattle industry, one could argue people skills are the fundamental basis to all success. Those who survive a long-lasting career in the purebred industry are forced to be exceptional marketers from the get-go. Eddie is no exception to this rule and has perhaps paved the way for his peers and the next two generations of Watson Polled Hereford Ranch to lead in the same manner.

It only takes two seconds into a conversation to realize what a huge heart Eddie has. In his kind mannerisms, thoughtful words and even sometimes emotional recollections, one can easily determine he is 'the kind' anyone wants to do business with. His honest approach has been the successful driving force to the ranch's success while doing business in town, with the local neighbor or with repeat customers.

From the start, Eddie purchased nine heifers from a local Texas County Hereford breeder. Warren Gobble was the International tractor dealer in Houston, Mo., and he had a group of Polled Hereford heifers for sale.

"I remember the conversation very well," Eddie recalls. "I asked him if I bought the heifers could I get the papers, and he responded 'yes'."




Eddie Watson, Cabool, Mo., established Watson Polled Hereford Ranch in 1969.


In visiting back and forth, Eddie noticed there were nine heifers, but Warren had said only eight were for sale. Eddie asked how much he'd like for them, and Warren replied "\$0.70 a pound".

Eddie was curious about the ninth heifer, so he did inquire about her. Warren responded that the ninth heifer's name was



The Hitching Post calves are here and look GREAT!





CMF 333E HITCHING POST 648H

Reg: 44203559 DOB: 10/14/20 Sire: Innisfail WHR X651/723 4013 ET

- Homozygous Polled! Dark red hide, with tons of pigment.
- Hitching Post froze high quality semen at a year of age and a sizeable number of both cows and heifers have been mated to him in the CMF cow herd.
- Hitching Post has been at the forefront at every check point. 116 WW ratio, 109 YW ratio, 110 for RE ratio and 119 for IMF ratio.

Owned with Candy Meadow Farms and Falling Timber Farms

STEINBECK FARMS

Rick and Laurie Steinbeck | Hermann, MO
573-680-0954 cell 573-237-2668 home

Watch for our consignments to the Central Missouri Polled Hereford Breeder's Association Sale April 8, 2023!

Cybil, after his wife. They were keeping that one for themselves because they thought she was an exceptional one.

In talking again, Eddie asked, “Well, if I take all nine heifers, what would you want for that last one?”

Warren said, “You wouldn’t want her; she’d be \$1.00 per pound, and I’ve not sold anything for \$1 per pound my entire life.”

Eddie confirmed that he would take all nine heifers, and Warren whirled around with an amazed look.

“A few days later after I bought the heifers, he saw my brothers in town,” said Eddie. “And he said, ‘Your little brother bought some heifers from me, and he’s not going to make it ‘a farmin’; he’s spending too much money!’”

Eddie said that was a conversation he’s never forgotten. In the end the ninth heifer wasn’t as special as she was priced, however, the group gave Watson Polled Hereford Ranch a great start.

Eddie has since farmed his whole life.

It was the character of Hereford cattle that caught Eddie’s eye from the start, perhaps no different than his own character. He appreciated the docility of the breed, recalling watching his neighbor feed 2-year-old bulls at the feed trough. Eddie remembers how good of cattle they were for big bulls, instantly catching his eye.

Today, Eddie talks over the fence to his neighbors about his own Hereford cattle. With nearly 1,000 acres conjoined in Cabool, Mo., lots of friendly conversations have been made amongst peers in the cattle industry. A lot of these neighbors have become Hereford customers over the years. Sometimes a feat for others to sell just down the road, Eddie has had no problem doing just that. One neighbor on the south side has purchased herd bulls since 1969.

Cattle are constantly trading hands at Watson Polled Hereford Ranch. Word of mouth has been the greatest marketing tool the family has utilized. Today, the grandchildren – Meagan, Makalah and Westlee – have been helpful in adding new customers to the long-standing list of potential buyers for the ranch. Everything is always for sale with groups of heifers, bulls and cows all selling. Buyers from across the region have come to the farm to look through the cow herd.

“Some buyers take 15 bulls at a time,” said Eddie. “We sell a lot of cattle into Arkansas and Texas along with our home state here in Missouri. Last fall we sold a group of 37 heifers.”

Recently, a couple who have granddaughters that play basketball with Makalah came to the ranch. New to the breed, they picked out two registered heifers to start their own herd of Hereford cattle.

With cattle selling private treaty off the farm, Eddie understands the importance of record keeping and the business aspect of having the farm. While his son Shaun helps every morning with chores, Eddie’s daughter-in-law Kim enjoys helping with the registration papers and invoicing customers, something Janet, Eddie’s late wife, did for 31 years.

“Every Tuesday night Kim comes over, and we transfer what I’ve sold for the week,” said Eddie.

Eddie’s bond with his family is no different than the strong relationships he has with neighbors and customers. His children and grandchildren are dearly talked about and always show up when help is needed. Sunday suppers are a family tradition, and Eddie attends as many grandchildren’s events.



Bulls are sold off the farm private treaty.



Shaun and Westlee enjoy daily farm chores together at the ranch.

Shaun is at the farm for two to three hours every day before he attends to his off-farm job. He's the manpower that keeps things rolling while his dad is the top marketing hand. They, by all accounts, make a team. Westlee can often be found at the farm if he's not in school. At 16 years old, he has his own cattle too, but he enjoys time with his grandfather the most.

"Westlee has helped me since he was 10," said Eddie. "He loves baling hay, and he wouldn't play high school football because he didn't want to miss the Hereford activities with his dad and grandpa."

Eddie's laughs at this, proudly recognizing how special it is to have Westlee often nearby on the ranch. It's been that way since he was a baby, as Shaun remembers packing bottles and diapers in his bib overall pockets when the three of them would head out to bale hay or tackle the daily chores.

For Shaun, he points out that each of them shares the same passion but all have different strengths to make a diverse team. Shaun has always had an off-farm job and feels fortunate his employers have understood the demands of the farm, so he can put in the long days that are sometimes necessary.

Since 1982 the ranch has drawn blood on everything in the herd. The whole family including Janet's daughter Holly and husband Charlie Rogers from Springfield, Mo., along with their two children also come to join Shaun and Kim's family for this big day. The certified herd test is every October, and everyone is sure to have it on their calendar. It's an exciting time of year with worming, pregnancy checking and weaning all happening in that one day. Many hands make work light.

It's an all-day affair, but Eddie enjoys when they line up the tables and have meals together. Holly prepares pulled pork and chili, just as Janet did for three decades.

The cow herd today consists of 100 mother cows, all registered. The very first set of bulls to sell were progeny from the original nine heifers purchased. Over the years, numbers have increased as land was acquired, originally starting with only 80 acres.

This last fall marked 34 years of showcasing cattle at the Springfield Fall Farmfest. Meagan met her husband Justin Hurst at one of these events. Also from a Hereford family, the two were recently married. Farmfest is the only trip the ranch makes in a year, and they often sell cattle on location. Every year the Watsons take nine bulls broke to lead.

"People have learned about us by their neighbors," said Eddie. "That's how we've advertised for years, and the very best bull we have each year sells right here off the farm."

Westlee is always Eddie's right-hand man when they are showing private treaty sales. He helps sort the cattle where the prospective customer can view them nicely. Westlee is always opened-eared listening to his grandfather talk about their cattle.

"I've told Westlee, someday you are going to be running this place," said Eddie.

Westlee has taken that to heart. He recognizes the communication and preparation skills he's learned from his grandfather in making a cattle sale, saying he must make the "bulls look precise to meet Grandpa's standards."

Eddie understands the importance of identifying when a calving ease bull is needed, even when their customers might not point it out. He brings paperwork to their pasture tours and provides all the data right in the pasture, so customers can

make an educated decision for their purchases.

"When you deal with people, everybody is different," said Eddie. "It's valuable to listen to what they ask. When a customer gets here, I inquire about how many cows they will use the bull on and if they are turning the bull to just cows or heifers also."

For the Watsons, all they have ever known is Hereford cattle. Their docility and easy handling temperament make time with the cattle enjoyable. Eddie's lifelong passion for Herefords has rubbed off on the next two generations.

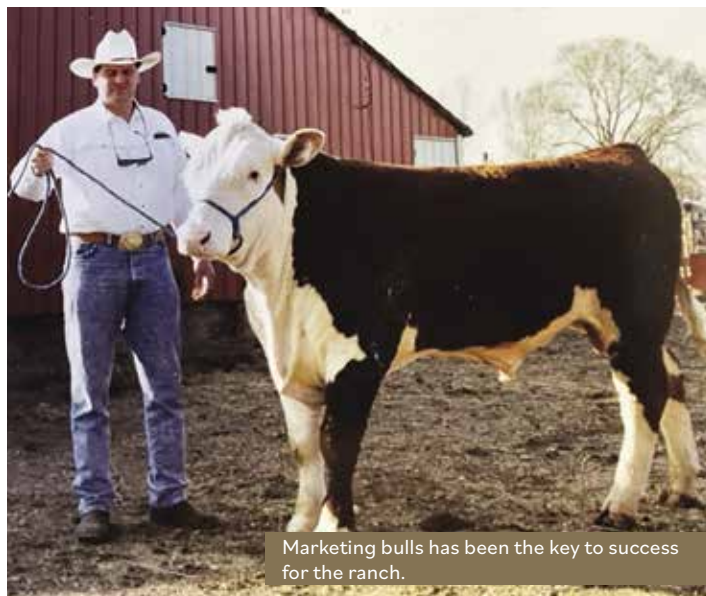
"Dad works very hard to keep everything neat, in good repair and cleaned up," said Shaun. "He is constantly reading and keeping up with the ever-changing cattle industry."

At the 2022 Missouri Hereford Association annual meeting and banquet, Eddie Watson was inducted into the association's hall of fame. Along with him, another recipient was Garry Mistler, Hatchee Creek Farm. The two met more than 20 years ago when Eddie purchased Garry's bull out of a sale. While they live two hours apart, they have stayed in touch and often traded cattle. Eddie trusted Garry and would buy cattle over the phone without seeing them.

It's these relationships that Eddie cherishes most about the cattle industry.



Eddie and Janet were married for 31 years and complimented each other's farm duties.



Marketing bulls has been the key to success for the ranch.



BUILD YOUR NEXT GENERATION

Make Matings with Intent

KINGDOM



DM ALL AROUND 904G ET x EFBEEF BR VALIDATED B413



Scan for the most up-to-date EPDs on Kingdom!

29HP0956 | AHA 44267937

Defining a New Genetic Realm

- » You will not find a more true herd bull look in unison with this kind of data package.
- » His dam is the rock star donor 7098 who is creating an absolute buzz in the breed with everything she produces.
- » A maternal sister was the Lot 1 female in the recent Churchill Sale.
- » +471 BMI and +171 CHB with 12 traits in the top 10% of the breed.



Maternal Sister - Churchill Lady 219K ET



Dam - BR Validated B413 6035 7098

GENERATOR



LOEWEN GENESIS G16 ET x C MILES MCKEE 2103 ET



Scan for the most up-to-date EPDs on Generator!

29HP0958 | AHA 44196588

Generate Big Time Look and Performance

- » Standout and high selling Hereford bull of the 2022 Express Ranches bull sale. His first release of semen averaged over \$400/straw in the fall of 2022.
- » Unbelievably powerful with unparalleled mass and thickness. Short marked, red to the ground and goggle eyed.
- » +471 BMI and +158 CHB Ranking in the top 10% of the breed on 8 economic traits.



Sire - Loewen Genesis G16 ET



Dam - C Ballees McKee 4295 ET

For full data set, progeny photos, and more visit
Bull Search at ABScbullsearch.ABSglobal.com
or contact your local ABS Representative.

BRIAN BRACE

ABS Global District Business Manager
563.260.4971
Brian.Brace@genusplc.com

A FRESH LOOK FOR 2023

New year calls for a fresh looking website

Written by Bobby Marchy, Rural Route Creations

At Rural Route Creations (RRC), our team hopes your holiday season was spent surrounded by friends and family, enjoying all the special traditions! During the holiday months, there is an increase in Online holiday shopping, no doubt a chance in more recent years to a greater percentage of gifts being purchased Online. However, as we ramp up spring sale season, the same is true for traffic on purebred livestock websites. Cattlemen who are calving or inside in the warmth are surely increasing the amount of time they spend surfing the web. Is your website looking the part for their viewing?

Here are the 3 Tips to Maximum your website exposure this sale season:

1. Website / Social Media Relationship

Website meet social media; social media meet website. This is highly important to link and share the platforms as part of your exposure plan. From posting the website on your Facebook and linking the Facebook account to the website, will increase the easy of your audience's ability to find you and your farm or ranch. Spend the time making it easy for the audience, so they won't have trouble finding you!

2. Perfect Timing

When customers are searching for something Online or on your social media pages, they are in search of the most relevant and updated information. This means before a sale or event you are hosting, give the audience enough time before the event to browse your Online presence and get a feel for what you are offering. In summary, don't update your website the week before your sale and expect customers to find it. The more knowledge gained before the event, the greater opportunity to have the audience help spread the word to others, also.

3. Updated Website

During revisions and new additions to your website, keep the RRC team in the loop about new logos, new events, or even new ideas to be added to your website. Feel free to loop our staff in on conversations for catalog submissions or with sales management to ensure these updates are made on your site simultaneously. Updating your website shouldn't be an afterthought.

Overall, to achieve the most exposure this new year when your customers are more likely to be browsing for new information, make sure your website and social media are linked, provide the audience enough time to browse information before an event, and present an updated website.

Keeping up with your Online presence is essential and a key part of understanding who your audience is. Email us to request a Google Analytics report to find out how long customers are spending time on your page, how many new or frequent users browse your website, and even where the customers are located. We love helping brainstorm with customers on ways to increase website exposure.



WEBSITE UPDATE CHECKLIST:

- Dates and times of upcoming events (Bull sales, Auctions, and Meetings)
- Current contact information (email, phone number, etc...)
- About Us (Dates, family updates and new achievements)
- New pictures and videos
- Social Media accounts
- Awards and results from previous years' sales and events
- Past event highlights



**GREGORY
HEREFORD
RANCH**

**Michael, Amy Hanna,
Emily & Sutton Gregory**
10851 Range Line Rd.
Houstonia, MO 65333
660-287-1616

Robert & Sharon Gregory
12389 Chamberlin Rd.
Houstonia, MO 65333
660-620-4020

The Cowman's Kind XXVII

MARCH 25, 2023 BULL & FEMALE SALE

• VISUAL QUALITY • NUMERICAL EXCELLENCE • MATERNAL HERITAGE



CMF 97B JAZZ 712J

P44313566 / Homozygous Polled
Sire: CMF 1720 GOLD RUSH 569G ET
Dam: CMF 829S ANN 97B

CED	BW	WW	YW	DMI	SC	SCF	MILK	M&G	CEM	MCW
+9.5	+0.3	+59	+100	+0.4	+1.3	+25.1	+22	+5	+4.1	+109
UDDER	TEAT	CW	FAT	REA	MARB	BMI	BII	CHB		
+1.40	+1.50	+77	+0.088	+0.66	+0.62	+\$516	+\$630	+\$171		



CMF 369E JEDI 720J

P44313574 / Homozygous Polled
Sire: CMF 1720 GOLD RUSH 569G ET
Dam: CMF 3005 RACHEL 369E ET

CED	BW	WW	YW	DMI	SC	SCF	MILK	M&G	CEM	MCW
+6.7	+3.7	+72	+104	+0.7	+0.8	+19.6	+35	+7	+4.5	+112
UDDER	TEAT	CW	FAT	REA	MARB	BMI	BII	CHB		
+1.10	+1.20	+93	+0.038	+0.92	+0.18	+\$432	+\$525	+\$144		



CMF 242D JULIAN 703J

P44313558 / Homozygous Polled
Sire: CMF 1720 GOLD RUSH 569G ET
Dam: CMF 59A ANN 242D

CED	BW	WW	YW	DMI	SC	SCF	MILK	M&G	CEM	MCW
+5.8	+1.3	+71	+113	+0.5	+1.4	+20.1	+33	+69	+1.7	+72
UDDER	TEAT	CW	FAT	REA	MARB	BMI	BII	CHB		
+1.30	+1.40	+85	+0.118	+0.48	+0.51	+\$437	+\$556	+\$165		



CMF 259D JERICHO 688J

P44313477 / Homozygous Polled
Sire: SHF DAYBREAK Y02 D287 ET
Dam: CMF 100W DOMINETTE 259D

CED	BW	WW	YW	DMI	SC	SCF	MILK	M&G	CEM	MCW
+2.2	+3.8	+72	+113	+0.5	+1.5	+18.7	+25	+6	+0.1	+112
UDDER	TEAT	CW	FAT	REA	MARB	BMI	BII	CHB		
+1.30	+1.20	+88	+0.038	+0.60	+0.21	+\$413	+\$509	+\$146		



CMF 328E JIGZ 689J

P44313483 / Homozygous Polled
Sire: SPEARHEAD 22S CORPS COMMANDE14
Dam: CMF 143B DOMINETTE 328E

CED	BW	WW	YW	DMI	SC	SCF	MILK	M&G	CEM	MCW
+3.8	+3.0	+65	+108	+0.3	+1.0	+16.2	+23	+55	+2.8	+124
UDDER	TEAT	CW	FAT	REA	MARB	BMI	BII	CHB		
+1.30	+1.40	+82	+0.038	+0.63	+0.28	+\$381	+\$473	+\$152		



CMF 566G JERONIMO 740J

P44313672 / Homozygous Polled
Sire: CMF 1720 GOLD RUSH 569G ET
Dam: CMF 344E SARA 566G

CED	BW	WW	YW	DMI	SC	SCF	MILK	M&G	CEM	MCW
+2.6	+3.7	+74	+124	+0.7	+1.5	+17.3	+34	+70	+1.5	+96
UDDER	TEAT	CW	FAT	REA	MARB	BMI	BII	CHB		
+1.20	+1.30	+108	+0.048	+0.94	+0.55	+\$436	+\$553	+\$208		



CMF E914 JAGUAR 748J ET

P44370945 / Homozygous Polled
Sire: SHF DAYBREAK Y02 D287 ET
Dam: POLLARD DOMINETTE E914 ET

CED	BW	WW	YW	DMI	SC	SCF	MILK	M&G	CEM	MCW
+6.8	+2.1	+67	+109	+0.4	+1.4	+18.0	+21	+54	+2.8	+102
UDDER	TEAT	CW	FAT	REA	MARB	BMI	BII	CHB		
+1.50	+1.60	+89	+0.048	+0.75	+0.52	+\$424	+\$534	+\$182		



CMF 297D JINGLE 731J

P44313656 / Polled
Sire: SPEARHEAD 22S CORPS COMMANDE14
Dam: CMF 124B DOMINETTE 297D

CED	BW	WW	YW	DMI	SC	SCF	MILK	M&G	CEM	MCW
+3.0	+2.8	+69	+114	+0.8	+1.3	+14.9	+25	+59	+4.1	+123
UDDER	TEAT	CW	FAT	REA	MARB	BMI	BII	CHB		
+1.30	+1.30	+87	+0.018	+0.82	+0.19	+\$354	+\$442	+\$141		



CMF F006 JACQUES 722J

P44313576 / Polled
Sire: CMF 282D FARM HAND 421F
Dam: HUTH C070 COLLEEN F006

CED	BW	WW	YW	DMI	SC	SCF	MILK	M&G	CEM	MCW
+0.5	+1.5	+61	+99	+0.7	+1.1	+16.5	+29	+60	-0.1	+107
UDDER	TEAT	CW	FAT	REA	MARB	BMI	BII	CHB		
+1.40	+1.40	+87	+0.038	+0.59	+0.15	+\$368	+\$448	+\$132		



Rob Helms (731) 571-8213

Steve or Hayden Helms (731) 968-2012

Email: robhelms@netease.net

565 CANDY MEADOW FARM ROAD • LEXINGTON, TENNESSEE 38351

Auctioneer: Eddie Burks TFL # 4123, TAL # 4990

To request a sale book, contact:



Mark Sims

(580) 595-0901

www.simsplusllc.com

CATTELEMEN SCHOLARSHIPS

Missouri Cattlemen Foundation awards 29 scholarships

Missouri's Cattlemen Foundation awarded scholarships to 29 high school seniors and college students at the 55th Annual Missouri Cattle Industry Convention & Trade Show. The awards were presented during a banquet celebrating the achievements of youth in the cattle industry on Saturday, January 7, 2023.

Scholarship recipients were chosen based on excellent communication, leadership and scholastic achievement as well as involvement in their communities and the agricultural industry. Each selected student received a \$1,000 scholarship funded by Missouri's Cattlemen Foundation and its many supporters. Several were endowed scholarships that were established to honor individuals who have made significant contributions to Missouri's beef cattle industry.

Scholarship were awarded to Macy Reed, Pettis; and Josie Toombs, Polk. Congratulations to these Missouri Hereford juniors on their awards.

For the third year, judges selected the top written applications and those individuals had in-person interviews with a panel of judges to compete for an additional \$2,000 making

the scholarship a total of \$3,000. The top six candidates were: Martin Dieckman, Carly Henderson, Elsie Kigar, Macy Reed, Shaye Siegel and Ahna Sinclair. The top two who received an additional \$2,000 and \$1000 respectively provided by Missouri Cattlemen's Foundation and the Boone County Cattlemen's Association were Carly Henderson and Ahna Sinclair.

Since 1997, Missouri's Cattlemen Foundation has awarded over \$760,500 in scholarships.



Scholarship recipients were chosen for the Missouri Cattlemen Foundation at the 55th Annual Missouri Cattle Industry Convention & Trade Show.

BULL SALE

SATURDAY, MARCH 18TH 2023

📍 22715 POOR BOY RD, WARSAW, MO 65355 @ NOON

FEEDER CALF BUY BACK PROGRAM OFFERED ✓

50 Commercial
Fall Bred Heifers

120 Registered
Angus & Hereford Bulls

OWNER TONY WARD | 816.365.5930 | TONY@VALLEYOAKSANGUS.COM
GENERAL MANAGER JEFF GOODEN | 573.280.2351 | JEFF@VALLEYOAKSANGUS.COM
SALE MANAGER POWERED BY THE JUDGE SOURCE LLC | JOEL & KOURTNEY JUDGE
1 805.234.7191 | 480.322.1583 | THEJUDGESOURCE@GMAIL.COM

VO HIGHLAND 2046 ET

Sire: S16 7628 HIGHLAND 84E
MGS: H MONTGOMERY 7437 ET

CED: 6.7 BW: 1.9 WW: 56 YW: 92
MARB: .12 REA: .65 Teat: 1.40 SCHB +127

VALLEY OAKS CW BENCHMARK 128

Sire: EXR BENCHMARK 8240 ET
MGS: C ETF WILDCAT 4248 ET

CED: 7.0 BW: 2.5 WW: 49 YW: 83
MARB: .48 REA: .65 Teat: 1.50 SCHB +153

27th Annual

SWEIGER FARMS BULL SALE

March 23, 2023 • 6:00 PM

Sale Barn Location: 5900 NE State Route D, Weatherby, MO 64497

75 head of Herefords and Angus sell!

Open House:
Saturday, March 18
Bulls available for viewing

Carcass Data
Available!



300L • Reg: P44390343

Sire: **SHF ENCORE Z311 217E**

CE 5.8 BW 2.2 WW 71 YW 114 CW 91 REA 0.74 MARB 0.22

Not the tallest bull in the pen but this one sticks out - he is one of the thickest and widest we have seen. Is dark red and has face markings, close to heifer qualified.

He has a 15.6 ribeye.



808L • Reg: P44393469

Sire: **SHF ENCORE Z311 217E**

CE -2.1 BW 6.6 WW 74 YW 123 CW 88 REA 0.57 MARB 0.14

A bull for frame and muscle. Sweiger Farms is retaining ownership of this bull - offering a 50% semen interest will be sold.



400L • Reg: AAA20444650

Sire: **Crawford Guarantee 913**

CE 5 BW 1.9 WW 74 YW 130 CW 51 REA .63 MARB .48

Out of Crawford Guarantee. Has a good disposition, he greets me at the gate, shows a lot of growth. Dam's sire has made a herd of well milking daughters.



Grafton Sweiger: 816-724-1651

Michael Sweiger: 816-449-0024

Charles Sweiger: 816-724-0492

Email: gksweiger95@gmail.com

Find Us on Facebook: [@SweigerFarms](https://www.facebook.com/SweigerFarms)

www.sweigerfarmsllc.com

Call or email to request a sale catalog!

Catalog and Videos will be available on our website!



Junior Female Show
 October 22, 2022
 Judge: Krisha Geffert, Lavalley, Wis.

Open Show
 October 23, 2022
 Judge: Kyle Perez, Nara Visa, N.M.



Junior Show: Reserve Champion Spring Yearling Female
EXR PRIMROSE 1504 ET
 OWNED BY: Beau Ann Graves, Chillicothe, MO



Open Show: Reserve Champion Spring Bull Calf
CORKS ARK THE GENERAL 2222 ET
 OWNED BY: Atley Kleinman, Wentworth, MO

More Missouri Results

Junior & Open Shows: Champion Senior Yearling Female
BACC D715 MONICA 075 ET
 OWNED BY: Atley and Aiden Kleinman, Wentworth, MO

Open Show: Reserve Champion Jr. Bull Calf
JPV LONGMONT 2303 ET
 OWNED BY: Cory Wood, Maysville, MO, and Vada Anna Vickland, Longmont, CO



PRF 657D GUNPOWDER KATE 804F
 Reg: P43993152 | 1/11/2018 | Sire: Churchill Gunpowder 657D ET
 Sells with bull calf at side sired by PRF 88X HIGH ROLLER 401B ET calved 1/2/2023.

Watch for our consignments in the...

**Central Missouri Polled Hereford
 Breeder's Association Sale
 April 8th, 2023**

Interstate Regional Stockyards, Cuba, MO

*Also selling heifer and bull prospects!
 Follow us on Facebook for
 updated sale info!*



Phillips-Renner Farms

Amy Phillips
 37144 Brady Creek Rd | Richmond, MO 64085
 Cell 816-878-7305 nothead1@aol.com
 Herdsman: Angela and Amanda Phillips

**Bulls For Sale
 Private Treaty**

www.prfherefords.com | Follow us on FB & Instagram

Missouri Hereford Association Website

The Missouri Hereford Association can be found Online at www.moherefords.org. Be sure to check out this site for up-to-date information, forms and classified listings.

To post your classified listing, email jocelyn@ruralroutecreations.com. For \$30, post in 30 words or less your listing for a month.

Member information is also listed on the membership page.



WELCOME TO THE OFFICIAL SITE OF THE MISSOURI HEREFORD ASSOCIATION

SALE RESULTS

Reynolds Herefords

Huntsville, Mo. | Oct. 16
Auctioneer: Cody Lowderman
Reported by: Joe Rickabaugh

LOTS GROSS AVERAGE

19 bulls \$42,350 \$2,229
36 females \$107,850 \$2,996
55 total \$150,200 \$2,731
15 comm. females \$24,700 \$1,647
3 steers \$4,100 \$1,367

TOP BULL LOT

\$4,200 — RH 973E Jalapeno 131R
DOB 10/11/2021, by C&L RR KJ 364C Jalapeno 973E,
sold to Joe & Edward Roth, Cario.

TOP FEMALE LOTS

\$8,100 — JDH Ms 13B Hometown 73C 104F
DOB 2/19/2018, by NJW 135U 10Y Hometown 73C
ET, sold to Martin Kautsch, Russelville; and a Feb-
ruary heifer calf, by C&L RR KJ 364C Jalapeno 973E,
sold to Joseph Lolli, Macon.

\$5,300 — RH Harper 1843
DOB 3/3/2018, by JDH Z31I Insight 30D ET, sold
to Lenth Herefords, Postville, Iowa; and a January
heifer calf, by JDH 11B 21C Spot On 103G ET, sold to
Lowderman Cattle Co., Macomb, Ill.

\$5,200 — AH Julia Vaca 812F
DOB 3/7/2018, by NJW 135U 10Y Hometown 73C
ET, sold to Circle R Cattle Co., Huntsville; and a Feb-
ruary heifer calf, by C&L RR KJ 364C Jalapeno 973E,
sold to Joseph Lolli.

\$5,200 — RH Ms Lucy 804F
DOB 1/26/2018, by TH 18U 719T Victor 31X, sold to
Lenth Herefords; and a January heifer calf, by LF 0125
Victor 7056, sold to Martin Kautsch.

Missouri Opportunity Sale

Sedalia, Mo. | Dec. 4
Auctioneer: Cody Lowderman
Reported by: Joe Rickabaugh

LOTS GROSS AVERAGE

2 bulls \$7,100 \$3,550
58 females \$152,250 \$2,625
60 total \$159,350 \$2,656
8 embryos \$2,800 \$350
15 semen units \$750 \$50

TOP FEMALE LOTS

\$5,500 — CSR 41F Tough Lady 33J
DOB 2/13/2021, by NJW 113D 1010 Tough 126F, con-
signed by Craig & Natalie Reed, Green Ridge, sold to
Bryan Cole, Roberts, Ill.
\$5,400 — HPF 529 Miss Mandate 943 ET
DOB 3/6/2019, by /S Mandate 66589 ET, consigned



Custom Semen Collection
Bull Housing
Semen Storage & Shipping
Breeding Supplies

PROTECT YOUR
INVESTMENT
PUT YOUR BULL IN THE TANK



8314 E. State Hwy C • Strafford, MO 65757
www.ShowMeGen.com
417-736-2125



Missouri Hereford weekend each year includes the banquet and awards on Saturday night and Missouri Opportunity Sale on Sunday.

by High Prairie Farms, Fair Grove; and a March heifer
calf, by LCX Perfecto 11B ET, sold to Kaelyn Keith, Cole
Camp.

\$4,200 — WMC C776 Homeward 85H
DOB 2/12/2020, by KCF Bennett Homeward C776,
consigned by WMC Cattle Co., Wasola; and a Septem-
ber heifer calf, by CMF 3005 Epic 384E ET, sold to Dave
Cantu, San Juan, Texas.

\$4,000 — BBH 702E 701E Miss Bandit 905G
DOB 3/13/2019, by BBH 402B 6964 Bandit 701E,
consigned by Bourbeuse Bend Herefords, Beaufort; and
a February heifer calf, by BBH 349A 63A Cowboy 801F,
sold to Sterling Cattle Co., Hartford, Ark.

\$4,000 — STET 322 Miss Jolene 1009 ET
DOB 6/11/2021, by CRR 109 Catapult 322, consigned
by Waters Farms, Norborne, sold to Karysn & Kade
Kleeman, Braymer.

SHOW-ME-SELECT REPLACEMENT HEIFER PROGRAM

Four SE Missouri cattle producers recognized

Four southeastern Missouri cattle producers were recognized recently for their contributions to the Show-Me-Select Replacement Heifer Program over more than a quarter of a century each.

The four were recognized prior to the most recent Show-Me-Select sale, says Erin Larimore, University of Missouri Extension animal science research specialist.

The Show-Me-Select Replacement Heifer Program is an on-farm heifer development program that partners producers, MU Extension livestock specialists and local veterinarians. Producers follow strict management guidelines for health, reproduction and genetics. The Eligible heifers are sold through sanctioned Show-Me-Select regional sales.

Glen Birk, of Jackson, and Willis Koenig, of Perryville, enrolled heifers in the development and marketing program in 1997 to be eligible for the first sale of Show-Me-Select heifers in southeastern Missouri in the fall of 1998.

“They have each been tremendous supporters, enrolling heifers in both spring and fall every year for the past 25 years,” says Larimore. Birk has sold heifers in every sale held in Fruitland. Koenig has sold in all but one sale.

Two other community members instrumental in the success and stability of the Show-Me-Select Replacement Heifer sales of southeastern Missouri are Darrell Aufdenberg, of Jackson, and Kenny Carney, formerly of Bloomfield.

Aufdenberg has served as sale manager for 25 years. Although partially retired, Aufdenberg continues his involvement by mentoring the next generation. Andrew Puchbauer is set to take on this role. Carney provided auctioneer services for the sale since 1998. While he recently relocated to another state, he continues to return for this community of producers.

“Support of this nature is what makes a program successful and sustainable,” says Larimore. “These individuals are valued members of the Southeast Show-Me-Select Replacement Heifer Program. We thank them for their unwavering support and look forward to continuing the partnership.”



Darrell Aufdenberg, Glen Birk, Willis Koenig and Kenny Carney were recognized recently for their contributions to the Show-Me-Select Heifer Replacement Program. Each was involved for 25 years of service to the program that partners producers, MU Extension livestock specialists and local veterinarians. *Photo courtesy of Erin Larimore.*

BABY ANNOUNCEMENT

Next generation welcomed to Blue Ribbon Farms

Aaron and Kylie Noble welcomed baby boy Jameson Jonathan Noble to their family December 4, 2022. His proud grandparents are Jeff and Stephanie Rawie, Blue Ribbon Farms, Walnut Grove, Mo.; and John and Sheri Noble.

Kylie was an active member of the Missouri Junior Hereford Association. Today, the family sells private treaty off the farm. Jameson will carry on the tradition of the next generation in no time at all!




Jameson was welcomed into the world by parents Aaron and Kylie Noble.



Make plans to attend the Missouri State Fair in Sedalia, Mo., Aug. 10-20, 2023. “Where Tradition Grows” will be the theme of the 121st annual event!

Make a statement *ON THE WEB!*




If you need a new website or just want to update the look of your current site, ***we would love to help!*** We've designed and built websites for more than 60 businesses, breeders and associations. Let's visit, and get you on the calendar for a website design!

**Booking websites for
May and June!**

CONTACT RURAL ROUTE CREATIONS!

Cassie Dorran | cassie@ruralroutecreations.com


Jocelyn Washam | jocelyn@ruralroutecreations.com



www.ruralroutecreations.com



District 1: Director – Glen Waters



4B LIVESTOCK
Registered Hereford Cattle

Tammy Adam
Bailey, Britney, Brooklyn & Brayde
735 SE Wexford Rd
Lathrop, MO 64465
Tammy 816-809-7049
4BLvstk@gmail.com
adamtammyd@gmail.com

District 4: Director – Eddie Roth

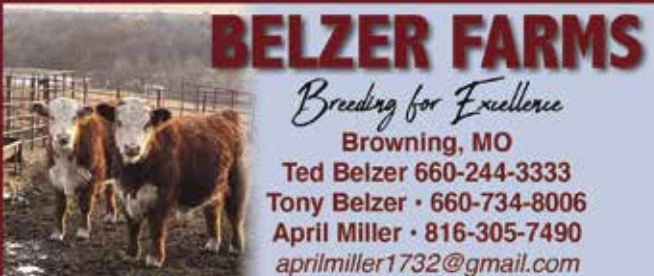


H&H Herefords
Brad, Sherry,
Justin & Meagan Hurst
Nevada, MO
417.321.2350 Brad
417.321.0423 Sherry
sherry@handshowsupplies.com

WEAVER LEATHER LIVESTOCK
Authorized Weaver
Leather Livestock Dealer
in Southwest Missouri

Visit our new website to
ORDER ONLINE NOW!
www.handshowsupplies.com

District 2: Director – Jon Black



BELZER FARMS
Breeding for Excellence
Browning, MO
Ted Belzer 660-244-3333
Tony Belzer • 660-734-8006
April Miller • 816-305-7490
aprilmiller1732@gmail.com

Hereford Bulls and Heifers + F1 Replacement Heifers for Sale



Rapp Premium Genetics
Chris and Reba Rapp & family
Rockville, Missouri
C 660.679.1019
R 417.684.2424
reppreba@gmail.com

Hereford • Angus • Sim-Angus
Custom A.I. and Synchronization Services



REYNOLDS HEREFORDS *22nd Annual Production Sale*
SUNDAY, OCTOBER 22, 2023
MATT, BARB, MAKAYLA, TYE, & LAUREN
1071 COUNTY ROAD 1231 • HUNTSVILLE, MISSOURI
MATT: 660.676.3788 • MAKAYLA: 660.676.9882
WWW.REYNOLDSHEREFORDS.COM • LIKE US ON FACEBOOK



VALLEY OAKS
Oak Grove, Missouri

Tony Ward 816-365-5930
tony@valleyoaksangus.com

Jeff Gooden 573-280-2351
jeff@valleyoaksangus.com

WWW.VALLEYOAKSANGUS.COM



Waters Farm
Glen, Kyla, Kristin & Grant Waters
23795 D Hwy
Norborne, MO 64668
660.484.3127 home phone
660.707.3646 mobile phone
gwaters@landolakes.com

Missouri Hereford Association Districts



District 3: Director – Mary Beth Ray



NATION POLLED HEREFORD
William R. Nation & Family
45933 Audrain Rd. 548
Vandalia, MO 63382
573.473.8646 cell 573.594.2960
wrnation@windstream.net

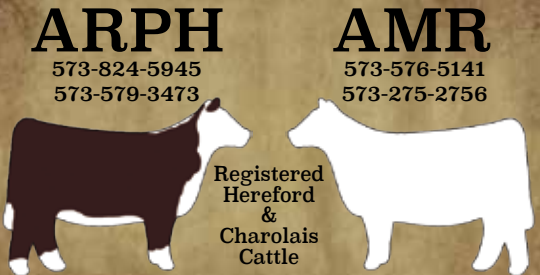
Performance Cattle for Sale

District 5: Director – Eric Adkins



DECKER HEREFORDS
 Sue Decker
 La Plata, NM • 550-330-3179
 Jared, Jaden, Jensen, & Maesyn Decker
 Centralia, MO • 573-819-0837
 Visit us online at www.deckerherefords.com

District 6: Director – Mike Jordan



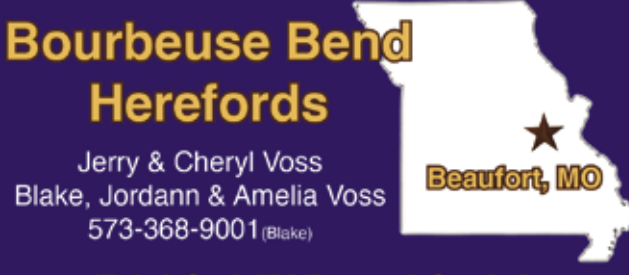
ARPH
 573-824-5945
 573-579-3473
 Dale & Lindy Roth
 Colt & Anna Gipson

AMR
 573-576-5141
 573-275-2756
 Alex, Michaela,
 Henley & AllieJo Roth

Registered Hereford & Charolais Cattle



GRAYSON CATTLE CO.
 Jarrod, Krista and Kaylee Grayson
 20372 C.R. 6380, Newburg, Mo 65550
 Jarrod cell 417-597-2524
 Email: jgrayson81@hotmail.com
www.graysoncattleco.com



Bourbeuse Bend Herefords
 Jerry & Cheryl Voss
 Blake, Jordann & Amelia Voss
 573-368-9001 (Blake)
 "Today's Cattle With Tomorrow's Genetics"

Beaufort, MO



LUDWIG FARMS
 Dale, Rhonda, Trent, Claire & Troy Linn, MO
 Phone: 573-338-6000
 Email: ludwigdale@yahoo.com

HERD SIRES
 Ludwig Catapult X-Box C21 ET
 Ludwig Trust Ranger C19

AI SIRES
 XFC Bennett Trust B279 • Endure
 Final Test • Jalapeño



KAUFLIN FARMS
 REGISTERED POLLED HEREFORDS
 VINCE & PAM KAUFLIN
 573-431-5779
 573-768-0194
kauflinfarms@gmail.com
 5232 State Route C • Bonne Terre, MO 63628



ROCKING F POLLED HEREFORDS
 Frank and Pam Flaspohler
 222 County Road 402
 Fayette, Missouri 65248
 Phone: 660-537-4809
 E-mail: fwf@rockingf.com
 PRODUCING POLLED HEREFORD SEEDSTOCK



Souders Farm
 Registered Polled Herefords
 John, Nancy, Tyler & Dakota
 Rosebud MO
 (573) 764-4718
sfherefords@gmail.com



Triple A Farm
 Eric, Pamela, Will, Ruth & Wes Adkins
 Columbia, Missouri
 573-819-8585
ericadkins05@gmail.com

Spring, a lovely reminder of how beautiful change can be.

District 7: Director – Mike McCorkill

Blue Ribbon Farms
11768 W. Farm Rd. 34 • Walnut Grove, MO 65770

Jeff & Stephanie Rawie
417-209-5538 • jeffrawie24@yahoo.com

Aaron, Kylie & Jameson Noble

McMillen's Toothacre Ranch

Trent & Mary McMillen
& Family
9128 W. Farm Road 30
Walnut Grove, MO 65770

417-788-2787 home 417-830-7257 cell

College of the Ozarks
Point Lookout, Missouri

Ben Carpenter
(573) 289-8553
bcarpenter@cofo.edu

Mark your calendar for our
upcoming production sale in
November 2025!

HARD WORK U

"A Tradition That Works"

**SHOENBERGER
POLLED HEREFORDS**
Est. 2003

ERIC, JR. AURORA, MO ERIC & KAMI

417-860-7151 417-737-0055

DUVALL
Polled Herefords

Gary and Frances Duvall
1082 Hwy 97 • Lockwood, MO 65682
417-232-4817 H 417-827-2163 C
duvallherefords@keinet.net

Herdsmen: Miguel Cifuentes 417-793-5082

District 8: Director – Rusty Miller

JM
MENZIES CATTLE

Josh & Mindy Menzies
5667 State Hwy. 38 • Marshfield, MO 65706
417.425.5659 • jmenzies79@gmail.com

Reg. Hereford and Angus Bulls and Replacement Heifers For Sale

Holmes Hereford Farm
Greg & Vicki Holmes
56 State Hwy A
PO Box 482
Wheaton, MO 64874
Phone: 417-652-7463
Cell: 417-848-9010
holmesfs@windstream.net

Horned & Polled Herefords

Visitors Are Always Welcome

NETWORTH FEEDS
NFF \$ FEEDING

• Heifer Development
• Bull Development
• Backgrounding of steers and commercial heifers
• Marketing Assistance
• Custom Blended Feeds

For more info on Cattle at the show, 814-728-6079. Or call 573-243-5022 or 573-747-5506 with any questions or email us: networthfeeds@outlook.com

M P H
McCown
Polled Herefords

RR 4 Box 1171, Ava Mo. 65608
Cell 417.230.6556
cmmccown@yahoo.com

WWW.MPHHEREFORDS.COM

From our family to yours.
Quality Herefords!

In God We Trust, all our Cattle we Monitor.

Advertise Here

Contact Jocelyn Washam at
417-838-5546 or jocelyn@ruralroutecreations.com
to place your advertisement!

District 9: Director – Darrell Aufdenberg



APH
Aufdenberg
Polled Herefords

Darrell Aufdenberg
Jackson, Missouri
(573) 270-6755 cell
aufdenbergd@yahoo.com

Quality You Can Count On

Out of State



Toby & Debby Dulworth
270-224-2993

DOGWOOD FARM
Herefords
since 1964

Pasture-Selected Made to Graze
dogwood@brtc.net

website: dogwoodherefords.com 2492 Kirkman, LaCenter, KY 42056



LPH

Lizzie's Polled Herefords
Polled & Horned Genetics

Kenny, Michelle & Lizzie Spooler • 573-270-4145
1788 Co. Rd. 347 Jackson MO, 63755 • lphspoolerfarms@aol.com



MALONE
Hereford Farm

1371 Road F ~ Emporia, KS 66801
Phone/Fax: 620-342-7538
Alton's Cell: 620-794-2358
ammalone@lcwb.coop

Alton, Marie, Brian and Dustin Malone

ADVERTISER INDEX

4B Livestock	34		
ABS Global	25		
ADE Polled Herefords	19		
ARPH/AMR	35		
Aufdenberg Polled Herefords	37		
Belzer Farms	34		
Blue Ribbon Farms	36		
Bonebrake Herefords	21	Kaufin Farms	35
Bourbeuse Bend Herefords	35	Lizzie's Polled Herefords	37
Butler Polled Herefords	39	Lorenzen Farms	13
Candy Meadow Farms	27	Ludwig Farms	35
Central Missouri Polled Hereford Breeders Assoc.	7	Malone Hereford Farm	37
College of the Ozarks	36	McCorkill Family Farms	8
Day's Family Farm	15	McMillen's Toothacre Ranch	36
Decker Herefords	35	Mead Farms	38
Dogwood Farm	37	Menzie Cattle Co.	36
Duvall Polled Herefords	36	MPH McCown Polled Herefords	36
Falling Timber Farms	9	Missouri State University LJR	40
Grayson Cattle Company	35	Nation Polled Hereford	34
Gregory Hereford Ranch	26	Networth Feeds and Feeding	36
Gregory Polled Herefords	18	Open Range Cattle Co.	39
H&H Show Supplies/Herefords	34	Phillips-Renner Farms	30
Holmes Farm Supply/Herefords	36	Rapp Premium Genetics	34
Jim D. Bellis Family Herefords	20	Reed Farms	40
		Reynolds Herefords	34
		Rocking F Polled Herefords	35
		Roth Hereford Farm	2
		Rural Route Creations	33
		Shingle Oaks Polled Herefords	37
		Shoenberger Polled Herefords	36
		Show-Me Genetic Services	31
		Souders Farm	35
		Steinbeck Farms	22
		Storie Farms	6
		Sweiger Farms	29
		Triple A Farm	35
		Triple H Acres	14
		Valley Oaks	28, 34
		Waters Farm	34
		Whispering Winds Farm	11
		WMC Cattle Company	3



SHINGLE OAKS
POLLED HEREFORDS

Eric, Cindie, Cassie & Krista Allscheid
8052 Andy Road • Waterloo, IL 62298
Eric Cell – 618-593-9642

FIND US ON FACEBOOK! 

Calendar

EVENTS & DEADLINES

MARCH

- 4** Mead Farms Performance-Tested Bull Sale
Versailles, Missouri
- 18** Falling Timber Farm 14th Annual Bull & Female Sale
Marthasville, Missouri
- 18** Valley Oaks Bull Sale
Warsaw, Missouri
- 21** Lorenzen Farms Striving for Integrity Bull Sale Vol. 2
Online with Sale Day
- 23** 27th Annual Sweiger Farms Bull Sale
Weatherby, MO
- 25** The Cowman's Kind XXVII Bull & Female Sale
Lexington, Tennessee
- 25** Arkansas Bull Sale
Heber Springs, AR

APRIL

- 1** Missouri Hereford Membership Associations
Dues Deadline
- 8** CMPHBA 121st Semi-Annual Sale
Cuba, Missouri

MAY

- 1** Missouri Opportunity Sale
Nomination Deadline
- 7** J.D. Bellis Family Production Sale
Aurora, Missouri
- 13** Mead Farms Female and Bull Sale
Versailles, Missouri

JUNE

- 8-11** Missouri Junior Cattlemen's Association All-Breeds Show
Sedalia, Missouri
- 10** Missouri Junior Hereford Association Meeting
Sedalia, Missouri - 30 min following show

JULY

- 8-14** Junior National Hereford Expo
Madison, Wisconsin

Dates to be announced soon for the 2023 Missouri Hereford Association Field Day! Watch the Facebook page for more announcements and the July Missouri Hereford News Issue.

MHA

Mo Hereford Association

District 2

Field Day

North Central Missouri

MEAD FARMS

Female and Bull Sale

Saturday, May 13, 2023

Noon • Mead Sale Headquarters • Versailles, MO

Over 400 head sell!

**Angus, Charolais,
Red Angus & Hereford**

130 Spring Pairs, 125 Fall Bred Cows,
125 Bred Heifers & 75 Breeding Age Bulls



Cattle sired by SHF HOUSTON, VALIDATED, MEAD HOMETOWN R447, BEHM 100W CUDA 504C, BOYD POWER SURGE 9024, MOHICAN THM EXCED Z426 and BG LCC 11B PERFECTO 84F



since 1942

21658 Quarry Lane
Barnett, MO 65011
Office (573) 302-7011
Fax (573) 348-8325
email: meadangus@yahoo.com

Alan Mead, Owner

(573) 216-0210

Jennifer Russell

(573) 721-5512

Call or email to request a sale book and join our mailing list!



Proven, Predictable Genetics with added Value!

www.meadfarms.com

SHOW HEIFERS



must come from productive cows
and turn into productive females too!

That is what we hang our hat on...

BPH

BUTLER POLLED HEREFORDS

Jimmie, Andrea & Joel Butler

4195 South Farm Rd. 53 Republic, MO 65738

417-838-4095 *Jimmie* 417-838-3665 *Joel*

417-838-8427 *Andrea*

butlerpolledherefords@hotmail.com

Cody, Jocelyn & Kyla Jo Washam

30487 Hwy J Wentworth, MO 64873

417-489-5450 *Cody*

417-838-5546 *Jocelyn*

jocelyn.washam@hotmail.com

Fall Born Show Heifer Prospects

available private treaty! Heifers available on a first come first serve basis! Contact us for details and to schedule a time for viewing!

Maternal Excellence Private Treaty Sale

Watch for details about our upcoming fall sale in September 2023!

Open Range Cattle Co.

Kristin Allen • Rogers, AR • 816-729-6305 cell

ksamizzou@yahoo.com

Visit us online: www.butlerpolledherefords.com

  Follow us on Facebook and Instagram

Have questions? Try these in your program!

AW Statesman 038H



Reg: **P44177977**
HOMOYGOUSS POLLED

Quite possibly the BEST son of Final Test. Elite CED and BW. All \$ values at the top of the breed. Top 5% or better in CED, BW, SCF, Udder, Teat and IMF. A high fertility sire.

SEMEN \$30 CERTIFICATES \$75

Owners:
Journagan Ranch / Missouri State 417.838.1482

Ashewood Farms Bill Ashe 731.610.4445
Wes Ashe 731.439.3038

EFBEEF TFL U208 TESTED X651
F FINAL TEST 722
F MS YORK 567

MOHICAN THM EXCEDE Z426
AW LADY EXCEDE 82F
AW LADY SENSATION 613D

#	CE (%)	BW (lb)	WW (lb)	YW (lb)	DMI (lbs)	SC (cm)	SCF (%)	MM (lb)	MG (lb)	MCE (%)	MCW (lb)	UDDR (%)	TEAT (%)	CW (lb)	FAT (in)	REA (sq.in)	MARB (deg.)	BMI (\$)	BII (\$)	CHB (\$)
EPD	14.7	-3.2	58	88	0.2	0.8	25.5	31	69	5.5	66	1.60	1.60	62	0.039	0.27	0.58	500	613	150
ACC	.43	.53	.44	.45	.15	.39	.27	.27	-	.25	.29	.40	.42	.24	.27	.24	.25	-	-	-

CSR 73D Valentino B413 40H



Reg: **P44172186**
HOMOYGOUSS POLLED

One of the stoutest sons of Validated you will find. His dam is a big power cow that never misses. Great grandmother produced 12 calves in 13 years. Great numbers. Pay attention if you need carcass and power and low birth...he is the one. BW 80 WW 744 YW 1150 SCROTAL 41 REA 16.06 / RATIO 108 MARBLING 4.7 / RATIO 119.

SEMEN \$25 CERTIFICATES \$65

EFBEEF TFL U208 TESTED X651
EFBEEF BR VALIDATED B413
EFBEEF 4R THYRA Y865

CMR THE PROGRAM A431
CSR A431 VICKIE 73D (73D)
CSR GAUCHO LASS 73A

#	CE (%)	BW (lb)	WW (lb)	YW (lb)	DMI (lbs)	SC (cm)	SCF (%)	MM (lb)	MG (lb)	MCE (%)	MCW (lb)	UDDR (%)	TEAT (%)	CW (lb)	FAT (in)	REA (sq.in)	MARB (deg.)	BMI (\$)	BII (\$)	CHB (\$)
EPD	6.4	1.5	61	92	0.3	1.4	18.1	34	65	7.3	69	1.20	1.20	80	0.069	0.93	0.72	431	547	187
ACC	.42	.54	.47	.47	.15	.38	.38	.27	-	.25	.34	.42	.43	.26	.29	.25	.27	-	-	-

LJR  **Missouri State**
UNIVERSITY
Rt. 1 Box 85G • Mountain Grove, MO 65711
Marty Lueck, Manager 417-948-2669
Cell 417-838-1482 • mvlueck@centurytel.net

REED
FARMS
Registered Polled
Herefords
Since 1962

Jim and Linda Reed
P.O. Box 126
Green Ridge, MO 65332
660-527-3507
Jim cell 417-860-3102
Natalie cell 816-820-4282
reedent@iland.net
www.reedent.com