

JULY 2021

MHN

Missouri Hereford News

Official Publication of the Missouri Hereford Association



Youth are the
fabric of this breed

Inside this issue

All Breeds Junior Show

NJHA Fed Steer Shootout Field Day

Be on the Lookout for Foot Rot

Haleigh Ferguson : Hereford Membership Spotlight

Spring Sale Results

Wentworth, Missouri! 64873

30487 Hwy J

Missouri Hereford News

Printed
Standard
US Package
PAID
StateGroup



MHF 57C 7124 08G Reg: 44016748
 CED 4.5 BW 2.0 WW 91 YW 90 SC 0.9 MILK 26 REA 0.57 IMF 0.12 CHB \$127

- Deep dark red and **SUPER** attractive!
- 08G is one of our best 2 yr olds nursing a goggle eyed Mandate heifer who also **SELLS!**



MHF INNISFAIL FREIDA 5A 35E Reg: 43932607
 CED 1.2 BW 1.6 WW 96 YW 96 SC 1.2 MILK 18 REA 0.85 IMF 0.44 CHB \$157

- **HOMOZYGOUS POLLED**
- **SUPER** sweet 4013 daughter with a near perfect udder nursing an Epic heifer who also **SELLS!**



MHF 167Y 333 42F ET Reg: 43962174
 CED 3.7 BW 2.2 WW 50 YW 89 SC 0.8 MILK 23 REA 0.88 IMF 0.88 CHB \$105

- **HOMOZYGOUS POLLED**
- Own daughter of the Carcass Queen.
- Pigment, Maternal, Udder, Carcass.....This future **DONOR** has it all!!



SEPT. 26, 2021

1 P.M. + AT THE RANCH + WASOLA, MO

Many like these sell!

JOIN US THE EVENING OF THE 25TH FOR A DINNER AND SOCIAL!

Mark your calendar!

WMC BULL & COMMERCIAL FEMALE SALE
 Oct 31, 2021 • 1pm



LiveAuctions.TV 2.0

Visit us online at www.wmccattleco.com



Travis & Sarah McConnaughy
 Herdsman: Jett and Watson McConnaughy
 Wasola, MO
 Phone: 417.989.0486
 Email: t-mc2009@live.com



LJR MSU X51 BOSCH 371B

Sire: KCF Bennett Revolution X51

CED +4.1, BW 2.1, W 57, Y 96, M II, REA .99, MARB .25, CHB 152

A low birth wt. son of X51. His sons have been our top selling bulls including the \$8000 top selling bull in our last sale. Daughters have excellent udders and are excellent cows. Trait Leader in Carcass wt, Ribeye, Marbling, CHB. A proven breeding bull.
Semen \$20/Certs \$60



C&L RR KJ 364C JALAPENO 973E

Sire: R Leader 6964 SOD: CRR 719 Catapult 109

CED 8.2, BW 1.5, W 71, Y 105, M 30, M&G 66, REA .41, MARB .15, CHB 125

Jalapeno is an exceptional son of Leader. He excels in phenotype and structure. Five maternal sisters averaged \$12,300 in 2019 Jensen female sale. Outstanding EPDs, to enhance many breeding programs. Dam is one of the elite cows in the breed.
Homozygous Polled. Heifer approved
Semen \$25/Certs \$75



NJW 113D 1010 TOUGH 126F

Sire: KT Built Tuff 1010

CED 7.5, BW 3.0, W 64, Y 101, M 28, M&G 60, REA .19, MARB .25, CHB 133

A bull that is an outcross for many programs. His Dam is a full sister to NJW 79Z, the dam of many famous herd bulls. He was the high weaning ratio bull in his 2018 calf crop at NJW.
Homozygous Polled
Semen \$20/Certs \$60



WHR BEEFMAKER 4013 191 311E

Sire: Innisfail WHR X651/723 4013

CED 2.5, BW 2.5, W 60, Y 100, M 31, M&G 61, REA .23, MARB .44, CHB 166

A deep bodied bull that is very easy keeping. Extremely fertile. His daughters are excellent cows. A bull that will add marbling to his calves.
Homozygous Polled
Semen-\$25/Certs \$75

Watch for our 30th Annual Sale
Saturday, October 2, 2021

Cattle for sale privately



Rt 1 Box 85G • Mountain Grove, MO 65711
Marty Lueck, Manager 417-948-2669
Cell 417-838-1482 • mvlueck@centurytel.net



Jim and Linda Reed
P O Box 126
Green Ridge, Mo 65332
660-527-3507
Cell 417-860-3102
reedent@iland.net
www.reedent.com

Editors

As I (Cassie) write this, my kiddos are bouncing off of me, *literally*. With a one and a three year old, it seems the days go by in the blink of an eye, and I wonder how will I get everything done on my list.

As Jocelyn and Cody Washam welcomed their first child a few weeks ago, it brings back so many raw memories for me. Children are a true blessing of God. Once you become a parent, everything changes. What you once thought as priority is centered around that little, precious human being.

You might wonder, where on earth am I going with this...for a Hereford publication! You see, my husband's family grew up with Hereford cattle in Canada – Remitall Cattle Co. of Alberta. It was his location that moved me to Canada from NW Arkansas nine years ago. Just the other day my husband mentioned to me that our two little guys will have to have something with a white face to show in a few years. My face lit up; it made me excited to think about the connections and learning opportunities they will have with their future show projects.

This breed is incredible for youth! While Herefords have many other wonderful attributes, there's one common bond for nearly every Hereford Member Spotlight we do for this publication – emphasis on youth. Whether you have young children, grandchildren or a keen neighbor down the road, the docility of the Hereford breed is unbeatable.

Be sure to read about a young woman we've spotlighted in this issue and all of the junior activities on the horizon. There's numerous ways for youth to get involved in raising finished steers, ambitiously growing their own herd or seeking more knowledge through competitions and conferences. The investment the adult membership has made towards youth are to be commended. It's certainly noticed.

As I think about raising our children in agriculture, there's no greater gift than having them right by our side as we put out mineral this summer, check heats, tidy fence lines, go check crops...the list goes on and on. Our juniors are watching us. They see how much fun we have raising cattle and enjoying camaraderie amongst each other.

What a blessing this agricultural way of life truly is!

- The Editors, *Rural Route Creations*

“As I think about raising our *children in agriculture*, there's no greater *gift* than having them *right by our side*...”



Cassie Dorran, editor



Jocelyn Washam, editor



This newsletter is edited by
Rural Route Creations
 30487 Hwy J • Wentworth, MO 64873
www.ruralroutecreations.com

2021 Publication Dates

Issue	Ad Space & Material Deadline	Camera Ready-Ad Submission
March 1	Jan 18	Jan 22
July 15	June 1	June 4
September 1	Aug 2	Aug 6
November 1	Sept 20	Sept 24

Advertisement & News Submissions:

Cassie Dorran 403-507-5953 cassie@ruralroutecreations.com
 Jocelyn Washam 417-838-5546 jocelyn@ruralroutecreations.com



Advertising Rates:

Advertising rates include design at no extra cost! Two design proofs will be provided by email with each advertisement purchase. If additional changes or inclusions need to be made after the second proof, the advertiser will be billed at \$50 per hour. Payment can be made on your invoice.

All contracted ads are for the current calendar year.

Color Ad Type	Cost Per Issue	4 issue Contract Price
Full page ad	\$300	\$1100
Double Page Spread	\$500	\$1800
Half page ad	\$200	\$700
Quarter page ad	\$100	\$350
Business card ad	(contracted only)	\$200

All ads must be received by deadline!

View the Media Guide online at moherfords.org for ad sizes, file requirements and material submission.



IN THIS
Issue

- 4 | Words from the Editors
- 4 | Publication Dates and Advertising Rates
- 5 | Missouri Hereford Association Officers
- 8 | State Association Update
- 8 | Missouri Hereford Field Day – District 9
- 12 | Women Association Update
- 12 | Missouri State Fair Schedule
- 12 | The Ranch Kitchen Recipe
- 14 | Junior Association Update
- 14 | Junior Association Note from the Advisors
- 15 | NJHA Fed Steer Shootout Field Day
- 15 | MSF Hereford Steer Exhibitors
- 26 | AHA Maternal Advantage
- 26 | Junior National Hereford Expo Dates
- 28 & 34 | Around the Barn Membership Updates
- 28 | Association & Industry Events & Deadlines
- 28 | GE-EPD Fall Sale Deadlines
- 30 | Sale Results
- 30 | Plans for NWSS and Cattlemen's Congress
- 34 | Advertising Index

16 *All-Breeds* Junior Show
Hereford Juniors Compete for their State Show

23 *Foot* Rot
Early Detection is Key to Treatment

24-26 Member *Spotlight*
Haleigh Ferguson's Determination Creates Bright Future



23



24-26

© Rural Route Creations

Missouri Hereford Association

Officers and Directors

www.moherfords.org

<i>President</i>	Travis McConaughy	Wasola	District 8
<i>Vice President</i>	Brian Littleton	Keytesville	District 2
<i>Secretary/Treasurer</i>	Matt Reynolds	Huntsville	
<i>Directors</i>	Amy Phillips	Richmond	District 1
	Mary Beth Ray	Paris	District 3
	Eddie Roth	Windsor	District 4
	Eric Adkins	Columbia	District 5
	Rick Steinbeck	Hermann	District 6
	Mike McCorkill	Greenfield	District 7
	Darrell Aufdenberg	Jackson	District 9

To download a Missouri Hereford Association membership application and to view most current events, applications and announcements, visit the Missouri Hereford Association website at www.moherfords.org

Missouri Hereford Association
Matt Reynolds,
Secretary/Treasurer
1071 C.R. 1231
Huntsville, Missouri 65249
660-676-3788

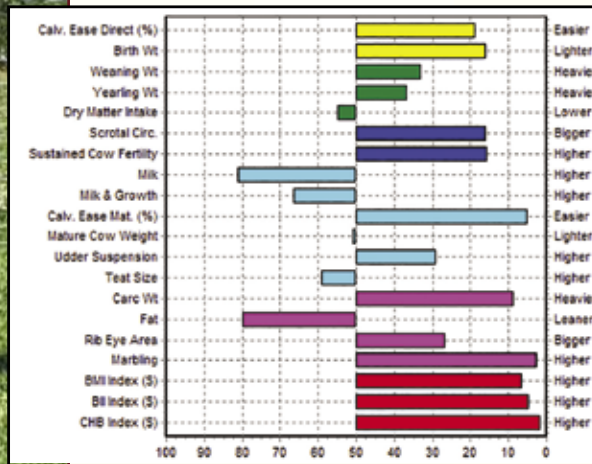


Cover photo
© Rural Route Creations

Further Bellis Examples of “No Excuse Herefords”



(P43948330)



JDB LILAC Z311 951B ROCK 192F {DLF,HYF,IEF,MSUDF}

SCHU-LAR ON TARGET 22S {SOD,DLF,HYF,IEF,MSUDF}

KCF BENNETT ENCORE Z311 ET {CHB,DLF,HYF,IEF,MSUDF}

KCF MISS REVOLUTION X338 ET {DLF,HYF,IEF}

SHF RIB EYE M326 R117 {SOD,DLF,HYF,IEF}

LILAC MARTHA R117 951B

LILAC MARTHA X46 864Z {DOD}



J.D. Bellis Family

Jim D. & Carla Bellis

19264 Lawrence 2170 • Aurora, MO 65605

Jim cell: 417-466-8679

JimBellis@missouristate.edu

Jonathan Bellis 417-440-1300

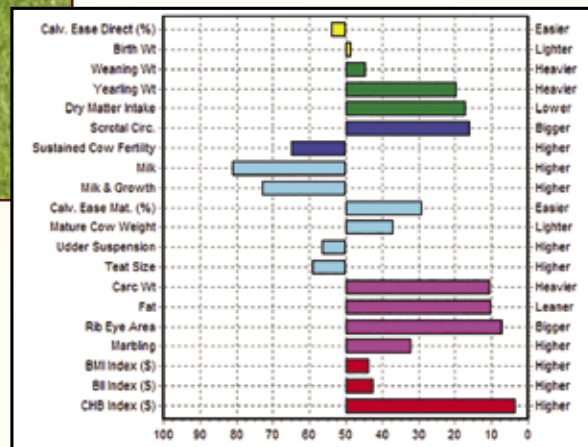
Kevin, Jamie, Harper & Ivey Johansen

Kevin cell: 573-289-1061

Neal, Joanna & Nora Wilkinson



(43775798)



JDB 100W 507P Trust C555 ET {DLF,HYF,IEF}

KCF BENNETT 3008 M326 {SOD,DLF,HYF,IEF,MDF}

NJW 73S M326 TRUST 100W ET {SOD,CHB,DLF,HYF,IEF,MSUDF}

NJW P606 72N DAYDREAM 73S {DLF,HYF,IEF,MSUDF}

REMITALL ONLINE 122L {CHB,SOD,DLF,HYF,IEF}

STAR ONLINIA DOMINETTE 507P ET

RB L1 DOMINETTE 4059 {DLF,HYF,IEF}

The logo consists of the letters 'FTF' in a white, bold, serif font, set against a dark red square background.

THANK YOU

for a great 12th Annual Bull & Female Sale!
We look forward to seeing you on March 19th, 2022.

The logo consists of the letters 'FTF' in a white, bold, serif font, set against a dark red square background.

Falling Timber Farm

Glenn & Yvonne Ridder
John, Heidi, Madi & Ben Ridder (636) 358-4161

Marthasville, MO

www.fallingtimberfarm.com

Update

What a time of change we are all living in these days. I don't believe any one person has not been affected by some change in the last 18 months. But, I want to applaud everyone in the agricultural business because we didn't have a choice but to keep business as usual. We made changes within our families, households and farms to keep on keeping on. There is no time to rest in agriculture!



Travis McConaughy
Missouri Hereford Association
President

The spring rains have been plentiful in the Midwest, making for a good hay season, once we were able to get started. With grain prices soaring through the roof, it's more important now than ever to put up the best quality feed we can at home. I encourage you to talk with a nutritionist at your local University Extension office or local feed mill to ensure your minimum nutritional requirements within your herd. This is and will get to be a more important "crunch" number to be able to make the economics work for you, in your situation, on your farm.

The MCA All Breeds Junior Show was held June 11-13. There was a huge turnout for a great weekend in Sedalia. It is great to see so many juniors interested in an event like this. Congratulations to all those who attended. The next big show will be the Junior National Hereford Expo (NJHE) located in Kansas City this year. I have been notified there are more than 1,700 entries from over 40 states! That is a huge testament for the interest in the Hereford breed and all those involved in orchestrating such a great event. The NJHE will be followed up with the Ozark Empire Fair in Springfield July 29-Aug 7 and the Missouri State Fair Aug 12-22. Look for big turnouts at these events!

Joe Rickabaugh should have made a visit this summer with most consigners for the MO Opportunity Sale. This is one of the most highly regarded consignment sales in the U.S.! It is contributed by the screening of the cattle, sale management and the consigners offering some of their absolute best. This year should be as good or better than ever. Start prepping cattle NOW; it doesn't happen overnight. It is a great social event whether you are selling, buying, attending the Annual Meeting, or just getting to know new people.

Wrapping up, I just want to say it is a great time to be in the Hereford business. Demand is strong in bulls and females. Don't be afraid to talk to your local commercial cattlemen about the advantage of a Hereford bull. It could be the reason he may not have one is because he doesn't realize the Hereford Advantage.

Thank you for your time,
Travis McConaughy, MHA President

MHA

Mo Hereford Association

District 9

Field Day

Aug. 27-28, 2021

August 27, 2021:
6:00 PM - social & meal at Aufdenberg Polled Herefords
13023 Hwy 61, Jackson, MO 63755

August 28, 2021:
8:00 AM - Leimer Farms - Breakfast & tour
10:00 AM - Aufdenberg Polled Herefords farm tour
11:30 AM - Lizzie's & Verseman's farm tour - lunch at Lizzie's
2:00 PM - Alex Roth Polled Herefords farm tour
3:30 PM - Mueller Polled Herefords farm tour - dinner following tour

Look for a complete schedule and details to be posted online at www.moherfords.org and the MHA Facebook page!

**For more information, contact:
Darrell Aufdenberg 573-270-6755**

MARK YOUR CALENDAR!

Maternal

EXCELLENCE

ONLINE HEREFORD SALE

9.13.21

Offering our very best spring heifer calves!

Join us for our fall
open house!
Saturday, Sept. 11, 2021

Heifers available for viewing after
5 PM + food and hospitality

**If you can't make it Sept 11, call us to
schedule a time to view the offering!*



Look for more sale information coming soon on
the *Butler Polled Herefords* FB page

BUTLER POLLED HEREFORDS

Jimmie, Andrea & Joel Butler • Cody, Jocelyn & Kyla Jo Washam

4195 South FR 53, Republic, Missouri 65738

417-838-4095 *Jimie* 417-838-3665 *Joel* 417-489-5450 *Cody*

Email: jocelyn.washam@hotmail.com www.butlerpolledherefords.com

Open Range Cattle Co.

Kristin Allen • Rogers, AR

816-729-6305 cell ksamizzou@yahoo.com

WATCH FOR PROGENY FROM THESE HARD WORKIN' MAMAS THIS FALL!



PRF 100W Sweet Dreams 405B
7 yr old • Trust x Durango



PRF 200Z Miss Elsa 702E
4 yr old • Red Bull x Proficient



PRF 408B Misty 711E
4 yr old • 408B x 8Y



PHILLIPS-RENNER FARMS

Amy Phillips

37144 Brady Creek Rd | Richmond, MO 64085

Cell 816-878-7305 nothead1@aol.com

Herdsmen: Angela and Amanda Phillips

www.prfherefords.com | Follow us on FB & Instagram



* BULLS FOR SALE *

GHR
GREGORY
HEREFORD
RANCH

Michael, Amy Hanna,
Emily & Sutton Gregory
10851 Range Line Rd.
Houstonia, MO 65333
660-287-1616

Robert & Sharon Gregory
12389 Chamberlin Rd.
Houstonia, MO 65333
660-620-4020

Celebrating over 70 years of raising registered Herefords!



Three Generations of
Family, Herefords, & History

CRUTSINGER HEREFORD FARM

Registered Herefords • Whitewater, Missouri

Larry, Angie, Morgan & Lauren Crutsinger
Larry Cell 573-979-9022 Angie Cell 573-979-1706

PARKER BROS POLLED HEREFORD SALE

Go with the Best

LABOR DAY / 9.6.21 / NOON CDT

Selling 70 lots!



DKM 179A NOEL Z426 910

12.24.18 / 44049551 / POLLED

MOHICAN THM EXCEDE Z426 x TH 403XT 172X GEMINI 179A
P.E. 5.1.21 TO 8.1.21 TO RMB/DKM AUDACIOUS 4013 779H



DKM 1230 DANIKA ROSE 48W 899 ET

12.17.17 / 43906664 / POLLED

TH 65R 45P TANK 48W x DKM 4R MS REVOLUTION 1230
P.E. 6.1.21 TO 8.1.21 TO RMB/DKM AUDACIOUS 4013 779H



DKM 525 FANCY 33Z 2003 ET

9.17.19 / 44144260 / POLLED

JDH VICTOR 719T 33Z ET x DKM 1113 COUNTRY GIRL 10Y 525
BRED A.I. 1.27.21 TO NJW 160B 028X HISTORIC 81E ET



DKM/GTN 902 TESSA 722 2101

9.1.20 / 44253803 / POLLED

F FINAL TEST 722 x DKM/GTN DANELLE KNOX 4040 902
SELLS OPEN

Parker Bros.
dkm

DAVID & PAULA PARKER

SALE LOCATION / 129 BANKS RD / BRADYVILLE, TN
DAVID'S CELL / 615.464.7008
EMAIL / DPLP@DTCCOM.NET
WWW.DKMFARMS.COM

DVAuction
Broadcasting Real Time Auctions

EDDIE BURKS / AUCTIONEER
TEL #4123 / TAL #4990

WITH GUESTS

G&T NICHOLS FARM
GARY & TAMMY NICHOLS / WOODBURY, TN
MENZIES CATTLE CO., LLC
JOSH MENZIES / MARSHFIELD, MO

Sims
Plus LLC

SALE BOOK REQUESTS

SIMS PLUS, LLC
MARK C. SIMS / 580.595.0901
EMAIL / SIMSPPLUSLLC@GMAIL.COM
WWW.SIMSPPLUSLLC.COM

Update

The Hereford Women of Missouri would like to wish all the juniors participating at the Junior National Hereford Expo good luck and safe travels. Junior Nationals will be held July 3-9, 2021 in Kansas City, Missouri. We will have a meeting on Saturday, August 14th, 2021 at 10 a.m. under the big tree East of the Hereford Barn during the Missouri State Fair. At this meeting we will be having our election of officers. The office terms are for two years. We will also be discussing plans for activities for the Missouri Hereford State Banquet and Sale.

Please watch our Facebook page for updates. We still currently have cookbooks that we are

selling for our fundraising project. If you are interested in purchasing a cookbook, please contact Tonya Bagnell.

We also would like to offer a big “Congratulations” to all the eighth grade, high school, and college graduates this year, and are moving on with their next endeavors in life.

We hope that everyone is having a fun and safe summer. It was nice to see so many Hereford families during the Missouri Cattlemen’s Show and be able to reconnect with them.

Have a fun and safe Summer.

Tonya Bagnell, Hereford Women of Missouri Secretary

Find us on 



AUG 14

Missouri State Fair Junior Show Sedalia, Missouri

MJHA meeting/pizza party - 30 minutes after the conclusion of the show

AUG 15

Missouri State Fair Open Show Sedalia, Missouri

AUG 17

Missouri State Fair Steer Show Sedalia, Missouri

Hereford Women of Missouri Officers

President – Katherine Fuller
816-547-1545
Katfuller1@aol.com

Vice President – April Miller
816-305-7490
Aprilmiller1732@gmail.com

Secretary – Tonya Bagnell
660-631-2109
Tbagnell6452@gmail.com

Treasurer – Marijane Miller
317-341-3846
millerherefords@yahoo.com

Mail \$15 Hereford Women of Missouri dues to
20500 Sioux Drive,
Lebanon, MO 65536

Queen Co-chairs –
Shelby Bagnell
660-630-3361
Shelby.bagnell@hughes.net

Anna Roth
573-579-7424
anna.roth15@gmail.com



Rancharita - Jalapeño Margarita

Ingredients

- 1 jigger, Tequila (we like Silver or traditional Jose Cuervo Gold)
- 1 part, beer (we like Shiner Bock or a good Mexican beer)
- 1 part, frozen Minute Made Limeade (in the can), prepared (about 1/2 cup)
- 3 slices jalapeno's (with or without the seeds)
- 1 - 2 slice(s) lime or lemon

Directions

1. In the bottom of a mixing glass (one for mixed drinks like martinis) place one sliced round of jalapeno (about 1/2 inch thick). Add to this 1 jigger Tequila, 1 part prepared frozen Limeade, 1 part beer and two more slices of jalapeno's.
2. Cover glass tightly with a lid and shake like crazy. This will blend the jalapeno's with your drink and make it wonderful!
3. Pour into a glass with a slice of lime or lemon and enjoy! The longer it sits the spicier it gets, and that's how I like it!

Enjoy! It's ohhhh so good!

The Ranch Kitchen Original Recipe - Alise Nolan | theranchkitchen.com

Mark your calendar!
118th *Semi-Annual Sale*



**CENTRAL MISSOURI
POLLED HEREFORD
BREEDERS ASSOCIATION**

Make plans to attend
NOVEMBER 27, 2021 • NOON

College of the Ozarks • Point Lookout, MO

Thank you to all the buyers and bidders for making
our Spring 2021 sale a huge success!



New members always welcome!

For more information contact:

Larry Day, Sales Manager

Central Missouri Polled Hereford Breeders Association

12139 Highway 135 | Pilot Grove MO 65276

660-834-4678 **Home** | 660-621-0812 **Cell**

Email: ljday@iland.net

www.centralmissouripolledherefords.com 

Update

Hello Missouri Juniors,

Summer show season is officially underway! Thank you to everyone who participated in our showmanship contest this year at the Missouri Juniors Cattleman's show. Congratulations to all of the showmanship and show winners!

The Junior National Hereford Expo (JNHE) is just a few weeks away. I hope everyone is as excited as I am!!! Be sure to follow the MJHA Facebook page for all news and updates regarding JNHE. See you all in Kansas City!

Kinleigh Bolin, Missouri Junior Hereford Association Reporter

Note from the Advisors Summer Reminders for MJHA Families

Thank You Showmanship Sponsors

A big THANK YOU to the prize sponsors of the Missouri Junior Hereford Association (MJHA) Showmanship Contest, which was held in conjunction with the Missouri Cattleman's Association All-Breeds Show in June. Grand champion showman in each age division received a custom silver belt buckle. Buckle sponsors included Day Stock Farm, JRE Livestock, Waters Farms and Butler Polled Herefords. Each reserve champion showman received a leather show harness from Brad and Sherry Hurst/H&H Show Supply. Each showmanship participant received a bottle of Full Dimension livestock shampoo from Tom Thompson. Thank you to all for your support!

MJHA State Fair Meeting

The Missouri State Fair is right around the corner. The MJHA will meet 30 minutes after the conclusion of the 4-H and FFA shows on Saturday, August 14, in the MFA Arena on the fairgrounds in Sedalia. At this meeting, members will elect new directors to the MJHA board and vote for Outstanding MJHA Members in the peewee, junior, intermediate and senior age groups. Board candidates must be dues-paid members in order to run for a director position. Only MJHA members who paid dues by April 1 will be included on the ballot for outstanding member awards. Please plan to join us.

State Fair Award Sponsors Needed

We are looking for sponsors for the awards that will be presented to the grand and reserve champion heifer, cow-calf pair, bull and steer for the Missouri State Fair (MSF) 4-H and FFA Hereford shows. Sponsorships are \$50 each and include your name on a metal plate on the front of the award. We need 16 sponsors to get both shows covered, so if you're interested please contact Isaac Rhode at 816-387-3405 or isaaceb2021@gmail.com. Thank you for your support!

Raffle for Boxel Uber Box/Double Blower

The MJHA is selling raffle tickets for a Boxel Uber Box/ Double Blower as a fundraiser to support our junior activities. Tickets are one for \$10 or three for \$20 and can be purchased from any MJHA board member or advisor. The winner will be drawn and announced at the Missouri Opportunity Sale on Sunday, December 5, in Sedalia. The winner does not have to be present to win and the Uber Box/Double Blower will be shipped directly to the winner. Raffle tickets will be available for purchase at the Junior National Hereford Expo in Kansas City, at the Ozark Empire Fair in Springfield and at the MSF and other events throughout the fall. To learn more about this offering, go to www.boxelmfg.com.

Jeff and Susan Rhode, Missouri Junior Hereford Association Advisors



Missouri Junior Hereford Association Officers

President – Haleigh Ferguson
Vice President – Isaac Rhode
Secretary – Tory Miller
Treasurer – Taylor Miller
Mail \$15 Missouri Junior Hereford Association dues to
20500 Sioux Drive, Lebanon, MO 65536

Reporter – Kinleigh Bolin
Fundraising Chair – Aiden Kleinman
Directors – Will Hendricks, Phillip Mueller, Gavin Rhode
Advisors –

Jeff & Susan Rhode
7765 NW Hwy NN, Stewartsville, MO 64490
816-261-4819 Jeff Cell or 816-261-4821 Susan Cell
Susan.rhode@yahoo.com

Brad & Shannon Mueller
2045 PCR 520, Perryville, MO 63775
573-517-2999 • Muellers29@yahoo.com

Eddie & Mary Roth
1178 NE Hwy J, Windsor, MO 65360
660-351-4126 • rothconcrete3@gmail.com



WPH Ranch

proudly introduces

WPH MGW 371B Hunter H100

DOB: 2/20/20 Reg. No.: 44150703

Monty & Georgia Williamson
(417) 247-0782

Geren & Emily Reavis
(417) 252-0291

975 Stillhouse Road
Mountain View, MO

— WPH Ranch —
Williamson Polled Herefords & Personalized Hospitality

NJHA Fed Steer Shootout Field Day

Sixty-five National Junior Hereford Association (NJHA) members and their families, along with several industry partners attended the inaugural NJHA Fed Steer Shootout Field Day hosted by HRC Feed Yards in Scott City, Kan., on April 17. The young cattle feeders who participate in the Fed Steer Shootout program traveled from 13 states and as far away as California, West Virginia and Georgia to learn about the industry and see how their steers entered in this year's contest are performing.

Lee Mayo, general manager of HRC Feed Yards welcomed the participants to Kansas and cattle feeding country. Scott County is home to roughly 300,000 head of cattle on feed within 10 miles of the feed yard. NJHA's partners in education, VitaFerm and Merck Animal Health, sponsored the educational program where attendees heard from industry leading speakers including Kevin Good from Cattle Fax who gave participants an overview of the industry across all sectors of the beef production chain and Dr. Kelly Bruns, Director of the West Central Research and Extension Center for the University of Nebraska was on hand to discuss evaluating the cattle in terms of yield and quality grades and what type of steers will be the most profitable. This was followed by a pick the steer contest in which six steers were evaluated and the results will be determined after the cattle are harvested in approximately 30 days.

There are 133 Hereford and Hereford-influenced steers on feed in the 2021 NJHA Fed Steer Shootout. Cattle were delivered to the yard in December and throughout the feeding phase contestants collect feed yard performance and carcass data and are given the opportunity to gain a broad knowledge of the cattle feeding and packing industries through a comprehensive educational contest filled with videos, quizzes, a performance portfolio and an essay contest.

The Fed Steer Shootout is exposing junior members to a vital part of the industry and setting them up with the tools and knowledge to be successful when it comes to feeding cattle. Bailey Morrell, NJHA Communications Chairman and participant in the shootout said, "A lot of our members see the showing and the barn, but don't see the end product and the hard work that goes into the feeding industry, so a little bit of real-world knowledge is what we've tried to provide our juniors within this program."

NJHA members have their steers at the HRC Feed Yards for the Fed Steer Shootout program. Several Missouri juniors have successfully participated in the contest in previous years.



MSF HEREFORD STEER EXHIBITORS

To receive added PREMIUMS Awarded by the Missouri Hereford Association



Your steer **MUST** be DNA Tested with the American Hereford Association:
To receive a DNA Kit
Call the AHA 816-842-3757

FOR MORE INFORMATION CONTACT

Matt Reynolds • 660-676-3788
Eddie Roth • 660-351-4126

38TH ANNUAL **MJCA** ALL-BREEDS JUNIOR SHOW

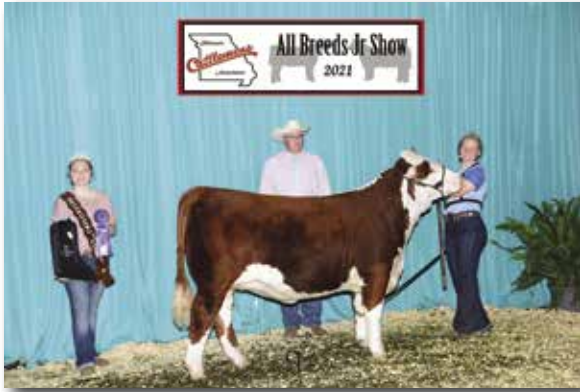
Missouri Junior
MJCA
Cattlemen's Association

June 12-13, 2021 | Sedalia, MO | Judge: Scott Bayer, Ringle, Wisconsin

Champion Heifer :

MH 322 Miss T-Bone 0302

3-2-20
Tory Miller



Reserve Champion Heifer :

MAV's Cotton Gypsy 012H ET

3-10-20
Addison Ward



Champion Bull :

MH 5280 Legacy 0624 ET

2-24-20
Taylor Miller



Reserve Champion Bull :

JRE Be Bold 2004

8-2-20
Jorja Ebert



Champion Cow-Calf :

GMC Sophistication with heifer calf TH MGT Cli Her Bug

2-22-21
Lexie Craig



Reserve Champion Cow-Calf :

PRF 408B Misty 711E with heifer calf PRF 6964 Miss Mckenzie 109J

1-27-17
Taylor McGlothlin



Champion Steer :

BSC 208Y Rocky 011

Wt 1140 lbs
Isaac Rhode



Reserve Champion Steer :

HAPP Ringo 219

Wt 1320 lbs
Haleigh Ferguson



Total Head: 611 • Total Exhibitors: 350 • Hereford Head: 95

Showmanship winners included the Junior Champion (8-13) to **Jorja Ebert**; and Senior Champion (14-21) to **Karsyn Kleeman**.

Together, putting

pretty

in the showing, pasture and on the plate.




Ace's Polled Herefords

Quality Bulls For Sale

Danny & Lila Fanning

21245 Hawthorne Rd. • Joplin, MO

417-609-1240 • acespolledherefords@yahoo.com

Like us on Facebook! 



Towerview Farm Herefords


Home of Aces Power Play

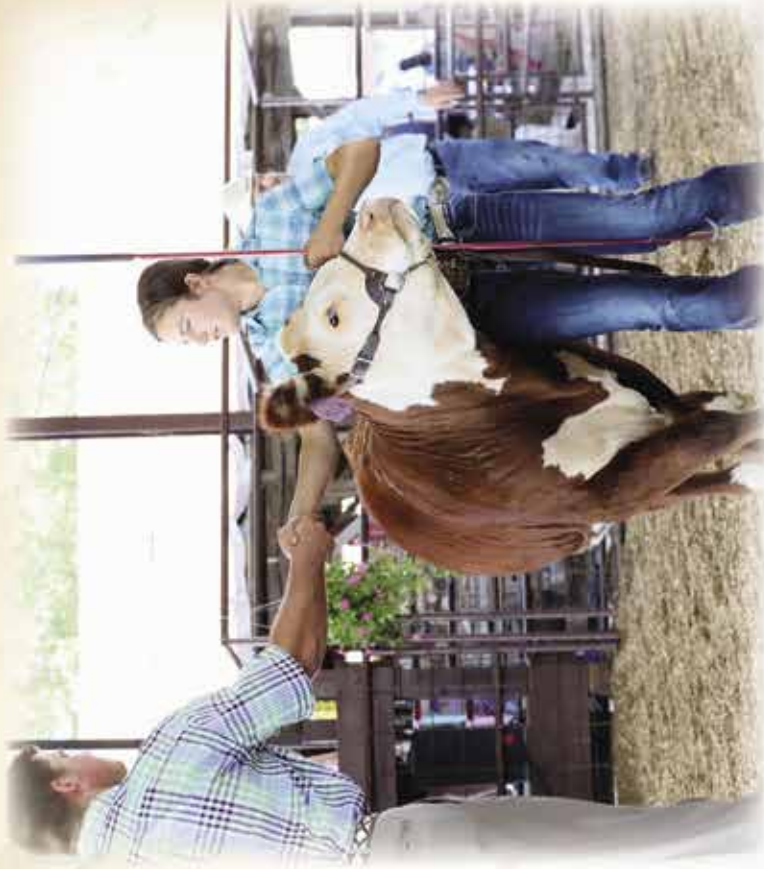
Phillip & Beth Robidoux

2384 Hobbs Rd • Noel, MO

417-393-9196 • bethrobidoux@gmail.com

towerviewfarmherefords.com

Like us on Facebook! 

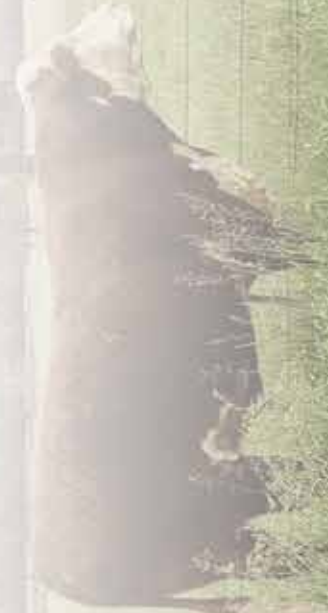


Available:

Bulls

Show Stock

Females



Mark your calendar
for our production sale
November 27, 2021!



"A Tradition That Works"
College of the Ozarks
Point Lookout, Missouri
Ben Carpenter (573) 289-8553
bcarpenter@cofo.edu



Our students are the backbone of our operation and we strive to raise breeding stock that will work hard to make producers money!

Triple Threat = Structure, Performance, & Eye Appeal



BR TERRI 2013

Reg: 43310215 DOB: 03/06/2012 Sire: BR DOMINO 8186



THA 190Z Trinity J614

Daughter of Terri who was the 2019 FWSS Grand Champion Cow-Calf Pair

Offering grade 1 embryos for sale out of BR Terri 2013

Triple H Acres

The Jackson Family • Miller, Missouri
Cell: (417) 827-1049 Ellen Cell: (417) 827-0338
triplehacres@live.com

Heifers, bulls & show prospects available!
Give us a call and stop by for a visit!

"Impact 1714"



Reg: 43767040

Owned with Knoll Crest Farm
Homozygous Polled • \$CHB leader

The only proven bull that leads in growth, carcass weight, rib-eye, marbling and \$CHB. A standout in the NRSP from birth to harvest including feed intake.

Semen available through Reed Enterprises.

EPDS AS OF 06/07/21																				
Calv. Ease Direct (%)	Birth Wt	Weaning Wt	Yearling Wt	Dry Matter Intake	Scrotal Circ.	Sustained Cow Fertility	Milk Growth	Calv. Ease Mature Weight	Udder Suspension	Teat Size	Corn Wt	Fat	Rib Eye Area	Marbling	BMI Index (\$)	SH Index (\$)	CHB Index (\$)			
EPD +4.9	+1.8	+64	+110	+0.4	+1.6	+17.5	+20	+52	-1.1	+106	+1.30	+1.10	+187	+0.073	+1.06	+6.83	+3.480	+5.586	+5.238	
Acc	.44	.68	.60	.61	.32	.49	.30	.25	-.33	.35	.43	.44	.45	.44	.43	.44	-	-	-	
Breed Avg. EPDs for 2019 Born Calves Click for Parameters																				
EPD	2.5	2.9	52	84	0.1	0.9	16.3	24	50	1.7	88	1.23	1.23	85	0.012	0.37	0.10	347	415	111



Neighbors Cattle Company
a partnership of LIII Farms and Hayden Farms
Rogersville & Fordland, MO
417-861-1755
L3Farms.com 
HaydenMachineryllc.com
neighborscattlecompany.com

Mark your calendar: **September 18, 2021**
Open House and Female Sale at the ranch.
Contact Tyler or Tom for more information.



WE WANT TO **THANK** OUR CUSTOMERS

FOR THE SUPPORT IN OUR SPRING 2021 SALE THIS YEAR

JR SIERRA 9569



44054046

Owned with Greives Herefords & Stuber Ranch. Smooth Polled, moderate framed, google eyed, stout square made bull that has a good foot and bone that combines calving ease and growth, he is a son out of a powerful pedigree that we think will work. NJW Long Haul & Churchill Lady 7189E a great R Leader Daughter.

CE	BW	WW	YW	DMI	SC	SCF	MILK	M&G	CEM
14.3	-1.3	58	94	0.1	1.7	27.3	34	64	6.6
MCW	UDDR	TEAT	CW	FAT	REA	MARB	BMI	MII	CHB
80	1.40	1.50	78	0.084	0.61	0.29	535	629	146

CHURCHILL JUMPSTART 828F



43919914

A dark red heavy muscled easy fleshing bull that is structurally sound with tremendous performance out of the great Churchill Ladysport 2205Z cow and Kickstart. Homozygous Polled. Owned with Churchill Cattle Company. For Semen Contact John or Dale. International Semen Available.

CE	BW	WW	YW	DMI	SC	SCF	MILK	M&G	CEM
1.4	3.3	75	121	0.4	0.7	15.7	23	61	0.2
MCW	UDDR	TEAT	CW	FAT	REA	MARB	BMI	MII	CHB
137	1.40	1.40	88	-0.006	0.72	-0.16	360	431	120

JOIN US APRIL 2, 2022

WE ARE ALWAYS SELECTING BULLS & FEMALES THAT ADD PERFORMANCE, CALVING EASE & CARCASS QUALITY TO OUR PROGRAM

ADE
POLLED HEREFORDS

JOHN & KAREN ADE • 765.583.4875 OR 443.366.2951
FARM: 13249 NW 4TH ST. • AMSTERDAM, MO

WWW.ADEPOLLEDHEREFORDS.COM



MENZIES CATTLE CO.

Josh & Mindy Menzies

5667 State Hwy. 38

Marshfield, MO 65706

417.425.5659

jmenzies79@gmail.com

MCCORKILL FAMILY FARMS

Registered Herefords

Mike and Myra McCorkill

152 E Dade 92 • Greenfield, MO 65661

417-637-5228 417-838-2073

Andy, Jenn, Molly & Marylee McCorkill

417-838-0583

Brant, Erin, Knox & Briggs Harvey

417-214-0313



Custom Semen Collection
Bull Housing
Semen Storage & Shipping
Breeding Supplies

PROTECT YOUR
INVESTMENT
PUT YOUR **BULL IN THE TANK**



8314 E. State Hwy C • Strafford, MO 65757

www.ShowMeGen.com

417-736-2125

GREGORY POLLED HEREFORDS

Since 1932



Kevin & Barbara Gregory

19469 Houston Road

Houstonia, MO 65333

660-568-3582 660-620-3585

gphthereford@gmail.com

Visit Gregory Polled Herefords on Facebook



As summer approaches, be on the lookout for cattle foot rot

Patrick Davis, University of Missouri Regional Livestock Field Specialist

“As temperatures increase and cattle dissipate heat by standing in ponds and other water sources, be on the lookout for foot rot,” says Patrick Davis MU Extension Livestock Field Specialist.

Foot rot can negatively impact cattle operation performance and profitability. Below, Davis will discuss foot rot and how to reduce the negative impact on the cattle operation.

“Foot rot is caused by causative bacteria entering the compromised skin or hoof wall integrity,” says Davis.

Moisture, injury, disease, and or nutrient deficiencies can lead to compromised skin or hoof wall integrity.

“Since trace minerals zinc, selenium and copper are important for skin and hoof wall integrity, deficiencies in these areas can increase the incidence of foot rot,” says Davis.

Davis urges cattle producers to provide adequate level of these minerals free choice to their cattle.

“Combination of skin or hoof irritation by rough surfaces and cattle standing in the pond or other muddy areas can increase the incidence of foot rot,” says Davis.

Davis urges cattle producers to reduce the time cattle are standing on rough surfaces such as rocks, gravel, and concrete to reduce the incidence of foot rot. Furthermore, Davis urges cattle producers to implement heat stress reduction strategies to reduce time cattle are standing in the mud and pond to help reduce the incidence of foot rot.

“Lameness is a typical symptom of cattle foot rot,” says Davis.



This symptom is brought on by other issues, which include swelling and redness of interdigital tissue and adjacent coronary band. There will be a foul odor associated with foot rot, which is necrotic lesions in the interdigital space. Left untreated the infection continues with swelling around both digits and the hairline of the hoof causing separation of the claw.

“Since cattle lameness can influence performance and operation bottom line it is key to identify and treat foot rot immediately,” says Davis.

Davis urges cattle producers to consult a veterinarian to develop a plan for understanding the symptoms of foot rot and proper treatment protocol. Treatment options should begin with problem identification, cleaning the foot and providing topical antimicrobial treatment. Pain relief might be recommended by the veterinarian.

Improvement should be seen in three to four days. If not, consult a veterinarian for advice on treatment for more severe cases.

For more information on cattle foot rot contact your local MU Extension Livestock Field Specialist.



Day's Family Farm


Larry and Pam Day

12139 Hwy 135 • Pilot Grove, MO 65276

660-834-4678 home

660-621-0812 cell

ljday@iland.net

www.daysfamilyfarm.com 

FOR SALE!

WMC DFF 001A JETSON 19G

Reg #: 44063918

DOB: Jan 21, 2019

Actual Birthweight: 71#

Sire: Gerber Anodyne 001A

Dam: CMF 9A Sara 203C

We have moved entirely to spring calving! Offering 1/2 interest 1/2 possession for fall breeding season.



Celebrating 60 Years in the Hereford Business!

Hereford Member Spotlight

Determination Creates Bright Future

Andrew and Haleigh are the children of Marty and Kim Ferguson. They enjoy their Hereford cattle operation with tasks often performed as a family.

Humble beginnings were the start for so many cattle breeders. Some grow up in the industry their whole lives. There are some producers who are now third, fourth, fifth... generation Hereford breeders. Yet, for some, they are creating their own trail as the first in their family to breed and raise the white faces we all so dearly love.

The latter is true for Haleigh Ferguson, the daughter of Marty and Kim of Smithton, Missouri. When you talk to Ferguson, you can instantly tell in her voice how much love she holds for the Hereford breed of cattle and agricultural way of life. It's the path she's chosen.

In 2010, Ferguson's father was pouring concrete for Eddie Roth of Roth Hereford Farm, Windsor, Missouri. Ferguson's brother Andrew came up in conversation and Eddie pushed the family to get a steer for him – the breed Hereford of course.

"I don't remember really how it all started from there," Ferguson laughed, "but my first heifer from Roths was named 'Daisy'."

Marty and Kim must have been OK with having a few extra critters around, as today Ferguson Polled Herefords is home to forty head on the family farm.

"Haleigh's passion for animals and the love she has for them made it an easy decision for Marty and I to invest in and grow this project for her," Kim said.

Today, Ferguson has maintained several progeny in the herd that go back to that first show heifer. Together the family tackles the duties of caring for the cattle, although Ferguson is sure to feed her show cattle before work every morning and partake in care for them in the evenings.

When asked what is her favorite part of being a Hereford breeder, Ferguson can't pinpoint just one part of the production cycle.

"I like seeing the whole process through!" said Ferguson.

While she admits some cows are pretty special to her, the calves and their sweet faces are hard to be overlooked. One thing about it, the care at the farm is always of high priority and you better bet each animal will likely be named.

The memory of her first Junior National Hereford Expo (JNHE) is one Ferguson will always treasure. Her heifer "Candy Kisses" went with her to Grand Island, Nebraska, to make their debut on the national stage. For what began as an animal project, Ferguson soon realized her involvement in the junior Hereford associations was about more than production agriculture.



"Being involved in the junior Hereford events has brought me out of my shell," said Ferguson. "I get to meet new friends. I'm really blessed to have parents that support me in this."

Ferguson and her mom ventured to Nebraska on their own and were in the middle of a really bad summer storm during their travels. They remember seeing a stock trailer along the Interstate and thinking together that maybe the out-of-state trailer was headed to the very same place! They stuck close by through the poor visibility. Ferguson laughs recalling meeting up with the trailer later that evening in tie outs. Bonds of friendship were already being made before she even fully entered the grounds.

At her first JNHE Ferguson was full bore into activities participating in the heifer show, illustrated speech, Hereford Bowl and the sales contest. She's hooked on attending each year and looks forward to the event in Kansas City this month and hopefully exploring a new location next year.

Ferguson has been involved on the state level also. In 2019 she served as the Missouri Hereford Queen enjoying representing the breed and state at various events. She was fortunate to serve as royalty at the American Royal show and help with presenting awards. The Queens Tea at the JNHE is also a fond memory where she had the unique opportunity to meet other girls with like-interests.





Also, this year Ferguson is serving as the Missouri Junior Hereford Association (MJHA) President. She points out that she gains as much from the younger juniors as she does from developing leadership skills in the position.

"I want to be approachable to juniors needing help," said Ferguson. "It's also motivating to me to watch younger juniors; they always have a way of cheering you up."

And approachable is just the right word to describe Ferguson. She was selected to lead the junior state organization because of just that.

"Having someone like Haleigh to look up to is amazing especially when

Top: Today, Haleigh is the President of the Missouri Junior Hereford Association. For younger juniors such as Emmalee Mueller having a familiar face at events such as the Junior National Hereford Expo has made all the difference in their confidence, allowing them to get the most out of the junior program.

Left: Junior experiences have allowed Haleigh to travel, meet new friends and build on her leadership qualities. She loves her Hereford cattle, too.

she was the Missouri Hereford Queen," said Emmalee Mueller, MJHA member. "Haleigh always treats people the same no matter what."

Ferguson acknowledges that everyone started from somewhere and focuses her interests today on excelling her herd genetically. The family has recently implemented a more robust AI program with goals of increasing the genetic

impact of their herd. With more numbers now, Ferguson Polled Herefords is able to offer some of their calf crop up for purebred stock to other producers.

"I'm just really self-conscious when it comes to producing our Hereford cattle," admits Ferguson. "I'm always comparing our calves to others but this year we are gearing up to market cattle privately and at the Missouri Opportunity Sale."

Currently accepted into the Metropolitan Community College, Ferguson will be commuting to the Kansas City area starting in the fall for vet tech school. This summer Ferguson is enjoying a position as a vet assistant at a small animal practice in Sedalia, so she is excited at the opportunity to learn more regarding this career field with aspirations of working for a large and/or small animal practice upon graduation.

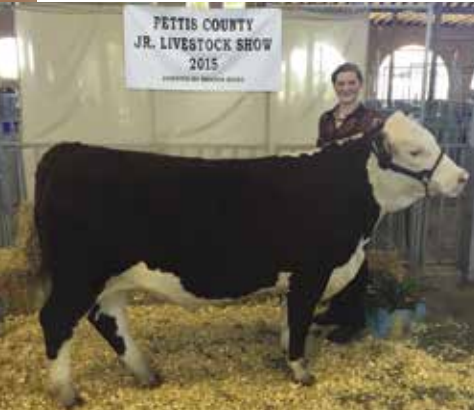
Three year ago, Ferguson started a Golden Doodle puppy kennel with a dozen offspring. She's now marketed three litters in total. Ferguson learned a lot about marketing the puppies through this project and hopes to progress her Hereford operation's marketing with a similar plan. She has always been extremely open minded to watching others and learning from the way they do things while being aware that everyone does things just a little differently.

AbraKadabra Cattle Company of Columbia, Missouri, has provided a lot of mentorship to Ferguson over the last several years.

"She's a fast learner and has the drive and determination it takes to make it to the top!" said Terry Elwing, owner of AbraKadabra Cattle Company.

Ferguson has purchased several show heifers from Elwing's family and is appreciative of the guidance they have given her. She's been able to learn from other breeders such as AbraKadabra on how to mate different pedigrees and what exactly things such as EPDs mean within her herd.

"Haleigh has been a delight to work with over the past five years," said Elwing. "We have witnessed her grow not only as a Hereford



Left: Haleigh enjoyed serving as the Missouri Hereford Queen in 2019. She even got to present a ribbon to her brother Andrew during the Missouri State Fair in 2019.

Middle Left: Haleigh's first heifer Daisy made quite the impression on her. While the cow is now deceased, Haleigh has her progeny to continue in her herd.

Middle Right: Roth Hereford Farm helped Haleigh get her start. She remembers her first steer Curly Fries and the bond they made together.

Right: Haleigh has exhibited progeny from her first heifer Daisy, allowing her to be active in the bred-and-owned shows.

breeder but as a productive member of the agriculture community.”

If ever the MJHA has influenced a young person, Ferguson is the perfect example of the reason investing into our youth is so valuable. As she mentioned, referring to the younger juniors in the association, “Our breed is in good hands.”



Left: Haleigh and her mom Kim have ventured to numerous cattle shows together, time they both cherish together.

Middle: As the Missouri Hereford Queen, Haleigh enjoyed being a role model to younger children including reading books about agriculture in the local school.

Right: Haleigh credits her dad’s open mind to her family’s involvement in cattle. His willingness to learn right alongside Haleigh has created a bond between them.

The Junior National Hereford Expo (JNHE) will be held again in Kansas City, Missouri, July 3-9. This year’s theme will be Hereford Spectacular.



MA+
MATERNAL ADVANTAGE

Requirements

- Replacement females sired by a Hereford bull battery ranking in the top 50% of the breed for the Baldy Maternal Index (BMI) or the Brahman Influence Index (BII) with transferred bull ownership.

Benefits

- Genetic selection and improvement tools
- Marketing support

For more information visit hereford.org/maternal-advantage/

DPH R LEADER LOG 8027 VIC 717



{DLF,HVF,IEF}
P43864463
Calved: 3/11/2017
Tattoo: RE 717

Homozygous polled
Pigmented
DOD dam

Stop by for a visit anytime



Gary and Frances Duvall
1082 Hwy. 97
Lockwood, MO 65685

417-827-2163

duvallherefords@keinet.net

Herdsmen:
Miguel Cifuentes
417-793-5082

CE	BW	WW	YW	DMI	SC	SCF	MM	M&G	MCE	MCW	UDDR	TEAT	CW	FAT	REA	MARB	BMI\$	BII\$	CHB\$
-1.9	4.0	64	114	0.4	1.4	21.3	26	58	1.6	116	1.40	1.40	72	0.054	0.39	0.05	423	504	113

HYALITE ON TARGET 936 (SOD){DLF,HVF,IEF,MSUDC} SCHU-LAR ON TARGET 22S (SOD){CHB}{DLF,HVF,IEF,MSUDC}

R LEADER 6964 (DLF,HVF,IEF,MSUDF) HYALITE'S LASS 310 (DLF,HVF,IEF)

P43500058 R MISS REVOLUTION 1009 (DOD){DLF,HVF,IEF} MSU TCF REVOLUTION 4R (SOD){DLF,HVF,IEF}

R MISS WRANGLER 3007

DPH LOGIC VIC R139 VIC 8027 (DLF,HVF,IEF) KJ C&L J119 LOGIC 023R ET (SOD){DLF,HVF,IEF}

DPH 8027 VIC WC 10H 222 (DOD) DPHR139 VIC264 REB 6053 (DLF,HVF,IEF)

P43337318 DPH 10H CLASS ACT 237 VIC 710 (DLF,HVF,IEF) DR WORLD CLASS 517 10H (SOD){DLF,HVF,IEF}

DPH 237 35C REBEL 261 409

HW

SELLING SHOW HEIFERS, SHOW STEERS, HERD BULL PROSPECTS, BRED HEIFERS, PREGNANCIES, AND FROZEN GENETICS!

A N N U A L O N L I N E

Production Sale

TH



OCTOBER 9, 2021

OPEN HOUSE AT THE FARM



OCTOBER 12, 2021

HOSTED BY SHOWSTOCKPLANET

THOMPSON HEREFORDS

1110 SW WATSON RD. AMITY, MISSOURI
TOM, LAURA, MADELYN, AND BRYNLEE THOMPSON
TOM: 816-284-3276 DUSTY JONES: 816-752-5967



Events & Deadlines

JULY

JULY 3-9 Junior National Hereford Expo
Kansas City, MO

JULY 30 Ozark Empire Fair Junior Show at
1:00 PM - Springfield, Missouri

JULY 31 Ozark Empire Fair Open Show at
1:00 PM - Springfield, Missouri

AUGUST

AUG 14 Missouri State Fair Junior Show
Sedalia, Missouri
MJHA meeting/pizza party - 30 minutes
after the conclusion of the show

AUG 15 Missouri State Fair Open Show
Sedalia, Missouri

AUG 17 Missouri State Fair Steer Show
Sedalia, Missouri

AUG 27 Missouri Hereford Association
Board Meeting at 4:30 p.m.
Aufdenburg Polled Herefords,
Jackson, Missouri

AUG 27-28 Missouri Hereford Association
Annual Field Day - District 9

SEPTEMBER

SEPT 6 Parker Bros Polled Hereford Sale
Bradyville, Tennessee

SEPT 10 Missouri Opportunity Sale Entry
Packets Mailed

SEPT 13 Butler Polled Herefords-Open
Range Cattle Co. Maternal
Excellence Online Sale
Lowderman Auction Options

SEPT 16 Southeast Missouri District Fair
Cape Girardeau, Missouri

SEPT 18 Neighbors Cattle Company Open
House and Female Sale
Rogersville, Missouri

Around the Barn

Obituary

Donald Dale Sissel, 69, Strafford, passed away Wednesday, March 31, 2021, at the Springfield Livestock Marketing Center in Springfield of an apparent heart attack.

He was born on October 2, 1951, in Springfield, Missouri the son of the late Howard Dale and Vergie Ann (Keltner) Sissel. He was also preceded in death by his father-in-law and mother-in-law, Bob and Blanche Webb.

Don fiercely loved his kids, his grandkids, his wife and his cattle. Though we're not sure which came first.

If Don liked you, maybe you got a nickname or some good-natured teasing. You probably had a nickname for him too. Don, Donnie, Col. Don, Fletch, Big D, Donte, he answered to them all. Don

SEPT 25 Missouri Opportunity Sale Entry
Deadline by U.S. Mail (postmarked)

SEPT 26 WMC Cattle Co. - Ladies of the
Ozarks Vol. III Sale
Wasola, Missouri
OCTOBER

OCT 2 Journagan Ranch Missouri State
University Production Sale
Springfield, Missouri

OCT 9 Bonebrake & Guest Female Sale
Strafford, Missouri

OCT 12 Abrakadabra Cattle Co. & Guests Female
and Frozen Genetics Online Sale

OCT 12 Thompson Herefords Annual
Online Production Sale
Show Stock Planet

OCT 15 MHA, MJHA Investment, Hereford
Women Scholarship Deadlines

OCT 17 Reynolds Herefords Annual
Production Sale
Huntsville, Missouri

OCT 22-24 AHA Annual Membership Meeting
and Conference
Loews Kansas City Hotel

OCT 23 American Royal Junior
Hereford Show
Kansas City, Missouri

OCT 24 American Royal Open
Hereford Show
Kansas City, Missouri

OCT 31 WMC Cattle Co. Bull & Commercial
Female Sale
Springfield, Missouri

NOVEMBER

NOV 1 Nomination deadline for MHA
2021 awards

NOV 27 College of the Ozarks /
CMPHBA Sale
Point Lookout, Missouri

never knew a stranger and always wanted to stop and say hello and have a chat.

As a family, the Sissel kids and now grandkids showed cattle with Don at the helm and sometimes the biggest duck in the puddle. Even after their kids had grown and gone, Don and Kathy remained involved with a few youth organizations like the Missouri Junior Hereford Association. In 2008, Don and Kathy were honored as Advisors of the Year for the National Junior Hereford Association.

Don loved working with not only his kids but all kids in agriculture. Through the years, he was actively involved with the 4-H Club as a leader, Greene County 4-H Foundation, Republic FFA Alumni, Greene County Extension Council and so many more.

Professionally, Don wore many hats. He worked at the Springfield News-Leader for 32 years, retiring in 2007. The past 15 years, he found his dream career,



Fall Sales Approaching

Planning a sale takes months of hardwork, scheduling and preparation. Don't let your GE-EPD testing keep you from reaching the finish line on time. The American Hereford Association has released this timeline to make sure you have information back to include in your sale catalog.

It's always a good idea to create a timeline with deadline dates clearly defined, so your operation can follow for sale goals. If you already have a date deadline sheet with when you are going to picture, confirm sale-day details, catalog deadlines, etc..., adding dates for gathering and submitting samples to the lab is a great idea, so you stay on track!

From left to right: Kathy and Don Sissel received the Friends of the Missouri Hereford Association Award in 2017.



working with his good friend, Alan McMurtrey and Mac's Vet Supply. In 1978, Don attended the Worldwide School of

Auctioneering. Colonel Don got to have a few memorable sales of over the years and was certainly something he always enjoyed.

Don and Kathy celebrated their 50th wedding anniversary in February with a small family dinner. He and Kathy loved each other deeply and were side-by-side most of the time. They were a true example of a strong marriage and how to love your spouse.

Lately, Don and Kathy had started their next chapter in retirement and began traveling and RVing. They enjoyed time traveling around exploring in their fifth wheel and had many trips set for this spring and summer.

He is survived by his wife Kathy, two daughters, Carrie Sissel and her husband Geof Waller, and Sarah DeGuire; a son, Justin Sissel and his wife Lisa; five grandchildren, Spenser, Anna, Parker, Cole, and Lyla; a sister, Brenda Fuller; several nieces, nephews, and many other relatives and friends.

In lieu of flowers, the family would appreciate considering a donation in Don's memory to support the Missouri Junior Hereford Association, c/o Taylor Miller, 20500 Sioux Drive, Lebanon, MO 65536.

Raising Quality

HERD BULLS & REPLACEMENT HEIFERS



FTF Relevant 816



INTRODUCING OUR NEW HERD SIRE • 43911639



Mike, Jess, Jimmy, Nick & Kylie Jordan
 36258 State Hwy A • Warrenton, MO
 Jess: 636.359.3741 • Mike: 341.486.5272
 jordanherefords@yahoo.com
 www.jordanherefords.com

LIKE US ON FACEBOOK!



HUTH PROSPECTOR K085
FTF PROSPECTOR 145Y
 FTF CHICK A BOOM 7227T

TH 122 711 VICTOR 719T
FTF VERONICA 4107B (DOD)
 FTF MS REVOLUTION 2424Z (DOD)

RRH MR FELT 3008
 HUTH 34A PAULA 68F (DOD)
 FTF BOMBARDIER 309N
 FTF LEANNA 480P

DRF JWR PRINCE VICTOR 711
 KBCR 19D DOMINETTE 122
 MSU TCF REVOLUTION 4R
 JR MISS RIGHT 950J (DOD)

Put some
CONFIDENCE
 in your herd

FTF CONFIDENCE 6113D
 Reg: 43751234 Polled
 DOB: 09/08/2016

CE 4.0 BW 0.8 WW 74 YW 118 SC 1.3 Milk 35
 M&G 72 CEM 3.2 MCW 108 Teat 1.5 CW 71
 Fat 0.054 REA 0.31 Marb 0.16 CHB \$96

**Owned with
 Falling Timber Farm**

Semen available through Beef 360!

STEINBECK FARMS

Rick and Laurie Steinbeck
 Hermann, MO

573-680-0954 cell 573-237-2668 home

Available this spring:

a select group of high quality Hereford females at private treaty.

Sale Index

- 117th Semi-Annual Sale : Central Missouri Polled Herefords Breeders Association
- Falling Timber Farm 12th Annual Bull & Female Sale

117th Semi-Annual Sale : Central Missouri Polled Herefords Breeders Association

Cuba, Mo. | April 10, 2021
Auctioneer: Jack Lowderman
Reported by: Larry Day

Lots	Gross	Average
20 pairs		\$2,389
11 open heifers		\$1,523
4 bred heifers		\$1,813
6 bred cows		\$1,683
7 bulls		\$2,664
8 commercial lots		\$1,675
56 total lots	\$113,925	\$2,034

TOP PAIR LOT

Lot 20-\$2000 consigned by Days Family Farm Pilot Grove MO; sold to Cavanaugh Farms, Cuba, MO
Lot 20A-\$2500; 8-17-20 Jalapeno 973E daughter to Circle R Cattle, Huntsville, MO

TOP OPEN HEIFER LOT

Lots 43 & 45-\$1700 spring 2020 Falling Timber Farms Bloodline Heifers consigned by Schrader Polled Herefords, Wooldridge, MO; sold to Lizzie's Polled Herefords, Jackson, MO

TOP BRED HEIFER LOT

Lot 16-\$2300 Sired by UPS Sensation 2504ET bred to WMC X103 Mandate, consigned by Choate Polled Herefords; sold to Lizzie's Polled Herefords, Jackson, MO

TOP BRED COW LOT

Lot 23-\$2000 3-yr-old sired by Prime Product 513C, bred to WMC DFF Jetson; consigned by Days Family Farm; sold to Brian Haupt, Millersville, MO

TOP BULL LOT

Lot 15-\$3250 9-19 sired by Boyd Blueprint 6153;

AHA Announces Plans for 2022 Cattlemen's Congress and National Western Stock Show

A decision has been made on the recognition of national shows for January 2022.

The American Hereford Association (AHA) Board of Directors met this week during their spring board meeting to make a decision about recognition levels of the Cattlemen's Congress in Oklahoma City, Okla. and National Western Stock Show (NWSS) in Denver, Colo. The AHA Board voted to host the 2022 National Show and National Hereford Sale during the Cattlemen's Congress in Oklahoma City.

The shows and exhibitor surveys were all taken into consideration during this decision. It was decided that Cattlemen's Congress in Oklahoma City will host the 2022 National Show and National Hereford Sale, junior show and pen show.

Following Cattlemen's Congress, AHA will recognize the NWSS as a Regional Point Show. The AHA will share more information and schedules with its membership and interested parties once both venues have been notified and establish final changes.



consigned by Choate Polled Herefords; sold to Ryan Grimes, Archie, MO

TOP COMMERCIAL LOT

Lot 56-\$2300 2-yr-old BWF w/ 3 week old BWF hfr calf sired by FTF Porterhouse; consigned by Dennis Kauffman, Jefferson City, MO; sold to James Kampeter Argyle, MO

Falling Timber Farm 12th Annual Bull & Female Sale

Marthasville, Mo. | March 20, 2021
Auctioneer: Jesse Bolin

Reported by: Joe Rickabaugh

Huge crowd, great food and drink, beautiful spring day, hardworking family that breeds solid good cattle that work for their customers equals another solid sale for Falling Timber Farm. Congratulations on a sale to be proud of.

Lots	Gross	Average
31 bulls		\$4,040
10 spring calving pairs		\$3,800
2 fall pairs		\$5,325
7 bred heifers		\$2,986
14 open spring yearling heifers		\$1,954
1 open fall heifer		\$5,000
65 registered lots		\$3,494

3 black baldy bred heifers \$3,967
2 black baldy open heifer \$2,225

TOP BULL

Lot 2-\$6,250; 1.18.2020 son of Huth FTF Torque C002

TOP SPRING PAIR

Lot 41-\$7,600; sired by MSU TCF Revolution 4R with heifer calf 1.29.2021 sired by FTF Confidence 6113D

TOP FALL PAIR

Lots 52 & 52A-\$6,300
Lot 52-\$3,000; 9.1.2016 female sired by FTF Porterhouse 455B selling bred back to APHG 4356 Colorado 15G
Lot 52A-\$3,300; 9.1.2020 heifer calf sired by BG LCC Perfecto 84F

TOP BRED HEIFER

Lot 60-\$3,400; 9.1.2019 heifer sired by Huth FTF Torque selling bred to FTF Relevant 831F

TOP SPRING OPEN HEIFER

Lot 73-\$2,400; 1.2.2020 sired by FTF rime Product 226Z

TOP FALL OPEN HEIFER

Lot 51-\$5,000; 8.24.2020 sired by NJW 79Z Z311 Endure 73D ET

Top Black baldy bred heifer-\$4,100
Top Black baldy open heifer-\$2,500

Missouri Hereford sales were well attended this spring.
@Falling Timber Farm



Yearling bulls and heifers for sale!

Contact us for further details.

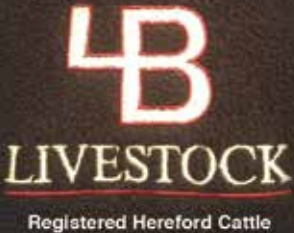
Tri-L Polled Herefords

Jack and Alicia Lewis • Katherine Fuller • Conner Bolch

19417 NE 178th Street • Holt, Missouri 64048

816-628-5571 Home • 816-421-4075 Business

816-797-8020 Cell



4B LIVESTOCK
Registered Hereford Cattle

Scott & Tammy Adam
Bailey, Britney, Brooklyn & Brayde
735 SE Wexford Rd
Lathrop, MO 64465

Scott 816-809-7094
Tammy 816-809-7049

4BLvstk@gmail.com
adamtammyd@gmail.com

20th Annual Production Sale
SUNDAY, OCTOBER 17, 2021

REYNOLDS HEREFORDS

MATT, BARB, TYE & MAKAYLA
HUNTSVILLE, MISSOURI
MATT: 660.676.3788

WWW.REYNOLDSHEREFORDS.COM

LIKE US ON FACEBOOK



WF

Waters Farm
Glen, Kyla, Kristin & Grant Waters
23795 D Hwy
Norborne, MO 64668
660.484.3127 home phone
660.707.3646 mobile phone
gwaters@landolakes.com

Ferguson Polled Herefords
SMITHTON, MO

Marty, Kim, Andrew, and Haleigh
660-287-8249 OR 660-287-6485

PRIVATE TREATY OFFERINGS AVAILABLE



H&H Herefords
Brad, Sherry & Justin Hurst
Nevada, MO
417.321.2350 B 417.321.0423 S
sherry@handhshowsupplies.com

Rapp Premium Genetics
Chris & Reba Rapp & family
Rockville, MO
660.679.1019 C 417.684.2424 R
rappreba@gmail.com

H&H Show Supply
Authorized Weaver
Leather Livestock Dealer
in Southwest Missouri

WEAVER LEATHER LIVESTOCK

ORDER ONLINE NOW!
www.handhshowsupplies.com



Laze-D Herefords
Dennis and Sherry Michael
17770 S. 425 Rd.
Jerico Springs, MO 64756
417-398-0019
lazedherefords@hotmail.com

Bakerville Cattle Co.
Jon and Debra Baker
111 E. North
Timewell, IL 62375
217-653-7546

Registered Red and Black Herefords Available
- Combining the best of both worlds -

ROTH HEREFORD FARM

Eddie and Mary Roth
11752 NE Hwy J
Windsor, MO 65360
Cell 660-351-4126

Cattle for sale private treaty!

DECKER HEREFORDS

Sue Decker
La Plata, NM • 550-330-3179

Jared, Jaden, Jensen, & Maesyn Decker
Centralia, MO • 573-819-0837

Visit us online at www.deckerherefords.com

KAUFFMAN HEREFORD FARM

908 Lonia Drive,
Jefferson City, MO 65109

Dennis Kauffman
573-291-6744

Bob Kauffman
573-635-6632

EMAIL: dirckman@aol.com

LUDWIG


FARMS

Dale, Rhonda, Trent, Claire & Troy
 Linn, MO
 Phone: 573-338-6000
 Email: ludwigdale@yahoo.com

HERD SIRES
 Ludwig Catapult X-Box C21 ET
 Ludwig Trust Ranger C19

AI SIRES
 KFC Bennett Trust B279 • Endure • Munson
 Final Test • Jalapeño • Torque

Souders Farm
Registered Polled Herefords
 John, Nancy, Tyler & Dakota
 Rosebud MO
 (573) 764-4718
 stherefords@gmail.com




District 7: Director - Mike McCorkill

ROCKING F POLLED HEREFORDS

Frank and Pam Flaspohler
 222 County Road 402
 Fayette, Missouri 65248
 Phone: 660-537-4809
 E-mail: fwf@rockingf.com



PRODUCING POLLED HEREFORD SEEDSTOCK

District 6: Director - Rick Steinbeck

Blue Ribbon Farms
 11768 W. Farm Rd. 34 • Walnut Grove, MO 65770
 Jeff & Stephanie Rawie
 417-209-5538 • jeffrawie24@yahoo.com




BRF 2296 TORCH 3H
 Reg: 44147182
 Sire: UPS SENSATION 2296 ET

BRF MISS SPARK 2H
 REG: 44146057
 Sire: UPS SENSATION 2296 ET

AMR Alex Roth
Cattle Co. Polled Herefords
 Alex and Michaela Roth
 Altenburg, MO
 (573) 576-5141

Dale, Lindy & Anna Roth
 Altenburg, MO
 (573) 579-3473



CHOATE
Polled Herefords

Mike and Cathy Choate
 417-880-3925
 Nathan and Julie Warner
 417-298-5968

5373 South 226th Road
 Pleasant Hope, MO 65725
 choateherefords@gmail.com

Biglieni
FARMS

Tom Biglieni and Jill Elwing
 2109 Des Peres Rd. • St. Louis, MO 63131
 417.827.8482 cell
 tgbig@sbcglobal.net • elwingjill@hotmail.com


DUVALL
 Polled Herefords

Gary and Frances Duvall
 1082 Hwy 97 • Lockwood, MO 65682
 417-232-4817 H 417-827-2163 C
 duvallherefords@keinet.net

Herdsmen: Miguel Cifuentes 417-793-5082

Bourbeuse Bend
Herefords

Jerry & Cheryl Voss
 Blake & Jordann Voss
 573-368-9001 (Blake)
 Polled & Horned Genetics



Beaufort, MO

"Today's Cattle With Tomorrow's Genetics"

Holmes Hereford Farm
 Greg & Vicki Holmes
 56 State Hwy A
 PO Box 482
 Wheaton, MO 64874
 Phone: 417-652-7483
 Cell: 417-848-9010
 holmesfs@windstream.net



Horned & Polled Herefords

Visitors Are Always Welcome



McMillen's Toothacre Ranch

Trent & Mary McMillen
& Family
9128 W. Farm Road 30
Walnut Grove, MO 65770



417-788-2787 home • 417-830-7257 cell • 5inthehive@gmail.com

R&L Polled Herefords

4401 S. 200th Rd.
Halfway, MO 65663

*Herd Sire Prospects
Select Females*

Kody Agee, Showman
417-399-7940

Lendell Voris
417-445-2461



ERIC, JR.
417-860-7151

AURORA, MO

ERIC & KAMI
417-737-0055

District 8: Director - Travis McConaughy

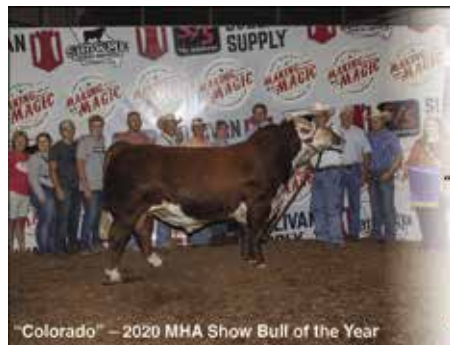


Contact Frank or Cami at the home 513-724-6070. Or call 573-243-1022 or 573-287-5506 with any questions or email at networthfeedsllc@outlook.com

- Heifer Development
- Bull Development
- Backgrounding of steers and commercial heifers
- Marketing Assistance
- Custom Blended Feeds



District 9: Director - Darrell Aufdenberg



APH

**Aufdenberg
Polled Herefords**

"Quality You Can Count On"

Darrell Aufdenberg
Jackson, Missouri
(573) 270-6755 cell
aufdenbergd@yahoo.com


Colorado - 2020 MHA Show Bull of the Year

LPH


Lizzie's Polled Herefords

Kenny, Michelle & Elizabeth Spooler
1788 County Road 347
Jackson, MO 63755
573-270-4145 Kenny - 573-270-9221 Michelle
lphspoolerfarms@aol.com

Out of State



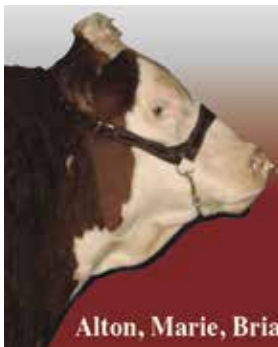
Toby & Debby Dulworth
270-224-2993



**Herefords
since 1964**

Pasture-Selected **Made to Graze**

website: dogwoodherefords.com 2492 Kirkman, LaCenter, KY 42056
dogwood@brtc.net



MALONE

Hereford Farm

1371 Road F ~ Emporia, KS 66801
Phone/Fax: 620-342-7538
Alton's Cell: 620-794-2358
ammalone@lewbcop

Alton, Marie, Brian, Dustin and Michelle Malone

SHINGLE OAKS POLLED HEREFORDS

Eric, Cindie, Cassie & Krista Allscheid
8052 Andy Road • Waterloo, IL 62298
618-939-5376
Eric Cell - 618-593-9642

Visit us at Shingleoakspolledherefords.com





TOWNER FARM

HEREFORDS POLLED & HORNED

John Towner
320 E 47 Hwy
Cirard, KS 66743
P: 620-724-6636
C: 620-249-6636
john@townerfarm.com

www.townerfarm.com

4B Livestock	31	Laze-D Herefords	31
Ace's Polled Herefords	17	Lizzie's Polled Herefords	33
ADE Polled Herefords	21	Ludwig Farms	32
Alex Roth Polled Herefords	32	Malone Hereford Farm	33
AMR Cattle Co.	32	McCorkill Family Farms	22
Aufdenberg Polled Herefords	35, 33	McMillen's Toothacre Ranch	33
Bakerville Cattle Co.	31	Menzies Cattle Co.	22
Belzer Farms	34	Missouri Hereford Association	15
Biglieni Farms	32	Neighbors Cattle Co.	20
Blue Ribbon Farms	32	Networth Feeds and Feeding	33
Bonebrake Herefords	Back Cover	Open Range Cattle Co.	9
Bourbeuse Bend Herefords	32	Phillips-Renner Farms	10
Butler Polled Herefords	9, 35	Parker Bros. Polled Herefords	11
Central MO Polled Hereford Breeder's Assoc	13	R&L Polled Herefords	33
Choate Polled Herefords	32	Rapp Premium Genetics	31
College of the Ozarks	18-19	Reed Farms	3
Crutsinger Hereford Farm	10	Reynolds Herefords	31
Day's Family Farm	23	Rocking F Polled Herefords	32
Decker Herefords	31	Roth Hereford Farm	31
Dogwood Farm	33	Shingle Oaks Polled Herefords	33
Duvall Polled Herefords	26	Shoenberger Polled Herefords	33
Falling Timber Farm	7, 35	Show Me Genetic Services	22
Ferguson Polled Herefords	31	Souders Farm	32
Gregory Hereford Ranch	10	Steinbeck Farms	29
Gregory Polled Herefords	22	Thompson Herefords	27
H&H Herefords	31	Tri-L Polled Herefords	30
H&H Show Supply	31	Triple H Acres	20
Holmes Hereford Farm	32	Towner Farm	33
J. D. Bellis Family	6	Townerview Farm Herefords	17
Jordan Herefords	29	Waters Farm	31
Journagan Ranch / Missouri State	3	WMC Cattle Co.	2
Kauffman Hereford Farm	31	WPH Ranch	14

Rhode wins state FFA Division I prepared public speaking

Gavin Rhode of the East Buchanan FFA Chapter placed first in the Division I prepared public speaking leadership development event at the 93rd Missouri FFA Convention. Sixteen students from six districts were selected to compete at the state level. Rhode's FFA advisors are Ronetta Walkup and Chuck Wilson.



MFA Inc. sponsors the competition, which requires contestants to deliver a three- to four-minute speech based on an agriculture topic they have selected and researched. The contestants present their speech in front of a panel of judges and then undergo an additional three minutes of questions. The event helps students to polish logical thinking and verbal skills needed in the classroom.

Washam family welcomes first baby



Cody and Jocelyn Washam, Wentworth, MO, welcomed a daughter, Kyla Jo, on May 29, 2021 at 7:20 p.m. Kyla Jo weighed 6 pounds and 11 ounces and measured 20 inches long.

The family operates Wide Range Bovine Unlimited, LLC, specializing in A.I. and Embryo technologies. They also own with their families Hillside Angus Ranch and Butler Polled Herefords, deeply rooted in the seedstock industry. Cody has been

an independent sales representative for ABS Global since 2008 and Jocelyn has been an integral part of Rural Route Creations, the livestock marketing agency serving as the editor of the Missouri Hereford News.

Kyla Jo is welcomed into this world by two sets of very excited grandparents – Jimmie and Andrea Butler, Republic, MO, and Rick and Mary Jo Washam, Pierce City, MO, as well as uncles, aunts and a cousin.

New Catlett Boy Enters the World

Ben and Devann Gregory-Catlett would like to announce the birth of their son, Boone Gregory Catlett. He was born on June 5, 2021 at 9:42 a.m., weighing 5 pounds and 8 ounces.

Boone is the grandson of Kevin and Barb Gregory, Gregory Polled Herefords of Houstonia, Missouri.

Big Brother Harrison welcomed him home.



BELZER FARMS
Breeding for Excellence
 11870 June Dr • Browning, MO 64630
 Ted Belzer 660-244-3333
 Tony Belzer • 660-734-8006
 April Miller • 816-305-7490
 aprilmillier1732@gmail.com

Hereford and F1 Replacement Heifers for Sale

APH 4356

COLORADO

15G

{DLF,HYF,IEF,MSUDF,MDF}



Reg: 44040662 | DOB: 02/23/2019
HOMO POLLED!!



Sire: R EXCITEMENT 4356 Dam: CPH 10Y WYNNE 14B MGS: NJW 73S W18 HOMETOWN 10Y ET

*Every part of this bull raised by Aufdenberg Polled Herefords is **EXCITING!** Colorado is a true testament to GOOD, both on foot and paper! To prove his phenotype, he has a show record that stands out winning the 2020 Ozark Empire Fair as Grand Champion Bull, American Royal Reserve Champion Yearling Bull and recently named the 2020 Missouri Hereford Association Show Bull of the Year.

*Many people have put eyes on him and the first thing they say is **WOW!** He's unique - a **HOMOZYGOUS POLLED** calving ease bull that has a ton of power and style. Colorado is going to be a breed changer and will make an impact on any herd. Here is your opportunity to place his genetics in yours! Whether you are a purebred seedstock producer or a commercial operation, this bull will work in any scenario. Not many bulls in the breed offer as much breeding versatility as Colorado.

*Top 20% for CE, Top 5% for WW, Top 15% for YW, Top 20% for SC, Top 10% for MARB and Top 10% for CHBS.

SEMEN FOR SALE

\$35/unit • non-certificate • 10 straw minimum

Contact: Darrell Aufdenberg 573-270-6755

APH

Darrell Aufdenberg
13023 Hwy. 61
Jackson, MO 63755
573-270-6755

aufdenbergd@yahoo.com

BUTLER POLLED HEREFORDS

Jimmie, Andrea and Joel Butler
Cody and Jocelyn Washam
4195 South Farm Rd. 53 • Republic, MO 65738
Jimmie 417-838-4095 • Joel 417-838-3665
Cody 417-489-5450

butlerpolledherefords@hotmail.com

FTF Falling Timber Farm

Beef Genetics and Nutrition

Glenn, Yvonne, John & Heidi Ridder
16777 Ridder Road
Marthasville, MO 63357
John Cell 636-358-4161
geridder@centurytel.net

Bonebrake and Guest Annual Production Sale



"242Z" Reg: **43322393**

Sire: **TH 122 711 VICTOR 719T** Owned with Voris Farms
Offering Genesis X 242Z matings in our fall 2021 production sale!



"1665" Reg: **43795313**

Sire: **UPS SENSATION 2296 ET**
Will be offering in our fall 2021 production sale!

COW POWER *for the future*



"6079" Reg: **43686983**

Sire: **TH 71U 17Y MOUNTAINEER 420A**
Offering Genesis X 6079 matings in our fall 2021 production sale!



"7138" Reg: **43784760**

Sire: **R LEADER 6964** Owned with Cody and Jocelyn Washam
Perfecto X 7138 embryos available!

Mark your calendar!

Saturday, October 9, 2021 • Offering 80 lots!

Chappells Sales Arena • Stafford, Missouri

Contact us via email, call/text, or Facebook to request a catalog.



Al Bonebrake

5943 E St. Hwy. YY Springfield, MO
Dr. Al Bonebrake 417-849-1324

James Henderson, Herdsman

417-588-4572 cell
jameswhend@gmail.com