

NOV 2020

MHN

Missouri Hereford News

Official Publication of the Missouri Hereford Association

Hereford Influence

a time-honored tradition

Inside this issue

2021 National Hereford Show Announced
Missouri Hereford Weekend in Sedalia Schedule
John Ranch Utilizes the Black Baldy Female
MU Extension Explains Winter Cattle Management
Preparing for the Holidays

Presorted
First Class
US Postage
PAID
StateGroup

Missouri Hereford News
30487 Hwy J
Wentworth, Missouri 64873



Thank You

to all who attended, bid and purchased in our
2020 LADIES OF THE OZARKS PRODUCTION SALE!

It was a huge success and couldn't have happened without all the humbling support.



**WE INVITE YOU TO BE WITH US AT THE
MISSOURI OPPORTUNITY SALE + DEC 6, 2020**
IN PERSON OR ON WWW.LIVEAUCTIONS.TV



WMC 156T W155 Maggie 38E ET

Reg: 43794857 • Sire: CMR GVP MR MATERNAL 156T
Hard to find Mr Maternal 156T daughter sells!
Lots of freckles, good pigment, great uddered,
and a super calf raiser.



WMC 10E Lady 122H • DOB: 02/29/2020

Reg: 44129992 • Sire: WMC Z210 AUGGIE 10E
This Auggie 10E heifer calf sells!
The Auggie sire group was the most talked about calves
at the Ladies of the Ozarks 2020 sale.



Travis & Sarah McConaughy
Herdsmen: Jett and Watson McConaughy
Wasola, MO
Phone: 417.989.0486 Email: t-mc2009@live.com
Visit us online at www.wmccattleco.com



Reed Farms

Linda and I have decided to offer all of our young cows for sale. There are 20 cows, all bred for spring 2021 calves. Several are bred AI to the top bulls in the breed. All raised on our farm for many generations.



NJW 113D 1010 Tough 126F

P43944381 DLF, HYF, IEF

SIRE: KT BUILT TUFF 1010

DAM: NJW 91H 10W RITA 113D ET

EPD'S: CED 8.2, BW 2.9, WW 64, YW 100, MILK 28, M&G 60, FAT -0.006, REA 0.22 MARB 0.25, BMI 412, BII 504, CHB 112

The first calves are outstanding. Calves come easily and very vigorous at birth. conservative marked, attractive with great profile and structure. Homozygous Polled. He was the high indexing bull calf at NJW on the 2 year old heifers. Several of his daughters are in the 16 heifers we are offering for sale. Owned with LJR/MSU.



WHR Beefmaker 4013 191 311E ET

P43766635 CHB, DLF, HYF, IEF, MSUDF

SIRE: INNISFAIL WHR X651/723 4013 ET

DAM: R MISS REVOLUTION 191

EPD'S: CED 1.8, BW 2.6, WW 62, YW 100, MILK 31, M&G 62, FAT 0.044, REA 0.33, MARB 0.39, BMI 358, BII 454, CHB 130

We are excited with being able to have this outstanding son of 4013 in our pasture. Homozygous Polled, has calving ease, and a great disposition. High marbling bull. Many of the cows we are offering for sale are bred to him. Owned with LJR/MSU.

A Special Thank You to Dan Lacy, Drexel, Mo for purchasing 10 pairs that all traced to his father's favorite OR Dom 549 F243 daughters!

Also offering
all of our 2020
heifer calf crop
of 16. Very special
group.

**REED
FARMS**
Registered Polled
Herefords
Since 1962

Jim and Linda Reed

PO Box 126 • Green Ridge, Mo 65332
660-527-3507 • 417-860-3102

Change – some love it while others cannot stand the thought. Our breed is known for time-honored traditions, yet, when you look at the new memberships, junior programs and list of buyers, it's easy to understand that the Hereford breed is positioned to accept change...in such a good way.

Hereford cattle have long stood the test of time in North America, notably representing the “Western” heritage of the U.S. throughout books, movies, antiques and imagery painted in our minds. This is certainly the case too if you think back over the decades that the National Western Stock Show has been held – you might imagine the belt-buckle cattle in straw up to their bellies. It's the white face that you immediately are drawn to in your mind. It's the tradition in “The Yards” that so many of us get excited to visit Denver each January, ready to soak up the camaraderie and see the exciting new genetics.

This January will look different though. Change is here and has been since our world entered a pandemic of the COVID-19 virus back in March. The Hereford breed has continued to thrive as breeders with determination have carried on traditions of the Junior National Hereford Expo, the American Royal and numerous sales across the country. Oklahoma City invites you to the newest change in January – Cattlemen's Congress, which was recently announced by the American Hereford Association as being recognized as this year's national show. For most of Missouri, we will welcome the close proximity of this event and embrace this change with graciousness that we will be able to carry on with a world-class marketing event.

We hope each of you has a blessed end to 2020, and we hope and pray this next year brings peace, health and success to your families and operations. Be sure to attend the Missouri Hereford weekend in Sedalia, Missouri, the first weekend in December before the busy holiday season begins.

God bless!

– The Editors, *Rural Route Creations*

Cassie Dorran, editor

Jocelyn Washam, editor



This newsletter is edited by
Rural Route Creations
 30487 Hwy J • Wentworth, MO 64873
www.ruralroute creations.com

2021 Publication Dates

Issue	Ad Space & Material Deadline	Camera Ready-Ad Submission
March 1	Jan 18	Jan 22
July 15	June 1	June 4
September 1	Aug 2	Aug 6
November 1	Sept 20	Sept 24

“...the *Hereford breed* is positioned to accept change...in such a good way.”



Advertisement & News Submissions:

Cassie Dorran 403-507-5953 cassie@ruralroute creations.com
 Jocelyn Washam 417-838-5546 jocelyn@ruralroute creations.com

Rural Route
 CREATIONS

Advertising Rates:

Advertising rates include design at no extra cost! Two design proofs will be provided by email with each advertisement purchase. If additional changes or inclusions need to be made after the second proof, the advertiser will be billed at \$50 per hour.

All contracted ads are for the current calendar year.

Ad Type	Cost Per Issue	4X Contract Price
Full page color ad	\$300	\$1100
Double Page Spread	\$500	\$1800
Half page color ad	\$200	\$700
Quarter page color ad	\$100	\$350
Business card color ad	(contracted only)	\$200

All ads must be received by deadline!

View the Media Guide Online at moherefords.org for ad sizes, file requirements and material submission.



IN THIS *Issue*

- 4 | Words from the Editors
- 4 | Publication Dates and Advertising Rates
- 5 | Missouri Hereford Association Officers
- 8 | State Association Update
- 10 | News from the American Hereford Association
- 12 | Women Association Update and Scholarships
- 12 | The Ranch Kitchen Recipe
- 14 | Junior Association Update
- 14 | Junior Association Note from the Advisors
- 19 | State Advertising Opportunities
- 25 | MHA Website Classifieds Page
- 26 | MHA Virtual Field Day
- 30 | MHA Facebook Page
- 30 | Association & Industry Events & Deadlines
- 31 | Preparing for the Holiday Season
- 32 | Sale Results
- 38 | Advertising Index

10 Cattlemen's *Classic*
Announcement of 2021 National Hereford Show

22-23 *Baldy Females* Excel
A look into John Ranch & Mike John's international experiences

28-29 *Cattle* Management
MU Extension workshop summary in preparing for winter



22-23



28-29

Missouri Hereford Association

Officers and Directors

www.moherfords.org

<i>President</i>	Amy Phillips	Richmond	District 1
<i>Vice President</i>	Travis McConaughy	Wasola	District 8
<i>Secretary / Treasurer</i>	Matt Reynolds	Huntsville	
<i>Directors</i>	Brian Littleton	Keytesville	District 2
	Mary Beth Ray	Paris	District 3
	Eddie Roth	Windsor	District 4
	Mark Abramovitz	Columbia	District 5
	Rick Steinbeck	Hermann	District 6
	Mike McCorkill	Greenfield	District 7
	Darrell Aufdenberg	Jackson	District 9



To download a Missouri Hereford Association membership application and to view most current events, applications and announcements, visit the Missouri Hereford Association website at www.moherfords.org

Missouri Hereford Association
Matt Reynolds,
Secretary/Treasurer
1071 C.R. 1231
Huntsville, Missouri 65249
660-676-3788

R EXCITEMENT 4356 {DLF,HYF,IEF,MSUDF}



Semen: \$25/straw
Non-certificate

Contact: Either Owner

*CALVING EASE - Specialist with great pigment and top end performance.

*Used in 51 different operations from 14 states.

*Short gestational length.

*Trait leader for 10 EPDs.

Reg. No. P43711600 Calved: 3/19/2016 • Tattoo: RE 4356

SHF YORK 19H Y02 (CHB)(DLF,HYF,IEF)

R NEW YORK 5083 (CHB)(DLF,HYF,IEF,MSUDF)

P43399385

R MISS PUCKSTER 971 (DOD)(DLF,HYF,IEF,MSUDF)

HYALITE ON TARGET 936 (SOD)(CHB)(DLF,HYF,IEF,MSUDC)

R MISS ON TARGET 384 (DLF,HYF,IEF,MSUDC)

P43499703

R MISS FELT 1479



2020 Ozark Empire Fair
Grand Champion Hereford Bull
Excitement son raised by
Aufdenberg Polled Herefords and
owned with Butler Polled Herefords

	Calv. Ease Direct (%)	Birth Wt.	Weaning Wt.	Yearling Wt.	Dry Matter Intake	Scrotal Circ.	Sustained Cow Fertility	Milk & Growth	Calv. Ease Mat. (%)	Mature Cow Weight	Udder Suspension	Test Size	Carc Wt.	Fat	Rib Eye Area	Marbling	BMI Index (\$)	BII Index (\$)	CHB Index (\$)
EPD	+5.0	+0.6	+79	+107	+0.9	+0.9	+20.6	+28	+1.3	+128	+1.20	+1.20	+75	+0.024	+0.27	+0.23	+\$412	+\$519	+\$93
Acc	.52	.81	.70	.69	.20	.49	.30	.25	.37	.40	.51	.51	.27	.34	.26	.27	-	-	-

BRP DOSS APH 24E STONEWALL 957

Reg: P44108538 • Calved: 02/18/2019 • Tattoo: 957

SHF YORK 19H Y02 (CHB,SOD,DLF,HYF,IEF)

S CORNWALL Y02 24E (CHB,DLF,HYF,IEF)

S JANE 936 55C (DLF,HYF,IEF,MSUDF)

RV 9021W OUTLIER 4921 (CHB,DLF,HYF,IEF)

BRP MARIAH 733 (DLF,HYF,IEF)

BRP MARIAH 085 (DOD,DLF,HYF,IEF,MSUDF)



	Calv. Ease Direct (%)	Birth Wt.	Weaning Wt.	Yearling Wt.	Dry Matter Intake	Scrotal Circ.	Sustained Cow Fertility	Milk & Growth	Calv. Ease Mat. (%)	Mature Cow Weight	Udder Suspension	Test Size	Carc Wt.	Fat	Rib Eye Area	Marbling	BMI Index (\$)	BII Index (\$)	CHB Index (\$)
EPD	+3.1	+3.6	+72	+106	+0.8	+1.1	+20.2	+25	+3.2	+119	+1.20	+1.30	+105	+0.074	+0.84	+0.28	+\$450	+\$551	+\$138
Acc	.35	.45	.38	.39	.21	.34	.23	.22	.21	.17	.34	.34	.19	.24	.19	.20	-	-	-

**Doss
Hereford
Farms**

Gary and Debbie Doss
6200 N.E. 142nd St. | Smithville, MO 64089
816-699-8831 | DHF6200@aol.com
www.dossherefordfarms.com

APH
Aufdenberg Polled Herefords

Darrell Aufdenberg
13023 Hwy. 61 • Jackson, MO 63755
573-270-6755
aufdenbergd@yahoo.com

FTF

Sale Consignment Opportunities

FTF POWERHOUSE 920G



Herefords in Native America

November 16th, 2020

Marietta, OK

SELLING 3 BULLS & 2 BRED HEIFERS

FTF SONNET 2208Z



Missouri Opportunity Sale

December 6th, 2020

Sedalia, MO

SELLING RIGHT TO FLUSH

ANY SPRING CALVING COW IN THE HERD

5 YEARS OLD OR OLDER

FTF MS FRONTIER 910G



National Hereford Sale

January 9th, 2021

Oklahoma City, OK

SELLING PICK

OF OUR TOP 40 SPRING BRED HEIFERS



Falling Timber Farm
Beef Genetics & Nutrition

FTF

Glenn & Yvonne Ridder
John, Heidi, Madi, & Ben Ridder 636-358-4161
16789 Ridder Road, Marthasville, MO 63357

www.fallingtimberfarm.com

Find us on Facebook:
Falling Timber Farm



Update

Greetings fellow Hereford breeders and Hereford enthusiasts! I hope this issue of the Missouri Hereford News finds you in good health and morale. As I am writing this it is hard to believe that it is already well into October, and by time this reaches you it will be November.



Amy Phillips
Missouri Hereford Association
President

This year's Missouri Hereford Association (MHA) Field Day was held virtually through Zoom meetings due to the coronavirus. Breeder and business highlights were also posted on the MHA Facebook page. There was lots of good information in these meetings for breeders and lots of activities for the juniors. Thank you, Mary Beth Ray and Jocelyn Washam for your hard work in putting this together. Also, a big thank you to the sponsors for making this happen!

Amid the virus and election ruckus, the fall sale season has gotten off to a good start. Both WMC Cattle Co. and Journagan Ranch/Missouri State University (LJR/MSU) had great sales, and I hope the run continues on for everyone. Your MHA board met after the LJR/MSU sale on October 3 and had a good, productive meeting. Rural Route Creations will continue to produce the Missouri Hereford News and bring you a premium publication as they have in the past. We commend them for their hard work and dedication in promoting our breed, members and association. Also, Creative Services will again be publishing the directory. I would like to thank everyone who participated in interviews.

The MHA Annual Meeting and Awards Banquet is set for Saturday, Dec. 5, 2020 at the Missouri State Fairgrounds, Sedalia, Mo. The annual meeting starts at 5 p.m. with the banquet following at 6 p.m. We are monitoring the virus situation. Watch the website and MHA Facebook page for any updates and/or changes. The juniors are also planning on having a meeting this weekend. Be sure

to check the Missouri Junior Hereford Association Facebook page for details.

The Missouri Opportunity Sale will be held on Sunday, December 6, also at the Missouri State Fairgrounds and will start at Noon. Be sure to attend to view a great set of cattle and support your state breeders. Don't forget this year is a directory year. This is a great way to promote your operation. Creative Services does a great job and as an added bonus will be linking the directory to the American Hereford Association (AHA) website.

The association will again be giving added premiums to the Missouri State Fair Hereford Steer Show. (Don't forget to support it at the banquet!) Juniors, get you a steer and get involved! Spread the word to your local 4-H and FFA chapters about these added premiums. Feeding and showing a steer is a great learning experience and a great way to get youth involved with our breed.

Remember, to be eligible for these added awards the steers must be bred, born and raised in Missouri. They must be registered with the AHA and DNA tested for parentage verification prior to the show with paperwork in hand. For the complete set of rules, go to www.mostatetfair.com and go to 4-H/FFA Livestock section in the Premium Guide. You will find the rules under the 4-H and FFA Beef Specials section.


As time keeps trucking by and the leaves change and fall, it reminds me of life and how it passes by and continually changes whether you are ready for it or not. A special friend once told me,

"Sometimes we get so wrapped up in what we are doing and where we are going that we are blind to what is right in front of us."

"Don't forget to stop and smell the roses." Sometimes we get so wrapped up in what we are doing and where we are going that we are blind to what is right in front of us. Be sure to spend some time with friends and loved ones. Take a few moments from your busy schedule to drop in and visit an old friend; you'll be glad you did. In closing, (I know it's a little early, but...) I hope you have a Merry Christmas and a Happy New Year! Hope to see you all in December for Hereford weekend in Sedalia. Be safe, and don't forget to stop and smell the roses!

God Bless You and God Bless the USA!

Amy Phillips, MHA President



GREGORY

POLLED HEREFORDS

Since 1932

Kevin & Barbara Gregory
 19469 Houston Road
 Houstonia, MO 65333
 660-568-3582 660-620-3585
gphfhereford@gmail.com

Visit Gregory Polled Herefords on Facebook 

THE OPPORTUNITY

to purchase some powerhouse genetics

Missouri Opportunity Sale • Sunday, December 6, 2020 • Sedalia, MO

Show Potential | Outcross Pedigrees | Maternal Cow Power



Reg: **44112981** DOB: 02/07/2020
Sire: **R EXCITEMENT 4356**
Dam: **DFF 1512 ELLEN 702**



Reg: **44112985** DOB: 02/08/2020
Sire: **APH 743 JUSTIN TIME 1Y**
Dam: **DFF 2U DAELYN 609**



Reg: **44112992** DOB: 02/10/2020
Sire: **HILLS-GALORE 44Z RESOLUTE 128D**
Dam: **DFF 1Y ANNA 308 (DOD)**



Reg: **44004211** DOB: 02/13/2019
Sire: **FTF PRIME PRODUCT 226Z**
Safe AI bred 4-4-20 to CL RR KJ 364C Jalapeno 973E



Day's Family Farm

Larry and Pam Day

12139 Hwy 135 • Pilot Grove MO 65276

660-834-4678 home 660-621-0812 cell

ljd@iland.net

www.daysfamilyfarm.com



OKC Cattlemen's Congress

Due to the recent cancellation of the 2021 National Western Stock Show, the American Hereford Association (AHA) board of directors recently voted to recognize the 2021 Cattlemen's Congress, Oklahoma City, Okla., to be held Jan. 4-17, 2021, as a National Hereford Show.

This is the tentative schedule for the show and sale:

Junior Heifer Show Jan. 7, 2021

National Bull Show Jan. 8, 2021

Pen Show Jan. 9, 2021

National Sale Jan. 9, 2021

National Heifer Show Jan. 10, 2021

The AHA will release additional information concerning entry deadlines, arrival, hotel accommodations, show and sale information as it becomes available. This information will be available on the AHA social media outlets and www.hereford.org.

The AHA looks forward to seeing our Hereford family and friends in Oklahoma City in January.

NOW IS THE TIME TO MAKE YOUR PRECONDITIONING PLANS!

NJHA Fed Steer Shootout & Hereford Feedout Program

Preconditioning Protocol Dates*

Pre-weaning
Vaccinations:
October 15

Weaning:
November 1

Booster
Vaccinations:
November 15

Delivery:
December 15

*This is a suggested protocol for those producers who do not currently have a program in place. Regardless of the protocol, cattle must be given 2 rounds of modified live vaccinations prior to delivery.



Awaiting fall calving around Tri-L!

Congrats to Airman Conner Bolch

who is heading to duty in Southern California in December!

Tri-L Polled Herefords

Jack and Alicia Lewis • Katherine Fuller • Conner Bolch

19417 NE 178th Street • Holt, Missouri 64048

816-628-5571 Home • 816-421-4075 Business

816-797-8020 Cell

*Three Generations of
Family, Herefords, & History*

CRUTSINGER HEREFORD FARM

Registered Herefords • Whitewater, Missouri

Larry, Angie, Morgan & Lauren Crutsinger

Larry Cell 573-979-9022 Angie Cell 573-979-1706



MHA

*Mo Hereford Association
Opportunity Sale*

December 6, 2020

Missouri State Fairgrounds • Sedalia, Missouri • Noon

Saturday, December 5, 2020 • Annual Meeting @ 5:00 & Banquet @ 6:00



SELLING CHOICE OF TWO HEIFERS OUT OF A PEN OF THREE • THIS HEIFER IS A FEB. 7, 2020 DAUGHTER OF R EXCITEMENT 4356



44022597

SPRING BRED R LEADER DAUGHTER
BRED TO AH JDH MUNSON 15E



44022443

SPRING BRED REVOLUTION
GRANDDAUGHTER OUT OF A CRACKER
JACK DAUGHTER



44178231

FALL YEARLING HEIFER Sired BY
MOHHICAN THM EXCEDE Z426
BREEDING INFORMATION SALE DAY



44035524

STRONG AGED HERD BULL PROSPECT
Sired BY FTF PORTERHOUSE 455B OUT
OF A CHISM DAUGHTER



44129992

FEB. 29, 2020 SHOW HEIFER PROSPECT
Sired BY AUGGIE • SUPER SLICK LOOK
THAT WILL CATCH YOUR EYE SALE DAY

— SELLING 60 LOTS —

**HERD BULL PROSPECTS • SHOW HEIFER
PROSPECTS • FALL YEARLING HEIFERS • SPRING
BRED HEIFERS • SPRING PAIR SPLITS • FALL CALV-
ING PAIRS • RIGHTS TO FLUSH • EMBRYO PACKAGES**

For more information, please contact

Matt Reynolds • Secretary/Treasurer • Huntsville, MO
reynoldscattle@cvalley.net • 660.676.3788

WWW.MOHEREFORDS.ORG

**AUCTIONEER
CODY LOWDERMAN
309.313.2171**

**JOE RICKABAUGH
AMERICAN HEREFORD ASSOC.
785.633.3188**

**JIM REED • 417.860.3102
DON BIRK • 417.860.8595**

Watch or Bid Online
LiveAuctions.TV

Update

Hope everyone is having a good fall and enjoying the fall-like temperatures and Hereford cattle sales.

We will be holding our meeting Sunday morning before the Missouri Hereford Opportunity Sale, which will be Sunday, Dec. 6, 2020 at 10 a.m at the Sale Arena.

At this meeting we will be having an election of officers. We are currently seeking nominations of officers. Please reach out to our current officers if you are interested in holding an office for the Hereford Women of Missouri. We are also asking for anyone who would like to volunteer to be in charge of the table decorations for the banquet on Saturday night. Please reach out to any of the officers if you are interested in volunteering.

Please watch our Facebook page for information regarding the social hour the Hereford Women of Missouri sponsor prior to annual meeting.

We have received the cookbooks. They are currently for sale. These would make a great Christmas present, shower or wedding gift. We will have them at the Banquet/Opportunity Sale and selling them for \$15. If anyone would like one mailed to them, please contact Tonya Bagnell at Tbagnell6452@gmail.com. Shipping will be \$5.

Hope to see everyone at the December Hereford weekend in Sedalia.

Please have a fun, and safe harvest and fall.

Tonya Bagnell, Hereford Women of Missouri Secretary

Hereford Women of Missouri Cookbooks For Sale!

\$15 + \$5 shipping if needed

Pick yours up during the Missouri Hereford weekend!



Find us on 

Hereford Women of Missouri Officers

President – Katherine Fuller
816-547-1545
Katfuller1@aol.com

Vice President – April Miller
816-305-7490
Aprilmiller1732@gmail.com

Secretary – Tonya Bagnell
660-631-2109
Tbagnell6452@gmail.com

Treasurer – Marijane Miller
317-341-3846
millerherefords@yahoo.com

Mail \$15 Hereford Women of Missouri dues to
20500 Sioux Drive,
Lebanon, MO 65536

Queen Co-chairs –
Shelby Bagnell
660-630-3361
Shelby.bagnell@hughes.net

Anna Roth
573-579-7424
anna.roth15@gmail.com



Two Mom's Pimento Cheese

Pimento Cheese is a southern favorite! Serve it as the filling for a sandwich, as a spread for crackers or even top off a tomato pie and allow the cheesy goodness to melt on top. However you serve it up, it's always a hit. Our favorite way is simply on top of celery sticks as an appetizer at Thanksgiving and Christmas just like my Granny used to serve. As a small girl, this was my job at her house as a way to have me help with the holiday meal. Now it's my mom's tradition to have the grandgirls make her Pimento Cheese Spread. These 'two moms' have sure made an impact in my life and many others.

Ingredients

- 2 pounds of Sharp Cheddar Cheese, grated by hand
- 1 large jar of Pimento's, 4 ounce size or 2 - 2 ounce size, drained well and chopped fine
- 3 heaping tablespoons of Real Mayonnaise
- Salt and pepper to taste

Instructions

1. Grate cheddar cheese by hand on a grater. You can use an electric grater, but I find the traditional graters work better for this recipe and allow shorter shreds of cheese.
2. Add to sharp cheddar cheese the 3 tablespoons of Real Mayonnaise then drained and chopped pimentos and blend well. Do not use Miracle Whip as this will make the spread sweet in taste.
3. Add salt and pepper to taste to your liking.
4. Serve in between two slices of wheat or white bread or use a spread for crackers.

Cook's Note: This spread is wonderful spread down the inside curve of 3 inch sticks of celery. These ingredients are not set in stone. We've used cooked sausage and ground beef for meat on this pizza.

Special thanks to my Granny and my mom Virginia for this recipe and memory. My best memories are from cooking with them both.

The Ranch Kitchen Original Recipe - Alise Nolan | theranchkitchen.com

COW POWER *for the future*



"2422" Reg: 43322393
Sire: TH 122 71I VICTOR 719T Owned with Voris Farms



"1250" Reg: 43338265
Sire: H H PERFECT TIMING 0150 ET



"1665" Reg: 43795313
Sire: UPS SENSATION 2296 ET



"1623" Reg: 43695764
Sire: GV CMR X161 TIMES UP A152



"7138" Reg: 43784760
Sire: R LEADER 6964



"6079" Reg: 43686983
Sire: TH 71U 17Y MOUNTAINEER 420A

BONEBRAKE
REGISTERED
HEREFORDS
EST. 1936

M.D. and Al Bonebrake
5943 E St. Hwy. YY Springfield, MO 65802
Dr. Al Bonebrake 417-849-1324

James Henderson, Herdsman
417-588-4572 cell
jameswhend@gmail.com

Thank You

to all the bidders and
buyers from our Fall 2020
Production Sale! We appreciate
your support and your friendship!

Happy fall everyone!

I hope everyone is doing well with the new school year getting started back up. The Missouri Hereford Field Day was held virtually this year, and with that, exciting new contests were added for juniors. Thank you to everyone who participated, and congratulations to all the winners!

The Missouri Opportunity sale and banquet will be held December 5-6 in Sedalia. There will be a junior meeting December 6 before the sale. All juniors attending are asked to bring a dessert donation and to help with concessions on sale day. It's an exciting weekend to look forward to!

I am looking forward to seeing everyone at the fall sales and shows, and wishing everyone a Happy Thanksgiving!

Kinleigh Bolin, Missouri Junior Hereford Association Reporter

President – Haleigh Ferguson

Vice President – Isaac Rhode

Secretary – Tory Miller

Treasurer – Taylor Miller

*Mail \$15 Missouri Junior Hereford Association dues to
20500 Sioux Drive, Lebanon, MO 65536*

Reporter – Kinleigh Bolin

Fundraising Chair – Aiden Kleinman

Directors – Will Hendricks, Phillip Mueller, Gavin Rhode

Advisors –

Jeff & Susan Rhode

7765 NW Hwy NN, Stewartsville, MO 64490

816-261-4819 Jeff Cell or 816-261-4821 Susan Cell

Susan.rhode@yahoo.com

Brad & Shannon Mueller

2045 PCR 520, Perryville, MO 63775

573-517-2999 • Muellers29@yahoo.com

Eddie & Mary Roth

1178 NE Hwy J, Windsor, MO 65360

660-351-4126 • rothconcrete3@gmail.com

MEMBERSHIP DUES

\$15 • DUE BY APRIL 1



MENZIES CATTLE CO.
Josh & Mindy Menzies
5667 State Hwy. 38
Marshfield, MO 65706
417.425.5659
jmenzies79@gmail.com

See you at Missouri Hereford Weekend!

See You in December!

Missouri Junior Hereford families should plan to join us for Missouri Hereford weekend December 5-6 in Sedalia for the Missouri Hereford Association (MHA) annual meeting and banquet, as well as the 2020 Missouri Opportunity Sale. The Missouri Junior Hereford Association (MJHA) will meet on Sunday, Dec. 6, at 9:30 a.m. in the sale arena. We encourage all juniors and families to attend, so that we can take care of business and get a head start on planning for 2021. Please put these dates on your calendar, and join us!

One of the things on the agenda for the meeting is preparation for contests in which our Missouri juniors plan to participate at the Junior National Hereford Expo (JNHE), set for July 3-9 in Madison, Wis. These contests provide valuable opportunities for our kids to not only learn

something about the Hereford breed, but also to develop leadership skills that will benefit them for life. Contests are available for all age groups and include Hereford Bowl, team sales, Certified Hereford Beef Grill Off, team fitting, illustrated public speaking, photography and poster contests, plus much more. There is truly something for everyone and lots of options for how to participate.

Also, a reminder that MJHA dues for 2021 can be paid starting in December and must be paid by April 1, 2021 in order to be eligible for MJHA awards. Dues are \$15 per member and should be submitted to Taylor Miller, MJHA treasurer.

See you in Sedalia!

Jeff and Susan Rhode, Missouri Junior Hereford Association Advisors

In an Industry evolving at rapid pace... One thing remains the same... THE POWER IS IN THE COW



CMF 341E GRIDMAKER 501G

44107992 / Homozygous Polled
Sire: KCF BENNETT NOBLE D367 / Dam: CMF 9A SARA 341E

CED	BW	WW	YW	DMI	SC	SCF	MILK	M&G	CEM	MCW
+8.9	+1.4	+69	+111	+0.6	+1.5	+15.9	+30	+65	+7.1	+79
UDDER	TEAT	CW	FAT	REA	MARB	BMI	BII	CHB		
+1.50	+1.50	+85	+0.043	+0.81	+0.22	+\$ 367	+\$ 457	+\$ 124		

- ★ This UNIQUE Herd Bull prospect is the ONLY Bull in the breed with his combined CED, BW, WW, YW, Ribeye, and Marbling. GRIDMAKER is HOMOZYGOUS POLLED with an OUTCROSS PEDIGREE.



CMF 369E GUNTOWN 530G

44108422 / Homozygous Polled
Sire: KCF BENNETT HOMEWARD C776 / Dam: CMF 3005 RACHEL 369E ET

CED	BW	WW	YW	DMI	SC	SCF	MILK	M&G	CEM	MCW
+2.0	+3.2	+78	+126	+1.1	+1.0	+18.5	+28	+67	+3.5	+103
UDDER	TEAT	CW	FAT	REA	MARB	BMI	BII	CHB		
+1.30	+1.30	+89	+0.043	+0.65	+0.25	+\$ 400	+\$ 504	+\$ 119		

- ★ HOMOZYGOUS POLLED with SCALE CRUSHING Performance. 940 lb. adjusted weaning weight from his 2-year-old dam. Top 1% of the breed for WW and YW. GUNTOWN is good looking & powerful with a pedigree blended for MATERNAL COW POWER.



CMF 1756 GUIDELINE 535G

44089325 / Homozygous Polled
Sire: R LANDMARK 4386 / Dam: L III TFL C609 1756

CED	BW	WW	YW	DMI	SC	SCF	MILK	M&G	CEM	MCW
+13.2	+1.5	+64	+107	+0.8	+1.7	+22.7	+31	+62	+6.2	+94
UDDER	TEAT	CW	FAT	REA	MARB	BMI	BII	CHB		
+1.30	+1.30	+67	+0.073	+0.54	+0.60	+\$ 459	+\$ 576	+\$ 97		

- ★ The ONLY animal in the AHA Database with his RARE combination of CED, YW, Ribeye, and Marbling. GUIDELINE is HOMOZYGOUS POLLED and he scanned a 16.10' Ribeye for an ASTOUNDING 1.59 square in. per 100 weight.

The Cowman's Kind XXIV BULL & FEMALE SALE MARCH 27, 2021

Saturday • Noon (CDT)
At the Farm • Lexington, TN
Angus • Hereford • Charolais

Auctioneer: Eddie Burks TFL # 4123, TAL # 4990

To request a sale book, contact:

Sims Plus LLC
Mark Sims
(580) 595-0901
www.simsplusllc.com

EPDs as of 10/3/20



Rob Helms (731) 571-8213
Heath Helms (731) 614-3979
Steve or Hayden Helms (731) 968-2012
Email: candymeadowfarms@hotmail.com

565 CANDY MEADOW FARM ROAD • LEXINGTON, TENNESSEE 38351

"A Tradition That Works"

Selling in the Missouri Opportunity Sale - December 6, 2020 - Sedalia, MO



Reg: 43959774 • DOB: 10-22-18
Sire: COFO P51 HOUDINI GAINER D740

She has a big-boned bull calf sired by BEHM 100W CUDA 504C 43636764. He shows frame and muscle at an early stage. It will be a great opportunity to watch this calf mature.



Reg: 44068681 • DOB: 9-22-19
Sire: RF 60T STAY WITH ME 57E

Our students are the backbone of our operation and we strive to raise breeding stock that are going to work hard to make producers money!

College of the Ozarks
Point Lookout, Missouri
Tammy Holder (417) 342-0871



Selling

DECEMBER 6, 2020 • NOON

Missouri Opportunity Sale • Sedalia, Missouri



TAF LEADER DORI 012G
AI BRED TO AH JDH MUNSON 15E ET ON 5/16/20



TAF 33Z STELLA 013G
AI BRED TO C&L RR KJ 364C JALAPENO 973E ON 5/15/20

TRIPLE A FARM

Eric, Pamela, Will, and Ruth Adkins
Columbia, Missouri
573.819.8585 • ericadkins05@gmail.com

ROTH HEREFORD FARM - COMPLETE DISPERSAL

Saturday, November 21, 2020 • 11:30 a.m.

Roth Hereford Farm • Windsor, MO

THEY ALL SELL! | *Herd Bulls, Pairs, Bred and Open Heifers, Embryos and Semen*



0013H | P44151092 | 01/15/2020
Sire: R Leader 6964



0031H | P44166061 | 02/12/2020
Sire: NJW 76S 27A LONG RANGE 203D ET



0033H | P44151298 | 02/14/2020
Sire: R Leader 6964



6065D | P43771092 | 03/18/2016
Sire: MSU TCF Revolution 4R



8142F | P44060417 | 10/26/2018
Sire: MHPH 521X Action 106A



9094G | P44145168 | 10/05/2019
Sire: MPH Z311 Rampage D1



ROTH HEREFORD FARM

11466 NE Hwy J • Windsor, MO 65360

Carol Roth

660-694-2569 • Cell 660-351-4072

croth745@earthlink.net

Eddie, Mary, Lane & Levi

Cell 660-351-4126

Amy Phillips

Cell 816-878-7305

nothead1@aol.com

For Sale catalog contact: Dale Stith, Auctioneer/Sale Manager | 918-760-1550 | dalestith@yahoo.com



Put some
CONFIDENCE
in your herd

FTF CONFIDENCE 6113D

Reg: 43751234 Polled

DOB: 09/08/2016

CE 4.0 BW 0.8 WW 74 YW 118 SC 1.3 Milk 35

M&G 72 CEM 3.2 MCW 108 Teat 1.5 CW 71

Fat 0.054 REA 0.31 Marb 0.16 CHB \$96

**Owned with
Falling Timber Farm**

Semen: \$25/straw, \$50 certificate

STEINBECK FARMS

**Rick and Laurie Steinbeck
Hermann, MO**

573-680-0954 cell 573-237-2668 home

HUTH PROSPECTOR K085
FTF PROSPECTOR 145Y
FTF CHICK A BOOM 7227T

TH 122 711 VICTOR 719T
FTF VERONICA 4107B (DOD)
FTF MS REVOLUTION 2424Z (DOD)

RRH MR FELT 3008
HUTH 34A PAULA 68F (DOD)
FTF BOMBARDIER 309N
FTF LEANNA 480P
DRF JWR PRINCE VICTOR 711
KBCR 19D DOMINETTE 122
MSU TCF REVOLUTION 4R
JR MISS RIGHT 950J (DOD)

Maternal Integrity Selling Dec. 6, 2020 • MO Opportunity Sale



ACES MISS REVOLUTION 901B Reg: P43536424

Sire: **MSU TCF REVOLUTION 4R**

Cow was purchased in earlier Missouri Opportunity Sale and has been a great asset to our herd. A daughter is our best two-year-old and not leaving the place. A yearling heifer was chosen by Ken Teague for his new herd. She has another fancy heifer by side this year.



TAR 96C EXTRA REVA 41H

Reg: P44184441 DOB: 09/15/2020

Sire: GKB 9279 EXTRA DEEP 96C ET

McMillen's Toothacre Ranch

Trent & Mary McMillen Family • Walnut Grove, MO

5inthehive@gmail.com 417-830-7257 cell



Missouri Hereford News

At the banquet in December, prime pages of the MHN including the inside front cover, page 1, center spread left, center spread right, inside back cover and back cover will be auctioned off. The highest bidder will then invest this premium plus the contracted 4-issue full page price for the year. All other advertisement pages are placed on a first-come, first-serve basis.

The 2021 Missouri Hereford News (MHN) Media Guide will be released December 5 in Sedalia, Mo., at the Missouri Hereford Association (MHA) annual meeting and banquet. Watch your email for the media guide to be posted to the Missouri Hereford Association (MHA) website also. The guide will contain the publication schedule, advertising rates and ad sizes. January 18 is the deadline to receive the contracted 4-issue rate for the new year as well as the date to book ad space for the March 2021 issue. Take advantage of the contract discounts by booking early!

In 2020, over 100 advertisers chose the publication as a marketing venue and an 150 extra copies have been printed for each issue allowing copies of the MHN to be handed out at numerous Missouri events and national Hereford sales and shows. The dispersal of these extra copies has increased the readership and visibility on a national level. If you have a location in mind in your area to further help place the publication, please let the editors know, and extra copies will be shared.

To help make the Missouri Hereford News as informative as possible and highlight our members, we welcome all results, events, and membership news submissions to the editors for inclusion in the publication!

March 2021 Upcoming Deadlines

January 18 - contracted 4-issue rate & ad material submission deadline

January 22 - Camera-ready ad submission deadline



Advertise on the web!



Missouri Hereford Website

Since the new, mobile-friendly website launch in March 2017, there have been 36,056 website views to date. On average, the website has 23 visits a day with peaks at certain times when RRC sends out eblasts to the MHA membership and pushes notifications on the RRC Facebook in regards to the MHA and MHN.

The **homepage banner ad** will also be auctioned off at the Missouri Hereford banquet with the winning bidder receiving this advertisement space for the 2021 year. Other advertisements will be sold at a first-come, first-serve basis, so be sure to contact **Jocelyn Washam** to reserve your space, as these fill up fast. Promote your operation with a great presence on the web!

2020: WHAT A YEAR... in so many ways!



Congrats to the Adam Family
Grand Champion FFA Hereford Heifer
2020 Missouri State Fair
Sold in our 2019 Maternal Excellence Online Sale



Congrats to the Schiereck Family
Grand Champion FFA Hereford Steer
2020 Missouri State Fair Junior Steer Show

Bulls For Sale!

Horned and Polled Genetics Available!

Open Range Cattle Co.

Kristin Allen | Rogers, AR
816-729-6305
ksamizzou@yahoo.com

THANK YOU TO ALL OUR CUSTOMERS AND FRIENDS FOR
YOUR SUPPORT AND TRUST IN OUR PROGRAM!



Congrats to the Dunn Family
Reserve Grand Champion Hereford Heifer
2020 Ozark Empire Fair Junior Hereford Show
Sold in our 2019 Maternal Excellence Online Sale



Congrats to the Hardy Family
Grand Champion Hereford Heifer
2020 Ozark Empire Fair Open Hereford Show

Mark your calendar!

Maternal
EXCELLENCE

ONLINE HEREFORD SALE
APRIL 2020

Offering our very best fall born heifers!

BUTLER POLLED HEREFORDS

Jimmie, Andrea & Joel Butler

Cody & Jocelyn Washam

Republic, Missouri

417-838-4095 **Jimmie**

417-838-3665 **Joel**

417-489-5450 **Cody**

jocelyn.washam@hotmail.com



Follow us on Facebook!
Butler Polled Herefords

Baldy Females Excel for John Ranch

John Ranch is the result of many generations of Johns raising commercial cattle. Mike John is the third-generation owner and operator of John Ranch. John graduated Kansas State University (KSU) before taking over the ranch from his father. With his wife Dara by his side for 36 years, they have three children and six grandchildren.

John has had tremendous exposure to the beef industry both on a domestic and international capacity. He humbly mentioned his involvement as President of the Missouri Cattlemen's Associations, President of the National Cattlemen's Beef Association (NCBA) in 2006, Chair of the Missouri Beef Council, and his position on the Meat Export Federation Board. He explained that his time as president with the NCBA allowed him numerous great experiences, traveling 200 days that year.

When asked about his best memory in the beef industry, John explained, "I got to meet President Bush on four different occasions."

There were several experiences he can hardly describe because they had such significance.

"I also personally asked the Prime Minister of Japan to re-open their border to U.S. beef after BSE," John said. "It was just the coolest thing in the world."

Originating in Huntsville, Missouri, John Ranch grew out of Hobby Hill farm started by John's grandfather in the 40s, and then John Ranch incorporated in the 70s when the transition was made to John's father as operator. John expressed that farming has always been a part of his family, as his mother's parents started the town of Huntsville where both sides of the family still own farms. John's father was a nutritionist for Farmland Industries and Farnam Companies then continued to run John Ranch with 400 cows in the 80s. In 1988, John moved back to Huntsville full time and became the main operator of John Ranch.

John was the only labor for years, but when he started working for the MFA Incorporated (MFA) in 2000, he then hired Matt Reynolds to become the manager of the cows and land at John Ranch.

John is the director of health track operations at MFA, with direct supervision of the Health Track Program, which is a preconditioning verification program for cow-calf producers commonly referred to as Vac 45. The MFA Health Track has many benefits to enrolling such as data and health management as well as knowledge about net return per cow. John recommends Health Track calves because of the reduction of disease in feed yards, minimum of 45 days weaning at the place of origin, two vaccinations required, and the absence of horns.

John also has been working with BlockTrust, a blockchain program, suggesting it is a great solution for moving value-based data all the way through the supply chain.

"This source of two-way communication is great for cow-calf producers, but it also allows people down the supply chain who want information pertaining to feed performance or carcass data, which can be communicated back to the producers," he explains.

John's daughter is an attorney and married into the feeder business, where with her husband, they run lots of cows, three kids and a commercial feedlot. This is a great scenario for John Ranch both in things to visit about around the holidays but also through cow partnerships and the sharing of genetics and feeding data.

Herefords have always been around at John Ranch. John believes that black baldies are extremely efficient reproductively and express that hybrids work well in their environment. John is pleased with the genetic combination he has seen on the ranch. John made the decision to build some black baldy female embryos by using sexed Hereford semen, what John believes is the best scenario in making replacement females.

At John Ranch, they have noticed various advantages to baldy calves, most importantly fertility. John believes that fertility helps with feed efficiency, femininity and soundness. Even though genetics say fertility is not very heritable, he believes that every trait that affects fertility is heritable.



John continues, "There is not a single trait in a cow herd that can increase profitability more than fertility."

One day John and Reynolds were pregnancy checking at the ranch and kicked out a wonderful cow that was open; this cow was 18 years old.

John noted the cow would not have been in the herd if she hadn't bred back on time, every single year. The two decided that they wanted to clone or duplicate this cow. They found a herd with the help of Trans Ova Genetics in the Sandhills as a proven source of Oocytes, since this particular cow in their own herd was too old.

John was determined to build his own replacements, so the ranch put in 116 of those embryos, in hopes of creating the ideal female he could make a terminal cross offspring from. Garnering 50% of those embryos resulting in live calves is what makes up a very consistent group of baldy cows calving this fall as first-calf heifers at John Ranch.

John expressed that as commercial producers, information is available on how to improve a herd, and at the other end of the spectrum, producers are expected to garner a premium on carcass value. He thought making replacement females and using terminal crosses would be a great system, but it is a long process and isn't as simple as one may think. The technology is improving, but the embryo conception rate is still only at 50-60% of those retrieval fertilized eggs.



Left: John Ranch has developed their own replacement females through an embryo transfer program utilizing extremely accurate Hereford AI sires. The first-calf heifers from this project calved this fall and are phenotypically showing the advantage of the baldy cross.

John Ranch always uses a timed artificial insemination (AI) 30-day program on their heifers with only one or two cycles. John recommends Dr. David Patterson and Dr. Jordan Thomas at the University of Missouri, as they refer to this timed AI program often. He explains that these two recommend the first calf heifers with CIDR's in the 30-day program is most effective. John notes that they use the seven-day protocol with their cows though.

John is convinced that a high percentage of the calves born in the first 20 days of the calving period is a huge advantage. They pick replacements from calves born during that time to keep the calving window short going forward, as fertility is the basis for this short conception timeline.

By receiving semen through the American Hereford Association's National Reference Sire Program, the ranch was able to obtain semen from high accuracy carcass expected progeny differences (EPDs).

Through creating a large group of consistent replacement females, the ranch has also become more marketable for research program opportunities.

John Ranch is currently participating in a research project wanting to use the black baldy females from a result of those embryos for a trial aiming to advance genetic markers.

This research intrigued John into joining the program. For this research, John Ranch took DNA samples from the heifers and bred them to Angus bulls based on the DNA markers.

"We chose two bulls that were very different on some traits, and then paired them to heifers that were also different on those same traits," explains John. "This way, we could confirm some indication that the EPDs matched the marker of DNA."

John has been looking forward to fall calving, as the calves as a result to this program are hitting the ground now. After harvesting this group of calves, carcass data gathered will test the program's theory. If the theory is proven correct, it could give many the ability to enhance the DNA accuracy genetic markers.

John has met lots of influential people in the beef industry. He listed some significant mentors who were pivotal throughout his career, such as Dr. Mark Allen from Trans Ova Genetics, Dr. Patterson at Missouri University, Dr. Don Good, as well as Dr. Miles McKee a professor from KSU who he spent lots of time with traveling to pregnancy check herds.

John Ranch is well-versed in the supply chain of beef production. Working with MFA Health Track Program and the blockchain program inclines their cattle data to ultimately increase cow-calf segment leverage.

Top: Serving as both President of the Missouri Cattlemen's Associations and Chair of the Missouri Beef Council, John is well-rounded in working with all supply chain segments to make the best end product possible.

Middle: John has been impactful on an international level including trade negotiations with Japan and inviting President George W. Bush to speak at the NCBA Convention while serving as president of the organization. As a member of the Meat Export Federation Board and NCBA president in 2006, John has spent hundreds of days traveling and representing the U.S. beef industry on an international stage.

Bottom: Black baldy feeders used for the sire evaluation program are being fed at John's son-in-law's feedlot in Kansas. Records are maintained all the way through production with information shared at harvest.



Rural oute PHOTOGRAPHY

—>>>> Families | Seniors | Engagements <<<<—



BOOK NOW FOR LIMITED FALL DATES!



Best friends since we can remember, our passion lies in laughing hard, enjoying tasty food and making memories wherever our customers have taken us. Often called sisters, it's our shared passion and drive that binds us.

We capture people in their true sense with their surroundings and most often their cherished loved ones. It gives us great joy to see the emotion our customers have when they see our view of the most special people in their lives.

Let us tell your story...!

Jocelyn 417.838.5546
jocelyn@ruralroutephotography.com

WWW.RURALROUTEPHOTOGRAPHY.COM



Do you have something for sale?
Advertise on the web



MHA WEBSITE CLASSIFIEDS PAGE

Cost: \$30/month **Word Count:** limited to 30 words or less

Submission: please submit classifieds posts to
Jocelyn Washam jocelyn@ruralroutecreations.com

Deadline: classified posts must be submitted by the 26th of each month
and paid via credit card before posts go online the 1st of each month

**All classified posts will go up on the 1st of each month with the option to advertise
another month or be removed on the 1st of the next month. Classified posts will be
listed by Missouri Hereford Association districts in alphabetical order of the advertiser.*

Terms: Pre-payment must be made before any advertisement releases.

PPH 10H LADY CLASS 352

Reg: P43322329 Sire: DR World Class 517 10H MGS: PPH 3X Felt 517 304



DALE PECK & SONS

20327 Manila Rd.
Ionia, MO 65335

Cell: 660-619-0108

This is an exceptional cow, pictured at nine years old. Linebred Feltons 517.
She has given us two sons retained as herd bulls and three others sold as herd bulls.

MHA

Mo Hereford Association

SPECIAL THANKS TO THE GENEROUS VIRTUAL FIELD DAY SPONSORS:

Sydenstricker Nobbe Partners
Merck Animal Health
Zoetis
Newport - Boehringer Ingelheim
MFA
VitaFerm
Purina Animal Health
Missouri Beef Industry Council
Paris Vet Clinic
American Hereford Association
Rural Route Creations
The Hoof Steakhouse
Neogen
Keithley-Jackson Herefords
Nation Polled Herefords
Ray Herefords
Dee and Shirley Sokolosky



SPECIAL THANKS TO THOSE WHO PROVIDED EDUCATIONAL VIDEOS FOR THE VIRTUAL EVENT!

Mary Beth Ray, *District 3 Director*
Keith Thomas, *The Hoof Steakhouse*
Mark Reynolds, *Country Meat Shop*
Dr. Sara Thomas, *Paris Vet Clinic*
MFA, Inc. - David Moore and Adam Jones
Amy Phillips - *Missouri Hereford Association*
Mike John & Matt Reynolds - *John Ranch*
Joe Rickabaugh - *American Hereford Association*
Matt Reynolds - *Missouri Hereford Association*
Ray Herefords
Nation Polled Herefords
Keithley-Jackson Herefords

HATS OFF TO MARY BETH RAY FOR ALL HER HARD WORK ON THIS EVENT!

CONGRATS TO THE WINNERS OF THE JUNIOR FIELD DAY CONTESTS!



Momma and Baby

Photography Contest

sponsored by Dee and Shirley Sokolosky

Peewee Division:

1. Kylie Jordan – *Momma and Baby*
2. Grant Waters – *I've got my eye on you!*
3. Kylie Jordan – *Peeking through the Flowers*

Junior Division:

1. Aubrey Ritchie – *Where it all begins*
2. Kristin Waters – *Jessie*
3. Beau Ann Graves – *Eyes say more than words*

Intermediate Division:

1. Tanner McMillen – *Hereford on the Horizon*
2. Rhett McMillen – *Grazing the day away*
3. Tatum McGlothlin – *I'm watching you*

Senior Division:

1. Haleigh Ferguson – *Munchin'*
2. Haleigh Ferguson – *King of the Herd*
3. Haleigh Ferguson – *Peeking through the Trees*



Where it all begins



Munchin'

Speech Contest

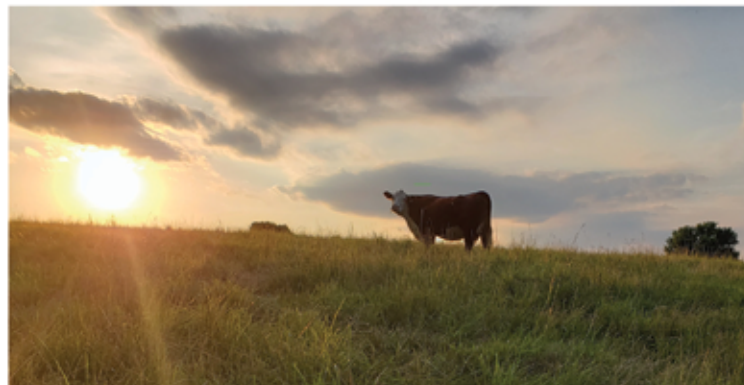
sponsored by Merck Animal Health

Peewee Speech Winner

Grant Waters – age 7 - Speech: *"Herefords and Football"*

Junior Speech Winner

Kristin Waters – age 11 - Speech: *"Horned and Polled"*



OVERALL WINNER FROM ALL AGE DIVISIONS

Tanner McMillen – Hereford on the Horizon



"Impact 1714"

Owned with Knoll Crest Farm

Homozygous Polled

Semen \$40/straw




Neighbors Cattle Company

a partnership of Lili Farms and Hayden Farms

Rogersville & Fordland, MO

417-861-1755

L3Farms.com 

HaydenMachineryllc.com

neighborscattlecompany.com

L III TFL C609 IMPACT 1714

Reg: 43767040 DOB: 01/25/2017

Sire: EFBEEF RESOLUTE CEO

Dam: L III X651 TINE A038

"Elite son of the top
\$CHB bull in the breed"



Building genetics to excel in seedstock and commercial cattle

Selling December 6, 2020 - Missouri Opportunity Sale - *Sedalia, MO*



PRF 973E HALLIE 006H

Reg: 44162883 DOB: 01/15/2020

Sire: C&L RR KJ 364C JALAPENO 973E



PRF 66589 Lena 002H

DOB: 1/8/2020

Sire: /S Mandate 66589 ET

Daughter of 827F



PRF 408B MS TRICKY TIME 827F

Reg: 43993164 DOB: 03/23/2018

Sire: GG Time 0124 408B



Phillips-Renner Farms

Amy Phillips

37144 Brady Creek Rd | Richmond, MO 64085

Cell 816-878-7305 nothead1@aol.com

Herdsmen: Angela and Amanda Phillips

www.prfherefords.com | Follow us on FB & Instagram

MU Cattle Management Workshop Summary

Mytayla Miller, Rural Route Creations

The University of Missouri (MU) Extension hosted a series of online workshops focused on cattle management. The Cow-Calf Operation Winter Feeding Management Workshop, held on Sept. 29, 2020, included three speakers who joined together to discuss elements within a cow-calf operation, such as nutrition, body condition score (BCS) management, weaning management, culling decisions, and economics of weaning calves.

MU Extension Livestock Field Specialist Patrick Davis started the workshop by diving into nutritional requirements. When creating feed rations, he first looks into the cow's lactation or gestation periods to determine the nutritional requirements. For example, an early lactation cow would have different feed requirements compared to a late gestation cow.

Davis explained that lactating cows require high nutrient needs compared to dry cows because they are producing milk for their calves.

Davis mentioned, "Young cows, especially young lactating cows, often require a similar amount of nutrition as older mature cows, but young cows can't eat as much as older cows mainly because of body size."

Davis suggested separating cow groups, such as young lactating cows and mature lactating cows, and feeding based on each group's requirements, therefore, aiming to improve efficiency and reduce feed waste.

Leading into the cold stress effects on nutrient requirements, Davis hesitated to mention cold, wet winter days ahead, but expressed that anything below a critical temperature of 60 degrees Fahrenheit will force a cow to lose insulation, requiring more energy to stay warm. If a wet period continues for a long time and the feed intake isn't increased during that time, the cow will source energy that will negatively impact body condition. To minimize cold stress on cows during the winter, Davis uses an example of a chilling -20 F winter day and recommends additional feeding to create a two-degree increase. This way there is a better chance that the cows' body condition will not suffer during the winter, resulting in a better conception rate later on.

Next, Davis walked through how he determines the nutrient value of a farm's resources. The two tests he would run is a forage test to determine the dry matter intake percentage, and periodical supplement testing for calcium (Ca) and phosphorus (P).

"In order to meet the nutritional needs of a cow we must first understand if the energy or protein need is satisfied in the herd," Davis added.

He recommends using the Pearson Square method or an excel spreadsheet to determine possible changes to your feed. He follows a 2:1 ratio for Ca and P, therefore Ca may need to be added to a grain mixture to create a balanced ratio, or vice-versa.

"In a lot of scenarios, we meet our protein need," Davis stated. "If not, you would add supplement."

Davis continued the workshop on how to verify if the Ca and P ratio was correct using an example of ration balancing for an early lactation cow with the Pearson Square method to determine the actual amount being fed and wasted.

Other feeding considerations Davis mentioned were examining the mineral, trace mineral and vitamin supplement that could be used. Personally, he recommended organic trace minerals because they provide more absorption for the animal. He also suggested getting a mineral that is higher in P than Ca, following the ratio.

Another important factor he mentioned is considering using an Ionophore called Rumensin, specifically 200 milligrams per head, per day. Rumensin is found in minerals but can also be used as a supplement. It not only improves the energy efficiency and performance but also maintains condition of a cow. In replacement heifers, Rumensin is great for producing gain.

Next, Davis touched on BCS, noted as the best way to analyze the effects of your feeding program. The BCS is based on visual appearance of five points on the cow – tail head, backbone, hooks and pins, ribs and brisket. In this scoring, these features are rated on a scale of one to nine:

- 1-3 thin
- 4 borderline
- 5-7 optimum
- 8-9 fat

Davis proposed reaching a BCS of six at calving season, putting the cow at the best chance to get to a rating of five. This way when breeding season comes around, she is at an adequate body condition to get pregnant and be maintained in the herd.

He also mentioned that BCS can help determine

when it's time to wean, as the suckling stress is taken off the cow, so she can bounce back up in BCS.

Overall, Davis recommended to "use BCS, performance and manure score to help make sure that animals are performing properly on the diet."

The second speaker, Andy McCorkill, an MU extension livestock specialist, spoke on weaning management and culling decisions in a cow-calf operation.

He first started by explaining the worth of preconditioning programs, highlighting that it creates productive and efficient calves, and helps reduce morbidity and mortality. McCorkill listed the preconditioning guidelines as: maternal separation, vaccination, nutritional learning curve in calf, castrating, dehorning and deworming.

"This list helps us identify and deal with stressors that can lead to sickness down the road," said McCorkill.

He personally suggested castrating and dehorning first, as those are two big stressors checked off the list.

McCorkill continued to promote that these management practices provide an added value to cattle when they are put on the market because buyers are often willing to pay more for healthier calves with a documentable history.

McCorkill then shared a guideline for vaccinations, touching on viral and bacterial infections, deworming, and implanting. He



recommended vaccinating against Pasteurella, Somnus, Implant, and Brucellosis. He recommended Brucellosis for replacement heifers only, for added security.

He also mentioned the difference between subcutaneous (under the skin) and intramuscular (in the muscle) vaccinations, and recommended, “Go subcutaneous as it is preferred, unless the label notes otherwise.”

As McCorkill moved into the topic of making culling decisions, he shared his personal list of female expectations for a herd. First on the list, the cow must have a calf every 365 days. Secondly, the heifer must calve by two years old, as he believes this deems them to be more productive throughout their lifespan. Other expectations he listed include: the cow must provide sufficient resources for the calf to reach its genetic potential, the cow must maintain her BCS in the current environmental conditions, and the calf produced must be genetically capable to perform.

“Look at these cows as our employees,” McCorkill advised. “Her primary job is to raise an adequate calf for us, to have a calf every 365 days, and to do that without any or minimal assistance.”

McCorkill then introduced the four O’s of culling, a creative guideline to help make culling decisions. The four O’s stand for – open, old, ornery, and other. He explains that this guideline is based on a ‘three strikes, you’re out’ format. McCorkill first spoke about checking if the cow is open by palpation at 50 days, ultrasound at 30 days, or a blood test at 28 days. Next, he spoke about if the cow is getting old, which can be reviewed through documentation or by looking at the cow’s teeth. Other issues that McCorkill mentioned were udder problems, feet and structural issues, and environmental sustainability.

For culling, McCorkill recommended getting rid of absolute culls, then completing a pre-breeding exam and early pregnancy detection, to then pick the animals that will best suit your herd.

He also touched on the timeline of heifer development.

“The ultimate goal is to produce heifers that will work in your environment under your management,” said McCorkill.

After weaning, the heifer has seven months (or more specifically 205 days) to gain weight or BCS in order to breed.

“At breeding time, we want them to be at 55-65% of their estimated mature weight,” McCorkill expressed in connection with BCS that Davis spoke on. “This is the common range where we consider ideal for breeding.”

Wesley Tucker, a MU extension agriculture business and policy specialist, spoke about the economics of weaning calves and replacement heifers to consider in an operation.

He first posed the question, “How do buyers value cattle?”

Tucker responded that it comes down to the price they can sell the calves for, the cost of gain, and the health of the animal. The value of gain can be determined by the seasonal opportunities, the weight of the cattle, and the cost of the gain.

“From an economics standpoint, preconditioning programs are great, but the value needs to be captured by properly documenting,” Tucker encouraged.

This ensures that the added value from preconditioning will result in added profits. Tucker also recommended that before preconditioning, an operation must look at if they have the facilities and resources to put the additional weight on.

Tucker explored monthly average steer prices over the last two decades to display price patterns, average extremes and weight categories to look at factors of value of gain and how they affected price. These patterns suggested different consistencies and variations of value of gain per year.

“You got the least in the summer market, and the fall-winter months paid the most,” Tucker explained a report from the 90s. “When grass is growing, and gain can be put on them cheap and, in the wintertime, the gain is worth a whole lot more and the market has to pay more.”

If you calve in the spring, he recommended weaning the calves and taking advantage of the seasonal opportunity.

From 2000 to 2010, he noticed that the market began to pay more in the summer than the previous decade. He also mentioned lows in the market from events such as when ethanol was first created and caused markets to change. He explained that these events are called Exogenous Variables, otherwise known as external factors, that change the market prices but are out of anyone’s control. These examples prove that looking into the markets seasonally is a great way to track prices and determine when it’s best to sell.

“Will the market pay me to wean and background my calves?” he asked. “In the winter, does the market pay me to put additional weight on these calves?”

His answer to these questions stated that indeed the market pays fairly well for light-weight calves, but at the same time Missouri farmers can grow a lot of fall forage and add gain to the calves.

Next, Tucker began speaking about replacement heifers and started a debate about whether raising or purchasing replacement heifers is more economical. He concluded that there is no right or wrong answer, as each farms’ feed, time and money resources vary, and therefore should this decision.

Tucker posed the question, “Do you know what it costs you to develop a heifer from weaning to pregnancy checking?”

Tucker highlighted key variables that go into replacement heifers and some serious considerations to ponder before deciding whether to purchase or raise your own replacements.

An advantage to buying your replacement heifers that he mentioned was that if you aim to expand the herd quickly or change your calving season, sometimes it is easier to buy within your preferred calving season.

A disadvantage to buying replacement heifers he mentioned is having an open herd poses different health concerns compared to a closed herd. This can be a concerning threat as the new replacements could have been exposed to other viruses that the current herd hasn’t been exposed to. Another disadvantage is from a genetics standpoint. Are the new replacements adaptable to the current environment? All of these points and questions must be considered along with performance and whether or not you can develop the heifers better on your farm or elsewhere.

Tucker highlighted various reasons that weaning and backgrounding your calves can be a good strategy for your herd from an economical standpoint. Overall, he recommended consistently looking at the market rates to help strategize your operation’s cost of gain versus the value of gain to make the best profit.

These three speakers expanded on the topic of cow-calf feeding to help increase efficiency and productivity in Missouri operations.



Events & Deadlines

NOVEMBER

NOV 1 Nomination deadline for MHA 2020 awards

NOV 1 WMC Cattle Co. & Guests Inaugural Bull Sale
Springfield, Missouri

NOV 20 Cattlemen's Congress Entry Deadline
OKC, Oklahoma

NOV 21 Roth Hereford Farm Complete Dispersal
Windsor, Missouri

DECEMBER

DEC 1 Cattlemen's Congress Junior Breeding Heifer Ownership Deadline
Oklahoma City, Oklahoma

DEC 5 Missouri Hereford Association Annual Meeting and Banquet
Sedalia, Missouri

DEC 6 Missouri Opportunity Sale
Sedalia, Missouri

DEC 10 Cattlemen's Congress Late Entry Deadline
Oklahoma City, Oklahoma

JANUARY

JAN 7 Cattlemen's Congress Hereford Junior Heifer Show
Oklahoma City, Oklahoma

JAN 8 Cattlemen's Congress National Hereford Bull Show
Oklahoma City, Oklahoma

JAN 10 Cattlemen's Congress National Hereford Heifer Show
Oklahoma City, Oklahoma

JAN 8-10 Missouri Cattle Industry Convention & Trade Show
Columbia, Missouri

JAN 18 MHN Contract Deadline & March Ad Space & Material Deadline

JAN 22 MHN Camera-Ready March Issue Deadline

MARCH

MARCH 27 The Cowman's Kind XXIV Bull & Female Sale
Lexington, TN

APRIL

APRIL 10 CMPHBA 117TH Annual Sale
Cuba, MO

WIDE RANGE

Bovine Unlimited LLC

Cody & Jocelyn Washam
Wentworth, MO
417-489-5450 Cody Cell
cwshsanguis@hotmail.com
info@widerangebovine.com

Authorized Independent ABS Representative
Certified A.I. Technician
Mass Breeding & Synchronization
Donor Preparation



www.widerangebovine.com



The Missouri Hereford Association is on FACEBOOK!

Like the page at www.facebook.com/moherefordassociation

Keep up-to-date with upcoming deadlines, events and news by following the page!



Homo Polled, Dark Red & Fully Pigmented

HERD SIRE FOR HATCHEE CREEK FARMS

KACZ 58Y FRANCHISE 501C F480

P43891024 • BD: 2/4/2018

Sire: Churchill Kickstart 501C ET

Dam: NJW ABRA 100W Serenity 58Y ET

HATCHEE CREEK FARM

Registered Polled Herefords

Garry and Sundra Mistler

573-859-6631

34963 Maries Rd. 311 • Belle, MO 65013



holidays

a guide to preparing and enjoying the season

The holidays are one of my very favorite times of the year. The less than five weeks between the week before Thanksgiving and Christmas are both busy and hectic, filled with planning, prepping, shopping, wrapping, and doing our best to enjoy every minute. At our ranch, stock shows have winded down the last week of October, but we are gearing up for the winter show season with the Fort Worth Stock show and Rodeo for our daughter and ranch with two weekends of non-stop shows. Getting the house decorated and ready for family parties are pretty much what our lives revolve around coupled with of course our daily ranch duties.

A few tips that help make my holidays a little less stressful is always making lists like my mom always did, buying up staple items from the grocery store well before the holiday a little at a time and making some holiday sweets and appetizers a week or more before to either freeze or keep refrigerated.

At Thanksgiving I've been known to make my Granny's dressing a week before and freeze it. Back when my older daughters were at Texas A&M, Thanksgiving every other year was spent tailgating on that traditional Thursday. I would make not only the dressing beforehand but make my appetizers like my Three Cheese Ball and Artichoke Dip that are family and friend favorites. (Be sure to check out my blog to make these recipes yourself!)

One of my Granny's favorite and simple appetizer was her homemade pimento cheese stuffed celery sticks. I learned from her to always fresh grate

the cheese a few days ahead and prepare the celery by removing the strings and placing in water, to help with day-of-preparation. I learned from my mother to make our family-favorite cornbread dressing either the day or a couple of days before and bake halfway due to the uncooked eggs finishing off the morning of dinner. If you have limited oven space like I do, using crockpots, large roaster ovens and even the outside grill

or electric turkey fryer can really help you spread out the cooking and heat in your house.

Below are a few of my tricks and tips to make the most of your time in the kitchen and spend more time with your family before, during or after the holidays.

- Prep veggies for recipes and appetizer trays beforehand. This was always a rite of passage with my Granny, and the granddaughters loved visiting with her while prepping the pimento cheese stuffed celery. My mom is insistent on this as her way to save time in the kitchen and have the veggies crisp and fresh the day of your meal.

- Place out those dishes you plan to use and even place sticky notes on what you will serve on them. This helps your family members who are helping you serve up the food in knowing where to place the food when prepared or to bake your recipes in.

- Cook recipes you know you can bake or warm up the day of the holiday. This beforehand preparation will help you be even more stress-free. My mother-in-law would bake her turkey, ham and pies the day before as well as prepare her famous potato salad.

- Use nonstick foil or Pam cooking spray to help with clean up time.

- Clean as you go in your kitchen by reloading the dishwasher or reusing mixing bowls. Nothing is worse than a messy kitchen after a long afternoon or morning of cooking. My husband's one gift to me each holiday is cleaning up my kitchen while and after I cook. I am a messy, messy cook...

- Buy up items beforehand you will need for your holiday cooking. This includes storage supplies like my mom's favorite Glad Bags, foil, Saran Wrap and freezer containers for that wonderful leftover turkey and dressing.

- Buy your cornbread, flour, eggs, cream of mushroom soup, turkey (watch for a sale!), and all food a week, if you can, before the holidays. Grocery advertisements will help you know when to get the best deals. Take advantage and freeze what you do not have room in your pantry or refrigerator to keep. I try my best not to go to the grocery store the week of a holiday. It is crowded and puts undue stress on me. Living in the country like most of you, I like to have those staple items on hand and ready to go when I get the urge to start my cooking ahead of time before the holidays.

- Do share the work with other members of your family. Teach your younger and older children to help by focusing on their strengths as young cooks. Everyone loves a compliment, so ask them to make what you know they are good at. The same goes for that sister-in-law who is not the greatest cook or the uncle who does not cook. That sister-in-law could make the best macaroni and cheese, and my uncle knew his job was to bring Chinette paper plates and forks as we always fed more than 30 for holidays. And yes, it is OK to eat on the fine Chinette. Who enjoys washing dishes after a heavy meal? Not me!

- Bake those cakes and sweets a few days before the holidays; choose ones that will keep well. One of my friends will make both a red velvet and German Chocolate cake a month before the holidays, cut them in half, place a half of each together (un-iced) and freeze. One is for Thanksgiving and one for Christmas. Her reasoning was that it helps with preparation time and having the two crowd-favorite cakes make them more apt to be eaten.

- Use that leftover turkey for traditional recipes you use chicken in. Each Friday after Thanksgiving I make my version of King Ranch Casserole and after Christmas use the ham in The Ranch Kitchen's Jambalaya or in my breakfast egg casseroles.

- Freeze up those leftovers that will keep well and you are good for dressing in February.

- Wrapping presents always gets away from me. I try most years to wrap as I go and hide the gifts. I have been known to totally lose the gifts though and find them months later.

I hope these tips and tricks help you stay sane and enjoy your holidays. It honestly is not about the food and presents but the memories you make in the meantime.

Sale Results

Sale Index

- Central Missouri Polled Hereford Breeders Association
- Journagan Ranch/MO State University Genetically Yours Production Sale
- WMC Production Sale

Central Missouri Polled Hereford Breeders Association

Cuba, Mo. | Sept 19

Auctioneer: Jack Lowderman

Lots	Gross	Average
6 Bulls	\$13,900	\$2,316
10 Fall Pairs	\$22,200	\$2,220
6 Spring Pairs	\$15,375	\$2,563
6 Bred Cows	\$8,800	\$1,466
10 Bred Heifers	\$13,700	\$1,370
11 Open Heifers	\$12,225	\$1,111
6 Commercial Lots	\$11,975	\$1,995
55 total lots	\$99,175	\$1,803

TOP BULL LOT

\$3550 - LOT 34 - KACZ 4K Z79 KINETIC 501C G739

Sire: CHURCHILL KICKSTART 501C ET

Sold to: Strickland Farms, Vienna, MO

TOP FALL PAIR LOT

\$2700 - Lot 13- TC MISS RIKKI 257E

Sire: GLENGROVE 100W BRENDAN Z14 w/bull calf

sired by TC 120 MR BUCK 43460938

Sold to: Clarence Meyer, Wellsville, MO

TOP SPRING PAIR LOT

\$1700 - Lot 23 - DFF 1512 FELICIA 822

Sire: RH DAYTON 1512

Sold to: Bade's Polled Herefords, Augusta, MO

\$1700 - Lot 23A - DFF 4356 HAPPINESS 003

Sire: R EXCITEMENT 4356

Sold to: Falling Timber Farms, Marthasville, MO

TOP BRED COW LOT

\$1900 - Lot 35 - KACZ 592U FRANCHISE 190Z 116D ET

Sire: NJW 78P TWENTYTWELVE 190Z ET

Sold to: Santa Fe Del Norte, Richmond, MO

TOP BRED HEIFER LOT

\$1800 - Lot 40 - RTR HOMETRACK KEYSHA 128G

Sire: PRF 10Y HOME TRACK 523C

Bred to: R EXCITEMENT 4356

Sold to: Triple A Farms, Columbia, MO

TOP OPEN HEIFER LOTS

\$1600 - Lot 29X - HCF GM 4R ROXIE G19

Sire: HCF GM 4R REMINGTON 25A

Sold to: Rafter T Ranch Omaha AR

\$1600 - Lot 30 - HCF GM SASHA G16

Sire: HCF GM 4R REMINGTON 25A

Sold to: Rafter T Ranch, Omaha, AR

TOP COMMERCIAL LOTS

\$2800 - Lots 55 & 56 - BWF cows w/Feb brockle

face heifer calves, bred back Hereford

Sold to: Jim Kampeter, Argyle, MO

Journagan Ranch/Mo State University Genetically Yours Production Sale

Springfield, Mo. | Oct 3

Auctioneers: Eddie Burks

Sale Managed by: Midwest Cattle Service

Lots	Gross	Average
17 Breeding Age Bulls	\$72,700	\$3,820
60 Female Lots	\$204,600	\$3,410
90 Total Lots	\$305,300	\$3,392

TOP BREEDING AGE BULL LOTS

LOT 4 \$8000 TO LINDA WAGNER, STOCKTON, MO

LOT 7 \$7200 TO DONNIE WILLIS, DEER, AR

LOT 3 \$5200 TO COTTON AND NANCY HALFORD, BATESVILLE, AR

TOP SPRING BULL CALF LOTS

LOT 21 \$4500 BRUCE MERSHON, BUCKNER, MO

LOT 24 \$4000 TO BADE'S POLLED HEREFORDS, AUGUSTA, MO

TOP COW AND HEIFER CALF LOTS

LOT 36 & A \$10,400 4H RANCH AND ANDI & CHARLI HOWARD, DORA, MO

LOT 56 \$5400 TO JOSH MENZIES, MARSHFIELD, MO

LOT 56A \$2200 TO REYNOLDS HEREFORDS, HUNTSVILLE, MO

TOP BRED HEIFER LOTS

LOT 71 \$5200 RBS POLLED HEREFORDS, MARSHALL, AR

LOT 68 \$3600 MOHICAN POLLED HEREFORDS, GLENMONT, OH

TOP FALL CALVING COW LOTS

LOT 77 & A \$4050 WMC CATTLE CO, WASOLA, MO

LOT 88 & A \$3550 GRAY HORSE HEREFORDS, ADAIR, OK

WMC Production Sale

Wasola, Mo. | Sept 27

Auctioneers: Eddie Burks, Dustin Layton

Lots	Gross	Average
3 Fall Open	\$17,500	\$8,750
Spring Bred Heifers	\$29,700	\$4,950
Spring Pairs	\$193,550	\$5,093
Fall Pairs	\$31,600	\$4,514
1 Spring Open	\$4,000	\$4,000
1 Flush	\$5,000	\$5,000
12 Embryos	\$3,525	\$293.75
Total	\$284,875	

TOP LOTS

Lot 42 \$5400 Mark Brescher

Lot 42A \$5500 (1/2 int) Harrison Cattle Company

Lot 5 \$10,000 C&L Hereford Ranch

Lot 32 \$4000 Annaleigh Mead

Lot 32A \$4,400 Parker Bros

Lot 14 \$5,200 Ryan Nichols

Lot 14A \$3,000 Walker Polled Herefords

Lot 23 \$5,000 Bonebrake Herefords

Lot 23A \$2,700 Day's Family Farm

Lot 16 \$3500 Andy Jenkins

Lot 16A \$4000 Eddie Roth



Maternal Cow Power Selling



Missouri Opportunity Sale
Dec 6, 2020 • Sedalia, MO

MMM BELLE G06

Reg: 44064360

DOB: 03/04/2019

Sire: NJW 73S W18 HOMEGROWN 8Y ET

AI'd on 4/26 to C&L RR KJ 364C Jalapeno 973E
and PE from 5/8 to 8/15 to MMM 226Z Ground
Floor G04.

McCORKILL FAMILY FARMS

Registered Herefords

Mike and Myra McCorkill

152 E Dade 92 • Greenfield, MO 65661

417-637-5228 417-838-2073

Andy, Jenn, Molly & Marylee McCorkill

417-838-0583

Brant, Erin, Knox & Briggs Harvey

417-214-0313

Triple Threat = Structure, Performance, & Eye Appeal



THA 66589 ERNEST 004H

Reg: 44119072 DOB: 2-26-20 Sire: JS MANDATE 66589 ET

Triple H Acres

The Jackson Family • Miller, Missouri

Cell: (417) 827-1049 Ellen Cell: (417) 827-0338

triplehacres@live.com

Heifers, bulls & show prospects available!
Give us a call and stop by for a visit!

Jordan Herefords

Mike, Jess, Jimmy, Nick, & Kylie Jordan
Warrenton, MO

636-359-3741 314-486-5272

www.ockerhausenfarms.com

ockerhausenfarms@yahoo.com

**Come Join Us at the Missouri Opportunity Sale on
December 6th,
2020**



JH Mary Kate 421H
(Sire: FTF Relevant 831F)

FTF RELEVANT 831F



JH Lyndy Jane 403G
(Bred to FTF Relevant 831F)

Quality herd bulls and replacement heifers available!

Hereford Weekend in Sedalia, MO

DEC. 5 @ 5P.M. — ANNUAL MEETING, MEAL AND AWARDS BANQUET

DEC. 6 @ NOON — MO OPPORTUNITY SALE



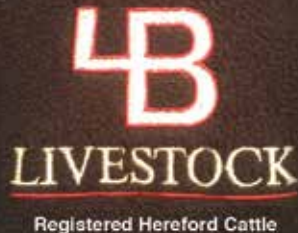
GHR
GREGORY
HEREFORD
RANCH

**Michael, Amy Hanna,
Emily & Sutton Gregory**
10851 Range Line Rd.
Houstonia, MO 65333
660-287-1616

Robert & Sharon Gregory
12389 Chamberlin Rd.
Houstonia, MO 65333
660-620-4020

*** BULLS FOR SALE ***

Celebrating 70 years of raising registered Herefords!



4B LIVESTOCK
Registered Hereford Cattle

Scott & Tammy Adam
Bailey, Britney, Brooklyn & Brayde
735 SE Wexford Rd
Lathrop, MO 64465
Scott 816-809-7094
Tammy 816-809-7049
4BLvsk@gmail.com
adamtammyd@gmail.com

HARDING BROS.
Herefords

Straight Line One Cooper Holden Genetics
BULLS AVAILABLE AT PRIVATE TREATY

Marvin and Everett Harding
Rt. 2 • Ridgeway, MO 64481
660-872-6870

Herefords with Performance, Muscle and Style



THOMPSON HEREFORDS
TOM, LAURA, MADELYN & BRYNLEE THOMPSON
RHODA THOMPSON
Amity, MO • 816-284-3276
www.thegreenstuff1.com

THE GREEN STUFF 1

Elite 8 Online Hereford Sale - Oct. 12, 2020

Celebrating 70 Years
In the Hereford Business

19th Annual Sale
October 18, 2020



Matt, Barb, Tye & Makayla Reynolds
1071 County Road 1231 • Huntsville, Missouri
reynoldscattle@cvalley.net • www.reynoldsherefords.com
Matt: 660.676.3788 • Barb 660.676.4788

Waters Farm
Glen, Kyla, Kristin & Grant Waters
10316 K Highway
Norborne, MO 64668
660.484.3127 home phone
660.707.3646 mobile phone
gwaters@landolakes.com



FINDLEY FARMS



Rod Findley
32505 E. 179th St.
Pleasant Hill, MO 64080
816-540-3711 • 816-365-9959
findleyfarms@gmail.com
2.4 miles East of 7 Hwy.

H&H Herefords
Brad, Sherry & Justin Hurst
Nevada, MO
417.321.2350 B 417.321.0423 S
h2herefords4@gmail.com

Rapp Premium Genetics
Chris & Reba Rapp & family
Rockville, MO
660.679.1019 C 417.684.2424 R
rappreba@gmail.com

H&H Show Supply
Authorized Weaver
Leather Livestock Dealer
in Southwest Missouri

WEAVER LEATHER LIVESTOCK

Give Brad or Sherry a call
to place your order!

www.handhshowsupplies.com

J Bar K Farms
Jerry and Katherine Arnold



16531 E. Militia Rd. • Nevada, MO 64772
(417) 667-8730 (417) 667-1015

Laze-D Herefords
Dennis and Sherry Michael
17770 S. 425 Rd.
Jerico Springs, MO 64756
417-398-0019
lazedherefords@hotmail.com

Bakerville Cattle Co.
Jon and Debra Baker
111 E. North
Timewell, IL 62375
217-653-7546

Registered Red and Black Herefords Available
- Combining the best of both worlds -

KAUFFMAN HEREFORD FARM
908 Loma Drive
Jefferson City, MO 65109

Dennis Kauffman
573-291-6744

Bob Kauffman
573-635-6632

EMAIL: dinkman@aol.com

LUDWIG FARMS

Dale, Rhonda, Trent, Claire & Troy
Linn, MO
Phone: 573-338-6000
Email: ludwigdale@yahoo.com

HERD SIRES
Ludwig Catapult X-Box C21 ET
Ludwig Trust Ranger C19

AI SIRES
R Leader • Frontier • Torque • Final Test
Innisfail WHR X651/723 4103 ET

ROCKING F POLLED HEREFORDS

Frank and Pam Flaspohler
222 County Road 402
Fayette, Missouri 65248
Phone: 660-537-4809
E-mail: fwf@rockingf.com

F

PRODUCING POLLED HEREFORD SEEDSTOCK

District 6: Director – Rick Steinbeck

AMR Alex Roth
Cattle Co.
Alex and Michaela Roth
Altenburg, MO
(573) 576-5141

Polled Herefords
Dale, Lindy & Anna Roth
Altenburg, MO
(573) 579-3473



Biglieni FARMS

Tom Biglieni and Jill Elwing
2109 Des Peres Rd. • St. Louis, MO 63131
417.827.8482 cell
tgbig@sbcglobal.net

Bourbeuse Bend Herefords

Jerry, Cheryl & Blake Voss
573-368-9001 (Blake)
Polled & Horned Genetics

Beaufort, MO

"Today's Cattle With Tomorrow's Genetics"

Souders Farm
Registered Polled Herefords
John, Nancy, Tyler & Dakota
Rosebud MO.
(573) 764-4718
stherefords@gmail.com



District 7: Director – Mike McCorkill

ET Heiler calves out of
"Flame" & "Jazzy"
Sired by
PCC 527C APC JUSTIFIED 8125 ET

BRF Miss Flame 4x

Blue Ribbon Farms
11768 W. Farm Rd. 34 • Walnut Grove, MO 65770
Jeff & Stephanie Rawie 417-209-5538
jeffrawie24@yahoo.com
Aaron & Kylie Noble

BRF Miss Harper 4A ET

CHOATE
Polled Herefords

Mike and Cathy Choate
417-880-3925
Nathan and Julie Warner
417-298-5968

5373 South 226th Road
Pleasant Hope, MO 65725
choateherefords@gmail.com

DUVALL
Polled Herefords

Gary and Frances Duvall
1082 Hwy 97 • Lockwood, MO 65682
417-232-4817 H 417-827-2163 C
duvallherefords@keinet.net

Herdsmen: Miguel Cifuentes 417 793-5082

Holmes Hereford Farm
Greg & Vicki Holmes
56 State Hwy A
PO Box 482
Wheaton, MO 64874
Phone: 417-652-7463
Cell: 417-848-9010
holmesfs@windstream.net

Horned & Polled Herefords


Visitors Are Always Welcome



APH
Aufdenberg
Polled Herefords

"Quality You Can Count On"

Darrell Aufdenberg
Jackson, Missouri
(573) 270-6755 cell
aufdenbergd@yahoo.com



McMillen's Toothacre Ranch

Trent & Mary McMillen
& Family
9128 W. Farm Road 30
Walnut Grove, MO 65770

417-788-2787 home • 417-830-7257 cell • 5inthehive@gmail.com



LPH

Lizzie's Polled Herefords
Kenny, Michelle & Elizabeth Spooler
1788 County Road 347
Jackson, MO 63755
573-270-4145
lphspoolerfarms@aol.com



R&L Polled Herefords

4401 S. 200th Rd.
Halfway, MO 65663

*Herd Size Prospects
Select Females*

Kody Agee, Showman
417-399-7940

Lendell Voris
417-445-2461



Out of State

Toby & Debby Dulworth
270-224-2993


DOGWOOD FARM

Herefords since 1964

Pasture-Selected

Made to Graze
dogwood@brtc.net

website: dogwoodherefords.com 2492 Kirkman, LaCenter, KY 42056



SHOENBERGER
POLLED HEREFORDS
Est. 2003

ERIC, JR.
417-860-7151

AURORA, MO

ERIC & KAMI
417-737-0055



MALONE
Hereford Farm

1371 Road F ~ Emporia, KS 66801
Phone/Fax: 620-342-7538
Alton's Cell: 620-794-2358
amalone@lcwb.coop

Alton, Marie, Brian, Dustin and Michelle Malone



District 8: Director – Travis McConaughy

WPH Ranch
Williamson Polled Herefords
Williamson Personalized Hospitality

Monty Williamson: (417) 247-0782
Georgia Williamson: (417) 247-0298
Emily Durnell: (417) 252-0291

Email: wphranch@gmail.com
Website: wphranch.com
AirBnB: WPH Cabin
Facebook: WPH Ranch

975 Stillhouse Road
Mountain View, MO 65548

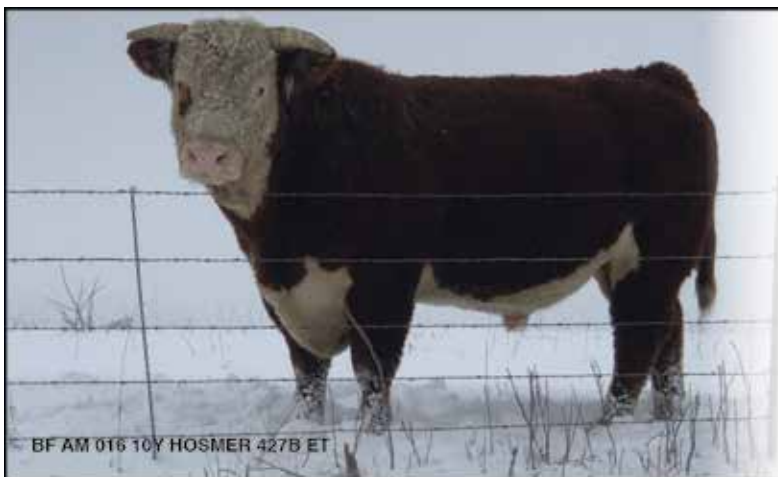


T TOWNER FARM
HEREFORDS POLLED & HORNED

John Towner
320 E. 47 Hwy
Girard, KS 66743
P: 620-724-6636
C: 620-249-6636
john@townerfarm.com

www.townerfarm.com





BELZER FARMS

Breeding for Excellence

11870 June Dr.,

Browning, MO 64630

Ted Belzer 660-244-3333

Tony Belzer • 660-734-8006

April Miller • 816-305-7490

aprilmiller1732@gmail.com

Hereford and F1 Replacement Heifers for Sale

Advertising Index

4B Livestock	35	Findley Farms	35	Open Range Cattle Co.	20-21
Alex Roth Polled Herefords	36	Gregory Hereford Ranch	34	Phillips-Renner Farms	27
AMR Cattle Co.	36	Gregory Polled Herefords	8	R&L Polled Herefords	37
Aufdenberg Polled Herefords	6, 37	H&H Herefords	35	Rapp Premium Genetics	35
Bakerville Cattle Co.	35	H&H Show Supply	35	Reed Farms	3
Belzer Farms	38	Harding Bros. Herefords	35	Reynolds Herefords	35
Biglieri Farms	36	Hatchee Creek Farm	30	Rocking F Polled Herefords	36
Blue Ribbon Farms	36	Holmes Hereford Farm	37	Roth Hereford Farm	17
Bonebrake Registered Herefords	13	J Bar K Farms	35	Rural Route Photography	24
Bourbeuse Bend Herefords	36	Jim D. Bellis Family	Back Cover	Shoenberger Polled Herefords	37
Butler Polled Herefords	20-21	Jordan Herefords	34	Show Me Genetic Services	38
Candy Meadow Farms	15	Journagan Ranch / Missouri State	3	Souders Farm	36
Central MO Polled Hereford Breeder's Assoc	39	Kauffman Hereford Farm	36	Steinbeck Farms	18
Choate Polled Herefords	36	Laze-D Herefords	35	Thompson Herefords	35
College of the Ozarks	16	Lizzie's Polled Herefords	37	Tri-L Polled Herefords	10
Crutsinger Hereford Farm	10	Ludwig Farms	36	Triple A Farm	16
Dale Pecks & Sons	29	Malone Hereford Farm	37	Triple H Acres	33
Day's Family Farm	9	McCorkill Family Farms	33	Towner Farm	37
Dogwood Farm	37	McMillen's Toothacre Ranch	18, 37	Waters Farm	35
Doss Hereford Farms	6	Menzies Cattle Co.	14	WMC Cattle Co.	2
Duvall Polled Herefords	36	Missouri Opportunity Sale	11	Wide Range Bovine Unlimited	30
Falling Timber Farm	7	Neighbors Cattle Company	27	WPH Ranch	37



8134 E. State Hwy C
Strafford, MO 65757



Custom Semen Collection
Bull Housing
Semen Storage & Shipping
Breeding Supplies

www.ShowMeGen.com
417-736-2125

Mark your calendar!
117th *Annual Sale*



CENTRAL MISSOURI POLLED HEREFORD BREEDERS ASSOCIATION

April 10, 2021 • NOON

Interstate Regional Stockyards • Cuba, MO

THANK YOU

to all our customers from the
fall 2020 sale! We appreciate your
support very much!



For more information contact:

Larry Day, Sales Manager

Central Missouri Polled Hereford Breeders Association

12139 Highway 135 | Pilot Grove MO 65276

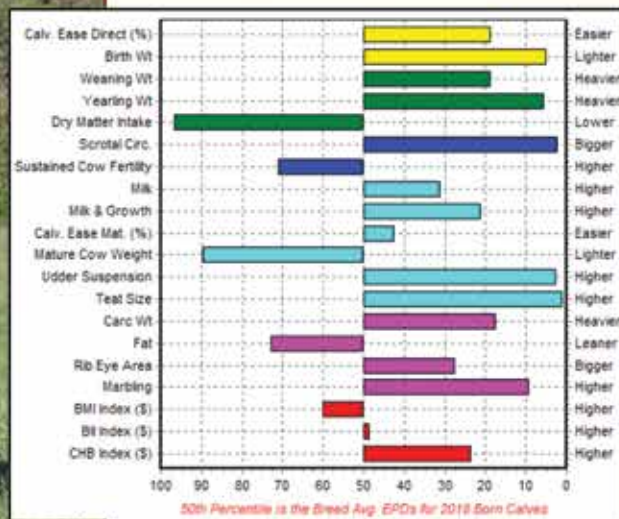
660-834-4678 **Home** | 660-621-0812 **Cell**

Email: *ljday@iland.net*

www.centralmissouripolledherefords.com



Further Bellis Examples of "No Excuse Herefords"



JDB W017 A004 Good Reason D638 (P43762743)

RRH MR FELT 3008 {CHB,SOD,DLF,HYF,IEF}
 JDB GHCC 3008 REASON W017 ET {DLF,HYF,IEF}
 JDB GHCC LADY LEGEND P098
 BOYD WORLDWIDE 9050 ET {DLF,HYF,IEF}
 JDB 9050 Y027 RACHAEL A004 ET
 JDB 4R REVA Y027 {DLF,HYF,IEF}



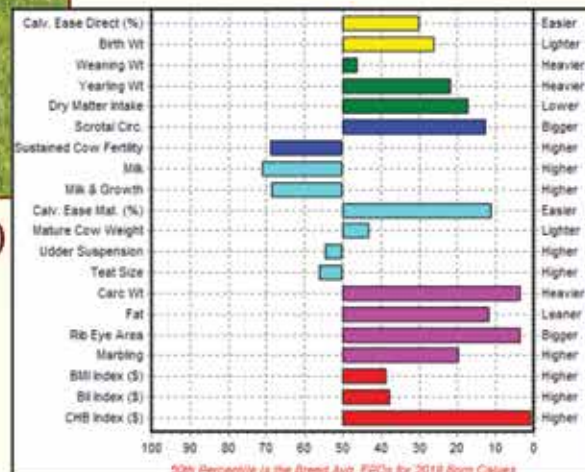
J.D. Bellis Family

Jim D. & Carla Bellis
 19264 Lawrence 2170 • Aurora, MO 65605
 Jim cell: 417-466-8679
 JimBellis@missouristate.edu
 Jonathan Bellis 417-440-1300
 Kevin, Jamie, Harper & Ivey Johansen
 Kevin cell: 573-289-1061
 Neal, Joanna & Nora Wilkinson



JDB 100W 507P Trust C555 ET {DLF,HYF,IEF} (43775798)

KCF BENNETT 3008 M326 {SOD,DLF,HYF,IEF,MDF}
 NJW 73S M326 TRUST 100W ET {SOD,CHB,DLF,HYF,IEF,MSUDF}
 NJW P606 72N DAYDREAM 73S {DLF,HYF,IEF,MSUDF}
 REMITALL ONLINE 122L {CHB,SOD,DLF,HYF,IEF}
 STAR ONLINIA DOMINETTE 507P ET
 RB L1 DOMINETTE 4059 {DLF,HYF,IEF}



Owned with: Wirthmore Polled Herefords, Dirk Wirth 417-252-3989, Willow Springs, MO