

MARCH 2018

# MHN

## Missouri Hereford News

Official Publication of the Missouri Hereford Association

### History & Advances *a Breed Made of Both*

#### *Inside this issue*

MO Members Awarded with Excellence  
Frazer Inducted into Hall of Fame  
National Western Center Campus Development  
Civil Bend Gift Keeps Giving

Missouri Hereford News  
30487 Hwy J  
Wentworth, Missouri 64873

Printed  
Standard  
US Package  
PAID  
StateGroup

# KACZMAREK 4K HEREFORDS



## CHURCHILL KICKSTART 501C ET (DLF,HYF,IEF)

**P43603037 — Calved: Jan. 1, 2015 — Tattoo: LE 501**

CHURCHILL SENSATION 028X (SOD)(CHB)(DLF,HYF,IEF)  
CHURCHILL RED BULL 200Z (CHB)(DLF,HYF,IEF)  
P43281860 CHURCHILL LADY 002X ET (DLF,HYF,IEF)

UPS DOMINO 3027 (SOD)(CHB)(DLF,HYF,IEF)  
CHURCHILL LADY 7202T ET (DLF,HYF,IEF)  
GOLDEN OAK OUTCROSS 18U (SOD)(CHB)(DLF,HYF,IEF)  
CHURCHILL LADY 600S ET (DLF,HYF,IEF)

HVH KREMLIN 57F 108K  
HVH OKSANA 4L 33N (DLF,HYF,IEF)  
P42353096 HVH GENETIC QUEEN 53H 4L (DLF,HYF,IEF)

MSU MF HUDSON 19H (SOD)(CHB)(DLF,HYF,IEF)  
HVH OKSANA 10Z 57F  
GK GENETIC EXPLOSION (SOD)(DLF,HYF,IEF)  
HVH MISS 512 35D 53H

CE	BW	WW	YW	DMI	SC	SCF	MM	M&G	MCE	MCW	UDDR	TEAT	CW	FAT	REA	MARB	BMI\$	BIIS	CHBS
3.5	0.0	54	87	0.0	0.9	15.3	25	52	2.9	116	1.40	1.60	66	0.006	0.52	-0.03	24	20	31

- Kickstart, the ultimate herd bull with thickness, growth and fantastic EPDs.

**Check out  
KICKSTART's  
Progeny Available  
NOW!**

### AI Sires

Churchill Kickstart 501C  
Churchill Rough Rider 719E  
SHF Zane X51 Z115  
MSU TCF Revolution 4R  
NJW 73S W18 Hometown 10Y ET

### Herd Sires

NJW 73S 980 Hutton 90H  
KACZ Houdini 102A  
Boyd Masterpiece 2058  
KACZ 68T Frontier 190Z 114D  
KACZ 102B Tailgate 19W 4D

### Thank you to the following

for purchasing KICKSTART bulls at the  
Missouri Opportunity Sale:  
College of the Ozarks, Point Lookout, Mo.  
(Tamara Holder)  
Heyen Farms, Medora, Ill. (David Heyen)  
Zech Francis, Stoutland, Mo.

**Congratulations to Ray Cunningham**, NJHA member and son of Ted and Ashlee, DVM Cunningham, for the purchase of a Kickstart show heifer.

**Joe Kaczmarek**

417-894-1505

4joekaczmarek@gmail.com

**KACZMAREK HEREFORDS**

P.O. Box 434, Salem, Mo.

**Bill and Roberta Kaczmarek**

573-729-5923

**Tony Kaczmarek**

573-202-4132

3ajkacz@gmail.com

**KACZMAREK 4K HEREFORDS**



# "Predictable Proven Bull Power"



## CHECK THEM OUT!



### **LPH 145Y DIAMOND MINE 23D (43709812)**

SIRE: FTF PROSPECTOR 145Y

DAM: BY MSU TCF Revolution 4R

*Attractive, dark red, Homozygous Polled*

CED 1.9 BW 3.5 WW 65 YW 108 M 30

M&G 62 REA 0.42 MARB 0.33



### **MPH Z3 BOX TOP C16 (43630197)**

Sired by: MPH 10H Juice Box Z3

Dam: MPH 1030 Brandi W19 (DOD)

*Can be used on heifers—low birth weight, outcross pedigree, dark red, conservatively marked - Sire is in ABS stud*

CED 6.5 BW 0.7 WW 61 YW 92 M 35

M&G 66 REA 0.10 MARB 0.21



### **LJR MSU X51 BOSCH 371B (43537292)**

SIRE: KCF BENNETT REVOLUTION X51

DAM: LJR MORGANN 385X by Glengrove LJR Monty

*Great phenotype with awesome performance*

CED 2.1 BW 2.4 WW 60 YW 102 M 17

M&G 47 REA 0.97 MARB 0.28



### **MPH 10H SPLASH B12 (43524813)**

SIRE: DR WORLD CLASS 10H

DAM: MPH 743 FANTASIA X3

*Flawless structure, conservatively marked, homozygous polled, full brother to ABS sire MPH 10H Juice Box Z3*

CED 11.8 BW -1.5 WW 54 YW 78

M 33 M&G 60 REA 0.39 MARB 0.09

# LJR



**Missouri State**  
UNIVERSITY

Rt. 1 Box 85G • Mountain Grove, MO 65711  
Marty Lueck, Manager 417-948-2669  
Cell 417-838-1482 • mvlueck@centurytel.net

27th Annual Production Sale  
Saturday, October 6, 2018 • Springfield, Missouri

# REED FARMS

Registered Polled  
Herefords

Show Me Polled Hereford Classic  
November 17, 2018  
held at Roth Hereford Farm

Jim and Linda Reed  
P.O. Box 126  
Green Ridge, MO 65332  
660-527-3507 • cell 417-860-3102  
reedent@iland.net  
www.reedent.com

Show Me Classic Bull  
and Female Sale  
Saturday, April 7, 2018



# Editors

"Out with the old; end with the new." That's how the saying goes, but does it really ring true? Our breed is built on heritage and one thing is for sure, without it, we would be hard-pressed to be as successful as we are today. However, should we not also give credit to those young and progressive breeders?

Our breed is made up of both the successful, built-to-last programs and also the newer, technologically advancing farms. That's what makes the Hereford breed and associations where they are today. It's this effort to work together of all ages and experiences that set the tone.

If you were in Denver, the Hereford breed was surely recognized as the highest quality breed show. Numbers were record breaking in both cattle and attendees. With the new National Western Center developing, the National Western Stock Show is sure to remain a Hereford hub for many more generations to come.

Members like Missouri Hall of Famer David Frazer laid the foundation for the state of Missouri to be in the national spotlight, and in this issue we feature Shelby Bagnell, Britney Adam, Rachael Bagnell, Ellen Mason, Madi Ridder, Ben Ridder and Missouri State University/Journagan Ranch, all young, aspiring youth and young adults who are making Missouri so proud with their recent achievements on the national level.

Speaking of youth and the history of the Missouri Junior Hereford Association, we take a special look back at the contributions made by Civil Bend Herefords. Their donation several years back is truly the "Gift that Keeps on Giving."

The American Hereford Association and state association, have many new initiatives and upcoming events. This issue is full of news from your national association; new programs you certainly want to get involved in! The Missouri Hereford Association awarded the most deserving members of last year at the annual meeting and banquet in December.

As new calves are born, it's already time to start preparing how you will sell them in just a few short months. Rural Route Creations is the design and photography division of Dorran Marketing Inc., a full-service livestock marketing company, and we would love to help with your fall marketing!

Have a great spring, and enjoy this edition of the MHN!

– The Editors, *Rural Route Creations*

Cassie Dorran, editor

Jocelyn Washam, editor



This newsletter is edited by  
**Rural Route Creations**  
30487 Hwy J • Wentworth, MO 64873  
[www.ruralroutecreations.com](http://www.ruralroutecreations.com)

## 2018 Publication Dates

Issue	Ad Space & Material Deadline	Camera Ready-Ad Submission
March 1	Jan 22	Jan 26
July 15	June 11	June 15
September 15	Aug 13	Aug 17
November 1	Sept 27	Oct 3

“Our breed is made up of both the *successful, built-to-last programs* and also the *newer, technologically advancing farms*.”



### Advertisement & News Submissions:

Cassie Dorran 403-507-5953 [cassie@ruralroutecreations.com](mailto:cassie@ruralroutecreations.com)  
Jocelyn Washam 417-838-5546 [jocelyn@ruralroutecreations.com](mailto:jocelyn@ruralroutecreations.com)

*Rural Route*  
CREATIONS

## Advertising Rates:

Advertising rates include design at no extra cost! Two design proofs will be provided by email with each advertisement purchase. If additional changes or inclusions need to be made after the second proof, the advertiser will be billed at \$50 per hour.

All contracted ads are for the current calendar year.

Ad Type	Cost Per Issue	4X Contract Price
Full page color ad	\$275	\$1000*
Half page color ad	\$150	\$528
Full page b&w ad	\$222	\$792
Half page b&w ad	\$135	\$475
Quarter page color ad	\$70	\$255
Business card color ad	(contracted only)	\$150

\* All ads must be received by deadline!





## IN THIS Issue

- 4 Words from the Editors
- 4 Publication Dates and Advertising Rates
- 5 Missouri Hereford Association Officers
- 8 State Association Update
- 10 News from the American Hereford Association
- 10 2018 Missouri Hereford Field Day
- 12 Women Association Update
- 12 2018 Missouri Hereford Queen Crowned
- 12 The Ranch Kitchen Recipe
- 14 Junior Association Update
- 14 2017 NJHA Fed Steer Shootout Winners
- 15 Missouri Junior Hereford Association Deadlines
- 15 NJHA Fed Steer Shootout Kicks Off with Group Two
- 16-17 Gift that Keeps on Giving
- 17 BioZyme Inc. Donates Through Feed the Future
- 18 The Bald-Faced Truth About Hereford Genetics
- 20 AHA Office Move
- 22 National Hereford Queen Contest
- 28 AHA Releases Bolt Genetic Evaluation
- 32 Sale Results
- 36 Around the Barn Membership Update
- 38 Association & Industry Events & Deadlines
- 38 Premium Red Baldy Program Released
- 43 MHN and Missouri Website 2018 Opportunities
- 45 Life is Simple
- 46 Show Results – NWSS
- 46 Advertising Index
- 46 USDA Releases New Stats

**30-31** Missouri *Recognizes Winners*  
2017 awards were given to deserving individuals

**34-35** *Frazer* Herefords Honored  
Early breeders to have an annual production sale

**39-41** *National Western* Center  
Developments underway for 2023 completion



## Missouri Hereford Association

### Officers and Directors

[www.moherfords.org](http://www.moherfords.org)

<i>President</i>	Justin Sissel	Elkland	District 7
<i>Vice President</i>	Mark Abramovitz	Columbia	District 5
<i>Secretary/Treasurer</i>	Matt Reynolds	Huntsville	
<i>Directors</i>	Amy Phillips	Richmond	District 1
	Brian Littleton	Keytesville	District 2
	Mary Beth Ray	Paris	District 3
	Tim Bernt	Leeton	District 4
	Rick Steinbeck	Hermann	District 6
	Travis McConaughy	Wasola	District 8
	Darrell Aufdenberg	Jackson	District 9

To download a Missouri Hereford Association membership application and to view most current events, applications and announcements, visit the Missouri Hereford Association website at [www.moherfords.org](http://www.moherfords.org)

**Missouri Hereford Association**  
Matt Reynolds,  
Secretary/Treasurer  
1071 C.R. 1231  
Huntsville, Missouri 65249  
660-676-3788



Cover photo © Rural Route Creations  
at Glengrove Farm, Rolla, Mo.



## Bulls selling in the Arkansas Bull Sale – March 24, 2018



**TAG 1727 - Reg: 43826313**  
DOB: 2/23/17 Sire: McCabe LHF L1 Domino 139 ET



**TAG 1643 - Reg: 43795302**  
DOB: 9/1/16 Sire: UPS Sensation 2296 ET



**TAG 1664 - Reg: 43765090**  
DOB: 9/10/16 Sire: DKF RO Cash Flow

Also selling: Tag 1709 - Reg #43826285 Tag 1675 - Reg #43763918



**TAG 1701 - Reg: 43826313**  
DOB: 1/2/17 Sire: SHF All Star 42X

## Bull selling in the Southwest MO Performance Test Bull Sale March 26, 2018

Also selling:  
Tag 1710 - Reg #43826287  
DOB: 2/6/17  
Sire: Grndview CMR 156T Vision



**AI and MD Bonebrake**  
Springfield, Missouri  
Manager: James Henderson  
417.588.4572

## CRUTSINGER HEREFORD FARM

Registered Herefords • Whitewater, Missouri



*"Crut Rock Sugar N Spice 304E"*  
2017 MSF Spring Heifer Calf Class Winner  
Owned by Morgan &  
Lauren Crutsinger

*Bulls and Females for Sale.  
Please call us to view our herd!*

**Livestock Trucking**  
**Feeders, Fats, Cows, Hogs**  
Delivery to MO, KS, NE,  
OK, TX, SD



**Call for your truckload needs!**

**Commodity Sales and Trucking**  
Buy from us or book your own feed.  
Our fleet of modern 45' belt trailers/livestock  
trailers haul corn gluten, pelleted soy hulls,  
distillers grains, cotton seed, and wet feeds.  
We deliver into flat storage or elevators.

## CRUTSINGER FEED & FREIGHT

AGRI-Commodity, INC. • Whitewater, Missouri  
Phone Office 573-794-1174 Larry Cell 573-979-9022  
Angie Cell 573-979-1706



**FTF**

# Falling Timber Farm Bull & Female Sale

*9th Annual* Saturday, March 17th, 2018  
Live Auction 5:30 pm at the Farm

## Selling 40 Bulls and 40 Females

30 Top Cut Yearling Hereford Bulls with Genomic-Enhanced EPD's

18 Month Old Hereford Bulls Fall Bred Hereford & Baldy Heifers Yearling Hereford Heifers

18 Month Old Angus Bulls Fall Bred Cows w/ Heifer Calves 5 Year Old Cows w/ Heifer Calves

FTF Classy Lady 322A



Selling 5 Year Old Cows  
with Heifer Calves!

FTF Powerhouse 7407E



FTF Porterhouse 455B x Grandview 70Oaks Sonora

CED	BW	WW	YW	Milk	M&G	CHB
2.6	1.7	58	93	30	59	29

FTF Powerhouse 7417E ET



FTF Porterhouse 455B x 4K Trent G605 L32

CED	BW	WW	YW	Milk	M&G	CHB
2	2.3	60	100	29	59	27

FTF Complete 763E



FTF Complete 461B x FTF Prospector 145Y

CED	BW	WW	YW	Milk	M&G	CHB
7.1	2.9	62	99	33	64	31

FTF Porterhouse 745E



FTF Prospector 145Y x DR World Class 517 10H

CED	BW	WW	YW	Milk	M&G	CHB
-0.3	3.9	66	100	30	63	33

FTF Revolution 715E



MSU TCF Revolution 4R x FTF M326 Fabricator 838U

CED	BW	WW	YW	Milk	M&G	CHB
3.5	2.0	57	88	22	51	30

FTF Prime Product 719E



FTF Prime Product 226Z x KJ C&L Logic 023R ET

CED	BW	WW	YW	Milk	M&G	CHB
3.2	0.3	60	95	25	55	30

FTF Value Added 718E



TH 122 71I Victor 719T x FTF Revolution 2429Z ET

CED	BW	WW	YW	Milk	M&G	CHB
11.9	0.3	54	78	28	55	26

FTF Net Merit 735E



FTF Net Merit 444B x MSU TCF Revolution 4R

CED	BW	WW	YW	Milk	M&G	CHB
6.1	0.5	52	81	27	53	22

FTF Leader 751E



R Leader 6964 x DR World Class 517 10H

CED	BW	WW	YW	Milk	M&G	CHB
5.9	2.6	70	112	30	65	34

**FTF**

call or email for a catalog or view videos online

Glenn & Yvonne Ridder John, Heidi, Madi, & Ben Ridder Jeremy Couch  
636-358-4161

[www.fallingtimberfarm.com](http://www.fallingtimberfarm.com)

# Falling Timber Farm

## Marthasville, MO

Find us on Facebook:  
Falling Timber Farm

**DVAuction**  
Broadcasting Real-Time Auctions



# Update

I know this is a very exciting time of the year as the new spring calves have been hitting the ground.

Another exciting time was the annual meeting and Opportunity Sale held this past December in Sedalia. The weekend kicked off with the annual meeting and awards banquet on Saturday night. The largest crowd ever in Sedalia of 170 were in attendance at the banquet, which was jam-packed with awards from the Missouri Hereford Association (MHA), Missouri Junior Hereford Association (MJHA) and the Hereford Women of Missouri.

We all need to say thank you to the many breeders who purchased Missouri State Fair (MSF) trophies and sponsors of the semen packages to support the MSF 4-H and FFA steer shows. Also, thank you to the many auction and silent auction donations that support association activities and scholarships, along with all the junior and Hereford Women support.

I want to thank Bill Nation for his past six years of service as a board member. Mary Beth Ray was elected to the board representing district one. Kenny Spooler also served the past six years on the board, and we thank him for his service. Darrell



**Matt Reynolds**  
Missouri Hereford Association  
Secretary/Treasurer

On Sunday at noon we kicked off the 2017 Opportunity Sale which was also full of excitement. There were 30 consignors who brought 56 lots that averaged \$3,270. Look for the complete sale report in this issue. We issued 110 buyer numbers for the full house crowd and had 111 watching on LiveAuctionsTV. I want to thank the board, consignors, bidders, buyers and spectators for making this a very exciting event!

At our recent January board meeting the board made decisions to make the 2018 annual meeting and Opportunity sale just as exciting. Our annual January membership letter was mailed in January with a second notice being mailed very soon. This is a reminder to receive an award in December you, your parents or grandparents must

Aufdenberg was re-elected on the board for district nine. Mark Abramovitz was re-elected to the board for his second term of district five, and he also serves as your Vice President. Justin Sissel from district seven was elected as your President for 2018.

*"I want to thank the board, consignors, bidders, buyers and spectators for making this a very exciting event!"*

have their dues paid by April 1, 2018. The board also set a deadline of May 1, 2018 for the website membership listing. These two dates have been set by the board and will be enforced!

May 1, 2018 is also the deadline for you to nominate your operation to consign to the 2018 Opportunity Sale. You must send me your \$100 nomination fee to be listed on the consignors' list to get a visit from the screener Joe Rickabaugh at the American Hereford Association (AHA) office.

The board approved to have a booth at both the 2018 Farm Fest and Missouri Cattlemen's Association Convention. Another exciting field day/tour is being planned by breeders in district six. Please contact Rick Steinbeck if you are interested in being apart of this event.

One last reminder is the 2019-2020 membership directory will be put together in January of 2019. All 2018 memberships will be listed in the new directory, so please plan now to become a member of this great association.

Watch the calendar of events for important dates. We wish you all one exciting spring!!

— *Matt Reynolds*, MHA Secretary/Treasurer

## What are we all excited about??



## APH

**Aufdenberg Polled Herefords**  
Darrell & Karen Aufdenberg

Jackson, Missouri  
(573) 270-6755 cell  
aufdenbergd@yahoo.com

## Doss Hereford Farms

**Gary & Debbie Doss**  
Smithville, Missouri  
(816) 699-8831 cell  
DHF6200@aol.com

Reg: 43711600 • DOB: 03/19/2016 • Sire: R NEW YORK 5083

	Calv. Ease Direct (%)	Birth Wt	Weaning Wt	Yearling Wt	Dry Matter Intake	Scrotal Circ.	Sustained Cow Fertility	Milk & Growth	Calv. Ease Mat.	Mature Cow Weight	Udder Suspension	Teat Size	Carc Wt	Fat	Rib Eye Area	Marbling	BMI Index (\$)	Bil Index (\$)	CHB Index (\$)	
	EPD	+4.8	+2.1	+83	+117	+1.0	+1.4	+18.1	+27	+68	+6.8	+125	+1.20	+1.30	+90	-0.015	+0.48	+0.17	+\$28	+\$25
Acc	.30	.46	.38	.38	.13	.26	.08	.12	.10	.21	.28	.27	.16	.18	.17	.17	-	-	-	

**SEMEN:**  
\$25/unit - non cert.



*Thank you to the*

**2017**  
*Missouri*  
**Opportunity Sale Buyers**

Jeff Koechner – Mo  
Steve Wright – Wis  
Michael Simon – Mo  
Shelby Bagnell – Mo  
Rachel Bagnell – Mo  
Wayne Laramie – Mo  
Gary Johnson – Mn  
Triple H Acres – Mo  
Zech Francis – Mo  
McKalie Lorenz – Mo  
Jungleblut Polled Herefords – Mo  
Flowers LSF Ranch – Mo  
Kelsey Kwiatkowski – Ks

Todd Jones – MO  
Chris Rapp – Mo  
Rhett McMillen – Mo  
Cassie & Krista Allsheid – Il  
Wooden School Ranch – Mo  
Shoal Creek Herefords – Mo  
Dean McKibben – Mo  
K&B Herefords – Mo  
Bryan & Kala Trantham – Mo  
Brock Nichols – Mo  
Menzies Cattle Co. Mo  
David Heyen Farms – Il  
Mike Ettinger – Mo

Jim Bonderer – Mo  
Jonas Coon – Mo  
Ezra Vantassel – Mo  
College of the Ozarks – Mo  
Jensen Decker – Mo  
Kenneth Buchanan – Mo  
Shoenberger Polled Herefords – Mo  
Jon D Edwards – Mo  
Falling Timber Farms – Mo  
Madison Ridder – Mo  
Benjamin Ridder – Mo  
Burdens' Herefords – Mo

**MARK YOUR CALENDARS**

**2018 Missouri Opportunity Sale**

**Sunday, December 2, 2018**

Noon • Missouri State Fairgrounds • Sedalia, MO

Annual Meeting and Banquet Saturday, December 1, 2018

Hosted by:

Missouri Hereford Association

For more information, please contact

Matt Reynolds, Secretary/Treasurer  
Huntsville, MO  
660-277-3679 660-676-3788 cell  
reynoldscattle@cvalley.net

**WWW.MOHEREFORDS.ORG**

## American Hereford Association

### A Bit More

Since the last issue of the Missouri Hereford News several activities have occurred which have positive effects on Hereford breeders in Missouri. A quick review of these hopefully represents several steps forward for Hereford genetics and even more importantly maybe stirs some future plans for several breeders as we move forward in 2018.

The annual meeting during the American Royal was well attended and enjoyed by many. Last year educational and informational meetings were incorporated into the agenda. These sessions last for one hour and meeting attendees this year chose from six different sessions. It was possible to attend four of these educational forums during the time allotted. Additionally, the trade show for the meeting expanded and allowed those attending the opportunity to visit with many industry professionals. Plans are to continue this meeting platform and make refinements to better serve the membership. This is a great activity to attend to learn and communicate with breeders from across the United States. Mark this on your calendars for 2018.

While you have your calendar out also mark down a goal to market your Hereford genetics in a better way. Share these marketing opportunities with your customers who are utilizing your genetics. In late November a Hereford influenced calf sale was held in Vienna, Mo. Consignments to this sale numbered close to 500, and the support and help from the Patton family who owns the barn was excellent. Plans are to hold another sale this spring in the May or June time frame. It takes commitment from Hereford breeders to support this sale and more importantly offer another marketing opportunity for their clients.

We are also lucky to have a great opportunity for producers near Salem, Mo. Frank Barnitz with Net Worth Feeds provides an opportunity for producers to take their calves to the facility for backgrounding. Several producers have chosen this option and have enjoyed profitable results from this venture. The opportunity to co-mingle small groups of calves with other producers' calves to form a pot load of similar weight calves for marketing brings many advantages. Several producers have utilized this service and have taken it a step further and told their bull customers about this service.

In December a group met with the College of the Ozarks to start talks about a similar

program starting at the school. This brings about a great educational opportunity for students who might want to incorporate backgrounding in their future endeavors. While still in the talking stages, this may be another opportunity in the future for Missouri Hereford breeders.

The Missouri Opportunity sale in early December was a strong success. This might be the best set of Hereford seedstock that has ever been assembled for this sale. Great set of genetics and the breeders had the cattle ready to sale. It is always a worry when these cattle are selected in the summer, and then you wonder if the breeders will have them in shape five to six months later. This year the breeders really accomplished this and presented a tremendous set of cattle. The sale day crowd was large, active and stayed to the end of the sale. The meeting the night before was well attended as proven by a few tense moments of wondering if enough food had been ordered for the event. Everyone got a plate.

This sale has proven to be a good one for the breeders who choose to support and participate in this activity. If you have never consigned, I encourage you to. If you have consigned before and missed several sales, now would be a good time to reconsider, and for those consistent consignors, make your consignments better for the 2018 sale.

Denver 2018 was one to mark in the record books. The quality of cattle on the hill and in the yards was outstanding. The sale did over a million on 34 lots and the crowd at the sale left everyone talking in Denver—no matter your breed of choice. I would be remiss if I did not take this opportunity to thank the students at Missouri State University for their help in setting up and tearing down the sale arena. They were a big part of the group that took a bare showing floor and turned it into the sale arena in less than 45 minutes. A time lapse video of this activity was featured on the Hereford website.

This article is titled A Bit More. Reason is to challenge each Missouri breeder to do a bit more in 2018 for the benefit of their program, their customers and the Hereford breed. Hopefully, by reading this article a few ideas have been presented for this to happen. If I can ever be of help, or you would like for me to stop by your operation just give me a call—it would be my privilege.

*Joe Rickabaugh, AHA Director of Field Services*

## Preparations Underway for 2018 Field Day

District 6 will be hosting the 2018 Missouri Hereford Field Day September 8. Several breeder tours, speakers and door prizes will take place along with meals and evening entertainment.

Contact MHA director Rick Steinbeck at 573-680-0954 for more information on how you can get involved! Watch the website at [moherefords.org](http://moherefords.org) and the July Missouri Hereford News for more information.

Brief Summary for use in Cattle:  
See Package Insert for full Prescribing Information



**Antibiotic**  
100 mg of tulathromycin/mL

For use in beef cattle (including suckling calves), non-lactating dairy cattle (including dairy calves), veal calves, and swine. Not for use in female dairy cattle 20 months of age or older.

**CAUTION:** Federal (USA) law restricts this drug to use by or on the order of a licensed veterinarian.

### DESCRIPTION

DRAXXIN Injectable Solution is a ready-to-use sterile parenteral preparation containing tulathromycin, a semi-synthetic macrolide antibiotic of the subclass trimide. Each mL of DRAXXIN contains 100 mg of tulathromycin as the free base in a 50% propylene glycol vehicle, monothioglycerol (5 mg/mL), with citric and hydrochloric acids added to adjust pH.

DRAXXIN consists of an equilibrated mixture of two isomeric forms of tulathromycin in a 9:1 ratio.

The chemical names of the isomers are (2R,3S,4R,5R,8R,10R,11R,12S,13S,14R)-13-[[2,6-dideoxy-3-C-methyl-3-O-methyl-4-C-[(propylamino) methyl]-α-L-ribo-hexopyranosyl]oxy]-2-ethyl-3,4,10-trihydroxy-3,5,8,10,12,14-hexamethyl-11-[[3,4,6-trideoxy-3-(dimethylamino)-β-D-xylo-hexopyranosyl]oxy]-1-oxa-6-azacyclotetradecan-15-one and (2R,3R,6R,8R,9R,10S,11S,12R)-11-[[2,6-dideoxy-3-C-methyl-3-O-methyl-4-C-[(propylamino) methyl]-α-L-ribo-hexopyranosyl]oxy]-2-[[1R,2R)-1,2-dihydroxy-1-methylbutyl]-6-hydroxy-3,6,8,10,12-pentamethyl-9-[[3,4,6-trideoxy-3-(dimethylamino)-β-D-xylo-hexopyranosyl]oxy]-1-oxa-4-azacyclotetradecan-13-one, respectively.

### INDICATIONS

#### Beef and Non-Lactating Dairy Cattle

**BRD** – DRAXXIN Injectable Solution is indicated for the treatment of bovine respiratory disease (BRD) associated with *Mannheimia haemolytica*, *Pasteurella multocida*, *Histophilus somni*, and *Mycoplasma bovis*; and for the control of respiratory disease in cattle at high risk of developing BRD associated with *Mannheimia haemolytica*, *Pasteurella multocida*, *Histophilus somni*, and *Mycoplasma bovis*.

**IBK** – DRAXXIN Injectable Solution is indicated for the treatment of infectious bovine keratoconjunctivitis (IBK) associated with *Moraxella bovis*.

**Foot Rot** – DRAXXIN Injectable Solution is indicated for the treatment of bovine foot rot (interdigital necrobacillosis) associated with *Fusobacterium necrophorum* and *Porphyromonas levii*.

#### Suckling Calves, Dairy Calves, and Veal Calves

**BRD** – DRAXXIN Injectable Solution is indicated for the treatment of BRD associated with *M. haemolytica*, *P. multocida*, *H. somni*, and *M. bovis*.

### DOSAGE AND ADMINISTRATION

#### Cattle

Inject subcutaneously as a single dose in the neck at a dosage of 2.5 mg/kg (1.1 mL/100 lb) body weight (BW). Do not inject more than 10 mL per injection site.

Table 1. DRAXXIN Cattle Dosing Guide

Animal Weight (Pounds)	Dose Volume (mL)
100	1.1
200	2.3
300	3.4
400	4.5
500	5.7
600	6.8
700	8.0
800	9.1
900	10.2
1000	11.4

### CONTRAINDICATIONS

The use of DRAXXIN Injectable Solution is contraindicated in animals previously found to be hypersensitive to the drug.

### WARNINGS

#### FOR USE IN ANIMALS ONLY.

#### NOT FOR HUMAN USE.

#### KEEP OUT OF REACH OF CHILDREN.

#### NOT FOR USE IN CHICKENS OR TURKEYS.

### RESIDUE WARNINGS

#### Cattle

Cattle intended for human consumption must not be slaughtered within 18 days from the last treatment. Do not use in female dairy cattle 20 months of age or older.

### PRECAUTIONS

#### Cattle

The effects of DRAXXIN on bovine reproductive performance, pregnancy, and lactation have not been determined. Subcutaneous injection can cause a transient local tissue reaction that may result in trim loss of edible tissue at slaughter.

### ADVERSE REACTIONS

#### Cattle

In one BRD field study, two calves treated with DRAXXIN at 2.5 mg/kg BW exhibited transient hypersalivation. One of these calves also exhibited transient dyspnea, which may have been related to pneumonia.

NADA 141-244, Approved by FDA

To report a suspected adverse reaction or to request a safety data sheet call 1-888-963-8471. For additional information about adverse drug experience reporting for animal drugs, contact FDA at 1-888-FDA-VETS or online at <http://www.fda.gov/AnimalVeterinary/SafetyHealth>.

**zoetis**

Distributed by:  
Zoetis Inc. Kalamazoo, MI 49007

For additional DRAXXIN product information call: 1-888-DRAXXIN or go to [www.DRAXXIN.com](http://www.DRAXXIN.com)

TAKE TIME



OBSERVE LABEL DIRECTIONS

Made in Brazil

032908Z0  
Revised: February 2014



**OTHER BRD TREATMENTS WERE  
50% AS EFFECTIVE AS DRAXXIN<sup>®</sup>  
IN SEVERAL STUDIES.**



Treat bovine respiratory disease (BRD) the right way with DRAXXIN<sup>®</sup> (tulathromycin) Injectable Solution. DRAXXIN demonstrated 50% fewer re-treats and 50% fewer dead or chronic animals<sup>1</sup> versus competitive products in several large pen studies.<sup>2</sup> Which means your cattle stay healthier, and that helps keep your bottom line healthier, too.

Get the numbers on DRAXXIN at [draxxin.com](http://draxxin.com).

**IMPORTANT SAFETY INFORMATION:** DRAXXIN has a pre-slaughter withdrawal time of 18 days in cattle. Do not use in female dairy cattle 20 months of age or older. Do not use in animals known to be hypersensitive to the product. See Brief Summary of Prescribing Information on adjacent page and full Prescribing Information at [draxxin.com/pi](http://draxxin.com/pi).

**BRD SOLUTIONS  
FROM ZOETIS**

<sup>1</sup> Data on file, Study Report Nos. 1133R-60-05-491, A131R-US-12-028, 2132T-60-01-050, 1133R-60-02-376, 2132T-60-01-063, 1133R-60-03-388 and 11RGDRA01, Zoetis Services LLC.

<sup>2</sup> Data on file, Study Report Nos. 1133R-60-05-491, 1133R-60-05-492, 1133R-60-05-493, A131R-US-12-028, 2132T-60-01-050, 1133R-60-02-376, 2132T-60-01-063 and 1133R-60-03-388, Zoetis Services LLC.

All trademarks are the property of Zoetis Services LLC or a related company or a licensor unless otherwise noted. © 2017 Zoetis Services LLC. All rights reserved. DRX-00120

"God is desperate!" said ManHee Lee. "We need to look after each other, comfort and encourage each other. We always need to be awake. Always!"

When I read this quote, it struck me really hard. I think we need to wake up! I think that the Lord is trying to tell us that it is time to wake up. Most of us have heard the expression, "desperate times call for desperate measures." I think these are desperate times! I think God is taking desperate measures to wake us up. Just take a look at the headlines of any paper or listen to the news and you will know just how serious this situation is.

School shootings, patriotism, politics, sexual abuse, children being starved and tortured by their own parents and the list could go on. It is such a sad state of affairs our world is in. As a mother, I am terrified for my children and grandchildren. As a Christian, I have faith that God will prevail against the evil of this world. We all need to pull together to pray that the insanity and evil stops soon. Our children deserve it!

I know that I am one that procrastinates. We all tend to do that at some point, do we not? We tend to put off things and tell ourselves that we will do it tomorrow. I am also guilty of "not joining in" or letting others do the jobs that I am fully capable of doing because "I'm too busy" or "I'll do it next time." What if there isn't a next time? What if you can do it better? What if that person is busier than

you, but they felt like they had to do it because no one else would? That is what some of our organizations are coming to. A few people are taking care of the tasks. (Thank you to those that do!) We all need to step up, join in and help out! Our children are watching what we do (and don't do).

The Hereford Women of Missouri is made up of women that have the passion and desire to see our breed become one of the most successful breeds that exist by providing guidance and support to our Missouri Hereford breeders and the Missouri Hereford juniors. We need to come together and work together to do this! Our juniors are depending on us! I am challenging the Hereford women to join our organization if you haven't. If you are a member, I challenge you to get involved! There is no time like the present!

*Marijane Miller*, Hereford Women of Missouri Treasurer



Pictured (l to r) are 2018 Missouri Hereford Queen Jessica Huff, Memphis, Mo., and 2017 Missouri Hereford Queen along with national Miss Congeniality Rachael Bagnell, Slater, Mo.

## Hereford Women of Missouri Officers

**President** – Barbara Steiner, Union Star

**Vice President** – April Miller, Lee's Summit

**Secretary** – Tonya Bagnell, Slater

**Treasurer** – Marijane Miller, Lebanon  
Mail \$15 Hereford Women of Missouri dues to  
20500 Sioux Drive,  
Lebanon, MO 65536

**Queen Chairman** – Katherine Fuller, Weston

**By-Laws Chairwoman** –  
Gretchen Thompson, Rolla

### 2018 Missouri Hereford Queen Crowned

During the annual meeting of the Missouri Hereford Association held in Sedalia, Mo., Jessica Huff, a senior at Scotland County RI High School, Memphis, Mo., was chosen as the 2018 Missouri Hereford Queen.

Jessica is the daughter of Sean and Nichole Huff, and the granddaughter of LeRoy and Jane Huff, all of Rutledge, Mo.

Hereford cattle have been in her family for generations, and upon graduating this spring, Jessica plans to seek a Agribusiness degree at the university level. She wants to continue the family farm while bringing in the technological skills to advance the Hereford breed.

Throughout this year, Jessica looks forward to attending many events and running for National Hereford Queen.



## Beefy Goulash

### Ingredients

- 2 lbs ground meat, browned
- 1 can stewed tomatoes or canned tomatoes, chopped
- 1 can Rotel tomatoes with green chilies (I like the one with cilantro & lime juice best)
- 1 onion, chopped
- 1/4 cup sugar
- 3 tsp chili powder
- 4 cans water (or more as needed while mixture cooks)
- 2 cups bowtie, egg or macaroni noodles
- 1 tsp each of garlic powder, salt and pepper
- 1/4 block of large Velveeta Cheese (equals 1 cup chopped)
- 1/2 bell pepper or sweet banana pepper, chopped (optional)

### Instructions

1. Brown hamburger meat and drain.
2. Add tomatoes with liquid from can.
3. Add onion, sugar, chili powder, water, noodles and spices.
4. Bring to a boil and then down to a simmer. Cook on low, stirring occasionally, until noodles are tender.
5. Add Velveeta Cheese the last 10 minutes or it will stick.

May is Beef Month! This recipe works great to promote beef at your local grocery store or event. You can obtain handouts from Certified Hereford Beef along with your state's Beef Council to have on display with your beef samples. Grab a friend and enjoy this time of year as you spread the nutritional aspects of beef and tell our story as beef producers!



# The Cowman's Kind XXI

## BULL AND FEMALE SALE

Our 66th  
Year

**SELLING  
89 LOTS**

**MARCH 24, 2018**

Saturday • Noon (CDT)  
At the Farm • Lexington, TN  
Angus • Hereford • Charolais

**Candy Meadow Farms**  
is the home of these breed leading sires:

**C & L CT Federal 6Y • Gerber Anodyne 001A**  
**KCF Bennett Encore Z311 ET • NJW 33TB 100W Trust 167Y**

### Hereford Sale Bulls EPD Averages

CED	BW	WW	YW	MILK	REA	MARB	BMI	BII	CHB
+4.2	+2.0	+58	+94	+25	+0.54	+0.24	+\$29	+\$25	+\$33
Top 30%	Top 25%	Top 20%	Top 20%	Top 35%	Top 15%	Top 10%	Top 5%	Top 5%	Top 10%



CED	+4.8
BW	+1.2
WW	+48
YW	+80
Milk	+24
REA	+0.54
Marb	+0.36

### CMF 29X DOC HOLLIDAY 248D • 9/16/16

- ★ Sire: NJW 33TB 100W Trust 167Y
- ★ Dam: CMF 879S Lana 29X
- ★ Top 25% CED, 15% BW, 20% SC, 10% SCF, 10% CEM, 5% UDDR, 5% TEAT, 20% CW, 15% REA, 5% MARB, 5% BMI, 5% BII, 10% CHB



CED	+8.1
BW	+1.0
WW	+61
YW	+98
Milk	+25
REA	+0.93
Marb	+0.28

### CMF 123B DATABASE 284D • 10/6/16

- ★ Sire: Gerber Anodyne 001A
- ★ Dam: CMF 63U Sara 123B
- ★ Top 10% CED, 15% BW, 10% WW, 15% YW, 10% SCF, 35% MILK, 15% M&G, 5% CEM, 5% UDDR, 5% TEAT, 1% CW, 1% REA, 10% MARB, 5% BMI, 5% BII, 1% CHB



CED	+4.6
BW	+1.8
WW	+60
YW	+95
Milk	+23
REA	+0.18
Marb	+0.29

### CMF 64X DOCTOR 241D • 9/3/16

- ★ Sire: KCF Bennett Encore Z311 ET
- ★ Dam: CMF 512J Sara 64X
- ★ Top 30% CED, 20% BW, 15% WW, 15% YW, 20% SCF, 30% M&G, 20% CEM, 10% MARB, 20% BMI, 10% BII



CED	+5.6
BW	+0.4
WW	+48
YW	+80
Milk	+19
REA	+0.38
Marb	+0.20

### CMF 791R DOMINETTE 232C • 12/19/15

- ★ Sire: Gerber Anodyne 001A
- ★ Dam: CMF 509K Dominette 791R
- ★ Will calve before the sale to NJW 33TB 100W Trust 167Y.

EPDs as of 1/21/18



**Rob Helms (731) 571-8213**  
**Heath Helms (731) 614-3979**  
**Steve or Hayden Helms (731) 968-2012**  
**Email: candymeadowfarms@hotmail.com**

**565 CANDY MEADOW FARM ROAD • LEXINGTON, TENNESSEE 38351**

**Request Your Sale  
Book Today!**  
**www.JDHMK.T.com**



**JDH MARKETING SERVICES LLC**

**Jack D. Hedrick**  
**(904) 613-4261**  
**jdh@cableone.net**

**Auctioneer:** Eddie Burks TFL # 4123, TAL # 4990

To view sale book online go to [www.hereford.org](http://www.hereford.org).



Hello fellow Hereford breeders!

I hope that everyone had a wonderful winter and is ready for a busy spring and summer show season. It is already March, and that means time to be making decisions on who you will be taking to Junior National this summer, and making plans for other shows throughout the coming months. Here is an update of what is going on in the Missouri Junior Hereford Association (MJHA).

#### MJHA State Sale Meeting

The MJHA had a meeting at the Missouri Opportunity Sale in Sedalia, Missouri, December 3, 2017. We were blessed to have National Junior Hereford Association (NJHA) board members Taylor Belle Matheny and Hannah Williams present during the meeting. They talked about the Junior National Hereford Expo (JNHE) and the many opportunities there are for juniors to compete in contests outside of the show ring. These contests include public speaking, CHB Grill-Off, Hereford Bowl, Judging, Team Fitting, Photo and both team and individual sales. Members began signing up for contests during the meeting, but final contestants will be chosen at the Missouri Cattlemen's Association All-Breeds Junior Show in June. Next, the NJHA board members spoke about the Faces of Leadership Conference that will be held in San Francisco, California, next summer. They also discussed the NJHA Fed Steer Shootout, expressing the benefits of entering cattle in this relatively new contest.

#### State T-Shirt Sponsors

The MJHA would like to extend a huge thank you to Abrakadabra Cattle Company and Journagan Ranch/Missouri State University for supporting us by sponsoring our state t-shirts for the JNHE this summer.

*Jacob Toombs, Missouri Junior Hereford Association Reporter*

**2018 Junior National Hereford Expo**  
Plan to attend "All Aboard the Hereford Express" in Grand Island, Neb., July 1-7.

**Saturday, June 30**  
6 p.m. Barns open for setting up stalls — cattle may arrive into the outs, Cattle, Sheep and Swine Barns

**Sunday, July 1**  
6:30 a.m. Cattle allowed in barns  
8 a.m. National Hereford Women (NHW) board meeting  
8 a.m. Scholarship judges' breakfast  
8 a.m. NJHA director candidate interviews  
8:30 a.m. Scholarship interviews begin  
11 a.m.-5 p.m. People registration — pick up goodie bags and exhibitor packets, Show Office  
Noon. Illustrated speech  
Noon-3 p.m. Steer check-in, Five Points Bank Arena — all steers must be checked in by 3 p.m.  
Noon-6 p.m. Breeding cattle check-in, Five Points Bank Arena — all cattle in barns by 5 p.m. and checked in by 6 p.m.  
1 p.m. Newcomer orientation  
4 p.m. Queen's orientation  
6 p.m. Contest sign ups due to show office  
7 p.m. Director candidate roundtable dinner

**Monday, July 2**  
7 a.m. JNHE 5K Race, Fanner Park  
8 a.m. Hereford bowl written test  
9 a.m. Individual and team sales  
11 a.m. Great American CHB Grill-off Presentations  
1 p.m. NHW queen's tea, state queens coordinator orientation  
4 p.m. Sullivan Supply/Stock Show University Boot Camp  
5 p.m. Opening ceremonies, Five Points Bank Arena  
7 p.m. Tailgate Party

**Tuesday, July 3**  
8 a.m. VitaFerm T-shirt day  
8 a.m. Judging contest, Five Points Bank Arena  
11 a.m. Sullivan Supply/Stock Show University fitting demonstration, Five Points Bank Arena  
11 a.m. Entertaining speech contest (first preparation starts at 10:40 a.m.)

**Wednesday, July 4**  
8 a.m. Sullivan Supply/Stock Show University national showmanship contest, Five Points Bank Arena  
Ring 1: senior, intermediate and senior finals  
Ring 2: junior, preewe and pre-ewe  
Prior to Senior Finals SureChamp Nutritional Clinic, Five Points Bank Arena

**Thursday, July 5**  
8 a.m. Cow-calf pairs, bred-and-owned heifers, Ring 1: Five Points Bank Arena  
10 a.m. Bred-and-owned bulls, steers, Ring 2: Five Points Bank Arena  
Noon. Silent auction closes, Pinnacle Bank Expo Center  
5-7 p.m. Awards night dinner  
7 p.m. Awards night

**Friday, July 6**  
8 a.m. Begin owned heifer show, Five Points Bank Arena

**Saturday, July 7**  
8 a.m. Resume owned heifer show, Five Points Bank Arena

**Logos:** VitaFerm, JNHE, Grand Island, Nebraska

**Vertical Text:** ALL ABOARD THE HEREFORD EXPRESS

## Missouri Junior Hereford Association Officers

**President** – Anna Roth

**Vice President** – Shelby Bagnell

**Secretary** – Dalton Reynolds

**Treasurer** – Brooklyn Adam

Mail \$15 Missouri Junior Hereford Association dues to  
735 SE Wexford Rd, Lathrop, MO 64465

**Reporter** – Jacob Toombs

**Fundraising Chair** – Rachael Bagnell

**Directors** – Conner Bolch, Phillip Mueller, Isaac Rhode

**Advisors** –

**Jeff & Susan Rhode**

7765 NW Hwy NN, Stewartsville, MO 64490

816-261-4819 Jeff Cell or 816-261-4821 Susan Cell

Susan.rhode@yahoo.com

**Brad & Shannon Mueller**

2045 PCR 520, Perryville, MO 63775

573-517-2999 • Muellers29@yahoo.com

**Eddie & Mary Roth**

1178 NE Hwy J, Windsor, MO 65360

660-351-4126 • rothconcrete3@gmail.com

## The Power of a Deadline

If you're like me, nothing gets your blood pumping and motivation kicked into high gear like the last-minute rush of a deadline. Deadlines come in all types and sizes, and some have bigger consequences than others. Whether it's turning in your math homework or getting show entries submitted on time, one thing is the same—a deadline is not negotiable.

The next few months are chock full of deadlines for MJHA members and their families. Ownership deadlines, entry deadlines and sign-up deadlines for contests are available now for most of the shows and events you will participate in this summer. The best way to stay ahead is to add them to your calendar now, and set interim deadlines for yourself for anything that requires work or preparation. These include taking and printing photos for the photo contest, selecting a recipe for the CHB grill-off and submitting your topic for the Junior National Hereford Expo (JNHE) prepared public speaking contest, as well as others. Start now by reading publications and email updates from the American Hereford Association (AHA), as well as checking the AHA website for all JNHE deadlines. Do the same for any state or county shows you plan to attend.

Abraham Lincoln once said,  
*"Things may come to those who wait, but only the things left by those who hustle."*

Summer is just a few weeks away. The time to start planning and preparing for it is NOW!

*Jeff and Susan Rhode, Missouri Junior Hereford Association Advisors*



Find us on

Missouri Junior Hereford Association members leading the Pledge of Allegiance before the 2017 Missouri Opportunity Sale in Sedalia, Mo., on December 3.

## Congratulations to the 2017 NJHA Fed Steer Shootout Winners

Awards for the 2017 National Junior Hereford Association Fed Steer Shootout were awarded for numerous categories including overall Grand Champion Highest Retail Value Steer, Pen of 3 Purebred Herefords, Individual Purebred Hereford, Individual Commercial, Highest Average Daily Gain, Largest Ribeye and Highest Marbling Score during the 2018 AHA Annual Meeting and Conference Honorees Reception.

The Pen of 3 Commercials were awarded to a sister-brother duo of Madi Ridder, Marthasville, Mo., with the champion award, and reserve going to Ben Ridder, also of Marthasville, Mo.



# MISSOURI JUNIOR HEREFORD ASSOCIATION DEADLINES

## 2018 Junior Dues

The MJHA dues are \$15 per member for 2018. Dues must be paid by April 1, 2018, for members to serve as a state delegate at the JNHE, be a candidate for Outstanding MJHA Member, vote in elections or receive other awards from the MJHA. Dues can be paid by mail to Brooklyn Adam, MJHA Treasurer, at 735 SE Wexford Rd, Lathrop, MO 64465.

## Spring Scholarship Applications due April 1

Last year the Hereford Youth Foundation of America awarded \$160,000 in college scholarships to deserving NJHA members. Members can apply for 10 scholarships each spring, with applications due April 1. These scholarships will be awarded at the 2018 Junior National Hereford Expo in Grand Island, Neb. All scholarship applications along with letters of reference, transcripts and photos must be filled out and submitted Online through the Fluid Review Room at [www.hereford.org](http://www.hereford.org). Don't miss this opportunity to be recognized for your academic and Hereford youth involvement, as well as to help finance your college education.

## MJHA June Meeting

The MJHA will meet in conjunction with the Missouri Cattlemen's Association All-Breeds Junior Show on Saturday, June 9, 2018, at the Missouri State Fairgrounds in Sedalia. The meeting will be in the sale ring at the youth building, and will start 30 minutes after the completion of the Hereford show. All members and parents should attend.

## New Process for JNHE Contest Sign-Ups

Please remember to sign-up for pee-wee, junior, intermediate and senior showmanship, pre pee-wee showmanship and the judging contest Online at the time you submit your cattle entries for the 2018 Junior National Hereford Expo in Grand Island, Neb. The deadline to register for these contests is June 1.

For all other JNHE contests, MJHA members must sign up by June 1 by contacting Susan Rhode at 816-261-4821 or [susan.rhode@yahoo.com](mailto:susan.rhode@yahoo.com). All contest participants will be finalized before the MJHA meeting on June 9 in Sedalia.

States can enter only one contestant of each age division for the illustrated speech contest, one team of three members for the team fitting contest and one junior-age team of four members and one senior-age team of four members for the Hereford Bowl competitions. MJHA members that want to participate in these contests will be required to compete and qualify at the state level before going to the JNHE.

These state competitions will be Friday, June 8, 2018, during the Missouri Cattlemen's Association All-Breeds Junior Show in Sedalia. Times and locations for these competitions will be determined after June 1. An MJHA advisor will contact all members required to participate in these competitions with more information at that time. Please watch the MJHA Facebook page for additional updates.



Left: The Champion Pen of 3 Commercial Steers as part of the 2017 NJHA Fed Steer Shootout contest was awarded to Madi Ridder, Marthasville, Mo. Pictured (l to r) are Kevin Shultz, 2018 AHA president; Madi Ridder, Steven Green, NJHA chairman; Anna Dobson, National Hereford Queen; and Trey Befort, AHA director of commercial programs.

Right: Ben Ridder, Marthasville, Mo., receiving the Reserve Champion Pen of 3 Commercial Hereford Steers as part of the 2017 NJHA Fed Steer Shootout contest. Pictured (l to r) are Kevin Shultz, 2018 AHA president; Ben Ridder; Steven Green, NJHA chairman; Trey Befort, AHA director of commercial programs; and Anna Dobson, National Hereford Queen.

## NJHA Fed Steer Shootout Kicks Off With Group Two

Friday, Jan. 18, 2018 marked the start of the second group of steers for the National Junior Hereford Association's Fed Steer Shootout. Steers arrived at Gregory Feedlots, Tabor, Iowa, where they were sorted, worked and ultrasounded.

In the second contest for 2017 calves, 24 National Junior Hereford Association members will participate bringing a total of 91 steers from eight states.

The program, in its second year, focuses on youth education and industry experience through commercial cattle feeding, industry technology and performance measures such as feedlot and carcass merit.

Participants can enter steers into two different categories – purebred Hereford or commercial (must meet CHB live specifications). There is an individual division or a pen of three division. For each group, the steers must be born in the contest year and enter the contest between 600 and 750 lb.

The Fed Steer Shootout was designed to provide junior members with real-world experience and education. Educational events such as webinars and open house field days are hosted throughout the contest.

Winners of the contest will be announced at the 2018 AHA Annual Meeting and Conference Hereford Honorees Reception.

The contest would not be possible without the following sponsors: Gregory Feedlots, Inc., BioZyme Incorporated, GeneSeek, Allflex, UltraInsights Processing Lab Inc., Greater Omaha Packing Co. Inc., Zoetis, Hereford Research Foundation and IMMVC Superior Sciences.

"Numbers are up for group two," says Trey Befort, AHA director of commercial programs. "We are excited to start this second group and give even more of our NJHA members an opportunity to compete as well as gain industry knowledge and experience."

## WIDE RANGE

BOVINE UNLIMITED

Cody Washam

30487 Hwy J • Wentworth, MO 64873

Cell: 417.489.5450

Email: [cwshangus@hotmail.com](mailto:cwshangus@hotmail.com)





Turn Key Service

Authorized Independent  
ABS Representative

Certified A.I. Technician

Mass Breeding and Synchronization





# Gift that Keeps on Giving

In 2013 the Missouri Junior Hereford Association was brainstorming ideas to travel to the 2014 Junior National Hereford Expo in Harrisburg, Pa. The national junior show

was the farthest distance for the state of Missouri that it had been in several decades. Civil Bend Herefords, Maysville, Mo., had two children go through the program, Cory and Molly Wood. Parents Gary and Marilyn knew the financial obligation of taking juniors to the national event but also

the personal gain and development as well as teamwork skills of attending made this investment worthwhile for their own youth.

Civil Bend Herefords decided they would donate a heifer calf to the juniors of Missouri, consigning her to the Missouri Opportunity Sale, with all proceeds going to help fund the trip to Harrisburg the next summer.

"It was something Cory and I talked about," said Gary. "The money went to the juniors; we had no idea there were going to be a whole bunch of people buy her."

Other breeders stepped up expressing interest and the idea of a syndicate arose. Missouri Hereford Association president at the time, Jimmie Butler, saw the potential for this single

donation to bring more awareness to the junior programs and financial help to them in a big way. A group of the following purchasers came together to buy CB Lady Lass 3020 in the 2013 sale –

*Don Birk  
Doss Herefords  
Reed Farms  
Cody Lowderman  
Glen Grove Farms  
McMillen's Toothacre  
Lilac Hills Polled Herefords  
Open Range Cattle Co  
Falling Timber Farms  
Kaczmarek's 4K Herefords  
Bonebrake Farms  
Jody & April Miller  
Days Family Farm  
Aufdenberg Polled Herefords  
Rocking F Polled Herefords  
Journagan Ranch/MSU*



CB Lady Lass 3020 was donated by Civil Bend Herefords in the 2013 Missouri Opportunity Sale for the Missouri juniors traveling to the Junior National Hereford Expo.

Upon purchasing the heifer, the group decided to donate her back. The Wood family agreed they would take her back to the farm, breed her and sell her first progeny in the 2015 Missouri Opportunity Sale. A natural sire has been chosen each year and the female has been bred along and cared for with the rest of their cow own herd.

The Wood family didn't even attend junior nationals that next summer, but they knew the money was well spent for the many juniors from Missouri who were able to attend. Others helped fund expenses through donations of semen, trucking, and much more. Those farms and businesses included–

*Steiner family  
Glen Grove Farms  
Bacon Herefords  
Brian Littleton  
Cold Springs Farm Pet & Feed  
H&H Show Supplies  
Eddie Roth  
Jimmie Butler  
Dusty Miller  
Matt Reynolds*

In total, \$7,042.50 were raised for the Missouri juniors to attend the 2014 Junior National Hereford Expo. Funds helped provide fuel for five trucks and trailers hauling Missouri cattle and tack to Pennsylvania. For the show, feed, hay and show supplies were made available to these juniors. There was also food, soda and





Missouri Junior Hereford members at the 2017 Missouri Opportunity Sale © Rural Route Creations

The Wood family owns and operates Civil Bend Herefords, Maysville, Mo.

From left to right: Molly, Marilyn, Gary and Cory Wood



snacks provided for families in attendance that year. Today, progeny continue to sell from that original donated female in 2013.

CB Lady Lass 3020 has been a no-miss cow, breeding back every year at the same time.

"It is efforts put together by the Woods family and many other families and breeders across our membership that have made the Missouri Hereford Association and Missouri Junior Hereford Association as strong as they are today," said Matt Reynolds, MHA Secretary/Treasurer.

To date, the donation of that first heifer keeps on giving with a grand total of \$10,000 given to the Missouri Hereford Junior Association.

Lot 2 in the 2015 Missouri Opportunity Sale was CB MJHA Lady Lass 52, a February 13, 2015, heifer calf sired by C Extra Deep 3071. She sold to the Steiner Herefords, Union Star, Mo., for \$2,000. She was successful in her class at the Missouri State Fair, and raised a heifer calf that sold in The Elite 8 Sale last fall.

In 2016, Hanna and Emily Gregory, Houstonia, Mo., purchased 6012, a February 18, 2016, steer calf sired by H Go Game Changer 4323 ET for \$800.

At the last sale, Mike Ettinger, Sibley, Mo., purchased MJHA Lady 71E, a March 9, 2017, horned heifer calf sired by H Go Game Changer 4323 ET for \$1,500.

"We were just working cattle the other day," said Gary. "3020 is due back to calve at the same time again this spring for what will be another calf consigned to the Missouri Opportunity Sale."

Thank you to Civil Bend Herefords for their continued contribution to the Missouri Junior Hereford Association. The membership is truly grateful for the original donated heifer and the continued care of both her and preparation of her progeny to sell each year. This truly has been the gift that keeps on giving.

#### BioZyme Inc. Donates \$14,671 to Hereford Youth Through Feed the Future Program

Last September, BioZyme® Inc. partnered with the Hereford Youth Foundation of America (HYFA) to launch "Feed the Future" to support education and leadership programs for Hereford youth.

In 2017, BioZyme contributed \$1 to Hereford youth for every bag or tub of eligible VitaFerm® product bought by Hereford breeders with proof of purchase.

BioZyme Vice President Lisa Norton presented a \$14,671 check to HYFA Oct. 27 at the Hereford Honorees Reception during the American Hereford Association Annual Meeting and Conference in Kansas City, Mo.

"We are grateful to Bob and Lisa Norton for their continuous support," says Ray Ramsey, HYFA president. "HYFA would not be where it is today without their belief in our program."

BioZyme and HYFA will continue the Feed the Future program into 2018. Receipts for product purchased and turned in from Nov. 1, 2017, through Oct. 31, 2018, will count toward the 2018 contribution to HYFA.

During the next year of Feed the Future, BioZyme will include Vita Charge® Stress Tubs in its list of products eligible for the program. Other qualified products include Concept•Aid®, HEAT®, Cattleman's Blend™, VitaFerm 30-13% Protein Tub, Roughage Fortifier® and Sure Start® Pellet.



## "The Bald-Faced Truth About Hereford Genetics" Highlighted at the Cattle Industry Convention

The American Hereford Association (AHA) is committed to progressive cattlemen and helping producers meet today's challenges head-on.

During an AHA hosted event at the Cattle Industry Convention and National Cattlemen's Beef Association (NCBA) Trade Show on Feb. 1, AHA Executive Vice President Jack Ward, AHA Director of Breed Improvement Shane Bedwell and Certified Hereford Beef (CHB®) Operating Officer Amari Seiferman shared how Hereford genetics can maximize the value of the commercial herd by leveraging traits such as fertility, feed efficiency, docility and feedlot profitability.


"The AHA had another strong fiscal year in which the AHA reported increases in all aspects of business and a new strategic plan set in place, the Hereford breed is well-positioned to move the cattle industry forward," Ward said. "We have a membership committed to the commercial industry and creating value and efficiency throughout the production system."

"The AHA is leading the industry in genetic technology and stands poised for a stronghold in the DNA era," Bedwell said. "December 2017 was a groundbreaking moment for the AHA in terms of its genetic evaluation and breed improvement."

The AHA launched its first updated expected progeny differences (EPDs) and corresponding accuracies using the Biometric Open Language Tools (BOLT) genetic evaluation software on Dec. 4. Unique to the industry, this evaluation is fully supported by the Whole Herd Total Performance Records (TPR™) program. With more than 55,000 Hereford genotypes on record, the AHA offers a progressive genetic evaluation that will help identify the most profitable Hereford genetics for the commercial industry.

"Along with this genetic evaluation we released two new traits — Sustained Cow Fertility (SCF) and Dry Matter Intake (DMI)," Bedwell said. "With Whole Herd TPR, we were able to develop SCF which is a longevity and fertility trait blended together. DMI is an economically relevant trait on the cost side for feeding cattle. Both are big components of our updated profit indexes which include Baldy Maternal Index (BMI\$), Brahman Influence Index (BII\$) and Certified Hereford Beef Index (CHB\$)."


The AHA continues to build solid genetic data through the National Reference Sire Program (NRSP), which allows Hereford breeders to test young sires in real-world commercial settings. Unmatched in the beef industry, NRSP has tested hundreds of bulls. This robust test program allows Hereford to stand alone in the area of breed improvement. Because of the commitment of Hereford breeders participating in the program, young sires have been identified and proved for all traits of economic relevance.



# THE BALD-FACED TRUTH

## ABOUT HEREFORD GENETICS

It's obvious — Hereford-sired calves deliver a \$51 increase in net profit per cow, per year.\* Hereford genetics bring legendary hybrid vigor, improved fertility, feed efficiency and easy-handling docility to your program. Read the research, and see why Hereford heterosis pays off, at [Hereford.org/genetics](http://Hereford.org/genetics).



\*Compared to Anguscross calves. Source: Bailey, David A. and Easley, David R. Impacts of Crossbreeding on Profitability in Vertically Coordinated Beef Industry Marketing Systems. American Hereford Association. Retrieved from: <https://www.hereford.org/wp-content/uploads/2017/02/HybridAdvantageReport.pdf>. 02/10/2016

"We believe in the value of the NRSP and are working to continue to grow this program," Bedwell said. The cheapest and most profitable technology available to cattle producers is heterosis. The Circle A Ranch and Harris Ranch research projects both documented calves sired by Hereford bulls have a \$30 per head advantage in feedlot profitability, and females have a maternal advantage of 7% higher pregnancy rates when comparing the Hereford-sired females to Angus-sired females. Data from Circle A also proves a net income of \$51 more per cow per year and a significantly higher selling price for bred heifers.

"Heterosis adds value across the board," Bedwell said. "As we look to grow beef supply, one thing we can do is give commercial breeders tools to make good decisions capitalizing on breed complementarity. If we can take out some of the guesswork and let heterosis play its role, we're in a good spot as an industry. Hereford has proven itself over and over again through research and trait progress."

### Certified Hereford Beef

The CHB brand continues the tradition of marketing and promoting the Hereford breed's superior genetics through a specification and quality-based branded beef program established over two decades ago.

"We are in our 10th consecutive year of growth for the brand. We have increased our footprint not only domestically, but we're excited to have entered into the international market," Seiferman said. "The CHB brand allows not only a focus on a breed-specific program, but the competitive advantage of differentiation."

CHB® continues to expand product offerings under the brand label. "Because of consumer demand and awareness of the program, we have recently released and expanded our value-added line to include portion-controlled cut steaks, fully-cooked and deli items to enhance our

product offerings." In 2017, The introduction of CHB® Premium, a top Choice and Prime program, solidified the CHB brand's position in a competitive marketplace.

The CHB brand continues to position the program to increase market share and lead the industry with a premium brand of beef backed by Hereford genetics.

### AHA Programs

"The AHA continues to be engaged with the commercial industry and provide programs to our members and young breeders," Bedwell said.

The Hereford Advantage Program allows commercial breeders to identify genetically backed, high-quality Hereford and Hereford-influenced feeder cattle and to build premiums in cattle meeting the threshold. Cattlemen participating in this program will benefit from an expected progeny difference (EPD) ranking summary, added market exposure, genetic improvement in their herd and access to AHA resources.

The AHA is committed to offering young cattlemen real-world experience. In 2017 the National Junior Hereford Association (NJHA) created the Fed Steer Shootout — a program focused on youth education and industry experience through commercial cattle feeding, industry technology and performance measures. NJHA members house their steers at Gregory Feedlots, Inc., Tabor, Iowa, where they are custom fed and evaluated. Educational events such as webinars and field days are hosted throughout the contest.

The AHA, in collaboration with GeneSeek and Allflex, recently launched the Cow DNA Project to gain more genotypes on females. With these programs in place, the Association believes they are taking a stance that will allow them to progress in the industry.



# THE FOUNDATION

*for your cowherd*



**Glengrove Dereck D11**

Reg: 43742049 • BD: 3/29/16

Sire: CMF SAH 676M On Target 837S

Sire of Dam: KJ SPH 520E Right Time 192K



**Glengrove 936 Drummin D31**

Reg: 43776697 • BD: 9/1/16

Sire: Hyalite On Target 936

Sire of Dam: NJW 73S W18 Hometown 10Y

**These foundation  
bulls will take  
your cowherd to  
the next level!**



**Glengrove 200Z Duke D39**

Reg: 43778781 • BD: 9/8/16

Sire: Churchill Red Bull 200Z

Sire of Dam: THM Durango 4037



**Glengrove 200Z Dillon D40**

Reg: 43778785 • BD: 9/8/16

Sire: Churchill Red Bull 200Z

Sire of Dam: CMF CS Progression Y449

**Don't miss  
your opportunity!**

These bulls sell in the

**Show Me  
Classic Bull Sale  
April 7, 2018**

Roth Hereford Farm  
Windsor, MO



**Glengrove Derek D46**

Reg: 43778787 • BD: 10/1/16

Sire: LJR MSU GF Cold Fusion 52Z ET

Sire of Dam: KJ SPH 520E Right Time 192K



**K&W 67Z Jango D51**

Reg: 43871304 • BD: 10/13/16

Sire: Glengrove 11Z Kingston 067Z

Sire of Dam: Glengrove RH Icon X14

**QUALITY YOU CAN  
COUNT ON YEAR  
AFTER YEAR!**

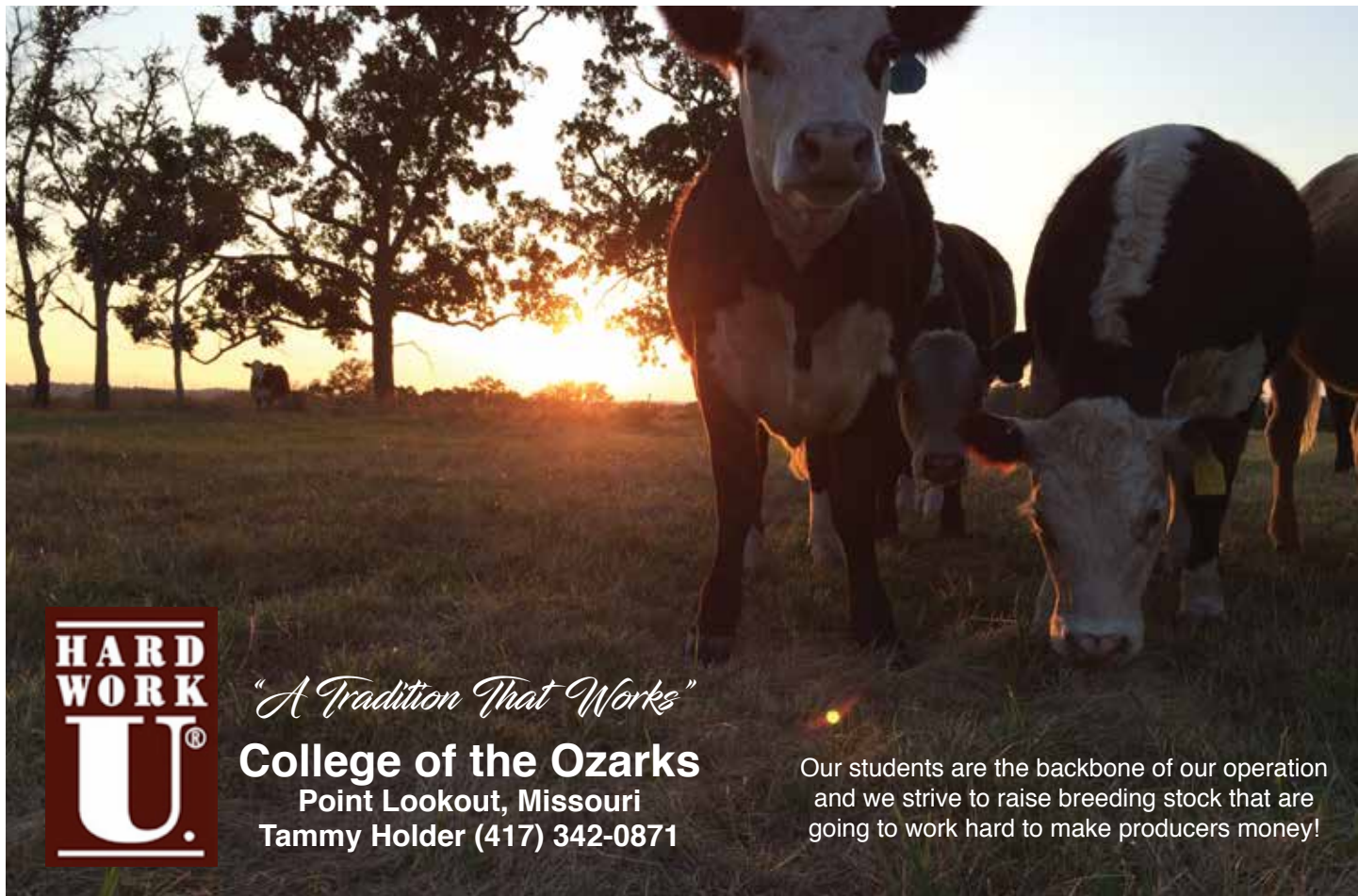


**Bob and Gretchen Thompson**  
12905 C.R. 4010  
Rolla, MO 65401

Home 573-341-3820  
Cell 573-368-9557

[www.glengrovetfarms.com](http://www.glengrovetfarms.com)





*"A Tradition That Works"*  
**College of the Ozarks**  
 Point Lookout, Missouri  
 Tammy Holder (417) 342-0871

Our students are the backbone of our operation and we strive to raise breeding stock that are going to work hard to make producers money!

#### AHA Office Move

The American Hereford Association will open for business Monday, Feb. 5, at its new headquarters location, 11500 NW Ambassador Dr., Suite. 410, Kansas City, MO 64153, in the Kansas City Northland.

The mailing address for the new location is  
**P.O. Box 901570, Kansas City, MO 64190.**

The AHA closed on the sale of its 1501 Wyandotte Street office building on Jan. 18 to KC Hotel Developers LLC.

"This is an exciting move for our members," said AHA President Kevin Schultz, Haviland, Kan. "Our new headquarters will be more accessible for Hereford breeders. We are looking forward to our members stopping in to visit with staff and conduct business. I think they'll enjoy its location near the interstate and improved parking. The new headquarters will also offer the flexibility needed to serve our growing membership."

The Hereford breed established its roots in Kansas City in 1920 when it became the first beef breed association to own its own headquarters building. The original office was located at 300 West 11th Street.

In 1953 President Dwight D. Eisenhower dedicated the second AHA headquarters at 715 Hereford Drive before the Association moved to the Wyandotte Street location in 1986.

Top: AHA statistics were released at the 2018 Cattle Industry Convention.

Below: On Feb. 5, 2018, the new AHA headquarters on Ambassador Dr. opened.

#### AMERICAN HEREFORD ASSOCIATION REVIEW

<b>117,645</b> Cows on inventory	<b>79,586</b> Total registrations	<b>44,232</b> Total transfers
<b>132%</b> Increase in global semen sales	<b>7,500</b> Adult and junior members	<b>55 MILLION</b> Pounds of CHB® sold



AHA Executive Vice President Jack Ward said, "The Hereford breed has strong ties with Kansas City. From our new location, the AHA will continue to provide exceptional service to Hereford breeders across the U.S."



**STOP**  
livestock marketing

Business Branding • Advertisements • Social Media  
 Web Design • Catalogs • Signage • Eblasts

[www.ruralroutecreations.com](http://www.ruralroutecreations.com)

Cassie Doran 403-907-5563  
 cassie@ruralroutecreations.com  
 Jocelyn Washburn 417-838-5546  
 jocelyn@ruralroutecreations.com

**Rural Route CREATIONS**  
 ONE-STOP MARKETING



# Central Missouri Polled Hereford Breeder's Association *111th Spring Sale*

**SATURDAY, MARCH 10, 2018 • NOON**  
**South Central Regional Stockyards**  
**Vienna, Missouri**

**Over 80 Lots, 70 Registered Lots, 12 Bulls, 12 F1 Commercial Lots**

Cow/calf pairs, open and bred heifers, show heifers and bred cows  
Daughters of Logic, Revolution, Rib Eye and Victor 719T

## *Consignments offered by:*

Bade's Polled Herefords, Augusta, MO  
Cavanaugh Farms, Cuba, MO  
Choate Polled Herefords, Pleasant Hope, MO  
Crider Polled Herefords, Bland, MO  
Richard Davis, Rolla, MO  
Day's Family Farm, Pilot Grove, MO  
Glengrove Farms, Rolla, MO  
Gregory Polled Herefords, Houstonia, MO  
Hagerman Farms, Syracuse, MO  
Hatchee Creek Farm, Belle, MO  
Trevor Hodges, Wooldridge, MO

Dennis Kauffman, Jefferson City, MO  
Kauffman Hereford Farm, Jefferson City, MO  
Mueller's Polled Herefords, Perryville, MO  
R & L Polled Herefords, Halfway, MO  
Rocking F Polled Herefords, Fayette, MO  
Andrew Scheulen, Linn, MO  
Robert Scheulen, Linn, MO  
Schrader's Polled Herefords, Wooldridge, MO  
Steinbeck Farms, Hermann, MO  
Valley View Farms, Morrison, MO  
Weinkein Herefords, Linn, MO



**View more information on**  
***www.missourihereford.com***

**For a catalog or more  
information contact  
Frank Flaspohler,  
Secretary/Sale Manager  
222 County Rd 402 • Fayette, MO  
660-537-4809 cell fwf@rockingf.com**





# Lilac Hill

Polled Herefords

**KEN AND CAROL STATEN**  
 163 HWY 5 • FAYETTE, MO 65248  
 660.248.2764 • 660.728.2764 CELL

#### National Hereford Queen Contest

During the 2017 American Royal National Hereford Show in Kansas City Oct. 29, Missouri Hereford Queen Rachael Bagnell, Slater, Mo., was selected as Miss Congeniality.

Seven young women from across the U.S. competed for the title of National Hereford Queen. The program is managed by the National Hereford Women. Queen candidates are evaluated on their involvement with and knowledge of the Hereford breed, behavior, attitude, appearance and interaction with producers, as well as their résumés and interviews. Judges look for a responsible, well-rounded young lady who is willing to spend an entire year traveling across the country to represent the Hereford breed to her best ability.

Miss Congeniality is chosen amongst the contestants.



Hereford royalty honored during the 2017 American Royal (l to r) are: Annah Dobson, Johnson Creek, Wis., 2016-17 National Hereford Queen; Abbygail Pitstick, South Solon, Ohio, 2017-18 National Hereford Queen; Megan Marion, Bainbridge, Ind., first runner-up; Devin Bollman, Bellaire, Texas, second runner-up; and Rachel Bagnell, Slater, Mo., Miss Congeniality.

## GREGORY POLLED HEREFORDS

Since 1932

### JD Gregory

19469 Houston Road  
 Houstonia, MO 65333  
 660-568-3559

### Kevin & Barbara Gregory

19620 Houston Road  
 Houstonia, MO 65333  
 660-568-3582 660-620-3585  
 gphfhereford@gmail.com

**Bulls for Sale!**  
 Come see us for  
 your next herd sire!



Visit Gregory Polled  
 Herefords  
 on Facebook



# JDB W017 A004 Good Reason D638

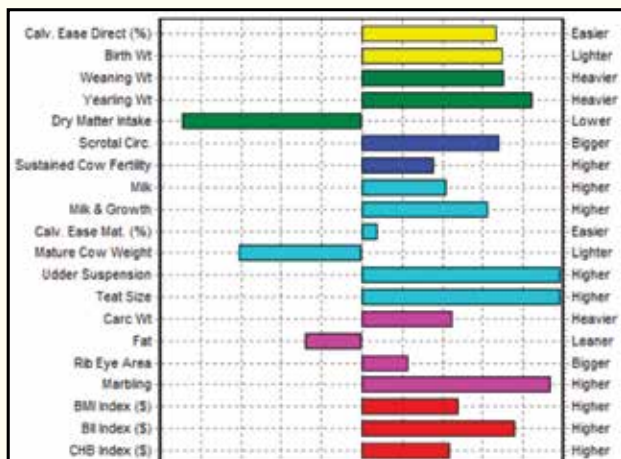
another Bellis example of

## “No Excuse Herefords”



### JDB W017 A004 Good Reason D638 (P43762743)

RRH MR FELT 3008 {CHB,SOD,DLF,HYF,IEF}  
JDB GHCC 3008 REASON W017 ET {DLF,HYF,IEF}  
JDB GHCC LADY LEGEND P098  
BOYD WORLDWIDE 9050 ET {DLF,HYF,IEF}  
JDB 9050 Y027 RACHAEL A004 ET  
JDB 4R REVA Y027 {DLF,HYF,IEF}



	Calv. Ease Direct (%)	Birth Wt	Weaning Wt	Yearling Wt	Dry Matter Intake	Scrotal Circ.	Sustained Cow Fertility	Milk	Milk & Growth	Calv. Ease Mat. (%)	Mature Cow Weight	Udder Suspension	Teat Size	Carc Wt	Fat	Rib Eye Area	Marbling	BMI Index (\$)	BII Index (\$)	CHB Index (\$)
EPD	+6.5	+1.3	+60	+101	+0.6	+1.2	+15.7	+26	+56	+2.2	+102	+1.60	+1.60	+69	+0.015	+0.40	+0.34	+\$25	+\$23	+\$30



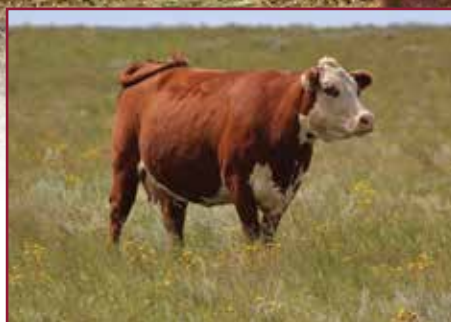
## J.D. Bellis Family

Jim D. & Carla Bellis  
19264 Lawrence 2170 • Aurora, MO 65605  
Jim cell: 417-466-8679  
JimBellis@missouristate.edu

Jonathan Bellis 417-440-1300  
Kevin, Jamie & Harper Johansen  
Kevin cell: 573-289-1061  
Joanna & Neal Wilkinson



# Introducing "RESOLUTE 128D"



**Dam is fully pigmented with perfect udder and great milk flow**

**SEMEN: \$40/ unit; non-cert**



**Travis & Sarah McConnaughey**  
Wasola, MO  
Phone: 417.989.0486  
Email: [t-mc2009@live.com](mailto:t-mc2009@live.com)  
[www.wmccattleco.com](http://www.wmccattleco.com)

**HILLS-GALORE 44Z RESOLUTE 128D**  
**Reg: 43866386 • 04/23/2016**

KCF BENNETT REVOLUTION X51  
RST X51 REVOLUTION 4102  
RST MS 1030 TOP SECRET 5128  
JB 531 BRAXTON CAL 605U  
**HILLS-GALORE 52R CALLI 44Z**  
HILLS-GALORE 32G MAY 52R

CED +4.8 BW +3.2 WW 66 YW 117  
Milk 28 SC +1.6 FAT -0.005 REA +0.97  
IMF +0.09 CHB \$38

**HOMOZYGOUS POLLED!**

**Outcross Pedigree**  
**Big Time Performance Sire**  
**Fully Pigmented**  
**Easy Flething**  
**Big Body Mass and Sound-Footed**



# MH 122L Prophet 5108 ET

P43619163 • Polled

DOB: 3-20-15

Sire: Ribeye 88X

Dam: Online



Rusty & Marjane Miller & Family  
Lebanon, Missouri

Rusty Cell 317-840-7811

Marjane Cell 317-341-3846

[millerherefords@yahoo.com](mailto:millerherefords@yahoo.com)

[www.millerherefords.com](http://www.millerherefords.com)

*Tracy*  
RRC

## SEMEN FOR SALE



Prophet pictured  
as a two-year-old

Owned with Butler Polled Herefords



## Sample of Bulls Selling



RHF 456B POWERLINE 7021E

Sire: ILR RED POWER 456B MGS: RHF GENERATION 8111U

## ORDER YOUR RAMPAGE SEMEN TODAY!

First calves are looking great! 17 calves have averaged 68 lbs. at birth. They are conservatively marked & pigmented.

**\$30/Straw**

10 Straw Min - Certificates \$75



CED +5.5  
BW -0.5  
WW +64  
YW +103  
M +26  
M&G +58  
CEM +6.6  
SC +1.1  
REA +0.41  
MARB +0.37

## 2018 Show-Me Classic Bull & Replacement Female Sale

Saturday, April 7th  
Noon

Held at Roth Hereford Farm,  
Windsor, MO

## ROTH HEREFORD FARM

1146 NE Hwy J, Windsor, MO 65360

Ed & Carol Roth

(660) 351-4127

croth745@earthlink.net

Eddie, Mary,

Lane, & Levi Roth

(660) 351-4126

Amy Phillips (816) 878-7305



## Triple Threat

Structure, Performance, & Eye Appeal



"Midge" REG: 42856472



"Karina" REG: 43545841

## Triple H Acres

The Jackson Family • Miller, Missouri  
Home: (417) 452-2297 Cell: (417) 827-1049  
triplehacres@live.com

Heifers, bulls & show prospects available!  
Give us a call and stop by for a visit!



# America's Convenient AI Brand

CRR 109 American Made 310

Churchill Red Bull 200Z

NJW 735 M326 Trust 100W ET

SULL MR Harley 5423C

H H Perfect Timing 0150 ET



CRR Catapult 109 x CRR Colorado 433  
BW WW YW MM M&G FAT REA MARB  
2.4 59 86 22 51 0.045 0.54 0.01

Churchill Sensation 028X x Golden Oak Outcross 180  
BW WW YW MM M&G FAT REA MARB  
0.3 60 98 34 64 0.005 0.68 0.19

KCF Bennett 3038 M326 x PW Victor Boomer P606  
BW WW YW MM M&G FAT REA MARB  
3.7 68 118 38 72 -0.035 0.92 0.27

JCS Showtime x Remball Online 122L  
BW WW YW MM M&G FAT REA MARB  
4.6 55 94 14 42 -0.045 0.44 0.01

CRR About Time 743 x HH Advance 319N  
BW WW YW MM M&G FAT REA MARB  
8-9.7 45 61 18 41 0.065 0.34 -0.06

H WCC/WB 668 Wyarno 9500 ET

R Leader 6964

CHEZ Dante 652D

WLB Winchester Powerball 27A

SULL TCC Mr Custom Made 340 ET



TH AWB SOP 16G 576 Tundra 63N x C-5 Pure Gold 98170  
BW WW YW MM M&G FAT REA MARB  
2.9 41 72 30 50 -0.035 0.19 0.13

Hyalite On Target 935 x MSU TCF Revolution 4R  
BW WW YW MM M&G FAT REA MARB  
1.3 66 109 28 60 0.075 0.45 0.15

R Leader 6964 x MSU TCF Revolution 4R  
BW WW YW MM M&G FAT REA MARB  
0.1 60 93 29 53 0.055 0.49 0.24

WLB Logo 83T 90X x Remball Alliance 500W  
BW WW YW MM M&G FAT REA MARB  
2.1 57 77 23 52 0.025 0.53 0.09

CRR About Time 743 x Arkinson Midas 72  
BW WW YW MM M&G FAT REA MARB  
2.5 43 70 23 44 -0.035 0.36 0.01

Showtime Fireball 734 ET

TH 60W 719T Victor 43Y

Purple Cobain 30D ET

WLB Logo 83T 90X

CRR 109 Upslope 611 ET



CHAC Mason 2214 x Remball Online 122L  
BW WW YW MM M&G FAT REA MARB  
6.5 59 99 24 54 -0.015 0.63 0.01

TH 122 719 Victor 719T x NJW FHF 0710 Tank 45P  
BW WW YW MM M&G FAT REA MARB  
0.1 47 61 22 45 -0.045 0.33 0.13

CRR 710 Catapult 109 x Lagrand Release 80P ET  
BW WW YW MM M&G FAT REA MARB  
2.3 69 108 27 61 -0.035 0.81 -0.08

WLB EX 10H 83T x WLB Global 72H 50S  
BW WW YW MM M&G FAT REA MARB  
1.2 58 78 20 49 0.035 0.60 0.08

CRR 719 Catapult 109 x DM BR Sooner  
BW WW YW MM M&G FAT REA MARB  
1.5 50 74 29 54 -0.005 0.30 -0.08

NJW 735 W18 Hometown 10Y ET

CRR 028X Screenshot 511

CHAC Mason 2214

WORR OWEN Tankeray Y79D ET

DeLHawk WRB Truth 713 ET



SFH Wonder M326 W18 ET x NJW P606 72N Daydream 73S  
BW WW YW MM M&G FAT REA MARB  
2.2 59 101 37 66 0.055 0.52 0.48

Churchill Sensation 028X x NJW 98S 100W Handshake 83Y  
BW WW YW MM M&G FAT REA MARB  
0.8 59 98 44 74 0.075 0.49 0.18

CRR About Time 743 x GK3 31 Grace 7100  
BW WW YW MM M&G FAT REA MARB  
5.1 57 92 25 53 -0.025 0.56 -0.09

NJW FHF 0710 Tank 45P x BR KLD Rose Marie 079 ET  
BW WW YW MM M&G FAT REA MARB  
2.9 55 96 24 51 -0.015 0.43 0.20

DeLHawk Kuhana 900R ET x Purple Tonic 10M  
BW WW YW MM M&G FAT REA MARB  
4.9 59 96 25 55 -0.005 0.62 -0.03

CRR 109 On Point 559 ET

JDH Victor 719T 33Z ET

H H Fast Forward 2268Z ET

TH 400U 32X Trump 206Z



CRR 719 Catapult 109 x DM BR Sooner  
BW WW YW MM M&G FAT REA MARB  
1.9 55 88 29 57 -0.005 0.34 0.08

TH 122 719 Victor 719T x AH Yankee 10S  
BW WW YW MM M&G FAT REA MARB  
1.0 64 103 31 63 0.015 0.69 0.18

866-356-4565  
www.cattlevisions.com

KJ IWH 33N Redown 4857a HH Advance 319N  
BW WW YW MM M&G FAT REA MARB  
-0.9 52 87 19 45 0.075 0.21 0.24

Haroldsons Trump 16R ET x TH 066F 45P Platinum 400U ET  
BW WW YW MM M&G FAT REA MARB  
4.2 75 120 38 75 0.035 0.63 0.03



## AHA Releases Bolt Genetic Evaluation

The American Hereford Association (AHA) released the first updated expected progeny differences (EPDs) and corresponding accuracies using the Biometric Open Language Tools (BOLT) genetic evaluation software Dec. 4. The new genetic evaluation also includes two new traits, Sustained Cow Fertility (SCF) and Dry Matter Intake (DMI), and updated profit (\$) indexes.

"It's long been our goal to provide Hereford breeders the most advanced and reliable genetic evaluation possible," says AHA President Kevin Schultz. "This new genetic evaluation gives us one of the best tools to identify breed-leading genetics at a faster pace than ever before."

Due to the industry-leading Whole Herd Total Performance Records (TPR™) program, in its 17th year, and the current 53,000 Hereford genotypes on record, the AHA is poised for a stronghold in the DNA era, making Hereford cattle even more predictable.

Last year the Association pursued a genetic evaluation overhaul to allow for better use of genomics in its evaluation.

"BOLT provides a more robust evaluation by calculating true accuracy on animals," says AHA Chief Operating Officer and Director of Breed Improvement Shane Bedwell.

Utilizing BOLT, all factors associated with contemporary group makeup will be accounted

for in the calculation of true accuracy. This genetic evaluation system moves away from a full multi-trait model, decoupling models to better estimate traits of interest. It also modifies contemporary group structure to allow for as much data as possible to affect the evaluation. In addition, BOLT utilizes a cutoff strategy which only includes animals born after 2001 and related by three generations of pedigree.

"A genetic evaluation backed solely by Whole Herd TPR data strengthens the evaluation and takes out selection bias that occurred pre-Whole Herd TPR," Bedwell says.

Hereford breeder Jack Holden, Valier, Mont., was a member of the advisory committee – comprising of cattlemen and the scientific community – who was tasked with reviewing the new genetic evaluation.

"The process of generating the new genetic evaluation was really outstanding, and I feel comfortable with where we're at now," Holden says. "BOLT will give us better, more accurate indications of genetic potential in our animals. We can make faster genetic progress to improve our herd."

### New traits and updated \$Indexes

Released with the new genetic evaluation are two new traits: SCF and DMI. The AHA's new SCF EPD is a prediction of a cow's ability to continue to calve from three years of age through 12 years of age, given she calved as a two-year-old. The EPD is expressed as a deviation in the proportion of the ten-possible

calvings to twelve years old expressed as a probability.

"The new SCF EPD is a powerful tool," Schultz says. "In a commercial cow herd, longevity and fertility are profit drivers. We're providing a new tool for that purpose."

Feed intake records from AHA research projects and breeder data collection have been analyzed in a genetic evaluation to predict DMI EPDs. Reported in pounds of feed consumed per day, this EPD characterizes genetics for intake, with a lower numeric value being associated with less feed consumed on a dry matter basis.

SCF and DMI will now be included in the AHA \$Indexes, along with other economically relevant traits (ERTs), including carcass weight (CW) and mature cow weight (MCW).

DMI and CW will be included in all three AHA \$Indexes to help predict the cost associated with feed inputs and measure the end-product pounds that are critical for profit.

"SCF will replace scrotal circumference as the predictor of fertility and be a large contributor to both maternal indexes," Bedwell says. "These ERTs into the profit indexes will provide a more robust and comprehensive selection tool for commercial producers to select Hereford bulls to be used on Angus based cows."

EPDs will be released once a week, an increase in frequency from the previous 10 times a year.

**PROVEN GENETICS**  
WWW.WOESSNERFARMS.COM

**WF**  
WOESSNER FARMS  
11975 COUNTY ROAD 3450  
ST. JAMES, MO 65559

**Herd Sires**  
WF 735 936 Limelight 4057  
WF 156T Maternal Bal Y1088A  
Innisfail Z311 13C

**A1 Sires**  
Hyalite On Target 936  
C&L CT Federal 485T 6Y  
MSU TCF Revolution 4R  
Churchill Sure Bet 4185 B ET  
MHPH 521X Action 106A

**Bulls and Females for Sale at Private Treaty**

MIKE WOESSNER  
(573) 578-4050  
MIKE@INV-REL.COM

MATT WOESSNER  
(573) 308-7006  
MATT@INV-REL.COM

**MCCORKILL**  
**FAMILY FARMS**

**Registered Herefords**

**Mike and Myra McCorkill**  
152 E Dade 92 • Greenfield, MO 65661  
417-637-5228 417-838-2073

**Andy, Jenn & Molly McCorkill**  
417-838-0583

**Brant, Erin and Knox Harvey**  
417-214-0313



# Consigned to the CMPHBA Sale

March 10, 2018 • Vienna, Missouri



## Grandview CMR Happy Queen 9263

P43007590 • DOB: March 11, 2009

Sire: CMR GVP Mr Maternal 156T

AI Bred June 14, 2017 to NJW 73S Hometown 10Y

## Also selling a heifer calf

### CPH 63A Eva 18E

P43863749 • DOB: September 2, 2017

Sire: NJW 135U 10Y Hometown 63A

Dam: CPH 023R Sophia 21Z

Will be halter broke by sale day

**CHOATE**  
Polled  
Herefords

Mike, Cathy & Julie

5373 South 226th Road  
Pleasant Hope, MO 65725

Mike: 417-880-3925

Julie: 417-298-5968

choateherefords@gmail.com

## L III Farms "Genetic Impact"

### Annual Online Bull and Heifer Sale

smartauctions

March 19 - 22 - SmartAuctions.Co



L III TFL C609 IMPACT 1714 (43767040)

- 1/2 interest; 1/2 possession

-Sire: EFBeeF Resolute CEO

-Maternal Sire: EFBeeF TFL U208 Tested X651

-IMPACT is one of three 2017 Hereford bulls

-Top 1% for WW, YW, CW, REA, MARB

-Top 5% or better for all \$Indexes

- YW: 1,140; REA 15.74; IMF% 5.54

-Videos and data for all lots at L3farms.com

-Each winning bid receives a  
FREE CASE pocket knife



15 bull/heifer progeny from:  
Resolute CEO, Tested X651, Tested A250,  
Resource 331



Tom, Siu and Clare Luthy

L3farms.com

TLuthy@mac.com

417-861-1755



# State Recognizes *Award* Winners



Left: 2017 MHA Hall of Fame Inductee - David Frazer, Frazer Polled Hereford Farm, Russelville, MO



Right: 2017 MHA Hall of Fame Inductee - Wayne Butler, Butler Polled Herefords, Republic, MO



2017 MHA Purebred Breeder of the Year - Abrakadabra Cattle Company, Columbia, MO



2017 MHA Commercial Breeder of the Year - Jim Finley, Norborne, MO



2017 Missouri Hereford Association Friend of the Association - Don & Kathy Sissel, Springfield, MO

2017 Futurity Show Winner - Shelby Bagnell, Slater, MO

2017 Futurity Show Winner - Dalton Reynolds, Huntsville, MO

2017 MO Opportunity Sale Consignor of the Year - Schu-Lar Polled Herefords, Le Compton, KS







2017 Missouri Hereford Association Show Bull of the Year –  
**Glengrove Farms**, Rolla, MO and  
**Butler Polled Herefords**, Republic, MO



2017 Missouri Hereford Association Show Cow-Calf Pair of the Year – **Mueller Polled Herefords**, Perryville, MO



2017 Missouri Hereford Association Junior Scholarship – **Dalton Reynolds**, Huntsville, MO



2017 Missouri Hereford Association Show Heifer of the Year – **Miller Herefords**, Lebanon, MO



2017 MJHA Friend of the Juniors – **Brad & Sherry Hurst**, Nevada, MO; **Jimmie & Andrea Butler**, Republic, MO; **David & (the late) Lisa Tribble**, Union Star, MO



2017 Missouri Hereford Association Board Member Recognition – **Mark Abramovitz**, Columbia, MO



2017 Missouri Hereford Association President Recognition – **Justin Sissel**, Elkland, MO



2017 Hereford Women Scholarship and Missouri Junior Hereford Association Scholarship – **Rachael Bagnell**, Slater, MO



2017 MJHA Outstanding Junior Members –  
**Peewee** – **Emmalee Mueller**, Perryville, MO • **Junior** – **Jacob Toombs**, Fair Play, MO  
**Intermediate** – **Taylor Miller**, Lebanon, MO • **Senior** – **Julie Choate**, Pleasant Hope, MO





# Sale Results

## Sale Index

- College of the Ozarks Hereford Production Sale
- Missouri Opportunity Sale
- Reynolds Herefords
- Show-Me Polled Hereford Classic

## College of the Ozarks Hereford Production Sale

Point Lookout, Mo. – November 25, 2017

15 bulls – \$39,950; average – \$2,663  
45 females – \$69,300; average – \$1,540  
67 lots – \$114,380; average – \$1,707

### BULLS

**COFO Sheyenne's Legacy C646 ET**, sired by TH 49U 719T Sheyenne 3X, to John S. Jordan, Edgar Springs, Mo., \$3,300

### FEMALES

**COFO Ms Cinch Queen A034**, sired by DRC 3238 King 4X, and a May bull calf to Garland Blacksher, Rogersville, Mo., \$2,650

**COFO Ms 719 Caddie C680**, sired by COFO 719T Toby 245, and a October bull calf to Wyatt Dill, Niangua, Mo., \$2,550

## Missouri Opportunity Sale

Sedalia, Mo. – December 3, 2017

48 females – \$152,350; average – \$3,174  
8 bulls – \$30,800; average – \$3,850  
56 lots – \$183,150; average – \$3,270  
6 embryos – \$1,200; average – \$200

### BULLS

**KACZ 108C Tradition 501C E214**, sired by Churchill Kickstart 501C ET, consigned by Kaczmarek 4K Herefords, Salem, Mo., to College of the Ozarks, Point Lookout, Mo., \$5,200

**KACZ 9144 Icon 501C E 328 ET**, sired by Churchill Kickstart 501C ET, consigned by Kaczmarek 4K Herefords, Salem, Mo., to David Heyen Farms, Medora, Mo., \$5,000

### FEMALES

**Schu-Lar 403 Vivian 16R U208 ET**, sired by EF Beef Foremost U208, consigned by Schu-Lar Herefords, Lecompton, Kan., to Josh Menzies, Marshfield, Mo., and a January heifer calf by Hyalite Resource 331, to Shoenberger Polled Herefords, Aurora, Mo., \$6,200

**Schu-Lar 201 Vivian 16R 4R ET**, sired by MSU TCF Revolution 4R, consigned by Schu-Lar Herefords, Lecompton, Kan., to Gary Johnson, Hendricks, Minn., and a February heifer calf by EF Beef x651 Tested A250, to Steve Wright, Prairie Du Chein, Wis., \$6,000

**Oaks Special Trust 917B**, sired by NJW 73S M326 Trust 100W ET, consigned by Shingle Oaks Polled Herefords, Waterloo, Ill., and an October bull calf to Dean McKibben, Liberal, Mo., \$4,900

**BB X083 Wyarnos Signature 1523**, sired by Huth Signature X083, consigned by Bonebrake Herefords, Springfield, Mo., to Triple H Acres, Miller, Mo., and a March heifer calf by CRR 109 Catapult 422, to Wooden School Ranch, Marshall, Mo., \$4,750

**AC Adalida 701E ET**, sired by CRR 719 Catapult 109, consigned by Asher Creek Cattle, Walnut Grove, Mo., to Cassie and Krista Allsheid, Waterloo, Ill., \$4,600

**Glengrove Crystal C15**, sired by CMF CS U408 Progression Y449, and an April heifer calf Glengrove 11X Kingston 67Z ET, consigned by Glengrove Farm, Rolla, Mo., to Kelsey Kwiatkowski, Louisburg, Kan., \$4,600

**OF Maggie Rose 225C**, sired by Schu-Lar 5N OF 9L 3008, consigned by Ockerhausen Farms, Warrenton, Mo., and a March heifer calf OF Maximus 221C to Jon Edwards, Alma, Mo., \$4,600

## Reynolds Herefords

Huntsville, Mo. – October 22, 2017

Auctioneer: Cody Lowderman

14 bulls – \$28,175; average – \$2,013  
27 females – \$54,165; average – \$2,006  
41 lots – \$82,340; average – \$2,008  
22 commercial heifers – \$40,475; average – \$1,840  
2 steers – \$2,00; average – 1,100

### BULLS

**RH Outcross 1661**, sired by RH Outcross 1431, to Jon Robnett, Laddonia, Mo., \$3,500

### FEMALES

**SF 0220 Vicki 3176**, sired by Boyd Masterpiece 0220, to Glengrove Farm, Rolla, Mo., and a January heifer calf by NJW 73S W18 Hometown 10Y ET, to Delaney Herefords, Lake Benton, Minn., \$5,000

**FTF Secret Sue 2412Z**, sired by FTF Top Secret 801U, to Trevor Hodges, Woolridge, Mo., and a February heifer calf by Abra 65Z Iron Man 19B ET, to Lenth Herefords, Postville, Iowa, \$3,750

**RH Friday 1702**, sired by Abra 0109 Mr Red 3B ET, to Jim Pfeiff, Purdin, Mo., \$3,700

**JWR 4035 Lindsey 051X**, sired by JWR L56 Round Up 071R ET, and a January heifer calf by Abra 65Z Iron Man 19B ET, to Lizzie's Polled Herefords, Jackson, Mo., \$3,400

## Show-Me Polled Hereford Classic

Windsor, Mo. – November 18, 2017

Auctioneer: Dale Stith

7.5 bulls – \$40,500; average – \$5,400  
58 females – \$229,500; average – \$3,957  
65.5 lots – \$270,000; average – \$4,122  
2 flushes – \$11,800; average – \$5,900

### BULLS

**RF 60T Stay With Me 57E**, sired by MPH Z3 Box Top C16, consigned by Reed's Farms, Green Ridge, Mo., to College of the Ozarks, Point Lookout, Mo., \$7,500

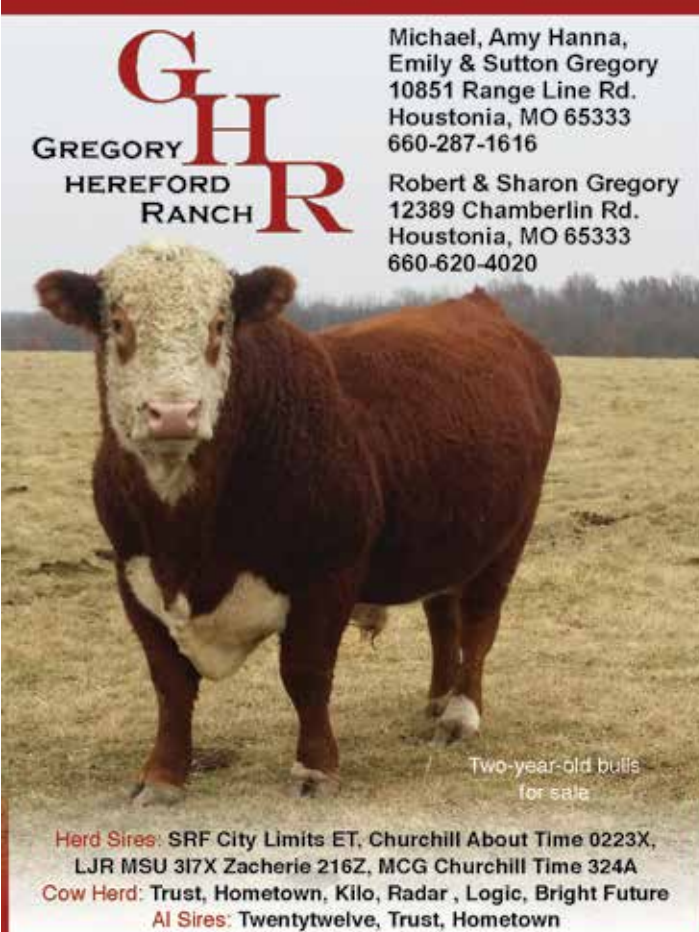
### FEMALES

**RHF 719T Apricot 3005A**, sired by TH 122 711 Victor 719T, consigned by Roth Hereford Farm, Windsor, Mo., to Joseph Skrivaneck, Caldwell, Texas, and a January bull calf by MHPH 521X Action 106A, to Prairie Creek Farms, Melvern, Kan., \$9,000

**RHF 220 Bell Star 4032B**, sired by Boyd Masterpiece 0220, consigned by Roth Hereford Farm, Windsor, Mo., to Cecil Jordan & Son, Dresden, Ohio, and a January heifer calf by PRF 743 Tank Time 312A, to Iron Lake Ranch, Athens, Texas, \$8,000

**CSR Master Lady 62A**, sired by Boyd Masterpiece 0220, consigned by Reed's Farms, to Cecil Jordan & Son, Dresden, Ohio, and a January heifer calf by MPH Z3 Box Top C16, to Feerer & Feerer Inc., Fargo, Okla., \$7,800

**RHF 200Z Lady In Red 5087C**, sired by Churchill Red Bull 200Z, consigned by Roth Hereford Farm, Windsor, Mo., to Wooden Shoe Farms, Blackfoot, Idaho, \$7,500



**GREGORY HEREFORD RANCH**

Michael, Amy Hanna,  
Emily & Sutton Gregory  
10851 Range Line Rd.  
Houstonia, MO 65333  
660-287-1616

Robert & Sharon Gregory  
12389 Chamberlin Rd.  
Houstonia, MO 65333  
660-620-4020

Two-year-old bulls  
for sale

**Herd Sires:** SRF City Limits ET, Churchill About Time 0223X,  
LJR MSU 317X Zacherie 216Z, MCG Churchill Time 324A  
**Cow Herd:** Trust, Hometown, Kilo, Radar, Logic, Bright Future  
**AI Sires:** Twentytwelve, Trust, Hometown





**270  
Bulls Sell!**

210 Angus Bulls -  
plus 20 Charolais  
Bulls,  
20 Hereford Bulls,  
and 20 Red Angus  
Bulls

*Calving Ease  
Growth  
Carcass*

**Call to request a  
sale catalog!**

- DNA Parent Verified
- Genomic Enhanced EPDs
- Complete Performance Data
- Genetics in Volume backed by Proven, Predictable AI sires

# Performance-Tested Bull Sale

**Saturday MARCH 3, 2018 Noon**

*Held at the Mead Sale Headquarters, west of Versailles, MO*



**MEAD 10Y HOMETOWN R084**

P43840181

BW 3.1; WW 61; YW 95;  
MM 29; M&G 60; MARB 0.17;  
REA 0.29; CHB\$ 26



**MEAD 755T VICTOR R104**

P43841182

BW 3.1; WW 65; YW 99;  
MM 34; M&G 66; MARB 0.14;  
REA 0.55; \$CHB 28



**MEAD 10Y HOMETOWN R447 ET**

P43840177

BW 3.1; WW 59; YW 96;  
MM 36; M&G 65; MARB 0.18;  
REA 0.47; \$CHB 30

*Quality in volume!*

*Missouri's #1  
Pathfinder Program!*



**MEAD  
FARMS**  
Since 1942

21658 Quarry Lane • Barnett, MO 65011  
Office (573) 302-7011 • Fax (573) 348-8325  
email: meadangus@yahoo.com  
www.meadfarms.com  
Alan Mead, Owner (573) 216-0210  
Jennifer Russell (573) 721-5512

Proven, Predictable Genetics *with* added Value

## Show-Me Classic Bull Sale

**Saturday, April 7th, 2018  
Noon**

*Held at Roth Hereford Farm  
Windsor, MO*



**PRF 4R ALL REVVED UP 623D**

Sire: MSU TCF REVOLUTION 4R

Calved: September 14th, 2016

REG# P43798838



**EF BONNIE M326 T113**

Dam of 623D - pictured Jan. '18 in  
her working clothes at over 10 yrs of  
age. Sons also sold in '16 & '17 sales.

**Also Selling Spring Yearling  
Bulls Sired by R LEADER 6964,  
NJW 73S W18 HOMETOWN 10Y ET,  
GG TIME 0124 408B**



**Phillips-Renner Farms**

Amy Phillips

(816) 878-7305 - Nothead1@aol.com

37144 Brady Creek Road, Richmond, MO 64085

www.prfherefords.com

Herdsmen: Angela Phillips

Cow checkers: Amanda, Tatum, & Taylor



## Early Pioneers in the State

One of Missouri's early breeders to have an annual production sale was Frazer Polled Hereford Farm of Russellville, Mo. The family made their sole income from the farm and dearly loved Hereford cattle.

W.H. (William Hallie) Frazer, Jr. and his high school sweetheart bride Lois Imogene united to establish the family business. The couple graduated from Hardin High School and made their permanent dwelling on the farm with their two children – Karen Joyce and David Wayne.

William, often called Junior, purchased the family's first horned Hereford cattle from J.C. Penney of Hamilton, Mo., in the early 1940s. The operation continued with the purchase a few years later. Traveling to Kearney, Neb., Junior acquired his first Polled Herefords from Orville Kulman. The cattle included the Goldmine bloodline which would be the cornerstone of the Frazer herd for many years to come.

David remembers his dad purchasing these first cattle and fondly recalls his father's love for the disposition and quality of the Hereford breed.

Soon after in the 1950s Frazer Farms started having their own Polled Hereford cattle sales, showcasing their herd as they raised top quality beef cattle. At the time, Jewett M. Fulkerson of Liberty, Mo., managed their sales as well as sales all over the United States. He was quoted saying, "Junior Frazer and his son, David, have consistently produced some of the greatest Polled Hereford cattle in the state and the country. They have bred and sold four of the champions in the last three state sales."

"The sales were always a full house," David recalls. "We lucked out most years in regards to weather having the sale in a tent during those early years and built a barn here at the farm in the 60s."

Saturday after Thanksgiving the family would host breeders from all over at their farm to sell several years' worth of selection and planning. The family would all pitch in to prepare for the big event. The cattle were all washed and clipped. There was a hired man at the time who helped as well. The women would be busy preparing the meal of barbecue beef. David's wife Marilyn remembers baking cookies and brownies and freezing them up ahead of time.

"Lois was a very good cook," said Marilyn. "I remember using that old Poll-ette Cookbook and selling those books at the state fair for our fundraiser."

Junior and his son David participated in many cattle shows and sales on the local, state and national levels.

on auction at the Missouri state sales. In the 60s, David remembers having both Grand and Reserve Grand Champion bull as well as Champion Heifer.

"Hereford cattle were such a huge part of my life," said David humbly. "I always liked them."

Marilyn concurred.

When the couple married in 1964, David was already very involved in Polled Hereford cattle. Growing up on a farm herself, Marilyn respected the way of life and learned to love the registered cattle. She always has thought they were "awfully pretty." While busy with the kids, Marilyn would help as needed preparing for the sales and shows.

By this time, several families were involved in the farm. David and his wife Marilyn were involved full-time with their children Jennifer, Julie, Jason and Brett. Junior's daughter Karen was also interested in the cattle and her along with her husband Paul McBee went into partnership with some cattle after they returned home from college.

They shared this passion with their family as David and Karen's children became involved in 4-H and FFA related activities. Both David and Marilyn agree that some of their fondest memories with their children included state and national Hereford shows and sales.



Frazer Hereford Farms, Stet, Mo., was inducted into the Missouri Hereford Association Hall of Fame. The family (from l to r) Karen (Frazer) McBee, Jason Frazer, Marilyn Frazer, David Frazer, Jennifer Frazer received the award from and Glen Waters of the Missouri Hereford Association.

In addition to having their own sales, the Frazer cattle were also exhibited and placed



Left: Jennifer Frazer showing the Grand Champion Bull at the 1978 Missouri State Fair; Middle: Jennifer and Julie Frazer with Jennifer's show heifer Winnie at the Missouri Cattlemen's All-Breed Junior Show; Right: David Frazer showing the 1968 Champion Bull at the Missouri Polled Hereford State Sale with father Junior accepting the award.





Top: W.H. Frazer, Jr. (right), nicknamed Junior, along with son David (left) were in partnership with Frazer Hereford Farms.

Bottom: The Frazer family of Stet, Mo., includes (front row from l to r) David Frazer, Marilyn Frazer; (back row from l to r) son Brett Frazer, daughter-in-law Misty Frazer, granddaughter Hallie Frazer, son Jason Frazer, and daughter Jennifer Frazer.

“We always showed cattle at the Missouri State Fair and local fairs around us,” said David. “The American Royal was also a highlight as I remember the competition was stiff there, but the kids always seemed to do very well.”

Jennifer and Julie attended several Junior Nationals over the years including Springfield, Ill., and Oklahoma City, showing both

remember tricks being played at the shows, as we always had a lot of fun.”

Today, Jennifer is a nurse in Kansas City, Jason is a banker in Hardin and preacher in Stet and Brett is in college at Chicago seeking a doctorate in psychology. At age 21, Julie was tragically lost in a car accident.

cattle they raised and sometimes purchasing heifers as well.

“There was lots of camaraderie amongst the juniors in the state, and the kids made a lot of friends,” David said with a smile. “When I was a kid showing, I, too,

Jason and his wife Misty have a daughter, Hallie. The family name is very fitting, as Hallie already seems to like animals at the age of two, and David believes she does light up when she looks at cattle.

Over the years, the farm had a cow herd dispersal at the farm. More recently, the entire cow herd was sold.

David is unable to physically be involved with the cattle today due to a disease. While he still very much likes Herefords, David’s nephew Shawn McBee now takes care of the farm and runs his own operation on the family’s land.

The family’s decades of Hereford wisdom, handwork and passion do not go unnoticed. Frazer Polled Herefords were pioneers in the state of Missouri and had early production sales before most operations were even in existence. At the 2017 Missouri Hereford banquet, the family was inducted into the Missouri Hereford Association Hall of Fame.

In 1973, Jewett added of the family that, “The Frazer herd has long been one of the leading herds of the breed. The Frazer’s are practical, down to earth cattle people, and they have rendered through the years a great service to the industry.”

## 2018 BREED LEADERS

### Revved Up and Ready to Go



**REVVED UP**

29HP0928

MOHICAN BAR STAR **REVVED UP** 78A

AHA 43386234

### Elite Calving Ease, Maternal and Phenotype



**DOMINO 1109**

29HP0843

PYRAMID 3027 **DOMINO** 1109

AHA 43185506

To add these breed leading genetics to your herd, contact your local ABS Representative or call **1.800.ABS.STUD**

©2018 ABS Global, Inc. • 1525 River Road, DeForest, WI 53532 • 608-846-3721 • [www.absbeef.com](http://www.absbeef.com)





## Membership Update

### Jackson Announces Hometown Heroes

Hometown Proud recognizes Jackson, Mo., citizens who are proud of their town taking pride in their communities, schools, churches, civic organizations and businesses.

MHA director Darrell Aufdenberg was one of five recipients of the award this year. Aufdenberg has spent his life in Jackson supporting local agriculture through his career, community involvement and personal farm, growing up in the area and spending 23 years working at a local farm service center. For the last 20 years, Darrell has been an agri-business lender, recently becoming vice president at Alliance Bank.

Aufdenberg is also involved with the local 4-H groups, and the SEMO District Fair. He also runs the Jackson Area Chamber of Commerce's annual Ag Tour every July. The forty year old event is the longest running agriculture tour in the state.

Through his passion of raising cattle, Aufdenberg enjoys relaxing at the farm, but does not plan on slowing down anytime soon.

Jackson mayor Dwain Hahs said, "This civic pride defines our community and is the result of our citizens who step forward to do more than expected," when describing this years' award winners.



Darrell Aufdenberg, vice president at Alliance Bank, receives Jackson citizen award. © Jay Forness

### Missouri Juniors Receives Jack & Donna Vanier Family Scholarship

Ten National Junior Hereford Association (NJHA) members were awarded a \$10,000 Jack & Donna Vanier Scholarship Oct. 28 at the American Hereford Association (AHA) Hereford Honorees Reception during the AHA Annual Membership Meeting in Kansas City, Mo. These scholarships were 10 of 23 awarded through the Hereford Youth Foundation of America (HYFA) totaling more \$142,000.

The Vanier Family of CK Ranch in Brookville, Kan., donated 10 scholarships totaling \$100,000 to youth who demonstrate a commitment to higher education and who have overcome obstacles in their lives. Two Missouri juniors received this prestigious scholarship.

Shelby Bagnell, Slater, Mo., is a sophomore at the University of Missouri-Columbia majoring in agricultural education. She plans to pursue a career as an agricultural education instructor to improve the education of agriculture in future generations.

Britney Adam, Plattsburg, Mo., is a sophomore attending Iowa State University with a concentration in agricultural studies. She currently serves on the Missouri Junior Hereford Association board and is a recipient of the American FFA Degree.

Ellen Mason, Miller, Mo., is a senior attending Iowa State University where she is pursuing a degree in agricultural engineering and is a member of the livestock judging team.



Above: Ten outstanding NJHA members received a \$10,000 Jack and Donna Vanier Family Scholarship Oct. 27 at the 2017 Hereford Honorees Reception during the American Hereford Association Annual Meeting and Conference in Kansas City, Mo.

From left to right: Katie Colyer, HYFA board of directors; Bruce Everhart, HYFA vice president; Brooke Hinojosa-Sidwell, Carr, Colo.; Jeremy Tjardes, Gibson City, Ill.; Kelsey Stimpson, Parma, Idaho; Miranda Stotz, Skiatook, Okla.; Mason Blinson, Buies Creek, N.C.; Rachael Buzanowski, Pompeys Pillar, Mont.; Abby Repenning, Mitchell, S.D.; Ellen Mason, Miller, Mo.; Tyler Eldred, Bozeman, Mont.; Shelby Bagnell, Slater, Mo., and Jill Bielema, HYFA board of directors.

[www.moherefords.org](http://www.moherefords.org)

The official website of the Missouri Hereford Association

## Marriage Announcement

Sabrina Abramovitz and Tim Opitz were married October 28, 2017 at Sacred Heart Catholic Church, Columbia Mo. Sabrina is the daughter of Mark Abramovitz and Terry Elwing, Columbia Mo. Tim is the son of Jerald and Marilyn Opitz, Omaha, Neb. They celebrated with more than 300 family members and friends at the home of AbraKadabra Cattle Company. The following week was spent honeymooning in Aruba.

The bride's family (l to r) are Logan, Ellie and Brianne Bishop, Tim Opitz, Sabrina Abramovitz, Terry Elwing and Mark Abramovitz



## Birth Announcement



Dalton Louis Dorran was born November 3 in Calgary, Alberta, Canada. He's welcomed into this world by his parents Ryan and Cassie of Didsbury, Alberta, who own and operate Dorran Marketing Inc. Dalton weighed five pounds and 15 ounces and brings his parents tremendous happiness. In the fall, he attended 9 production and consignment sales and looks forward to attending many bull sales this spring!





# Midcontinent Livestock Supplements

**PROVEN PERFORMANCE**

**M**eeting your  
**L**ivestock  
**S**upplement needs!

## ***MLS #1 Hi Performance***

- ▶ For cattle needing both protein and mineral supplementation
- ▶ Balanced concentration of protein, B-vitamins, trace minerals and energy
- ▶ Contains *aspergillus oryzae* for more complete roughage breakdown

## ***MLS #3 Energy Cake***

- ▶ Great source of protein plus *aspergillus oryzae* for enhanced forage breakdown
- ▶ High Energy to extend dry fall grass, corn stalks or low quality hay feeding
- ▶ Nine B-vitamins, added vitamin C, in an all natural protein supplement



**mlstubs.com**

## ***MLS #15 Hi-Energy Plus***

- ▶ Protein, additional energy, and organic trace minerals
- ▶ High energy for beef cows on low quality hay, dry grass or stalks
- ▶ Labor saving, cost effective replacement for cake or range cubes

Joseph Woods  
660-341-5413

Jeff Anslinger  
816-244-7340

Gary West  
731-335-3023



***2017 Reserve Champion Hereford Senior Yearling***

CJB Cassie C68 - P43679207 and calf CJB Cruiser E103

**Tri-L Polled Herefords**

19417 NE 178th Street • Holt, Missouri 64048

816-628-5571 Home  
816-421-4075 Business  
816-797-8020 Cell

Jack and Alicia Lewis  
Katherine Fuller  
Conner Bolch



## Events & Deadlines

### MARCH

- March 3** Mead Farms Performance-Tested Bull Sale  
*Versailles, Missouri*
- March 10** Central MO Polled Hereford Breeders Association 109th Spring Sale  
*Vienna, Missouri*
- March 17** Falling Timber Farm Bull & Female Sale  
*Marthasville, Missouri*
- March 19-22** L III Farms Genetic Impact Online Bull & Female Sale
- March 24** Arkansas Bull Sale  
*Heber Springs, Arkansas*
- March 24** The Cowman's Kind XXI Bull & Female Sale  
*Lexington, Tennessee*
- March 26** Southwest MO Performance Test Bull Sale  
*Springfield, Missouri*

### APRIL

- April 1** Spring HYFA Scholarships & Awards Deadline
- April 1** Missouri Hereford Association dues deadline (to be eligible to receive any award at the membership banquet)
- April 1** Missouri Junior Hereford Association dues deadline (see eligibility on page 15)
- April 7** Show-Me Classic Bull & Replacement Female Sale  
*Windsor, Missouri*

### MAY

- May 1** Nomination Deadline for Missouri Opportunity Sale
- May 1** Missouri Hereford Association dues deadline (to be listed on the Association website)
- May 1** JNHE Early Bird Entry Deadline

### JUNE

- June 1** JNHE Final Entry and Ownership Deadline; Showmanship and Judging Contest Sign-Up Deadline
- June 8** Missouri Junior Hereford Association JNHE qualifying contests  
*Sedalia, Missouri*
- June 9-10** 36th Annual MCA All-Breeds Junior Show; MJHA Meeting to follow 30 minutes after Hereford Show  
*Sedalia, Missouri*
- June 15** Ozark Empire Fair Entry Deadline
- June 30** Missouri State Fair Entry Deadline

### JULY

- July 1-7** Junior National Hereford Expo  
*Grand Island, Nebraska*

### SEPTEMBER

- Sept 7** Missouri Hereford Association Board Meeting  
*near Sullivan, Missouri at 8 p.m.*
- Sept 8** Missouri Hereford Field Day  
*District 6*



Insure Your Most Valuable Livestock!

**BULLS • DONORS • HEIFERS  
SEMEN TANKS • SHOW CATTLE**




**CASSIE DORRAN 403-507-5953**  
cassie@ruralroutecreations.com

## Leading Beef Breed Associations Partner to Release "Premium Red Baldy" Program

Two of the largest beef breed associations in the U.S. have teamed up to offer commercial cattlemen a groundbreaking, genetically verified program to improve their bottom line. The Red Angus Association of America and the American Hereford Association are proud to introduce the "Premium Red Baldy" program, designed to capitalize on the best traits from both breeds while developing supreme quality commercial females.

RAAA CEO Tom Brink and AHA Executive Vice President Jack Ward announced the new initiative at the 2018 Cattle Industry Convention and NCBA Trade Show in Phoenix.

At The Red Reception, a special breeder's event held to commemorate the joint venture, Brink said, "Both Red Angus and Hereford are committed to the success of commercial cow-calf producers, and we believe the pathway to profitability begins with having the right genetics in the cow herd. This new program will help producers access genetically verified females that are packed with heterosis and ready to go to work on farms and ranches all across the country. It all starts with the right

cow traits, and Premium Red Baldy females will excel in that regard."

"AHA is honored to join Red Angus to introduce the Premium Red Baldy program that identifies genetically superior F-1 females," Ward said. "The AHA and RAAA are the only two breed associations that implement a mandatory whole herd reporting performance program which gives strength and reliability to their respective genetic evaluations."

Premium Red Baldy is a tagging program designed to take advantage of hybrid vigor by maximizing the best traits of both breeds and providing commercial producers with premium replacement females. This program, targeting only heifers, will generate females for the commercial producer by emphasizing longevity, fertility, adaptability and efficiency. This partnership of powerhouse breeds promises to elevate the best genetics from each, and will build better F1 females to further the beef industry.

To take advantage of the program, producers must verify that eligible females are sired by

AHA or RAAA registered and transferred bulls. The bulls must also rank in the top 50 percent of their respective breed for AHA's Baldy Maternal Index (BMI\$) or RAAA's Herdbuilder Index (HB). Targeted breed percentages will range from 25 – 75 percent for both breeds, with the balance being the alternate breed.

Cattlemen and women should call their respective breed association office to verify females and order Allflex™ tags for the program. Tags will be shipped to the producer upon completion of a satisfactory phone interview and only enough tags will be shipped to match the number of red bodied and white or brockle-faced females born on the operation. Premium Red Baldy is not a Process Verified Program (PVP) through the USDA.

For more information about the Premium Red Baldy program, please contact Trey Befort, AHA Director of Commercial Programs at [tbefort@herefordbeef.org](mailto:tbefort@herefordbeef.org) or Chessie Mitchell, RAAA Tag Program Coordinator at [chessie@redangus.org](mailto:chessie@redangus.org).



# COWCO, INC.

## LIVESTOCK EQUIPMENT

Cattle Handling Equipment, Squeeze Chutes, Alleyways, Crowding Tubs & Complete Working Systems



### 895 Basic System

In addition to offering our own line of livestock equipment, we continue to distribute complimentary lines of equipment from other quality manufacturers.

Missouri Representative: Rick Washam - Pierce City 417-489-5455

1-800-240-3868 [www.cowcoinc.com](http://www.cowcoinc.com)



#### Key Site Elements

- 1 Water Resources Center and South Platte Riverfront
- 2 Stockyards/Event Pavilion
- 3 CSU Equine Sports Medicine Clinic
- 4 Equestrian Center
- 5 Livestock Center
- 6 NWC Transit Station
- 7 Shared User/TOO Parking Structure
- 8 Livestock Exchange Building/Plex Space
- 9 Trade Show/Exhibition Hall
- 10 New Arena
- 11 CSU Center
- 12 Colorado Commons
- 13 Stadium Arena Market
- 14 Coliseum Redevelopment
- 15 Forestry Transportation Museum
- 16 Northside Park/Heron Pond
- 17 Globeville Landing Park
- 18 Future Transit Oriented Development

National Western Center Partners



For more information on the National Western Center please visit: [denvergov.org/NWCC](http://denvergov.org/NWCC)



Top Left: The current National Western Stock Show grounds will be expanding north for the new National Western Center campus.

Top Right: With completion expected by 2023, the National Western Center Transit Plaza at 49th Avenue and Brighton Boulevard will be one of the major front doors to the new campus. Pedestrian connections will tie the station to the new Livestock and Equestrian facilities.

Bottom Right: The Stockyards Auction Arena and Show Arena will become the central focus point of the yards. The Livestock Center is in the background looking Southeast.





# Historic Heritage *with an Innovative Future*

For more than 110 year, the National Western Stock Show (NWSS) has been a meeting place for cattlemen all over the world. Hereford heritage is deeply rooted into the event and fairgrounds, hosting the national Hereford show every year.

The NWSS dates to the origins of Denver, and with the rail lines crisscrossing through the city, a booming cattle industry thrived off the central location of Denver for trade. In 1881, the Denver Union Stock Yard Company was founded as a central unit of sale and commerce. The bustling livestock market brought about the necessity of structures such as stock pens, an elevated viewing walkway and an animal transport bridge as train loads of livestock rolled into the site seven days a week, 24 hours a day. Packing plants quickly grew in the area experiencing huge financial success.

The first “official” Western Livestock Show, hosted by the Denver Livestock Exchange, was held under a circus big top tent in 1906. Some of the highest priced bulls in the country would sell at what became an annual event flooded with spectators from all over the world. By the 1950s the use of the Yards for cattle trade on a daily basis began to diminish as the city grew and smaller feedlots began to favor cattle producers. But, although the grounds

Hereford bulls being evaluated in 1907 at the second Western Livestock Show hosted by the Denver Livestock Exchange on what is known today as the future National Western Center campus.

were’t used daily, the NWSS event grew even bigger.

While The Yards has a deep history, for many years it has slowly diminished in the ability to comfortably house cattle and people during the 16-day NWSS event every January. The outgrown facility since 2011 hosts what is known as the “Super Bowl” of stock shows. Several species have limited amount of animals that are chosen by lottery because there is simply not enough space. The buildings are old and don’t provide the state-of-the-art design of other exhibition facilities across the country.

The National Western Center (NWC) has been years in the making of a reimagined master-planned campus nearly doubling the current fairgrounds in Denver, Colorado. Land acquisition, rail consolidation and site remediation are the three priorities of creating the new campus, which will take place in various phases.

The Center is a shared vision between founding partners from the City and County of Denver, Colorado State University, the



Western Stock Show Association, the Denver Museum of Nature and Science, and History Colorado. These organizations, combined with input from local community members, continue to work together to create a one-of-a-kind campus for entertainment, research, education and agribusiness, as explained on the Center’s website.

On Monday, January 29, construction officially started on the NWC Brighton Boulevard Segment 47th Avenue to Race Court with structure removal activities. Acquiring 10 residential parcels and 28 commercial parcels will allow the center to expand north from what is currently the National Western Stock Show. The development will include 250 acres, taking the existing 90 acres and expanding to allow for more space.

“We will be on the same site plan as we are today,” said NWSS President and CEO Paul Andrews. “In the development of the National Western







The new campus will include wood from the original stockyards pictured here in 1918.

Center, there will be plenty of opportunities to honor our past as we plan for the future in this redevelopment.”

The Yard Show will continue to be a centerpiece of the NWSS.

Phases one and two of the expansion project will take place between now and 2023.

“The historic piece is so special,” admits Andrews. “The essence of the project is occurring with the same start as the original grounds in 1906 – The Yards.”

Where the Hereford Pen and Carload Shows take place and the animals are housed, boards and wood making up the current facility will carefully be removed as part of the first phase to be completed by 2021. All wood will be reused on the grounds, keeping the rich history in tact while expanding the current Yards by 20 acres and increasing the electricity, water and comfort of the current outdoor facility.

“Some of the wood from the current Yards facility will be used in the new livestock center entry way where we will prepare and show cattle,” explained Andrews.

The second stage of the expansion will include the new livestock and equestrian centers, starting in 2021 after the new Yards are developed, with a goal of competition by 2023. By expanding the facility, the show and attendance could easily approach 1 million people from near and far.

“This expansion will allow us to expand our show,” said Andrews. “The fully air conditioned facility will also allow us to compete with other facilities in hosting summer shows.”

A new livestock center will include seating for 3,000 people and be attached to 200,000 square foot of livestock barns. There will be a new equestrian center right next to the livestock barns and include two show arenas, one to seat 500 and the other boasting 4,500 seats, with 700 permanent stalls for horses.

Phase three of the NWC will include the new rodeo arena and exhibition hall. This phase will begin after 2023 when all livestock facilities are complete.

Built off the history and heritage of the NWSS, the new Center will secure the future of the livestock event. Increased year-round programming will create opportunities for education, food and food production, art, agriculture and livestock, water resources, and recreational activities through collaboration at the new “campus”. As the vision statement reads, “The NWC celebrates the pioneering spirit and promise of the West through year-round experiential life-long learning, the arts, entertainment, competition and commerce.”

Over the next 10 years, the new NWC campus will be an international center of excellence in agricultural innovation, education, research, technology and imagination as well as entertainment and competition, serving the needs and interests of farmers, ranchers, tourists, researchers, students and educators around the world.

(L to R) Will Hendricks, Republic, Mo., and Paynton Kanoy, Concordia, Mo., exhibiting at this year's NWSS.







District 1: Director - Amy Phillips

*Herefords with Performance, Muscle and Style*

**THOMPSON HEREFORDS**  
TOM, LAURA, MADELYN & BRYNLEE THOMPSON  
RHODA THOMPSON  
Amity, MO • 816-284-3276

Elite 8 Online Hereford Sale - October 8, 2018

District 2: Director - Brian Littleton

*Breeding for Excellence*

Offering Horned and Polled Genetics!  
Fall and Spring Bulls for Sale by Private Treaty!

**Belzer Farms**  
Browning, MO 64630  
Ted Belzer • 660-244-3333  
Tony Belzer • 660-734-8006  
April Miller • 816-305-7490  
aprilmiller1732@gmail.com

**Circle R Cattle Co.**  
*Polled and Horned Genetics*

**The Reynolds'**  
Dan, Rose, Danielle  
and Dalton Reynolds  
505 E. ELM  
HUNTSVILLE, MO 65259  
PHONE: 660-269-6949  
EMAIL: drr7wb@gmail.com

Annual Production Sale  
**SUNDAY, OCTOBER 21, 2018**

**REYNOLDS HEREFORDS**

Matt, Barb, Tye & Makayla  
1071 C.R. 1231 • Huntsville, MO 65259  
Matt Cell 660-676-3788 Barb 660-676-4788  
reynoldscattle@cvalley.net  
www.reynoldsherefords.com

*Offering Horned and Polled Genetics*

**Waters Farm**  
Glen, Kyla, Kristin & Grant Waters  
10316 K Highway  
Norborne, MO 64668  
660.484.3127 home phone  
660.707.3646 mobile phone  
gwaters@landolakes.com

District 3: Director - Mary Beth Ray

District 4: Director - Tim Bernt

**H&H Herefords**

Brad, Sherry & Justin Hurst  
Chris, Reba & Zakary Rapp  
17275 S. 1900 Rd.  
Nevada, MO 64772  
Brad 417.321.2350  
Sherry 417.321.0423  
h2herefords4@gmail.com

www.handsherefords.com

Brad, Sherry & Justin Hurst  
Chris, Reba & Zakary Rapp  
17275 S. 1900 Rd.  
Nevada, MO 64772  
Brad 417.321.2350  
Sherry 417.321.0423  
Email: brad@handshshowsupplies.com  
Email: sherry@handshshowsupplies.com

**H&H Show Supply**

**WEAVER LEATHER LIVESTOCK**  
Authorized Weaver Leather Livestock Dealer in Southwest Missouri

www.handshshowsupplies.com

**J Bar K Farms**  
Jerry and Katherine Arnold

16531 E. Militia Rd. • Nevada, MO 64772  
(417) 667-8730 (417) 667-1015

**Laze-D Herefords**  
Dennis and Sherry Michael  
17770 S. 425 Rd.  
Jerico Springs, MO 64756  
417-398-0019  
lazedherefords@hotmail.com

**Bakerville Cattle Co.**  
Jon and Debra Baker  
111 E. North  
Timewell, IL 62375  
217-653-7546

**Registered Red and Black Herefords Available**  
- Combining the best of both worlds -



**Day's Family Farm**  
 Pilot Grove, MO  
 Larry and Pam Day  
 660-834-4678 home • 660-621-0812 cell  
 ljd@illand.net




*Raising Hereford cattle for over 50 years*  
 www.daysfamilyfarm.com



Your source for performance-tested  
 Polled Hereford Bulls and  
 Quality Replacement Females

*Glengrove Farm*  
 www.glengrovefarms.com

Bob and Gretchen Thompson  
 12905 County Rd. 4010  
 Rolla, MO 65401  
 Home 573-341-3820  
 Cell 573-368-9557

**KAUFFMAN HEREFORD FARM**  
 908 Lomo Drive  
 Jefferson City, MO 65109

Dennis Kauffman  
 573-291-6744

Bob Kauffman  
 573-635-6632

EMAIL: dkauffman@aol.com

**LUDWIG FARMS**



Dale, Rhonda, Trent, Claire & Troy  
 Linn, MO  
 Phone: 573-338-6000  
 Email: ludwigdale@yahoo.com

**HERD SIRES**  
 Ludwig Catapult X-Box C21 ET  
 Ludwig Tank Game Day B65

**AI SIRES**  
 Kickstart Catapult Federal Red Bull  
 Hometown Trust R Leader Small Town Kid  
 Porterhouse Chippendale

**ROCKING F POLLED HEREFORDS**

Frank and Pam Flaspohler  
 222 County Road 402  
 Fayette, Missouri 65248  
 Phone: 660-537-4809  
 E-mail: fwf@rockingf.com



**PRODUCING POLLED HEREFORD SEEDSTOCK**



**Proven Genetics**  
**WF** Private Treaty  
 Offers Available

Bulls and Females for sale at Private Treaty

Matt Woessner  
 (573) 308-7006  
 matt@inv-rel.com

Mike Woessner  
 (573) 578-4050  
 mike@inv-rel.com

11975 County Road 3450 • St James, MO 65559  
 WWW.WOESSNERFARMS.COM

District 6: Director – Rick Steinbeck

**AMR** **Alex Roth**  
 Polled Herefords

Alce and Michaela Roth  
 Altenburg, MO  
 (573) 576-5141

Dale, Lindy & Anna Roth  
 Altenburg, MO  
 (573) 450-1214


Hereford and Charolais Cattle  
 Registered Hereford Cattle

**CRIDER FARM**  
 Since 1845



Polled Herefords

Bland, MO 65014 (573) 646-3883



**STEINBECK FARMS**

Approximately 35 Polled  
 Hereford and Red Angus  
 Bulls available annually

Rick & Laurie Steinbeck  
 2322 Drake School Rd • Hermann, MO 65041  
 Cell 573-680-0954 Home 573-237-2668

**DORRAN**  
 Marketing Inc.



*DorranMarketing.com*

**RYAN DORRAN** 403-507-6483  
 ryandorran@hotmail.com

**AUCTIONEER**





**ACES POLLED HEREFORDS**

Danny & Lila Fanning  
21245 Hawthorne Rd.  
Joplin, MO 64801  
C 417-499-6694  
dlfanning.acelivestock@yahoo.com



**Bulls and Females For Sale**



**Blue Ribbon Farms**

11768 W. Farm Rd. 34  
Walnut Grove, MO 65770

Jeff & Stephanie Rawie  
417-209-5538  
jeffrawie24@yahoo.com

Aaron & Kylie Noble

**See you at the 2018 shows**

**BPH**  
**BUTLER POLLED HEREFORDS**

Jimmie, Andrea & Joel Butler  
Cody & Jocelyn Washam  
417.732.6069 417.838.4095  
butlerpolledherefords@hotmail.com

Registered Polled & Horned Genetics



"Always breeding for a better one" 

**CHOATE**  
*Polled Herefords*

Mike, Cathy & Julie

5373 South 226th Road  
Pleasant Hope, MO 65725

Mike: 417-880-3925  
Julie: 417-298-5968  
choateherefords@gmail.com

**DUVALL**  
Polled Herefords

Gary and Frances Duvall  
1082 Hwy 97 • Lockwood, MO 65682  
417-232-4817 H 417-827-2163 C  
duvallherefords@keinet.net

**Herdsmen: Ryan Applegate 417-239-4123**

Holmes Hereford Farm  
Greg & Vicki Holmes  
56 State Hwy A  
PO Box 482  
Wheaton, MO 64874  
Phone: 417-652-7463  
Cell: 417-848-9010  
holmesfs@windstream.net



Horned & Polled  
Herefords

Visitors Are Always Welcome

**McConnell Farms**

Heifers and Bulls For Sale By Private Treaty

Darrell & Judy McConnell  
11524 West Farm Road 168  
Republic, MO 65738  
Phone: 417-732-7196

**McMillen's Toothacre Ranch**

Trent & Mary McMillen  
& Family  
9128 W. Farm Road 30  
Walnut Grove, MO 65770



417-788-2787 home 417-830-7257 cell

**R&L Polled Herefords**

4401 S. 200th Rd.  
Halfway, MO 65663

*Herd Sire Prospects  
Select Females*

Kody Agee  
Showman

Lendell Voris  
417-445-2461

District 8: Director – Travis McConaughy




**Evans Hereford Ranch**

Registered Polled and Horned Herefords

Mark, Kelly, Hannah and Rebekah Evans  
194 Delaware Lane • Squires, MO 65755  
Home: 417-265-3649 Cell: 417-683-7411  
Email: ehranch@yahoo.com

*www.moherefords.org*





**APH**  
**Aufdenberg Polled Herefords**  
*"Quality You Can Count On"*  
Darrell & Karen Aufdenberg  
Jackson, Missouri  
(573) 270-6755 cell  
aufdenbergd@yahoo.com


**LPH**  
**Lizzie's Polled Herefords**  
Kenny, Michelle & Elizabeth Spooler  
1788 County Road 347  
Jackson, MO 63755  
573-270-4145  
lphspoolerfarms@aol.com

## Kansas

**Kanza Cattle**  
*Polled Hereford Breeders Since 1920*

**Bulls & Females for Sale**  
Foundation & maternal bloodlines with Wonder/Progress influence

Lori Riffel Hambright & Family  
Chapman, KS (2 hrs west of KC on I-70)  
785-313-6565 • kanzacattlevines@hotmail.com



**MALONE**  
*Hereford Farm*  
1371 Road F ~ Emporia, KS 66801  
Phone/Fax: 620-342-7538  
Alton's Cell: 620-794-2358  
ammalone@lcwb.coop  
Alton, Marie, Brian, Dustin and Michelle Malone

**T TOWNER FARM**  
HEREFORDS POLLED & HORNED

John Towner  
320 E. 47 Hwy  
Girard, KS 66743  
P: 620-724-6636  
C: 620-249-6636  
john@townerfarm.com  
www.townerfarm.com

## Kentucky



**Toby & Debby Dulworth**  
270-224-2993  
**DOGWOOD FARM**  
**Herefords since 1964**  
**Pasture-Selected**  
dogwood@brtc.net  
2492 Kirkman, LaCenter, KY 42056

### Life is Simple

We all know that the farming community is a small, close-knit group of individuals. For as long as I can remember, most every farmer in a given county will know (or know of) every other farmer in that county, because they see each other at the sale barn, feed store, farm supply store and cattlemen's meetings on a regular basis. Because of recent events, I've concluded that the agricultural community is getting wider, but staying small.



**Jerry Crownover**

About three years ago, I picked up my state cattleman's magazine to thumb through the issue, and was struck by the pictures of thirty-some young people who had received a college scholarship sponsored by the organization. There was a short profile that accompanied each photograph, highlighting their hometowns, involvement in the beef industry, and names of their proud parents. The entire state was well represented and I was impressed with the accomplishments as I read the short biography of each youngster. As I put down the magazine, it dawned on me that I knew almost every one of the kids—or their parents. What a small world.

The small-world explanation can also be used to explain how a normal thirty-minute trip to the local feed store can often take two hours or more because the three farmers I run into during my outing are not the same three that were there last week. We have to catch up on the news and happenings.

But, the kicker to the extent of our small community came last week.

As I continue to downsize my farming operation while easing into old age, I decided to put all my haying equipment up for sale on a popular computer app. I received lots of calls and have been pretty successful at selling most of the pieces of machinery, but one evening I got a call that was identified by an area code with which I was unfamiliar. The caller asked if I still had my mower and I answered that I did. After a few questions about the age and condition of the mower, he asked, "Just where are you located?"

"I am in the southwestern corner of Missouri," I answered. "From where are you calling?"

"I'm from outside the little town of Centerville, Iowa," he proudly answered.

Now, folks, I probably know fewer than a dozen farmers in the entire state of Iowa, and I live over three-hundred miles south of Centerville, but two of the people I do know live in that small, rural town. I asked him if he knew my friends.

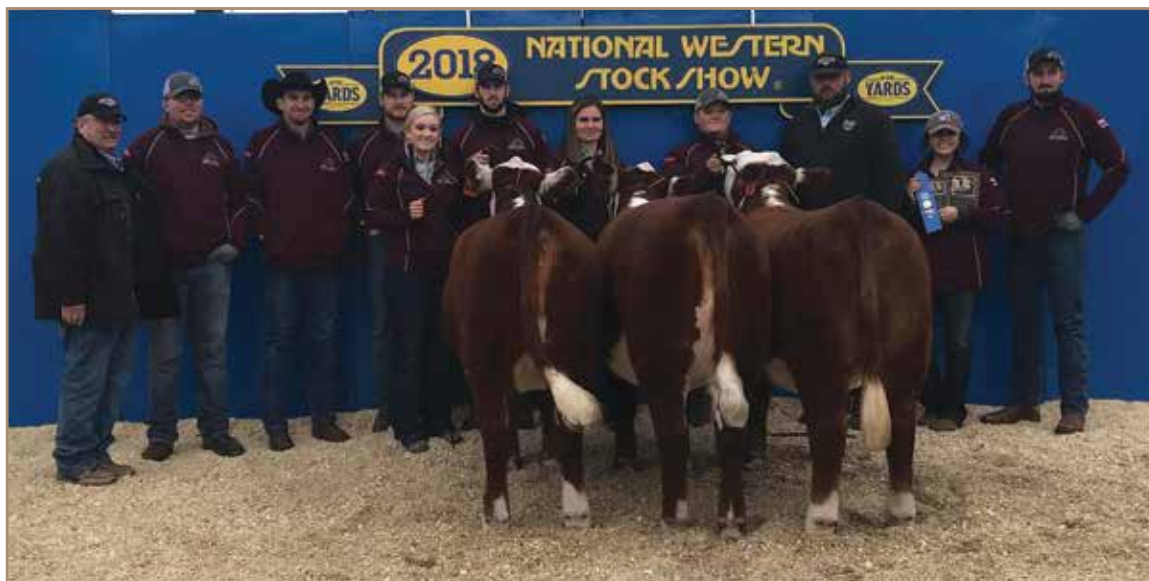
There was a rather protracted length of silence before he stammered, "Well...er...yes...I do."

Yes, it is a small world of farmers and no, he didn't buy my mower. I sold it the next day to a farmer who lived two hundred miles closer and whose cousin had been my FFA president in the first school where I taught agriculture...forty-three years ago.



# NATIONAL WESTERN STOCK SHOW

January 12, 2018 | Denver, CO | Hereford Pen & Carload Show  
Judges: Dale Micheli, Fort Bridger, WY; Cody Sankey, Economy, IN; John McCurry, Burrton, KS



Champion Senior Heifer  
Calf Pen of Three  
**Missouri State**  
University/Journagan  
Ranch, Springfield, MO



The Hereford breed set another record at the NWSS in Denver Jan. 10-13 for the second year-in-a row.

## Advertising Index

AbraKadabra Cattle Co.	Back Cover	Kaczmarek 4K Herefords	2
ABS Global, Inc.	35	Kanza Cattle	45
Aces Polled Herefords	44	Kauffman Hereford Farm	43
Alex Roth Polled Herefords	43	Laze-D Herefords	42
AMR	43	Lill Farms	29
Aufdenberg Polled Herefords	8, 45	Lilac Hill Polled Herefords	22
Belzer Farms	42	Lizzie's Polled Herefords	45
Blue Ribbon Farms	44	Ludwig Farms	43
Bonebrake Registered Herefords	6	Malone Hereford Farm	45
Butler Polled Herefords	44, 47	McConnell Farms	44
Candy Meadow Farms	14	McCorkill Family Farms	19
Cattle Visions	27	Mead Farms	33
Central MO Polled Hereford Breeder's Assoc	21	McMillen's Toothacre Ranch	44
Circle R Cattle Co.	42	Midcontinent Livestock Supplements	37
Choate Polled Herefords	29, 44	Miller Herefords	25
College of the Ozarks	20	Missouri Opportunity Sale	9
Cowco, Inc.	39	Phillips-Renner Farms	34
Crider Farm	43	R&L Polled Herefords	44
Crutinger Hereford Farm/Crutinger Feed & Freight	6	Reed Farms	3
Day's Family Farm	43	Reynolds Herefords	42
Dogwood Farm	45	Rocking F Polled Herefords	43
Doran Marketing Inc.	38, 43	Roth Hereford Farm	26
Duvall Polled Herefords	44	Rural Route Creations	20
Evans Hereford Ranch	44	Steinbeck Farms	43
Falling Timber Farm	7	Thompson Herefords	42
Glengrove Farm	19, 43	Tri-L Polled Herefords	38
Gregory Hereford Ranch	32	Triple H Acres	26
Gregory Polled Herefords	22	Towner Farm	45
H&H Herefords	42	Waters Farm	42
H&H Show Supply	42	Wide Range Bovine Unlimited	15
Holmes Hereford Farm	44	WMC Cattle Co.	24
J Bar K Farms	42	Woessner Farms	28, 43
Jim D. Bellis Family	23	Zoetis, Inc.	10-11
Journagan Ranch / Missouri State	3		



The United States Department of Agriculture released on January 1, 2018, by the National Agricultural Statistics Service that Missouri now ranks second among all states for the number of beef cows. Farmers and ranchers in Missouri can proudly say our beef cow herd expanded by 111,000, which is a five percent increase from the previous year. Missouri also grew our calf crop by another six percent to maintain second place. The Missouri Department of Agriculture has supplied these graphics to amplify this message and reminds everyone that as we celebrate the 2018 reports, please keep in mind the impact devastating wildfires in 2017 may have had on livestock inventory numbers and your fellow ranchers in Colorado, Kansas, Oklahoma and Texas.





Missouri Cattlemen's Association  
All Breeds Jr Show  
2017  
*Our Doors are Open*



Mason daughter owned by Claire Silvers

**to view our strong set of fall show heifer prospects!**



Laramie daughter  
owned by Payton Kanoy



Hutton daughter  
owned by Payton Dunn

Heifers like these for sale on a first  
come, first serve basis after April 1!

Come check them out for yourself!  
You won't be disappointed!

**Heifers sired by:**

**2296 • Laramie • Prophet  
Chism • 2012**



About Time daughter  
owned by Jase Beltz



About Time daughter  
owned by Connor Dunn

We also have a stout set  
of bulls for sale!

**Mark your calendars - Fall 2018!**

*Maternal*  
**EXCELLENCE**

**ONLINE HEREFORD HEIFER SALE**

*Offering our best Spring Show Heifer Prospects*

Hosted through Lowderman Auction Options

*Visitors always welcome!*

**BUTLER POLLED HEREFORDS**



Jimmie, Andrea & Joel Butler • Cody & Jocelyn Washam  
4195 South Farm Rd 53 • Republic, Missouri  
417-838-4095 **Jimmie** 417-838-3665 **Joel** 417-489-5450 **Cody**  
jocelyn.washam@hotmail.com

**Open Range Cattle Co.**

**Kristin Allen • Rogers, AR**  
816-729-6305  
ksamizzou@yahoo.com



# AH JDH MUNSON 15E ET



CE	BW	WW	YW	DMI	SC	SCF	MM	M&G	MCE	MCW	UDDR	TEAT	CW	FAT	REA	MARB	BMI\$	BII\$	CHB\$
1.7	2.7	57	93	0.2	1.2	15.3	27	55	2.0	82	1.30	1.30	81	0.015	0.54	0.33	26	23	36

**P43803648 — Calved: Jan. 11, 2017 — Tattoo: BE 15E**

TH 122 71I VICTOR 719T (SOD)(CHB)(DLF,HYF,IEF)  
JDH VICTOR 719T 33Z ET (CHB)(DLF,HYF,IEF)

P43294080 JDH MS YANKEE 11U ET (DLF,HYF,IEF)

DRF JWR PRINCE VICTOR 71I (SOD)(CHB)

KBCR 19D DOMINETTE 122 (DLF,IEF)

AH YANKEE 10S (SOD)(CHB)

JDF MS ISAACS 075 60N (DOD)

JDH 15 WRANGLER 25L (SOD)(CHB)(DLF,HYF,IEF)

AH JDH MS 25L WRANGLER 34X ET (DOD)(DLF,HYF,IEF)

P43105631 AH QUEEN BELLE 14R (DLF,HYF,IEF)

JDF 16D WRANGLER 15 (SOD)

JDH MS LUTE 18J (DOD)(DLF,IEF)

REMITALL EMBRACER 8E (SOD)(HYF)

AH MS BANNER QUEEN 19H

- Homozygous polled
- 2018 NWSS Champion Junior Bull Calf
- Combines style and performance in a predictable genetic package.

**Semen: \$30/Straw; \$75/Certificate**

**Contact Tammy Boatman at 770-354-4195**

**ATKINS  
HEREFORDS**



**JDelaney  
HEREFORDS**

**AbraKadabra  
Cattle Company**

Mark Abramovitz and Terry Elwing

6969 Bass Ln.

Columbia, MO 65201

573-864-6475

telwing@gmail.com

www.abracattleco.com

*Mark Your Calendars*

**Oct. 1, 2018, on SmartAuctions.com**

**AbraKadabra Cattle Co. and Biglieni Farms Internet Sale**

**Show heifer prospects, bred heifers, embryos, semen and more!**