

MARCH 2017

MHN

Missouri Hereford News

Official Publication of the Missouri Hereford Association



Sire Selection

Selecting to Impact Your Herd

Inside this issue

Recognizing the James Waters' Family
Complying with Veterinary Feed Directive
Annual Meeting & Sale Review
National Western Stock Show Results

PRESORTED
STANDARD MAIL
U.S. POSTAGE PAID
LivestockDirect
PERMIT NO. 29

Missouri Hereford News
30487 Hwy J
Wentworth, Missouri 64873



MH 122L

Prophet

Prophet pictured as a two-year-old

5108 ET



Semen For Sale - Contact Owners

2016 Missouri Hereford Assoc. Show Bull of the Year

Make every thought, every fact, that comes into your mind pay you a **PROFIT**. Make it work for you. Think of things not as they are but as they might be. Don't merely dream - but create!

Robert Collier

P43619163 • Polled • 3-20-15
Sire: Ribeye 88X • Dam: Online



Rusty & Marijane Miller & Family
Lebanon, Missouri
Rusty Cell 317-840-7811
millerherefords@yahoo.com
www.millerherefords.com

BPH
BUTLER POLLED HEREFORDS

Jimmie, Andrea & Joel Butler
Cody & Jocelyn Washam
Republic, Missouri
417-732-6069 H 417-838-4095 C
butlerpolledherefords@hotmail.com

Look for Prophet at shows this summer/fall!



Prophet calves sure have a look at a young age!

Consider this.....

Thanks to Reed Seedstock for
purchasing 1/2 possession



NJW 135U 10Y HOMETOWN 63A ET • Reg: P43385182

Real World Beef Bull • Added Carcass • Big Ribbed
Wide Based, Great Feet • Actual scrotal of 40 cm at 12 mo.
Dark pigment with freckles • **\$25/straw; \$75/cert**

CED 0.4 BW 3.8 WW 63 YW 99 MILK 34 M&G 66 CEM 2.3 SC 1.2 UDDER 1.32
TEAT 1.30 FAT -0.006 REA 0.66 MARB 0.36 MCW 126 BMI \$23 CEZ \$15 BII \$18 CHB \$38

**Super set of yearling and 18-month-old
bulls to choose from at the ranch! Call us for details!**



Travis & Sarah McConnaughey
Wasola, MO
Phone: 417.989.0486
Email: t-mc2009@live.com



GRNDVIEW CMR156T VISIONY509 ET

Reg: 43214916

Mr Maternal X Ginger 23G

\$30/straw; \$75/cert

CED -1.8 BW 3.0 WW 51 YW 77 MILK 27 M&G 53
CEM 0.1 SC 1.0 UDDER 1.37 TEAT 1.39 FAT -0.018
REA 0.36 MARB 0.37 MCW 84 BMI \$20 CEZ \$13
BII \$19 CHB \$29



NJW 73S 980 HUTTON 90A ET

Reg: P43385209

Helton 980 X Daydream 73S

\$30/straw; \$50/cert

CED -5.3 BW 5.9 WW 67 YW 104 MILK 32 M&G 66
CEM -1.2 SC 0.6 UDDER 1.20 TEAT 1.15 FAT -0.003
REA 0.86 MARB -0.06 MCW 117 BMI \$10 CEZ \$7
BII \$7 CHB \$29



GRANDVIEW CMR 86P JOSE Y311

Reg: 43206850

Domino 86P X P606 **\$20/straw; \$60/cert**

CED 1.4 BW 2.8 WW 55 YW 81 MILK 29 M&G 56
CEM -0.3 SC 0.5 UDDER 1.30 TEAT 1.33 FAT 0.046
REA 0.44 MARB 0.28 MCW 64 BMI \$15 CEZ \$14
BII \$11 CHB \$28

Editors

It's been a busy past few months since the November Missouri Hereford News! In this issue you will find reports from the Missouri Annual Meeting and Banquet along with the state's Opportunity Sale, both held the first weekend in December. Sales ended on a high note on Missouri.

We hope your family had an exceptional holiday season! Take the opportunity to set goals for the new year. It's a great time to evaluate what you are doing and strive to make improvements for the future.

We conducted a survey in December to evaluate our first year as editor of the Missouri Hereford News. Thank you for taking the time to provide feedback and rate sections of the publication that your operation benefits from. The results will serve as a guide for us throughout the year as we strive to make this magazine the best regional Hereford news source. A heartfelt thank you to those breeders who purchased prime pages auctioned off during the Missouri Hereford weekend – **AbraKadabra Cattle Co., College of the Ozarks, Miller Herefords/Butler Polled Herefords, WMC Cattle Co. and MSU Journagan/Reed Farms.**

Check out our new website for the Missouri Hereford Association. Visit www.moherfords.org to see the updated, new look launched in 2017! If you are wanting more online marketing presence, we hope you will consider a banner advertisement on the website. The site is a great tool for looking up member information, event dates, board contacts, applications, important news and much more! We appreciate the **Jim D. Bellis Family** for purchasing the 2017 homepage banner advertisement!

As breeding season approaches for many, consider the A.I. sires and upcoming bull sales advertised within this issue. So many great Hereford genetics can be found within our region.

May is celebrated as beef month and let's not forget the end product we are all striving to produce. Don't depend on anyone else to tell your story. Cattle producers have a great responsibility in spreading the message of beef with the upcoming grilling season. With the large suburb areas around the region, use every opportunity to educate the consumers around you. YOU are the best voice for beef!

Our next issue will be released at the Junior National Hereford Expo! Be sure to plan and attend the largest Hereford event of the year!

– The Editors, *Rural Route Creations*

Cassie Dorran, editor

Jocelyn Washam, editor



This newsletter is edited by
Rural Route Creations
30487 Hwy J • Wentworth, MO 64873
www.ruralroute creations.com

2017 Publication Dates

Issue	Ad Space & Material Deadline	Camera Ready-Ad Submission
March 1	Jan 24	Feb 1
July 15	June 10	June 15
September 15	Aug 11	Aug 17
November 1	Sept 27	Oct 3

“You are the best voice for beef!”



Advertisement & News Submissions:

Cassie Dorran 403-507-5953 cassie@ruralroute creations.com
Jocelyn Washam 417-838-5546 jocelyn@ruralroute creations.com

Rural Route
CREATIONS

Advertising Rates:

Advertising rates include design at no extra cost! Two design proofs will be provided by email with each advertisement purchase. If additional changes or inclusions need to be made after the second proof, the advertiser will be billed at \$50 per hour.

All contracted ads are for the current calendar year.

Ad Type	Cost Per Issue	4X Contract Price
Full page color ad	\$275	\$1000*
Half page color ad	\$150	\$528
Full page b&w ad	\$222	\$792
Half page b&w ad	\$135	\$475
Quarter page color ad	\$70	\$255
Business card color ad	(contracted only)	\$150

* All ads must be received by deadline!



IN THIS
Issue

- 4 | Words from the Editors
- 4 | Publication Dates and Advertising Rates
- 5 | Missouri Hereford Association Officers
- 8 | State Association Update
- 10 | News from the American Hereford Association
- 12 | Women Association Update
- 12 | The Ranch Kitchen
- 12 | 2017 Missouri Hereford Queen Crowned
- 14 | Junior Association Update
- 14 | 2017 Junior National Hereford Expo
- 16 | Life is Simple
- 18 | National Western Stock Show Results
- 20, 26 | Around the Barn Membership Updates
- 31 | May - National Beef Month
- 32 | Sale Results
- 34 | Association & Industry Events & Deadlines
- 39 | HYFA Foundation Female Purchased
- 40 | Advertising Index
- 40 | 2017 Missouri Field Day Announced

8-9 State Recognizes *Award Winners*
Hereford weekend in Sedalia Huge Success

17 *New* Veterinary Feed Directive
Answers from Dr. Craig Payne concerning new FDA ruling

24-25 *Waters Family* - Passion for Ag
Missouri Hereford Association Hall of Fame Inductees



8-9



24-25

Missouri Hereford Association

Officers and Directors

www.moherfords.org

<i>President</i>	Justin Sissel	Elkland	District 7
<i>Vice President</i>	Mark Abramovitz	Columbia	District 5
<i>Secretary/Treasurer</i>	Matt Reynolds	Huntsville	
<i>Directors</i>	Amy Phillips	Richmond	District 1
	Brian Littleton	Keytesville	District 2
	Bill Nation	Vandalia	District 3
	Tim Bernt	Leeton	District 4
	Rick Steinbeck	Hermann	District 6
	Travis McConaughy	Wasola	District 8
	Kenny Spooler	Jackson	District 9

To download a Missouri Hereford Association membership application and to view most current events, applications and announcements, visit the Missouri Hereford Association website at www.moherfords.org

Missouri Hereford Association
Matt Reynolds,
Secretary/Treasurer
1071 C.R. 1231
Huntsville, Missouri 65249
660-676-3788

© Rural Route Creations



Cover photo
© Rural Route Creations



SW MO All-Breed Performance Tested Bull Sale

March 27, 2017 • NOON
Springfield Livestock
Marketing Center

Selling a powerful Times Up son
Reg # 43695763

Also selling:
Hyalite on Target 936 son out of an About Time
daughter Reg: 43688674

Action 106A son out of a Holden cow
Reg: 43688660



AI and MD Bonebrake
Springfield, Missouri
Manager: Steve Greene
417.693.7881

Arkansas Bull Sale

March 25, 2017 • NOON
Cleburne County
Livestock Auction
Heber Springs, Arkansas



Selling a Cash Flow son out of our
popular Oxley 1093 cow
Reg: 43695768

Also selling:
Times Up son out of a P606 cow
Reg: 43695766

Son of our Domino 139 bull and a 719T cow
Reg: 43688662

2-year-old Wyarno son
Reg: 43664386

Contact us for more information!

COWCO, INC.

LIVESTOCK EQUIPMENT

Cattle Handling Equipment, Squeeze Chutes, Alleyways, Crowding Tubs & Complete Working Systems



895 Basic System

In addition to offering our own line of livestock equipment, we continue
to distribute complimentary lines of equipment from other quality manufacturers.

Missouri Representative: Rick Washam - Pierce City 417-489-5455

1-800-240-3868 www.cowcoinc.com

WOOLFOLK FARMS FEMALE SALE

TN Livestock Center

May 20, 2017

Columbia, TN

**SELLING: OPEN HEIFERS, BRED HEIFERS, DONOR 005, COW-CALF PAIRS
(ALL COWS 5 YEARS OLD OR LESS), EMBRYOS FROM OUR DONOR TEAM AND A FLUSH TO 1570.**

SIRES REPRESENTED IN THE OFFERING: NJW TRUST 100W • H H PERFECT TIMING 0150 • SHF ACCESS A90 • NJW HOME-TOWN 10Y • NJW HANDSHAKE 83Y • THM 3060 RODEO 7478 • KJ 649U REDEEM 439Y • CHAC MASON • NJW HOMETOWN 8Y • LARAMIE • KCF ENCORE • WF 88X RIBEYE T137 1607 ET (2016 MO, TN, MS AND AR STATE FAIR CHAMPION BULL)



GO Ms PJ Excel T124 Reg: 42792236

First opportunity to buy offspring from the CAPTAIN of the WF & HAF donor team! You're gonna like them.



WF 109 Country Girl 989W 1570 ET Reg: 43483316

Owned with Hoffman Ranch, Thedford, NE
Flush opportunity from this exciting 3-year-old sells!



TF Burks P49 Beth 122L 005 ET Reg: 43124996

005 quickly made a tremendous impact at WF & HAF! She has been a prolific donor producing both outstanding heifers and bulls. Selling open ready to breed or flush with her best years still ahead of her!



WF 7478 Rodeo Queen 1284 Reg: 43284764

1284 represents a group of 4 & 5 year old Rodeo daughters that will be selling with fall calves at side sired by some of the most sought after bulls in the breed!

WOOLFOLK FARMS

131 Hallie Anderson Rd

Jackson, TN 38305

Scott 731-571-7399

Johnny 731-225-2650



woolfolkfarms@yahoo.com

Keep up to date with "What's Happening" at Woolfolk Farms by going to our website wfherefords.com or by visiting with us on Facebook at Woolfolk Farms.

Update

Welcome to another exciting issue of the Missouri Hereford News. This is without a doubt the most exciting time of the year, mainly because of the spring calving season where you get to see how your spring breeding plan worked out. I'm sure most of you are in the middle of calving season or even starting to finish and see the end. As all of you know spring time is also decision making time. The Association has two tools to help you make your spring breeding plans. As you can see this issue several ads with breeders promoting upcoming sales and cattle for sale by private treaty, along with ads on some of the breed's best AI sires. The second tool is the new 2017-2018 membership directory that should be in your mailbox any day, if you are a dues paid member. If you haven't been, we welcome you to join anytime or just request a directory. The directory has a lot of breeder ads along with the entire membership listing for you to find Hereford cattle across this state.

We had another exciting Hereford weekend back in December with the Opportunity Sale and annual meeting. Congrats to all the consignors on another great sale. You can find the sale report in this issue. Also, congratulations to the many award winners at the annual awards banquet where a full-house crowd enjoyed a CHB ribeye steak dinner served by the Hereford Women! Thank you ladies for all your help with the association and the junior program.

Just a reminder you must have your 2017 dues paid by April 1 to receive a award at the 2017 awards banquet; please respect this board of directors' rule. Another date we have coming up on May 1 is the Opportunity Sale nomination deadline. This is not something new; if you want to put cattle in the 2017 Opportunity Sale you must nominate your operation to get your name on the consignors' list. This is how it works – you send a check for \$100 to the MHA which gets your name on the consignors list and a visit from Joe Rickabaugh, our AHA field services director. If you and Joe agree that you have cattle for the sale that he selects, I will send you entry forms on September 15, 2017 and your \$100 will be a credit back to you on your settlement sheet in December. If you do not enter those cattle to the sale you will forfeit the \$100. If you and Joe do not agree on cattle to consign, I will return your \$100 to you. If you have any questions please call.

I want to take a minute and thank and congratulate the breeders who took cattle to the National Western Stock Show in Denver, Colorado. It goes to show each of us the level of high, top-end quality cattle our breeders here in Missouri produce.

As we start to make Hereford travel plans for the year, please make



Matt Reynolds
Missouri Hereford Association
Secretary/Treasurer

State Recognizes Award Winners

2016 MHA
Hall of Fame
Inductee –
Gary Duvall,
Lockwood,
MO



2016 MHA
Hall of Fame
Inductee –
Waters Farms,
Norborne, MO



2016 MHA
Purebred
Breeder of the
Year – **Miller
Herefords**,
Lebanon, MO



plans to attend the MHA field day September 8-10. The breeders in District 7 will be your host and I'm sure you won't want to miss it. Watch the summer issue for complete details.

We wish you the best this spring calving season and encourage each of you to get those top-end females AI bred and consigned to the 2017 Opportunity sale. It will be the one sale you won't want to miss this fall. I hope to see each of you at the spring sales and summer events!

– *Matt Reynolds*, MHA Secretary/Treasurer



The Missouri Opportunity Sale and annual meeting in Sedalia, MO, was very well attended in 2016.



© Rural Route Creations

Awards Cont.



2016 MHA Show Bull of the Year – **Butler Polled Herefords**, Republic, MO, and **Miller Herefords**, Lebanon, MO, with MH 122L PROPHET 5108 ET, sired by NJW 98S R117 RIBEYE 88X ET



2016 MHA Show Heifer of the Year – **Taylor and Tory Miller**, Lebanon, MO, with MH 122L MISS TIME 4068 ET, sired by CRR ABOUT TIME 743



2016 MHA Show Cow/Calf of the Year – **Amanda Bacon**, Siloam Springs, AR, with MH 74 51 L18 MISS 196T 4424, sired by BOYDS ZD ACHIEVER 1115



2016 MJHA Outstanding Junior Members – PeeWee: **Kristin Waters**, Norborne, MO; Junior: **Tatum McGlothlin**, Richmond, MO; Intermediate: **Connor Bolch**, Holt, MO; Senior: **Ellen Jackson**, Miller, MO



MHA (\$750) Investment Scholarship – **Shelby Bagnell**, Slater, MO; MJHA (\$250) Investment Scholarship – **Dalton Reynolds**, Huntsville, MO (not pictured)



2015 MHA Consignor of the Year – **Glengrove Farms**, Rolla, MO



2016 MHA Friend of the Association – **Gary Doss**, Smithville, MO



2016 MJHA Friend of the Juniors – **Gary Wood Family**, Maysville, MO



New State Website

Visit moherefords.org to view the updated look of the Missouri Hereford Association website. The new, fresh look is appealing, easy to read and viewable on any mobile or tablet device.

Banner advertisements are available for several of the pages. Contact Rural Route Creations for availability.

American Hereford Association

Marketing in 2017

With the coming of 2017 it will be interesting and challenging in the marketing arena for the Hereford industry. The first several sales this year have been steady. The Mile High Night and Mile High Eve frozen genetics sale held recently in Denver were solid and showed a keen interest for the front-end Hereford genetics. The March Hereford World will have complete coverage of the Denver Hereford activities both on the hill and in the yards.

Since January 1 and through February 6, 2017 a total of 1,074.25 lots have been reported on MarketPlace on the AHA website. The average on these 1,074.25 registered animals comes in at \$4,888 as 902.25 bulls averaged \$5,146 and 170 registered females averaged \$3,596. During this same time 411 commercial Hereford-influenced females both open and bred hit the average board at \$1,672. The above figures don't include the sales figures from the Mile High Night Sale.

We can all agree these are solid numbers to begin this New Year. Without looking back, they probably are not quite as good as the previous two years but still in the same light are solid.

The above numbers are a good barometer of the present Hereford sales trend and might be forecasting the map that lies ahead for registered breeders. You are encouraged to keep up with the sale results by going to the AHA website, click on MarketPlace and then scroll down to sale results. This is a great way to keep up with the registered Hereford market. I also want to invite you to follow the BuyHereford Facebook page, also found on the AHA website. Simply click on the "follow us on Facebook" as this is another way to keep up with the sale results and other AHA activities.

"The above numbers are a good barometer of the present Hereford sales trend and might be forecasting the map that lies ahead for registered breeders."

Had a recent conversation with a breeder of a different color cowherd, and he smiled and said, "There are sure a lot of bulls for sale this spring—no matter what color your heart desires." This comment says volumes as we move on through the spring. It is a good challenge for those in this business

"...what the baldie calf brings to the marketplace..."

to concentrate on making the phone calls and visits to past customers as sale time approaches. It also points out that marketing to new customers, particularly to the black cowherd, might be a good approach. Most Hereford breeders are well versed on the benefits of a black baldie calf. If there is a

time to preach to the masses on what the baldie calf brings to the marketplace it may be this spring.

While in Denver this year I had the opportunity to stop by the Journagan Ranch/Missouri State University pen in the yards. The bred heifers were very good and attracted quite a bit of interest. The one thing that impressed me, however, was the exposure these young students were getting while attending this event. Not only were they visiting with the many cattlemen that came through the pen, they were also making contacts for their futures in the cattle industry. The several times I passed by their pen, it was always in great shape and presented a positive image for the cattle, the program and the students themselves. I also want to thank them for helping with the Mile High Night Sale by providing a pick-up to help with moving the sale ring trailer and the students themselves pitching in to set-up and teardown the Mile High Night arena. Great crew—thank you.

NJHA Fed Steer Shootout

A new program just getting ready to begin is the NJHA Fed Steer Shootout being held at the Gregory Feedlot in Tabor, IA. This program is open to junior members and requires a Hereford or Hereford influenced steer that qualifies to the CHB Live Animal Specifications. The steers will officially be weighed to start the program the first week of February. They will be managed in a feedlot atmosphere and once harvested a

report will be returned to the juniors. Feedlot performance along with carcass information will be made available to the participants. All costs will be financed by the feedyard through the competition, with the total expenses deducted from final payment at the conclusion of the contest. This first year program will have 65 steers on feed.

It is interesting to note that several steers were sponsored by breeders for several juniors. This is a great way to get a local junior involved with the Hereford breed and learn much more about the cattle feeding business. The information obtained can also be of great benefit to the breeders and junior members involved by finding out what their genetics will

do in the feedlot environment. This program has great potential from learning and junior involvement standpoints. Put this on your fall 2017 list of opportunities to get involved with. Contact Trey Befort at the AHA office, 816-218-2280, to learn more.

The spring sale run has begun, and I will be attending quite a few sales over the next few months. If I can ever be of assistance in finding Hereford genetics for your operation give me a call 785-633-3188. Also, if you would like for me to stop by your operation this spring, it would be my privilege—just give me a call. Hope the spring calving season goes better than you expect.

— Joe Rickabaugh, AHA Director of Field Services

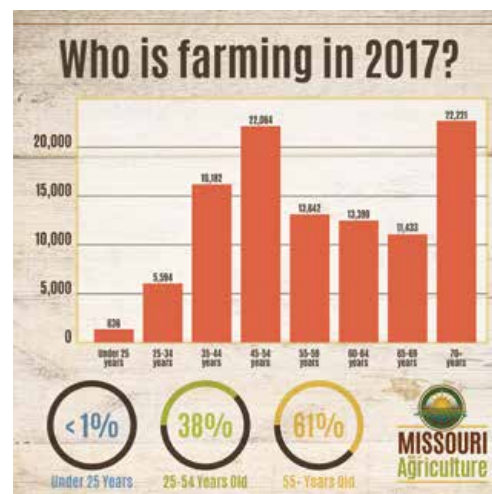


Image courtesy of the Missouri Department of Agriculture.

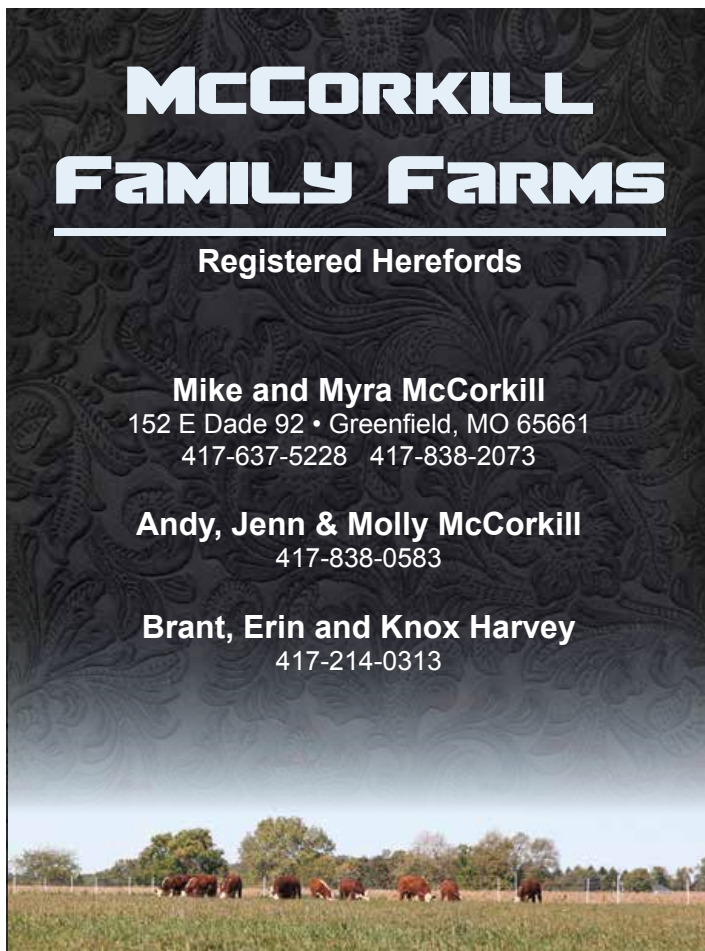
McCORKILL FAMILY FARMS

Registered Herefords

Mike and Myra McCorkill
152 E Dade 92 • Greenfield, MO 65661
417-637-5228 417-838-2073

Andy, Jenn & Molly McCorkill
417-838-0583

Brant, Erin and Knox Harvey
417-214-0313



it takes
TEAMWORK
to make the
DREAM WORK

GKB CATTLE ONLINE SALE, APRIL 19TH ON SMARTAUCTIONS.CO

GARY & KATHY BUCHHOLZ - WAXAHACHIE, TX

Gary Cell: 214-537-1285 :: Kathy Cell: 214-537-1306

Email: gary@gkbcattle.com :: Web: gkbcattle.com

Herdsmen: Jay Creamer 254-707-2199 :: Operations: Matt Eskew 479-721-9883 :: Cowman: Zach Vigil 303-929-8957

Update

The Missouri Hereford Association (MHA) held their Annual Banquet on December 3. The Hereford Women of Missouri served a meal consisting of hash-brown casserole, green beans, corn, salad, rolls and as always Certified Hereford Beef ribeye steaks. We served more than 150 great Hereford people from around the state. We would like to thank Bob Bagnell, Steven Steiner and Larry Crutsinger for cooking the steaks. Great job! Thank You!

While the December MHA meeting was being held, the Hereford women also provided the snacks and assorted drinks for those in attendance.

During the awards ceremony of the banquet we also crowned a new Hereford Queen. Miss Rachel Bagnell will proudly serve in that capacity. We welcome Rachel! She is the daughter of our Secretary, Tonya Bagnell, and her husband Bob. As always we thank the MHA for their continued support of our group and all the Hereford Breeders across the state. We are thankful for the best Hereford breeders in the business.

Don't forget to check out our Facebook page. It is a great tool for sharing information and communicating with other women in our breed from across the state. If you're not a member yet, you can join at any time. We would love to have you. Just send your \$20 dues to Marijane Miller of Miller Herefords. It's that easy!

The Hereford Women of Missouri accept applications for our scholarship. It is due when the

other scholarships are due October 15 of each year. Please take the time to fill it out. More money for college is always a plus!

Our next meeting will be at the MJCA All-Breeds Show, June 9-11. We will be making plans to help the juniors going to Louisville for the JNHE coming up in July! At the Missouri State Fair, we will also meet again.

I miss being involved in the show season as much as I was at one time. We wish you the very best, safe travels and see you around the barn!

– *Barb Steiner* Hereford Women of Missouri President

Hereford Women of Missouri Officers

President – Barbara Steiner, Union Star

Vice President – April Miller, Lee's Summit

Secretary – Tonya Bagnell, Slater

Treasurer – Marijane Miller, Lebanon
Mail \$20 Hereford Women of Missouri dues to
20500 Sioux Drive,
Lebanon, MO 65536

Queen Chairman – Katherine Fuller, Weston

By-Laws Chairwoman –
Gretchen Thompson, Rolla

Find us on 



Rachael Bagnell
2017 Missouri Hereford Queen

Missouri
Hereford
Queen

On December 3, 2016 Rachael Bagnell, the sixteen-year-old daughter of Bob and Tonya Bagnell, was crowned the Missouri Hereford Queen at the annual state banquet

held in Sedalia, MO. Rachael will represent the Missouri Hereford Association (MHA) in promoting the Hereford breed at many local, state, and national cattle shows throughout the next the year. Rachael has been showing Hereford cattle on the local, state and national levels for six years. Her sister, Shelby Bagnell, was the 2015 state queen. Rachael is looking forward to following in her sister's footsteps in representing the MHA as their 2017 queen.

Rachael is involved in many organizations including Slater FFA (2nd Vice-President), Slater National Honor Society, Slater High School Student Council (Secretary), Saline County Junior Leaders (President), Orearville 4-H (President), Slater Cheerleading and Slater Future Business Leaders of America (Secretary). After graduation Rachael plans on attending college, majoring in Agricultural Education.



The Ranch Kitchen

Fort Worth Hamburger Stew

Ingredients

- 2 pound(s) ground hamburger, cooked until all pink is gone
- 1 large onion, diced
- 2 stalks celery, chopped
- 2 carrots, chopped
- 4 red potatoes, chopped in cubes
- 5-6 cups water
- 1 can, stewed tomatoes (small, chopped variety)
- 1 can Rotel Tomatoes with Green Chilis

- 1-2 tsp garlic salt
- 1 tsp Tony Chachere's Creole Seasoning
- 3 tsp chili powder
- 1 tsp black pepper
- 3 tsp oregano
- 3 tsp soy sauce
- 1/4 cup ketchup

Instructions

1. Chop onions and add to cooking pot.
2. Brown ground hamburger with onion on medium heat until meat is no longer pink.
3. Drain all liquid (grease) from browned hamburger meat and onion.
4. Add cans of tomatoes, then water, potatoes, carrots and celery.
5. Add all seasonings (garlic salt, Tony C's Creole Seasoning, black pepper, chili powder and oregano) and blend/stir well.
6. Add ketchup and soy sauce and stir well.
7. Bring soup up to a boil on high heat and reduce to low heat. You want your soup to continue to cook on a low boil, slight bubble and not rolling high boil.
8. Cover pot and continue to cook on low heat for 45 minutes or until potatoes and carrots are cooked through. Make sure that you are stirring the pot from time to time.

Cook's Note: Serve in large bowls with saltine crackers, my Mozarella Bread or cornbread.

The Ranch Kitchen Original Recipe - Alise Nolan | theranchkitchen.com

FTF

Falling Timber Farm

BULL & FEMALE SALE

8th Annual Saturday, March 18th, 2017
Live Auction 5:30 pm at the Farm

SELLING 40 BULLS AND 40 FEMALES

30 Top Cut Yearling Hereford Bulls with Genomic-Enhanced EPD's

18 Month Old Hereford Bulls 5 Year Old Cows w/ Heifer Calves Yearling Hereford Heifers
18 Month Old Angus Bulls Fall Bred Cows w/ Heifer Calves Fall Bred Hereford Heifers



FTF LADY RANGR 2211Z

*Selling 5 Year Old Cows
with Heifer Calves!*



FTF Powerhouse 629D

FTF Porterhouse 455B x DR World Class 517 10H
CED BW WW YW Milk M&G CHB
7.7 -0.3 52 81 29 54 24



FTF Powerhouse 646D

FTF Porterhouse 455B x MSU TCF Revolution 4R
CED BW WW YW Milk M&G CHB
5 1.2 63 100 28 59 31



FTF Powerhouse 676

FTF Porterhouse 455B x SHF Rib Eye M326 R117
CED BW WW YW Milk M&G CHB
5 1.6 63 100 27 58 34



FTF Powerhouse 679D

FTF Porterhouse 455B x Lambert Remedy 2030 75R
CED BW WW YW Milk M&G CHB
5.5 3 69 104 30 65 33



FTF Revolution 655D

MSU TCF Revolution 4R x DR World Class 517 10H
CED BW WW YW Milk M&G CHB
4.3 2.7 65 101 29 61 31



FTF Fringe Benefit 698D

MR Francesco 491B x FTF Prospector 145Y
CED BW WW YW Milk M&G CHB
5.6 1.1 64 97 26 58 33



FTF Porterhouse 622D

FTF Prospector 145Y x MSU TCF Revolution 4R
CED BW WW YW Milk M&G CHB
2.9 3.1 69 113 26 61 37



FTF Leverage 6429D

FTF Logic 339A x Grandview 70Oaks Sonora 145R
CED BW WW YW Milk M&G CHB
4.6 2.9 54 90 25 51 27



FTF Porterhouse 662D

FTF Prospector 145Y x TH 122 71I Victor 719T
CED BW WW YW Milk M&G CHB
1 4.3 78 121 34 73 37

FTF

call or email for a catalog or view videos online

Glenn & Yvonne Ridder John, Heidi, Madi, & Ben Ridder Jeremy Couch
636-358-4161

www.fallingtimberfarm.com



Like us on
facebook

Falling Timber Farm

Marthasville, MO

DVAuction
Broadcasting Real-Time Auctions

Update

Spring is almost here! I hope 2017 has treated everyone well so far and the winter weather hasn't gotten to the best of you. Calving season is slowly coming to a close for some but for others it's just getting started. Whichever group you might be in, I wish you the very best of luck with your new calf crop and ask that you continue posting pictures on social media! A newsfeed full of white-faced calves can make just about anyone a little happier.



Ellen Jackson
Missouri Junior
Hereford Association
Reporter

First, I would like to extend a huge thank you on behalf of the junior association to Wyatt Russell of Jackson, MO, and Hanna and Emily Gregory of Houstonia, MO, for purchasing our steer and heifer lots at the Missouri Opportunity Sale in December. Also, we would like to thank the Doss family for donating the Priefert working chute and all those who purchased tickets. We were able to raise more than \$1,300! This will be used to help cover the cost of prizes at shows throughout the summer as well as Junior National Hereford Expo (JNHE) expenses.

As many of you know the highlight of every junior's summer is junior nationals! This year we will be "Showing for the Roses" in Louisville, Kentucky, on July 15-21. If you've never been, you should consider going this year. It's a fun week full of great Hereford cattle, wonderful people, and plenty of activities to keep even the fastest moving kids entertained. If you have any questions about attending you can contact any of our board members or junior advisors. Otherwise, plan to attend

Missouri Junior Hereford Association Officers

President – Julie Choate
Vice President – Anna Roth
Secretary – Makayla Reynolds
Treasurer – Brooklyn Adam
Mail \$10 Missouri Junior Hereford Association dues to
 735 SE Wexford Rd, Lathrop, MO 64465
Reporter – Ellen Jackson
Directors – Shelby Bagnell, Britney Adam,
 Dalton Reynolds and Issac Rhode
Advisors – Brad and Sherry Hurst
 Jimmie and Andrea Butler
 Mary Roth

our meeting at the Missouri Cattlemen's All-Breeds Show in Sedalia on June 10, following the Hereford show. We will discuss details about JNHE such as decorating ideas, stall set-up, traveling arrangements, and contests. As well, we will be forming some teams and committees to begin preparing for the show. Join us at the meeting with some paper for notes (you'll be glad you did), creative ideas, and a volunteer's heart!

We are in need of new advisors! Feel free to contact one of our board members if you have any suggestions or are interested in possibly serving our association. If you can handle this role, please consider volunteering for it. We will also be discussing, voting on, and electing a new set of wonderful advisors at our meeting in June.

Enjoy the spring weather, keep posting calf pictures, and I will see you in June!

– Ellen Jackson, Missouri Junior Hereford Association Reporter

Find us on



2017 Junior National Hereford Expo

One of the largest junior breed shows in the U.S., the Junior National Hereford Expo (JNHE) is the highlight of the NJHA's summer activities. It is held every July, and is co-sponsored by the AHA and affiliated junior and state Hereford associations.

Known to many as the ultimate family vacation, this summer show provides an opportunity for competition between junior members and their cattle projects. A hands-on type of program for youth provides educational, leadership and motivational forums. During the event youth can participate in 22-skill based contests.

The 2017 JNHE will be held in Louisville, KY, July 15-21.

Monday, July 17, families can join a tour to Churchill Downs and the Louisville Slugger Factory. There will also be clinics and demonstrations throughout the week for juniors to learn more about nutrition and fitting.

To view a complete schedule of the event, visit jrhereford.org.

GREGORY POLLED HEREFORDS Since 1932

JD Gregory

19469 Houston Road
Houstonia, MO 65333
660-568-3559

Kevin & Barbara Gregory

19620 Houston Road
Houstonia, MO 65333
660-568-3582 660-620-3585
gphfhereford@gmail.com

Bulls for Sale!
Come see us for
your next herd sire!



Visit Gregory Polled
Herefords
on Facebook

The Cowman's Kind XX

Our 65th
Year

BULL AND FEMALE SALE

**SELLING
86 LOTS**

50 BULLS
25 Angus
20 Polled Herefords
5 Charolais

36 FEMALES
10 Angus
15 Polled Herefords
5 Charolais
6 Commercial

MARCH 25, 2017

Saturday • Noon (CDT)
At the Farm • Lexington, TN
Angus • Hereford • Charolais



CMF 63U COMMANDER 190C

10/1/2015

Sire: Gerber Anodyne 001A

Dam: CMF 769P Sara 63U

CED +4.4, BW +1.1, WW +62, YW +93,
Milk +29, REA +0.73, Marb +0.24

★ Act BW 70 • Adj. 205 Wt. 725

★ Individual ratios: 96 BW, 111 WW, 104 YW, 111 REA



CMF 769P SARA 63U

★ Dam of 190C



CMF 70Z CHAMBER 169C

9/10/2015

Sire: Gerber Anodyne 001A

Dam: CMF 11U Dominette 70Z

CED +4.6, BW +1.0, WW +63, YW +90,
Milk +31, REA +0.49, Marb +0.22

★ Act BW 66 • Adj. 205 Wt. 791

★ Individual ratios: 96 BW, 117 WW, 101 YW, 100 REA, 100 Marb



CMF 11U DOMINETTE 70Z

★ Dam of 169C



CMF 156Y CANDIDATE 210C

10/18/2015

Sire: KCF Bennett Encore Z311 ET

Dam: CMF 876S Rose 156Y

CED +2.3, BW +2.6, WW +71, YW +112,
Milk +26, REA +0.49, Marb +0.41

★ Act BW 70 • Adj. 205 Wt. 719

★ Individual ratios: 99 BW, 111 WW, 108 YW, 108 REA, 107 Marb



CMF 878S ROSE 156Y

★ Dam of 210C



CMF 59Z CONFIDENCE 204C

10/13/2015

Sire: C&L CT Federal 485T 6Y

Dam: CMF 121W Sara 59Z

CED +3.4, BW +2.7, WW +70, YW +109,
Milk +22, REA +0.69, Marb +0.15

★ Act BW 70 • Adj. 205 Wt. 738

★ Individual ratios: 109 WW, 107 YW, 106 REA



CMF 121W SARA 59Z

★ Dam of 204C

EPDs as of 1/22/17



Rob Helms (731) 571-8213

Heath Helms (731) 614-3979

Steve or Hayden Helms (731) 968-2012

Email: candymeadowfarms@hotmail.com

565 CANDY MEADOW FARM ROAD • LEXINGTON, TENNESSEE 38351

**For sale book and
more information
contact**

Candy Meadow Farms or



JDH MARKETING SERVICES LLC

Jack D. Hedrick

(904) 613-4261

jdh@cableone.net

Auctioneer: Eddie Burks TFL # 4123, TAL # 4990

To view sale book online go to www.hereford.org.

Life is Simple

Ever since my wife became involved in large-scale egg production (she currently has eight hens), she purchases a few chicks each spring to replace the older hens that have ceased laying. Judy usually treks to the local farm supply store during their annual spring 'chick days' and purchases a half-dozen or so. We've had great luck with them in the past and can usually count on them to begin laying by late fall.

This poultry project belongs entirely to my wife. Other than eating them and their eggs, I don't like chickens. As a result, I seldom go out to her chicken house unless there is a problem with the feeder, water bowl, or electricity for the lamps. Such was the case late last summer when Judy asked me if I would repair their waterer before we left for vacation. Being the loving husband that I am, I agreed.

When I returned to the house, I asked my wife if the newest chickens had started laying. She replied that they had not, but she expected them to start anytime. "Well," I began, "there are at least two of them that never will lay a single egg."

"Oh, no, are they dead?"

"No. They are roosters."

In several years of purchasing chicks, I guess we've been lucky to have never gotten anything but pullets before. But, being the inquisitive person that she is, Judy wondered how she could tell the difference when the birds were babies, so that she could check them herself, next year.

I informed her that I did not take a poultry production class in college, but I remember from my high school days in FFA that there was a lot of squeezing, feeling, and close visual examination involved in sexing chicks (probably the reasons for my lack of fondness for the critters) and that job was probably better left to the experts because I didn't have a clue.

At about the same time Judy purchased the young chicks, she also obtained two young kittens to replace an old cat that had called our farm, home, for close to fifteen years. When she picked them up from the neighbors, she asked me to determine whether they were male or female. I assured her that they were both females and we would have to take them to the vet in a couple of months, lest we have dozens of cats in a couple of years. She went ahead and scheduled the procedure.

A couple of days before the scheduled veterinarian visit, Judy asked me if I was certain that the now, three-month-old cats were, indeed, female. Even though I hadn't examined them lately, I told her I was pretty sure I knew the difference between male and female cats—and I told her in a fairly smug manner.


"Then what are those things protruding from their derrieres?"

"Oh, I see. I guess you better cancel the visit to the vet's office."

"I guess you didn't take the cat production class, either."




Jerry Crownover



**GREGORY
HEREFORD
RANCH**

Michael, Amy Hanna,
Emily & Sutton Gregory
10851 Range Line Rd.
Houstonia, MO 65333
660-287-1616

Robert & Sharon Gregory
12389 Chamberlin Rd.
Houstonia, MO 65333
660-620-4020



Two-year-old bulls
for sale

Herd Sires: SRF City Limits ET, Churchill About Time 0223X,
LJR MSU 317X Zacherie 216Z, MCG Churchill Time 324A
Cow Herd: Trust, Hometown, Kilo, Radar, Logic, Bright Future
AI Sires: Twentytwelve, Trust, Hometown

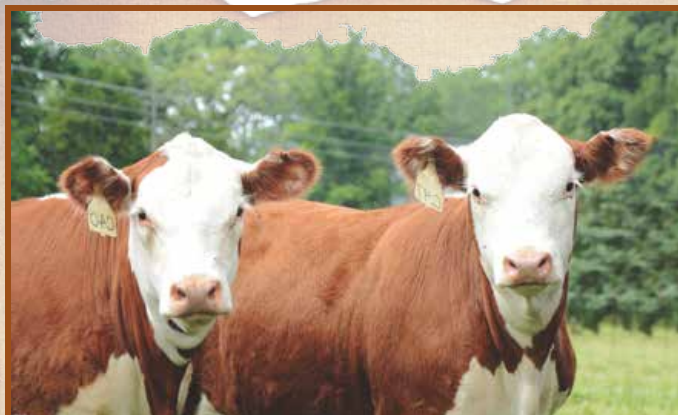
MISSOURI
now ranks

2nd
for
calf crop



MISSOURI
Agriculture

Image courtesy of the Missouri Department of Agriculture.



**WEBSITES
ADVERTISEMENTS
PHOTOGRAPHY
SOCIAL MEDIA
EMAIL MARKETING**

*Rural
Route*
CREATIONS

www.ruralroute creations.com

Cassie Dorran
403-507-5953
cassie@ruralroute creations.com

Jocelyn Washam
417-838-5546
jocelyn@ruralroute creations.com



VETERINARY DIRECTIVE

Feed

How would you quickly define VFD to someone who didn't know anything about it?

Q:

A: It's a topic that a lot of people are talking about. A Veterinary Feed Directive (VFD) is a document issued by a veterinarian authorizing the use of antibiotics that are classified as VFD drugs. Prior to January 1, 2017 many of the antibiotics used in feeds were available over the counter; meaning a producer could go into a local feed distributor and acquire a trace mineral mix that contained Chlortetracycline without any restrictions. On January 1, a large proportion of the feed antibiotics transitioned to VFD drug status and now a VFD is required before a producer can acquire that same medicated mineral. These changes impacted antibiotics such as chlortetracycline (Aureomycin for example) and chlortetracycline/sulfamethazine combination (AS-700 for example).

For the show cattle industry, are there any specific changes breeders need to pay close attention to?

Q:

A: The changes will effect everyone equally. Some people haven't been exposed to the concept of extra-label drug use which is using a drug in a way it is not specified on the label. As an example, producers often use chlortetracycline in the feed to control pink eye problems in the summer. However, chlortetracycline is not approved for control, prevention or treatment of pinkeye therefore it is not permissible to use it for this purpose.

How important is a Veterinarian-Client-Patient Relationship and will we see this becoming more important in the future?

Q:

A: A Veterinarian-Client-Patient Relationship (VCPR) is required before a veterinarian can issue a VFD. A VCPR means the veterinarian is acquainted with the care and keeping of the animals by virtue of examination or timely visits to the premises where the animals are kept. The veterinarian must also determine if there is a need for the antibiotic. The establishment of the VCPR may lead to further conversations about management strategies that can minimize or eliminate the need for an antibiotic altogether.

Dr. Craig Payne, Associate Extension Professor for the University of Missouri Veterinary Medical Extension and Continuing Education, answered a few common questions regarding the new Food & Drug Administration ruling for Veterinary Feed Directive.

NATIONAL WESTERN STOCK SHOW

January 13, 2017 | Denver, CO | Hereford Pen & Carload Show
Judges: Dale Micheli, WY; Travis Pembroke, OK; Ryan Rathmann, TX



Champion Yearling Pen of Heifers
AbraKadabra Cattle Co.,
Columbia, MO



Champion Pen of Heifer Calves
AbraKadabra Cattle Co.,
Columbia, MO



Champion Pen
of Junior Yearling
Heifers
Journagan
Ranch/Missouri
State University,
Springfield, MO

January 12-14, 2017 | Denver, CO
Hereford Female Show
Junior Judge: Brandon Callis, OK
Open Judges: Bill Conely, MO;
Associate Judge: Kyle Conely, OK



Reserve Division Champion
Open & Junior Shows
BPH 2214 BOURBON 0033C
DOB: 10/3/2015 • Sire: CHAC MASON 2214
Bred by: Joel Butler, Republic, MO
Owned by: Katlyn Tunstill, Fayetteville, AR

ALL AROUND BREED LEADERS



MOHICAN BAR STAR **REVVED UP** 78A
29HP0928 AHA 43386234



MPH 10H **JUICE BOX** Z3
29HP0926 AHA 43325046

To add these breed leading genetics to your herd, contact
your local ABS Representative or call **1.800.ABS.STUD**



©2016 ABS Global, Inc. • 1525 River Road, DeForest, WI 53532 • 608-846-3721 • www.absbeef.com



*Responsive Cattle*TM



MULTIMIN[®] PROVEN IN SEVERAL UNIVERSITY STUDIES:

MORE RESPONSIVE BULLS:

- ✓ Better Bull Test Scores
- ✓ Increased % Progressive Sperm Motility

MORE RESPONSIVE COWS:

- ✓ Greater Overall Pregnancy %
- ✓ Greater Timed-AI pregnancy %
- ✓ Compressed Calving Distribution
- ✓ Greater Pregnancy % in Low Body Condition Score Cows (e.g. during drought)
- ✓ Increased Body Condition Score Gain Between Calving and Breeding

MORE RESPONSIVE HEIFERS:

- ✓ Greater Pregnancy % to Timed-AI After 14d CIDR-Protocol
- ✓ Greater Pregnancy % to Timed-AI and Exposure to Bulls
- ✓ Greater Pregnancy % in Heifers Synchronized for Timed Embryo Transfer

Study data available from **MULTIMIN[®] USA**



Sure Trace Mineral Supply by Timed Injection

WWW.MULTIMINUSA.COM

1.866.269.6467 | 1.970.372.2302



R_x REQUIRED

Membership Update

Juniors recognized by Missouri State University

The 78th Annual Darr School of Agriculture Scholarship and Awards Banquet was held by Missouri State University (MSU) on November 2, 2016, in Springfield, MO. Two Missouri Junior Hereford Association members were awarded at the night's event.

Left: Julie Choate receiving awards at the MSU School of Agriculture Banquet. Right: Accepting her award from the Greene County Farm Bureau is Makayla Reynolds.



Julie Choate, Pleasant Hope, MO, is majoring in Agricultural Communications and was awarded the Citizen Leadership Award along with the Douglas W. Darr Leadership Scholarship.

Receiving the Greene County Farm Bureau Scholarship was Makayla Reynolds, Hunsville, MO, majoring in Agriculture Business Marketing and Sales.

Obituary

Floyd Leon Reynolds, 75, of Huntsville, MO, passed away Thursday, November 10, 2016 at Meadow Ridge Estates in Moberly, MO.

He was born September 24, 1941, a son of Oscar Rolland and Ella Maude (James) Reynolds. On October 23, 1993 in Overland Park, KS, he married Sharon Reon (Fletcher Peppel) Reynolds who survives of the home.

Floyd was a member of the Huntsville First Christian Church where he had served as an Elder, a member of the Missouri Hereford Association and was inducted into the Hall of Fame in 2011. Floyd raised and showed Hereford Cattle since he was 19-years-old and won several awards doing this. He worked for John Deere in Moberly, MO, and was owner operator of the Moberly Packing Company until 1989.

Starting September of 1990, Floyd managed the Smoked Meats Department at the Balls Food Stores in Kansas City. He served on the Westran School Board for many years and enjoyed antiquing, trout fishing, spending time with his family and watching his grandchildren play sports and show cattle.

Survivors include his wife of 23 years, and children – Dan Reynolds and his wife Rose of Huntsville, MO; Matt Reynolds and his wife Barb of Huntsville, MO; Mark Reynolds and his wife Lara of Moberly, MO; Ellen Wortham and her husband Greg of St Louis, MO; Steven Peppel and his wife Diane of Overland Park, KS, and Janet Bruno of Overland Park, KS.; one brother, Jim Reynolds, and his wife Candice of Clifton Hill, MO, 12 grandchildren and 3 great-grandchildren, Roxanne Warren and her daughters Alexis, Kailyn, and McKinley; Danielle Reynolds, Dalton Reynolds, Tye Reynolds, Makayla Reynolds, Brooke Reynolds, Quincy Reynolds, Sam Wortham, Shannon Parkison, Ryan Bruno, Wesley Peppel, and Lauren Peppel.

Missouri Juniors Receives Jack & Donna Vanier Family Scholarship

Ten National Junior Hereford Association (NJHA) members were awarded a \$10,000 Jack & Donna Vanier Scholarship Oct. 28 at the American Hereford Association (AHA) Hereford Honorees Reception during the AHA Annual Membership Meeting in Kansas City, Mo. These scholarships were 10 of 23 awarded through the Hereford Youth Foundation of America (HYFA) totaling more \$142,000.

The Vanier Family of CK Ranch in Brookville, Kan., donated 10 scholarships totaling \$100,000 to youth who demonstrate a commitment to higher education and who have overcome obstacles in their lives.

Shelby Bagnell, Slater, Mo., is a sophomore at the University of Missouri-Columbia majoring in agricultural education. She plans to pursue a career as an agricultural education instructor to improve the education of agriculture in future generations.

Britney Adam, Plattsburg, Mo., is a sophomore attending Iowa State University with a concentration in agricultural studies. She currently serves on the Missouri Junior Hereford Association board and is a recipient of the American FFA Degree.

The Hereford Youth Foundation of America is a 501 (c) 3 not-for-profit. It's mission is to support scholarship, education and leadership activities within the Hereford breed. For more information about the HYFA, visit HerefordYouthFoundation.org or contact the AHA at 816-842-3757.

Ten outstanding NJHA members received a \$10,000 Jack and Donna Vanier Family Scholarship. From left to right: Bruce Everhart, 2016 HYFA vice president; Shelby Bangell, Slater, Mo.; Briana Katzenberger, Monroe, Wis.; Brianne Nelson, Fredonia, Kan.; Britney Adam, Plattsburg, Mo.; Calah Covey, Hammill, S.D.; Katie Nollis, Bassett, Neb.; Keayla Harr, Jeromesville, Ohio; Kelsey Stimpson, Parma, Idaho; Lucas Stumpf, Columbia, Ill.; and Madison Goss, Rio Oso, Calif.

Marriage Announcements

Devann Renee Gregory of Houstonia, MO, and Benjamin Michael Catlett of Corder, MO, were married at 5 p.m., December 31, 2016 at Hopewell Baptist Church.

The bride is the daughter of Kevin and Barbara Gregory and the groom is the son of Ronald and Michelle Catlett, of Blackburn, MO.

Ben and Devann will reside in their home outside of Houstonia.



On Saturday December 10, 2016 Larry Day and Pam Richards exchanged vows at their residence with a surprise ceremony for their guests. They currently reside at Day's Family Farm in Pilot Grove, Missouri.



America's Convenient AI Brand

CRR 109 American Made 310



CRR Catapult 109 x CRR Colorado 433
BW WW YW MM M&G FAT REA MARB
1.2 61 91 20 50 0.025 0.50 0.11

PHH PCC 812 True Grit 002



CRR About Time 743 x KJ 520E Victor 417L
BW WW YW MM M&G FAT REA MARB
2.6 56 82 31 59 -0.052 0.73 -0.16

NJW 73S M326 Trust 100W ET



KCF Bennett 3008 M326 x PW Victor Boomer P606
BW WW YW MM M&G FAT REA MARB
3.7 67 120 37 70 -0.049 1.29 0.18

JDH 20R Cracker 26U 26C ET



AH JDH Cracker Jack 26U x PW Victor Boomer P606
BW WW YW MM M&G FAT REA MARB
3.5 39 59 26 46 0.033 0.33 0.16

H H Perfect Timing 0150 ET



CRR About Time 743 x HH Advance 3196N
BW WW YW MM M&G FAT REA MARB
-0.9 46 84 22 45 0.071 0.26 0.01

H WCC/WB 668 Wyarno 9500 ET



TH JWR SOP 166 57G Tundra 63N x C-S Pure Gold 98170
BW WW YW MM M&G FAT REA MARB
3.0 43 77 25 47 -0.044 0.38 0.11

R Leader 6964



Hyalite On Target 936 x MSU TCF Revolution 4R
BW WW YW MM M&G FAT REA MARB
-0.4 67 116 24 58 0.058 0.79 0.23

H Excel 8051 ET



GO Excel L18 x C-S Pure Gold 98170
BW WW YW MM M&G FAT REA MARB
4.8 57 88 34 62 -0.048 0.68 -0.05

Churchill Stud 3134A



KJ HVH 33N REDEEM 485T x GOLDEN OAK OUTCROSS
BW WW YW MM M&G FAT REA MARB
3.1 68 112 23 57 0.084 0.75 0.20

SULL TCC Mr Custom Made 340 ET



CRR About Time 743 x Ankonian Midas 72
BW WW YW MM M&G FAT REA MARB
3.3 46 79 25 48 -0.059 0.62 -0.04

AH JDH Cracker Jack 26U ET



NJW 1Y Wrangler 19D x SHF Interstate 20X D03
BW WW YW MM M&G FAT REA MARB
3.2 51 76 25 51 0.030 0.32 0.33

TH 60W 719T Victor 43Y



TH 122 711 Victor 719T x NJW FHF 9710 Tank 45P
BW WW YW MM M&G FAT REA MARB
-0.2 48 59 28 52 -0.072 0.46 0.01

Purple MB Womanizer 14U ET



CH Enuff Prophet 2913 x C-S Pure Gold 98170
BW WW YW MM M&G FAT REA MARB
4.8 72 104 23 59 0.028 1.03 -0.06

WLB Lego 83T 90X



WLB Eli 10H 83T x WLB Global 72M 50S
BW WW YW MM M&G FAT REA MARB
1.0 56 87 22 50 0.001 0.55 0.03

CRR 719 Catapult 109



TH 122 711 Victor 719T x THM Durngo 4037
BW WW YW MM M&G FAT REA MARB
2.7 67 103 26 60 -0.005 0.44 -0.03

NJW 73S W18 Hometown 10Y ET



SHF Wonder M326 W18 ET x NJW P606 72N Daydream 73S
BW WW YW MM M&G FAT REA MARB
2.1 61 103 33 64 0.050 0.57 0.44

CRR 028X Screenshot 511



Churchill Sensation 028X x NJW 98S 100W Handshake 83Y
BW WW YW MM M&G FAT REA MARB
0.8 62 103 42 72 0.080 0.38 0.32

Chac Mason 2214



CRR ABOUT TIME 743 x GKB 31 GRACE 7100
BW WW YW MM M&G FAT REA MARB
5.2 57 91 25 53 -0.052 0.67 0.00

WORR Owen Tankeray Y79D



NJW FHF 9710 TANK 45P x BR KLD ROSE MARIE 079 ET
BW WW YW MM M&G FAT REA MARB
2.9 54 85 26 53 -0.039 0.51 0.77

DeLHawk WRB Truth 713 ET



DeLHawk Kahuna 1009 ET x Purple Tonic 10M
BW WW YW MM M&G FAT REA MARB
6.5 64 100 24 56 0.005 0.81 -0.02

RB 6X Take A Chance 306C



Elm-Lodge Explorer 6X x MHPH 80P Tonka 207T
BW WW YW MM M&G FAT REA MARB
2.9 40 67 15 35 -0.018 0.42 -0.02

MAV Premonition 414B



BR MR KUTTER 3011 ET x KJ CBL J119 VICTORY 258S ET
BW WW YW MM M&G FAT REA MARB
6.1 48 75 15 39 0.003 0.25 -0.08



866-356-4565
www.cattlevisions.com

H H Fast Forward 2268Z ET



KJ HVH 33N Redeem 485T x HH Advance 3196N
BW WW YW MM M&G FAT REA MARB
0.5 57 91 22 51 0.082 0.54 0.25

TH 400U 32X Trump 206Z



HAROLDSONS TRUMP 18R ET x TH 905F 45P PRIMROSE 400U ET
BW WW YW MM M&G FAT REA MARB
4.5 53 81 25 52 -0.025 0.65 0.06

College of the Ozarks

Hereford Production Sale

November 25, 2017

Noon • Point Lookout, Missouri

**Our students are the backbone of our operation and
we strive to raise breeding stock that are going to
work hard to make producers money!**

"A Tradition That Works"

Offering:

Service ready bulls
(2-year-olds and 18-month-old)

Yearling and Bred Heifers

Entire Spring Herd
(Spring Herd Dispersal)

Look for cattle sired by:

TH 49U 719T Sheyenne 3X

C&L Federal 6Y 3B

DRC 3238 King 4X

NJW 98S Durango 44U

KJ HVH 33N Redeem 485T ET

BOYD Worldwide 9050 ET

EFBEEF TFL U208 Tested X651 ET

COFO 719 Toby Z45

College of the Ozarks

Point Lookout, Missouri

Tammy Holder (417) 342-0871



A Passion for Agriculture

Building a family in the Polled Hereford industry has created a lasting legacy for generations to come in the Waters family.

Having a significant interest in 4-H and FFA programs through his own youth involvement, James A. Waters was committed to his children being involved within the agricultural youth programs. Through his own involvement he gained a passion for selecting, breeding and showing livestock, a love that would remain with him all his life, and clearly has been passed on to his children and grandchildren.

Attending Stet High School, James was active in the school's outstanding FFA program, one of the most respected programs for its time, winning the Missouri State Fair Governor's trophy for 17 consecutive years. Over the years, James showed Southdown and Hampshire sheep, barrows and several Angus steers. In high school he earned his FFA State Farmer Degree, was a member of the 2nd place state livestock judging team, showed a Missouri State Fair Grand Champion barrow in 1955 and won multiple state fair champion sheep awards in both the junior and open shows.

After graduation, James began farming near Stet, MO, where he would live and farm the remainder of his life. The farm was very diverse with row crops, fat cattle, a farrow-to-finish hog operation and commercial cattle. In 1966 he and Judy married and soon after purchased his parents' farm. Glen was their first born and Susan followed a couple of years later. The family of four ran the farm together, all taking part in the operating activities.

In an area where Hereford cattle were popular in the state of Missouri, James began his family's Hereford career in 1977 after contemplating a small registered herd to produce heifers for their family to show. Using Polled Hereford bulls in his commercial herd, James was drawn to the breed for this enterprise.

The first three Polled Hereford cow-calf pairs were purchased from Floyd and Dale Hawkins, marking the beginning of Waters Farms Polled Herefords. Glen's first show heifer was one of these calves. Another cow with a heifer calf was purchased from Glenkirk Farms' sale, slowly expanding the herd. The calf was significant as she would be Susan's first show heifer.

"Dad never hesitated to hand me the halter of a Polled Hereford heifer," said Susan. "One reason he felt good about the Herefords was their docility."

James loved working with registered livestock, planning AI matings and thinking about ways to expand the herd. He loved to meet other Polled Hereford breeders and to discuss cattle, breeding strategies and feeding, fitting and showing techniques with them. He thrived on competition and was always looking for ways to produce superior cattle and hogs.

1980 marked the family's first Junior National Polled Hereford show in Columbus, Ohio, a family tradition that would pave the way for decades to come. That first year, Glen and Susan each took one heifer, both making the top cut, which was the goal for most participants in those early years when classes could have upwards of 20-25 head. Glen recalls that trip being a game changer for their cattle program and they would compete in every Junior National they were eligible for after that.

"My favorite Junior National memory would have to be the 1989 show in Springfield, IL," said Susan. "We took four heifers, raising three of them. We stood no lower than third in class, and then went on to win Reserve Grand Champion Bred-and-Owned Female. It was the pinnacle of everything we had worked for."

That year Susan also remembers the state of Missouri competing in the finals of quiz bowl, a tradition of competing together as a team with your state. This tradition still continues today partially because of the legacy left by the Waters children.



James developed a passion for breeding and showing purebred livestock at an early age, showing multiple breed champions at the Missouri State Fair including this 1955 Champion Southdown Ram. James was known as one of the best sheep blockers, trimmers and showers of his time, working across the Midwest.

"It was that feeling of camaraderie, building relationships and working together," said Glen. "My only regret is that I wish I would have done even more."

For the family, attending Junior National was their yearly vacation. In those days with a smaller amount of cattle, Junior National was held all over the country, allowing families to visit new states and locations each year. The Waters family travelled to Reno, NV, Fargo, ND, Abilene, TX, and many other states through the years.

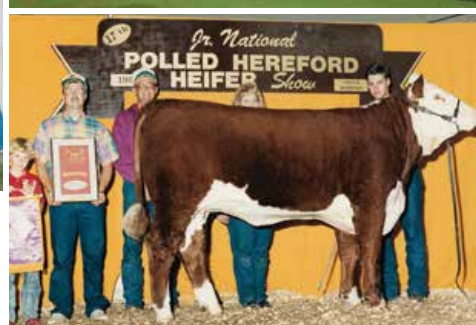
In the 1970s when James made the decision to raise Herefords, he would never have imagined it would be such a life-shaping choice for his family. Glen and Susan both served as officers of the Missouri Junior Polled Hereford Association, were members of the national champion Hereford quiz bowl team and were recognized with showmanship honors at multiple junior nationals. Susan served as chairman of the National Junior Polled Hereford Council, won the National Junior Merit award, served as Missouri Polled Hereford queen and was first runner-up in the National Polled Hereford Queen contest. Both were extremely successful in the FFA program, in part due to their Hereford cattle. At the University of Missouri, Glen and Susan were active members of several judging teams. These decisions greatly influenced by their lifetime of involvement in the livestock industry defined their future career paths and who they would marry.

Since 2010, Judy has attended the Junior National Hereford Expo as a grandmother instead of as a mother, a role her mother had always played as Glen and Susan were involved through their childhood.

Susan along with her husband, Jeff Rhode, and children, Isaac and Gavin, are now participating, and Glen, with his wife Kyla, and their



Left: Susan showing the Open Show Grand Champion Polled Hereford Heifer at the 1983 Missouri State Fair; Middle: James loved MU sports and attending events with Judy, Glen and Susan; Right: James getting Susan and WF Miss Sunny 206P ready to go into the show ring.



Top: 1989 Springfield, IL, Junior National Reserve Grand Bred-and-Owned Heifer honors awarded to Susan Waters

Top Right: The Waters family were recognized at the 2012 Missouri State Fair for James' service and dedication to the beef industry.

Bottom Right: RF Jessica 959Y winning Division V Champion at the 17th Junior National, Glen's final eligible year to show.

children, Kristin and Grant. The youngest of the grandchildren, Grant, is not old enough to participate; however, Glen says he's chomping at the bit to get in there with the bigger kids and take part.

In 2009, James passed away. The Waters grandchildren began participating in the Missouri Junior Hereford Association just a year later. He would have been so proud to see his family all together again at junior nationals, continuing the tradition that was so important to him and Judy as they raised their own children.

Through decades of hard work and breeding decisions, James and Judy built a cow herd using industry-leading bulls exclusively through AI breeding and selecting females from top breeders. The family has won the Missouri State Fair open Polled Hereford female show, champion female at the Eastern National and competed in the top of their classes at the North American International Livestock Exposition in Louisville and the National Western Stock Show in Denver. The family used their best cows in a strict embryo transfer program, allowing them to produce the superior genetics at a more rapid rate. Their most successful donor cow, WF Miss Sunny 206P, was able to raise many progeny over the years with both her natural and embryo calves, winning many state and national honors. Several of those offspring brought home purple banners from Junior Nationals for both Glen and Susan.

Bulls also were a significant part of the operation. Testing bulls in the University of Missouri Extension Performance Tested Bull Program

allowed the farm to easily calculate their development. Over the years, three bulls were grade A-, an elite honor among all breeds. One of these bulls WF Masterpiece, who also was a Sunny progeny, won his class at the National Western Stock Show, received champion honors at the Missouri Polled Hereford Association's Show-case sale and sold to Duvall Polled Herefords of Lockwood, MO.

The Waters family has developed critical relationships within the state through exhibiting cattle at the Missouri State Fair for eighteen years and at the Ozark Empire Fair, Illinois State Fair and the American Royal through many of those years. In 1983, the Missouri Polled Hereford Tour made a stop at the family farm, allowing the breeding program to be exposed to hundreds of attendees and developing relationships with Hereford breeders from multiple states.

The Waters family has been extremely active in taking leadership roles in the Missouri Hereford Association and other industry groups. The example was set by James and Judy to step up and "do your part" to make the world of agriculture better.

James served on the board of the Missouri Polled Hereford Association and supported and helped in many roles with the Missouri Junior Polled Hereford Association while his children were involved with the organization.

"We are a family that doesn't say 'no' often enough," said Susan. "We know the benefits of being involved in these industry groups and have the ability to help agriculture."

In the early '80s, James became a Pioneer seed sales representative in addition to his diverse farming duties. He was also very involved in the community,

serving multiple terms on the Stet school board. He helped to organize and served as an officer in both the Ray-Carroll County Line Pork Producers Association and the Stet Young Farmers Association, as well as being involved with state committees for the Missouri Young Farmers Association. Politics meant a lot to James, and so when fellow Missouri cattle breeders Jerry Litton and Glen Klippenstein ran for state-level political positions, James activity supported their campaigns.

For a number of years, James served on the Ray County MU Extension Board and the Ray-Clay FSA County Committee. He helped with the Stet Rural Fire Protection District, serving as a director.

Judy taught high school language arts in neighboring school districts for 30 years, but she was always by James' side through his farming endeavors. You could find her waking up every two hours to do the night checks during calving season, castrating and giving shots to baby pigs in the farrowing house and at the forefront in the childrens' applications and awards, assisting with proofreading. Something she still enjoys today is proofreading for a national breed publication. With her grandkids at the start of their own show cattle careers, she is always ready to help as they lead their heifers into the ring.

Accepting the Missouri Hereford Association Hall of Fame award at the annual meeting in Sedalia, Mo., was Judy along with Glen, Susan and their families.

"It is an exceptional honor for James to be inducted into the Missouri Hereford Association Hall of Fame," said Judy. "If he would have been alive, he would have been extremely pleased because of the time and sacrifices that were made over the years."

This is not the first time the family has been recognized for their dedication to production agriculture. In 1976 they were named the Ray County Farm Management Award recipients and in 1979, James and Judy received the State Farm Management Award. The University of Missouri Extension Leaders added them to the Honor Roll in 1984 and the family received the Missouri State Fair Farm Family Award in 1994. Moreover, James was honored by the Missouri State Fair in 2012 for his long-standing service and dedication to the beef industry.

The plaque for the Hall of Fame award is sitting on the kitchen counter, where it has proudly been displayed since being accepted by the Waters in front of their Missouri Hereford family.

"We are working to find the perfect spot for it," said Judy.

A full list of past MHA Hall of Fame winners can be viewed at www.moherefords.org.

Left & Center: Susan & Glen received Top 10 Senior Showmanship Finalist at the 1991 Junior National, Lincoln, NE.



Membership Update

Missouri Junior Cattlemen Scholarship and Breed Award Winners

Missouri's Cattlemen Foundation awarded scholarships to 25 high school seniors and college students at the 49th Annual Missouri Cattle Industry Convention and Trade Show in Osage Beach, MO. The awards were presented during a banquet on Saturday, January 7, celebrating the achievements of youth in the cattle industry.

Scholarship recipients were chosen based on excellent communication, leadership and scholastic achievement as well as involvement in their communities and the agricultural industry. Each selected student received a \$1,000 scholarship funded by Missouri's Cattlemen Foundation and its many supporters. Several were endowed scholarships that were established to honor individuals who have made significant contributions to Missouri's beef cattle industry.

Makayla Reynolds, Huntsville, MO, was one of the scholarship winners.

Also at the banquet, junior beef cattle exhibitors were recognized for their hard work and success in the show ring. These junior showmen exhibited cattle at six shows sponsored by the Missouri Cattlemen's Association. Points based on class placings were accumulated during 2016 and the top exhibitors received prizes during the convention.

Overall Hereford heifer was awarded to Tory Miller, Lebanon, MO, and Jaden Riley, Marshall, MO, received the overall Hereford steer award.

Engagement Announcements

Jeff and Susan Yahnig of Harrisonville, MO, are pleased to announce the engagement of their daughter, Courtney Yahnig, to David Vest, son of Larry and Teresa Vest of Pilot Grove, MO. David and Courtney met at Junior National Hereford Expo in Kansas City, MO. Since then, they have continued to grow strong as a couple, sharing a passion for the cattle industry.

David has been an active part in the Missouri Hereford Association and Courtney raises Simmental and SimAngus cattle. David is the herdsman at Wright Charolais Farm located in Richmond, MO. Courtney enjoys teaching preschool in Lee's Summit, MO. The newly-engaged couple will marry Saturday, September 23, 2017 at Simple Blessings Farm located in Knob Knoster, MO.

David and Courtney plan to live in Kearney, MO after the wedding. The couple will continue to be an active part in the cattle industry and have their own cattle company, DC Cattle, consisting of Hereford, Simmental and SimAngus cattle.



Kyle & Shane Jackson are pleased to announce the engagement of their daughter, Ellen Augusta Jackson, to Carl Jay Mason, son of Sandee Lyle & the late Todd Mason.

Ellen grew up in Miller, MO, on her family's farm, Triple H Acres, raising and showing Herefords. Carl went to High School in

Greenfield, MO, where he was active in sports and FFA.

Carl and Ellen met through FFA and are now both attending Iowa State University in Ames, IA, where they are both pursuing degrees in Agricultural Engineering. Carl is also enlisted in the Iowa Army National Guard as a Motorpool Technician. Wedding plans are yet to be determined.

Baby Announcement

Brianne and Logan Bishop, Columbia, MO, are happy to announce the arrival of Ellie Marie on December 19, 2016. She weighed 7 pounds, 8 ounces and was 20 inches long.

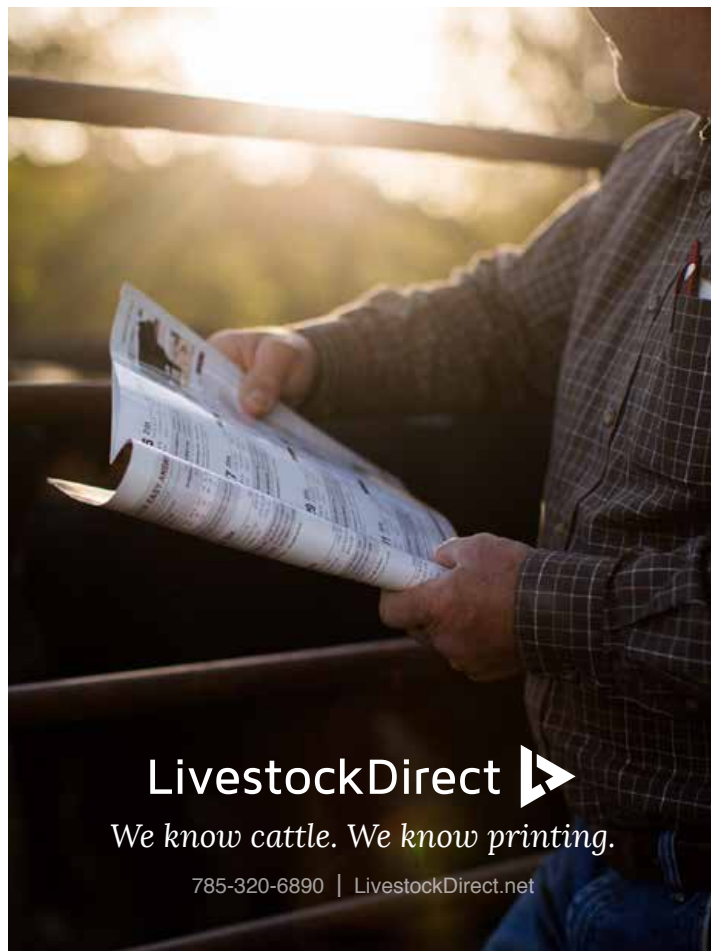
Ellie is the first granddaughter of AbraKadabra Cattle Co.'s Mark and Terry Abramovitz.



Priefert Chute Fundraiser

A generous donation of a Priefert working chute was given to the Missouri Junior Hereford Association (MJHA) by Lathrop Feed and Grain in Lawson, Missouri. MJHA raffled off the chute by selling chances at different sales and events throughout the fall raising more than \$1,300. The winning ticket was drawn before the Missouri Opportunity Sale on December 4, in Sedalia, Missouri going to Tim Rojas.

Left: Tim Rojas with winning the Priefert working chute.



LivestockDirect ▶

We know cattle. We know printing.

785-320-6890 | LivestockDirect.net

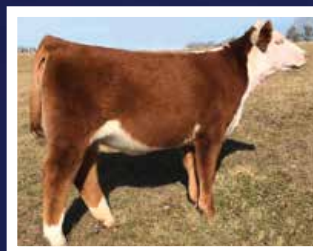
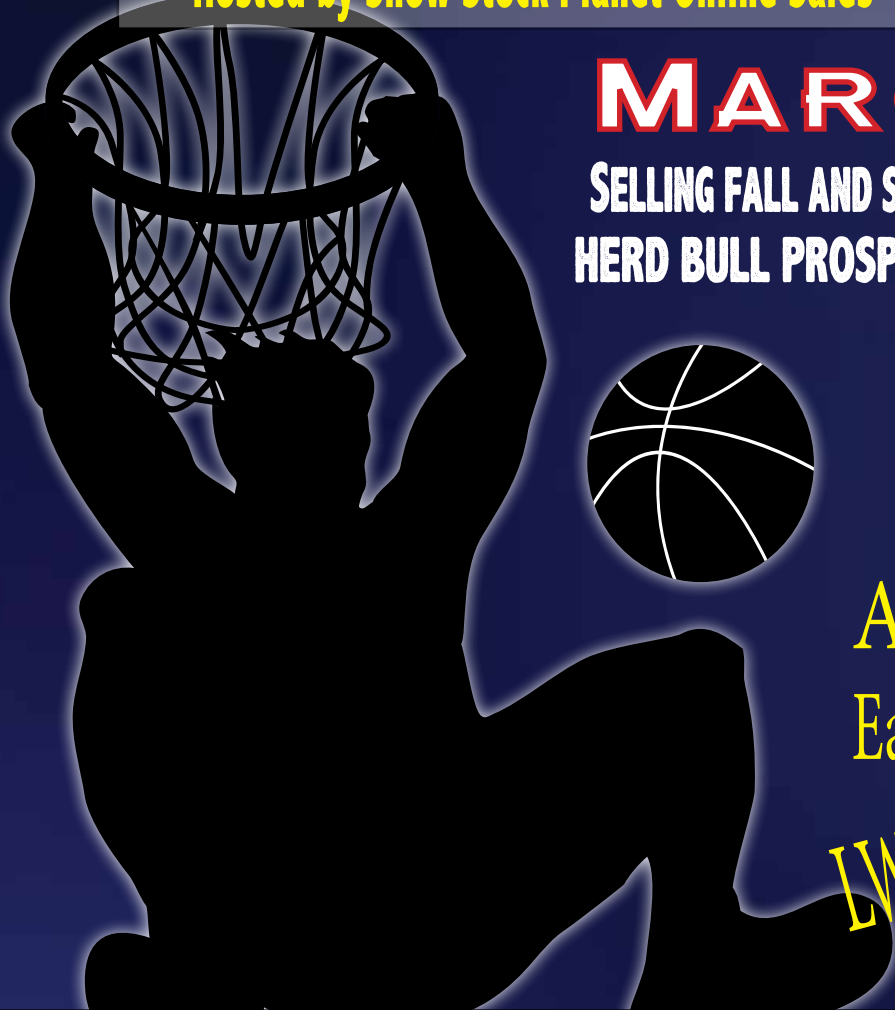
MARCH MADNESS

THOMPSON HEREFORD STYLE

Hosted by Show Stock Planet Online Sales • www.showstockplanet.com

MARCH 27TH

SELLING FALL AND SUMMER BORN SHOW HEIFER PROSPECTS,
HERD BULL PROSPECTS, EMBRYOS, SEMEN AND MORE!



July
About Time

August
Easy Money
LW Kabela



LAST YEAR'S HIGH SELLER
SOLD TO WIGGINS FAMILY OF LA



Selling a Right to flush &
embryos by Catapult



Find us on Facebook: Thompson Herefords

Tom, Laura, Madelyn
& Brynlee Thompson
Amity, MO :: Maryville, MO
Tom Thompson :: 816-284-3276
Rhoda Thompson :: 641-414-5754



Design By: Amanda Bacon

Show-Me Classic Bull Sale

With Commercial Females

April 1, 2017

Roth Hereford Farm • Windsor, MO



C Stockman 2059 ET Son



Churchill Red Bull Son



Hyalite On Target 936 Son



ROTH HEREFORD FARM
1146 NE Hwy J • Windsor, MO 65360

Ed & Carol Roth, owners
660-694-2569 • Cell 660-351-4127 • croth745@earthlink.net

Eddie, Mary, Lane & Levi Cell 660-351-4126

www.rothherefords.com

Mark your calendar - Show-Me Polled Hereford Classic - November 18th, 2017

LiveAuctions TV

Online bidding at LiveAuctions.tv

Bulls selling are out of
breed leading sires such as:
Churchill Red Bull, Revolution
4R, Trust, Hometown, R117,
Stockman, On Target 936

LJR Dottie 368T



Reg: 42856471

**Impressive set
of bulls available
out of cows
like this.**

TRIPLE H ACRES

The Jackson Family
Miller, MO

Home (417) 452-2297

Cell (417) 827-1049

triplehacres@live.com

Stop by when you're ready to find your next herd bull!



Like us on Facebook.

Central Missouri Polled Hereford Breeder's Association *109th Spring Sale*

MARCH 11, 2017 • NOON
South Central Regional Stockyards
Vienna, Missouri

Over 80 Lots sell!

Cow/calf pairs, open and bred heifers, show heifers and bred cows
Daughters of Logic, Revolution, Rib eye, and Victor 719T sell!



Cattle sired by NJW 73S W18 Hometown 10Y ET



Cattle sired by KJ HVH 33N Redeem 485T ET



Cattle sired by KJ C&L J119 Logic 023R

Catalog online: www.missourihereford.com

Consignors

Alex Roth Polled Herefords
Bade's Polled Herefords
Biglieni Farms
Cavanaugh Farms
Circle F Polled Herefords
Crider Polled Herefords
Day's Family Farm
Glengrove Farms
Gregory Hereford Ranch
Micheal Gregory
Gregory Polled Herefords
Hatchee Creek Farm
Journagan Ranch/
Missouri State University

Kauffman Hereford Farm
Luke Mangrum Farms, LLC
Mueller's Polled Herefords
Ockerhausen Farms
R & L Polled Herefords
Andrew Rackers
Rocking F Polled Herefords
Rolling Hills Acres
Robert Scheulen
Schrader's Polled Herefords
Steinbeck Farms
Valley View Farms
Welch's Twin Pines Ranch
Weinkeln Herefords

DVAuction
Broadcasting Real-Time Auctions

For a catalog or more
information contact
Frank Flaspohler,
Secretary/Sale Manager
222 County Rd 402 • Fayette, MO
660-537-4809 cell fwf@rockingf.com

Sale Barn Staff:
Ross Patton 573-308-6657
Bill Patton 573-308-6658

**Lilac Hill Cowherd Average EPD's
(compared to average of all active Hereford dams)**

Calving Ease Direct (CED) 1.5% -- **top 35% percentile**
 Yearling Weight (YW) 91 lb -- **top 15% percentile**
 Baldy Maternal Index (BMI) \$23 -- **top 10% percentile**
 Certified Hereford Index (CHB) \$28 -- **top 10% percentile**



Lilac Hill
 Polled Herefords



Ken and Carol Staten
 163 Hwy 5 • Fayette, MO 65248
 660.248.2764 Cell: 660.728.2764 Email: kestaten@socket.net



Reg: 43416369

Birk

Glengrove 11X Mr Hfrd 68Z ET

**HEARTLAND GENETIC BLEND
 JOINT PRODUCTION SALE**

2nd Saturday in October • Perryville, MO

Bulls available by Private Treaty

**SPOOLER FARM & CATTLE
 LIZZIE'S POLLED HEREFORDS
 JACKSON, MO
 Kenny Spooler • 573-270-4145**

PROVEN GENETICS

WWW.WOESSNERFARMS.COM



WOESSNER FARMS

11975 COUNTY ROAD 3450
 ST. JAMES, MO 65559

Herd Sires

WF 735 936 Limelight 4057
 WF 156T Maternal Bal Y1088A
 Innisfail Z311 13C

A1 Sires

Hyalite On Target 936
 C&L CT Federal 485T 6Y
 MSU TCF Revolution 4R
 Churchill Sure Bet 4185 B ET
 MHPH 521X Action 106A

Bulls and Females for Sale at Private Treaty

MIKE WOESSNER
 (573) 578-4050
 MIKE@INV-REL.COM



MATT WOESSNER
 (573) 308-7006
 MATT@INV-REL.COM

DID YOU KNOW

nutrition research funded by your checkoff shows consumers that beef has what they want?

"Consumers are very concerned about nutrition. Beef delivers 10 really important nutrients: protein for muscles, B vitamins for brains, iron for blood, and zinc for the immune system. All this for only 150 calories in 3 ounces of lean beef. Your beef checkoff invests in nutrition research, and tells that story through advertising, social media, and at the grocery store meat counter."

While you and Joan are working to produce nutritious beef, your checkoff provides facts to consumers about the importance of beef in the diet.

MyBeefCheckoff.com



Funded by the Beef Checkoff.



Joan Ruskamp
Feedlot operator



National Beef Month

May is celebrated as National Beef Month across the country. Get involved in the movement of promoting the end product – beef.

Beef producers are responsible for delivering beef's positive message. Consumers want to know more than ever where their food comes from and what is in it.

Contact your local grocery stores to identify what is being done in your area to educate consumers on the nutritional benefits of beef. They may be looking for producers to hand out product samples throughout the month. Who better to tell the story of how animals are cared for on a daily basis than a producer?

The Missouri Beef Industry Council has a wide variety of promotional handouts including 30 minute meals, choosing the correct cuts and cooking methods, beef pairings, rubs and seasonings, and nutritional benefits of eating beef. Your Beef Check-Off dollars help fund these educational materials, so use them in every way possible!



Pictured is the Missouri State Fair FFA Champion, "Beckham"

Sire: Ctl Federal 485 T 61
Dam: CJB Stephanie W3
DOB: September 5, 2014

FOR SALE!

September 2016
heifers out of
Hometown,
Homegrown,
Logic, Federal
and our herd bull,
Shrek for sale.

Tri-L Polled Herefords

19417 NE 178th Street • Holt, Missouri 64048

816-628-5571 Home
816-421-4075 Business
816-797-8020 Cell

Jack and Alicia Lewis
Katherine Fuller
Conner Bolch

Sale Index

- Missouri Opportunity Sale
- Season Finale
- Show-Me Polled Hereford Classic

Missouri Opportunity Sale

Sedalia, Mo. – December 4, 2016

3 bulls – \$6,950; average – \$2,317

48 females – \$140,700; average – \$2,931

1 steer – \$800; average – \$800

FEMALES

SCHU-LAR 2A VIVIAN 6Y 3027, sired by UPS DOMINO 327, consigned by Schu-Lar Polled Herefords, to Jon Gregger, Jefferson City, Mo., \$3,500; and a heifer calf **SCHU-LAR 7D VIVIAN 2A 18** sired by **SCHU-LAR RED BULL 18X**, to Shoenberger Polled Herefords, Aurora, Mo., \$4,000

BB 0245 CASHS TOUCHDOWN 1678 ET, sired by DKF RO CASH FLOW 0245 ET, consigned by Bonebrake Herefords, to Dirk and Jack Wirth, Willow Springs, Mo., \$6,000

AC HOPE 4002 ET, sired by NJW 985 R117 RIBEYE 88X ET, consigned by Asher Creek Cattle Company, and a heifer calf sired by LSW WCC ABOUT TIME X06, to Mary Grace Warden, Halfway, Mo., \$5,700

OAKS 2 GOOD 2B TRUE 925X, sired by STAR OBF BOGART 5L, consigned by Shingle Oaks Polled Herefords, to Tom Sebolt, Seymour, Mo., \$2,500; and a heifer calf **OAKS 4 THE GOOD TIMES 519D** sired by RST TIMES A WASTIN 0124, to Shelby and Rachel Bagnell, Slater, Mo., \$2,500

A full house crowd attended the sale with just as large of group watching online with LiveAuctions. TV. The 33 consignors brought the best set of cattle ever to the sale.

Season Finale

Olds, Alberta – December 11, 2016

Auctioneer: Ryan Dorran

Sale Management: Bohrsen Marketing Service

33 live lots – \$223,400; average – \$6,766

2 embryo lots; average – \$1,150

BULLS

FCC 48Y COLUMBUS 3C, sired by HAROLDSONS WLC RHINO ET 48Y, consigned by Flewelling Cattle Co., to Lock Farms, Macklin, SK, \$18,000

FEMALES

GOLDEN OAK SPIRIT QUEEN 73D, sired by JDH 4X ULTIMATE 236Z 94B, consigned by Golden Oak Livestock, to AXA Polled Herefords, Hampton, NB, \$15,500

FLUSHES

NJW 73S 48ST GOLDENROD 62A ET, sired by KJ HVH 33N REDEEM 48ST ET, consigned by Blairs.Ag Cattle Co., to Steven Knutson, Wapalla, SK, \$12,500

Show-Me Polled Hereford Classic

Windsor, Mo. – November 19, 2016

Auctioneer: Dale Stith

Sale Management: Jim and Linda Reed, Midwest Cattle Service, Inc

9.5 bulls – \$32,150; average – \$3,384

48 females – \$167,500; average – \$3,492

57.5 purebred lots – \$199,650; average – \$3,472

Topping the sale was Lot 32, a powerful daughter of THM Durango 4037 from Glengrove Farms, Rolla, Mo. She sold to Bacon Herefords, Siloam Springs, Ar., for \$7,500.

Lot 5 from Roth Hereford Farm brought \$5,400. The cow a daughter of Star 8006 Enyeto 163M brought \$2,700 and sold to Journagan Ranch/MSU, Mountain Grove, Mo., and the calf sold to Levi Roth, Windsor, Mo., for \$2,700.

Lot 46 from Steinbeck Farm, Hermann, Mo., brought \$5,300. The cow went to Candy Meadow Farms, Lexington, Tenn., for \$2,300 and her heifer calf by NJW 73S M326 Trust 100w sold to Hagerman Farms, Syracuse, Mo., for \$3,000.

At \$6,300 was Lot 40 from Glengrove Farms. The cow a daughter of CMF SAH 676M On Target 837S sold to Bacon Polled Herefords, Siloam Springs, Ar., for \$5,000 and her heifer calf sold to Ludwig Farms, Linn, Mo., for \$1,300.

Lot 26 from Roth Hereford Farm sold for \$5,100. The cow went to Jennifer and Gabrielle Keets, Berlin Heights, Oh., for \$2,600 and her heifer calf by NJW 76S P20 Beef 38W sold to Joe Patrick, Sarcoxie, Mo., for \$2,500.

Topping an excellent offering of fall calving cows was Lot 54, a two-year-old daughter of NJW 73S M326 Trust 100W with a fall heifer calf at side by EFBeeF U208 Sure Bet Z002. This popular pair went to Don Hardin, Longview Farms, New Virginia, Ia., for \$5,000. They were consigned by Reed Farms, Green Ridge, Mo.

Topping the bull sale was one-half interest in Lot 55, a son of KCF Bennett Encore Z311 from Reed Farms, Green Ridge, Mo. He sold to Faquier Farm, Warrenton, VA, for \$5,500.

Lot 59, a son of CMR The Program A431, went to Chris Bodelon, Effie, La., for \$4,200, consigned by Reed Farms, Green Ridge, Mo.

This was an outstanding offering of Polled Hereford cattle and sold in a very steady price range to buyers from Iowa, North Carolina, Virginia, Ohio, Arkansas, Illinois, Tennessee, Louisiana, Missouri and Canada.

Show-Me Classic Bull Sale

Saturday, April 1st, 2017
Noon

Held at Roth Hereford Farm
Windsor, MO



PRF 10Y HOME TRACK 523C

Sire: NJW 73S W18 HOMETOWN 10Y ET
Calved: September 9th, 2015
REG# P43648811



PRF 22Z MAXXED OUT 69K 604D ET

Sire: NJW 67U 28M
BIG MAX 22Z
Calved: January 7th, 2016
REG# P43764020



Phillips-Renner Farms

Amy Phillips
(816) 878-7305 - Nothead1@aol.com
37144 Brady Creek Road, Richmond, MO 64085

Also selling
bulls sired by Churchill Red Bull
and Whitehawk Paramount

www.prfherefords.com
Herdsman: Angela Phillips
Cow checker: Amanda Phillips

J.D. Bellis Family • DEDICATED TO PRODUCING

“No Excuse Herefords”

Make Plans to Attend...Partners In Performance '17

April 30, 2017 • At the Farm • Aurora, MO



JDB Z214 Z080 KEYSHA C147
P43670593 • 06/24/2015

Bred to calve in early March to Churchill Sensation 028X

CED +3.4 BW 2.0 WW 57 YW 92 Milk 23
M&G 52 REA 0.91 IMF 0.00 CHB \$31



JDB 45P 507P LADY TANK C116 ET
P43689040 • 03/29/2015

Bred to calve in early March to KCF Bennett Summit B261

CED +0.5 BW 3.7 WW 50 YW 86 Milk 25
M&G 50 REA 0.43 IMF 0.17 CHB \$27



JDB Z007 A013 REVA C125
P43670130 • 04/07/2015

Bred to calve in early March to Churchill Sensation 028X

CED +2.3 BW 3.1 WW 62 YW 102 Milk 22
M&G 53 REA 0.65 IMF 0.12 CHB \$31



JDB W110 X088 LADYOUTLOOK C113
P43669041 • 03/24/2015

Bred to calve early March to Churchill Sensation 028X

CED +2.3 BW 2.4 WW 58 YW 96 Milk 18
M&G 47 REA 0.57 IMF 0.07 CHB \$30



JDB Z303 A412 STRATEGY C501
P43688354 • 09/14/2015

Sire: KCF BENNETT STRATEGY Z303 ET

CED +2.9 BW 2.7 WW 65 YW 110 Milk 56
M&G 56 REA 0.61 IMF 0.38 CHB \$39



JDB Z214 Y037 KEYSHA C145
P43670726 • 06/02/2015

Bred to calve in early March to Churchill Sensation 028X

CED +4.6 BW -0.1 WW 49 YW 71 Milk 23
M&G 47 REA 0.58 IMF 0.03 CHB \$25



JDB S100 Y020 DOMINETTE C121
P43706820 • 04/01/2015

Bred to calve in early March to KCF Bennett Encore Z311

CED +5.3 BW 1.8 WW 52 YW 85 Milk 27
M&G 53 REA 0.23 IMF 0.30 CHB \$29



JDB 028X A312 SENSATION C505
Smooth Polled • 09/15/15

Sire: CHURCHILL SENSATION 028X

PE EPDs CED +9.2 BW -1.8 WW 52 YW 77
Milk 36 M&G 62 REA 0.24 IMF 0.23 CHB \$28



JDB A008 Z202 BRUNO C522
P43768679 • 12/10/2015

Sire: JDB 719T K077 BRUNO A008 ET

CED +2.1 BW 1.7 WW 60 YW 96 Milk 19
M&G 49 REA 0.58 IMF 0.04 CHB \$31



Jim D. Bellis Family

Jim D. & Carla Bellis
19264 Lawrence 2170 • Aurora, MO 65605
Jim cell: 417-466-8679
JimBellis@missouristate.edu
Jonathan Bellis 417-440-1300
Kevin, Jamie & Harper Johansen
Kevin cell: 573-289-1061
Joanna & Neal Wilkinson

*Up to 25 breeding age bulls selected for breed leading EPDs with many qualifying as calving ease leaders

*50 pairs including the entire first calf heifer group with their A.I. sired calves at side

*Select group of bred heifers and open show heifer prospects

Email Jim to receive a sale catalog!

Events & Deadlines

MARCH

- MAR 4** Mead Farms Spring Bull Sale
Versailles, MO
- MAR 11** Central MO Polled Hereford
Breeder's Assoc. 109th Spring Sale
Vienna, Missouri
- MAR 18** Falling Timber Farm Bull &
Female Sale
Marthasville, Missouri
- MAR 25** The Cowman's Kind XX Bull &
Female Sale
Lexington, Tennessee
- MAR 25** Arkansas Multi-Breed Bull Sale
Heber Springs, Arkansas
- MAR 27** March Madness Thompson
Hereford Style
www.showstockplanet.com
- MAR 27** SW MO All-Breed Performance
Tested Bull Sale
Springfield, Missouri

APRIL

- APRIL 1** Spring HYFA Scholarships &
Awards Deadline
- APRIL 1** MHA Dues Deadline (to receive an
award at the 2017 awards banquet)
- APRIL 1** Show-Me Classic Bull Sale
Windsor, Missouri
- APRIL 19** GKB Cattle Online Sale
smartauctions.co
- APRIL 30** Jim D. Bellis Family Female Sale
Aurora, Missouri

MAY

- MAY 1** JNHE Early Bird Entry Deadline
- MAY 1** MO Opportunity Sale
Nomination Deadline
- MAY 20** Woolfolk Farms Female Sale
Columbia, Tennessee

JUNE

- JUNE 1** JNHE Final Entry &
Ownership Deadline
- JUNE 9-11** 35th Annual MCA All-Breeds
Junior Show – MJHA Meeting
Following the Hereford Show –
Hereford Women of MO Meeting
Sedalia, MO


- JUNE 15** Ozark Empire Fair Entry Deadline

JULY

- JULY 1** MO State Fair Entry Deadline
- JULY 15-21** Junior National Hereford Expo
Louisville, Kentucky

SEPTEMBER



- SEPT 8-10** MO Hereford Field Day
Southwest Missouri



LIVESTOCK INSURANCE

Insure Your Most Valuable Livestock!

**BULLS • DONORS • HEIFERS
SEMEN TANKS • SHOW CATTLE**


www.DorranMarketing.com

CASSIE DORRAN 403-507-5953
cassie@ruralroute creations.com

WIDE RANGE

BOVINE UNLIMITED

Cody Washam
30487 Hwy J • Wentworth, MO 64873
Cell: 417.489.5450
Email: cwhsangus@hotmail.com



ABS Turn Key Service
Authorized Independent ABS Representative
Certified A.I. Technician
Mass Breeding and Synchronization Projects

STOUT, RUGGED &
ready to go to work

These bulls sell...

Show Me Classic Bull Sale

April 1, 2017 • Roth Hereford Farm • Windsor, MO



GLENGROVE BIG JACKPOT 53C ET

Reg: 43670894 DOB: 09/03/2015

Sire: WLB WINCHESTER POWERBALL 27A



GLENGROVE 74Y COLLIN C24

Reg: 43636291 DOB: 09/11/2015

Sire: REMITALL-WEST GAME DAY ET 74Y



GLENGROVE 001A CORBIN C25

Reg: 43637371 DOB: 09/11/2015

Sire: GERBER ANODYNE 001A



GLENGROVE CLIFTON C37

Reg: 43637373 DOB: 09/30/2015

Sire: CMF SAH 676M ON TARGET 837S



GLENGROVE 10Y CHIPENDALE C21

Reg: 43765353 DOB: 09/05/2015

Sire: NJW 73S W18 HOMETOWN 10Y ET

*Quality you can count on
year after year!*



Bob and Gretchen Thompson
12905 C.R. 4010 • Rolla, MO 65401
Home 573-341-3820 Cell 573-368-9557
www.glengrovefarms.com



District 1: Director - Amy Phillips

District 2: Director - Brian Littleton

District 3: Director - Bill Nation

District 4: Director - Tim Bernt

H&H Herefords
Brad, Sherry & Justin Hurst
Chris, Reba & Zakary Rapp
17275 S. 1900 Rd.
Nevada, MO 64772
Brad 417.321.2350
Sherry 417.321.0423
h2herefords4@gmail.com
Find us on Facebook
www.handherefords.com

Breeding for Excellence
Offering Horned and Polled Genetics!
Fall and Spring Bulls for Sale by Private Treaty!

Belzer Farms
Browning, MO 64630
Ted Belzer • 660-244-3333
Tony Belzer • 660-734-8006
April Miller • 816-305-7490
aprilmiller1732@gmail.com

Brad, Sherry & Justin Hurst
Chris, Reba & Zakary Rapp
17275 S. 1900 Rd.
Nevada, MO 64772
Brad 417.321.2350
Sherry 417.321.0423
Email: brad@handshowsupplies.com
Email: sherry@handshowsupplies.com
WEAVER LEATHER LIVESTOCK
Authorized Weaver Leather Livestock Dealer in Southwest Missouri
Find us on Facebook
www.handshowsupplies.com

Circle R Cattle Co.
Polled and Horned Genetics
The Reynolds'
Dan, Rose, Danielle
and Dalton Reynolds
505 E. ELM
HUNTSVILLE, MO 65259
PHONE: 660-269-6849
EMAIL: drr7wb@gmail.com

J Bar K Farms
Jerry and Katherine Arnold
16531 E. Militia Rd. • Nevada, MO 64772
(417) 667-8730 (417) 667-1015

Annual Production Sale
SUNDAY, OCTOBER 22, 2017
REYNOLDS HEREFORDS
Matt, Barb, Tye & Makayla
1071 C.R. 1231 • Huntsville, MO 65259
Matt Cell 660-676-3788 Barb 660-676-4788
reynoldscattle@cvalley.net
www.reynoldsherefords.com
Offering Horned and Polled Genetics

LAZE-D HEREFORDS
Dennis Michael Sherry Michael
17770 S. 425 Rd.
Jerico Springs, MO 64756
417-398-0019
lazedherefords@hotmail.com
Registered Red and Black Herefords Available
- Combining the best of both worlds -

WF
Waters Farm
Glen, Kyla, Kristin & Grant Waters
10316 K Highway
Norborne, MO 64668
660.484.3127 home phone
660.707.3646 mobile phone
gwaters@landolakes.com

one STOP livestock marketing

Day's Family Farm
 Pilot Grove, MO
 Larry and Pam Day
 660-834-4678 home • 660-621-0812 cell
 llday@iland.net




Raising Hereford cattle for over 50 years
 www.daysfamilyfarm.com

Your source for performance tested Polled Hereford
 Bulls and Quality Replacement Females



Glengrove Farm
 Bob and Gretchen Thompson
 12905 County Rd. 4010
 Rolla, MO 65401
 Home 573-341-3820
 Cell 573-368-9557
 www.glengrovetfarms.com

LUDWIG
 Dale, Rhonda, Trent, Claire & Troy
 Linn, MO
 Phone: 573-338-6000
 Email: ludwigdale@yahoo.com



HERD SIRES
 Ludwig Catapult X-Box C21 ET
 Ludwig Tank Game Day B65

A.I. SIRES
 Kickstart Catapult Federal Red Bull
 Heavy Duty Hometown Trust R Leader

ROCKING F POLLED HEREFORDS

Frank and Pam Flaspohler
 222 County Road 402
 Fayette, Missouri 65248
 Phone: 660-537-4809
 E-mail: fwf@rockingf.com



PRODUCING POLLED HEREFORD SEEDSTOCK

Business Branding • Advertisements • Social Media
 Web Design • Catalogs • Signage • Eblasts

www.ruralroute creations.com

Cassie Dorran 403-507-5953
 cassie@ruralroute creations.com
 Jocelyn Washam 417-838-5546
 jocelyn@ruralroute creations.com

*Rural
 Route*
CREATIONS
 ONE-STOP MARKETING



Proven Genetics
WF Private Treaty
 Offers Available
 Bulls and Females for sale at Private Treaty

Matt Woessner
 (573) 308-7006
 matt@inv-rel.com

Mike Woessner
 (573) 578-4050
 mike@inv-rel.com


11975 County Road 3450 • St. James, MO 65559
 WWW.WOESSNERFARMS.COM

District 6: Director – Rick Steinbeck

AMR **Alex Roth**
 Polled Herefords
 Alex and Michaela Roth
 Altenburg, MO
 (573) 576-5141
 Hereford and Charolais Cattle

Dale, Lindy & Anna Roth
 Altenburg, MO
 (573) 450-1214
 Registered Hereford Cattle

Bourbeuse Bend
Herefords



Jerry, Cheryl & Blake Voss
 573-368-9001 (Blake)
 Polled & Horned Genetics

"Today's Cattle With Tomorrow's Genetics"

CRIDER FARM
 Since 1845



Polled Herefords
 Bland, MO 65014 (573) 646-3883



STEINBECK FARMS
 Approximately 35 Polled
 Hereford and Red Angus
 Bulls available annually

Rick & Laurie Steinbeck
 2322 Drake School Rd • Hermann, MO 65041
 Cell 573-680-0954 Home 573-237-2668

ACES POLLED HEREFORDS

A
♠ AI Sire
CHAC
Mason
2214 ♠

Danny & Lila Fanning
21245 Hawthorne Rd.
Joplin, MO 64801
C 417-499-6694

A
♠ AI Sire
Di
Maggio
2094 ET ♠

Bulls and Females For Sale

DUVALL

Polled Herefords

Gary and Frances Duvall
1082 Hwy 97 • Lockwood, MO 65682
417-232-4817 H 417-827-2163 C
duvallherefords@keinet.net

Herdsmen: Jason Swihart 417-737-1212

AC Asher Creek

CATTLE

Jesse, Kara, Kinleigh & Kanton Bolin
Walnut Grove, Missouri
(417) 830-2835

Holmes Hereford Farm
Greg & Vicki Holmes
56 State Hwy A
PO Box 482
Wheaton, MO 64874
Phone: 417-652-7463
Cell: 417-848-9010
holmesfs@windstream.net

Horned & Polled
Herefords

H F

Visitors Are Always Welcome

Success Breeds Success

Blue Ribbon Farms

11768 W. Farm Rd. 34
Walnut Grove, MO 65770

Jeff & Stephanie Rawie
417-209-5538
jeffrawie24@yahoo.com

Aaron & Kylie Noble

McConnell Farms

Helpers and Bulls For Sale By Private Treaty

Darrell & Judy McConnell
11524 West Farm Road 168
Republic, MO 65738
Phone: 417-732-7196

BPH

BUTLER POLLED HEREFORDS

Jimmie, Andrea & Joel Butler
Cody & Jocelyn Washam
417.732.6069 417.838.4095
butlerpolledherefords@hotmail.com

Registered Polled & Horned Genetics

"Always breeding for a better one"



McMillen's Toothacre Ranch

Trent & Mary McMillen
& Family
9128 W. Farm Road 30
Walnut Grove, MO 65770

417-788-2787 home 417-830-7257 cell

R&L Polled Herefords

4401 S. 200th Rd.
Halfway, MO 65663

*Herd Sire Prospects
Select Females*

Kody Agee
Showman

Lendell Voris
417-445-2461

CPH

Mike, Cathy & Julie

5373 South 276th Road
Pleasant Hill, MO 65129
417-880-3525 Mike • 417-258-5968 Julie
417-267-2652 Home • choateherefords@gmail.com


www.moherefords.org




Evans Hereford Ranch
Registered Polled and Horned Herefords
Mark, Kelly, Hannah and Rebekah Evans
194 Delaware Lane • Squires, MO 65755
Home: 417-265-3649 Cell: 417-683-7411
Email: ebranch@yahoo.com

KACZMAREK HEREFORDS
Breeding Exceptional Cattle For 46 Years
PO Box 434
Salem, Missouri 65560

Joe Kaczmarek 417-894-1505
4joekaczmarek@gmail.com
Bill & Roberta Kaczmarek 573-729-5923
Tony Kaczmarek 573-368-3603
See us on Facebook: **KACZMAREK HEREFORDS**



District 9: Director – Kenny Spooler




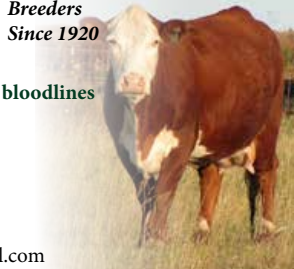
APH
Aufdenberg Polled Herefords
"Quality You Can Count On"
Darrell & Karen Aufdenberg
Jackson, Missouri
(573) 270-6755 cell
aufdenbergd@yahoo.com

Kansas

Kanza Cattle
Polled Hereford Breeders Since 1920

Bulls & Females for Sale
Foundation, maternal, performance bloodlines
Herd sire: SHF Bailey W18 B103
(Wonder x Progress son)

Lori Riffel Hambright & Family
Chapman, KS (2 hrs west of KC on I-70)
785-313-6565 • kanzacattlelives@hotmail.com




MALONE
Hereford Farm
1371 Road F ~ Emporia, KS 66801
Phone/Fax: 620-342-7538
Alton's Cell: 620-794-2358
ammalone@lew.coop
Alton, Marie, Brian, Dustin and Michelle Malone



TOWNER FARM
HEREFORDS POLLED & HORNED
John Towner
320 E. 47 Hwy
Girard, KS 66743
P: 620-724-6636
C: 620-249-6636
john@townerfarm.com
www.townerfarm.com

Kentucky



Toby & Debby Dulworth
270-224-2993
DOGWOOD FARM
Herefords since 1964
Pasture-Selected
dogwood@brtc.net
2492 Kirkman, LaCenter, KY 42056

Kolt Cattle Co. and Kids, JB Show Cattle, King Ranch and David Shelburg Purchase Foundation Female Supporting Hereford Youth

BR Kate Rielle 5532 ET sold for \$75,000 to benefit the Hereford Youth Foundation of America's Growing a Lasting Legacy Campaign, Jan. 13, at the Mile High Night Sale in Denver.

The Lot 1 Foundation Female has been highlighting the National Hereford Sale in Denver the past nine years with a total of \$690,000 being raised to support the Hereford Youth Foundation of America's mission, which recognizes and rewards the development of life skills and values in the next generation.

Kate Rielle was purchased by Kolt Cattle Co. and kids, Carly, Michael and Maren, Garland, Neb.; JB Show Cattle, Joe and Dee Braman, Refugio, Texas; King Ranch, Bill King, Moriarty, N.M.; and David Shelburg, Jacksonville, Fla.

"I'm very excited about what the future has in store for young Hereford leaders as we work to provide them with education, scholarship and leadership opportunities," said Amy Cowan, American Hereford Association director of youth activities and foundation. "The Lot 1 story is such a great example of families giving back, and more importantly what the foundation stands for. We couldn't do this without donors like the Barber family and the Kate Rielle buyers group who stepped up to give back and to make a difference in our Hereford youth program."

Kate Rielle was donated by the Barber Ranch, Channing, Texas. She is an Aug. 5, 2015, daughter of NJW 73S W18 Hometown 10Y ET and out of BR Gabrielle 5082 by BR Lansing 3060.



2017 Missouri Hereford Field Day

Area: Southwest MO - District 7

Sept. 8 - evening board meeting
Sept. 9-10 - Field Day

*Plan a fun-filled weekend of cattle
tours, speakers and much more!*

Contact: Justin Sissel, 417-818-8714

ABS Global	18	Jim D. Bellis Family	33
Aces Polled Herefords	38	Journagan Ranch / Missouri State	43
Alex Roth Polled Herefords	37	Kaczmarek Herefords	39
AbraKadabra Cattle Co. Back Cover		Kanza Cattle	39
AMR	37	Laze-D Herefords	36
Asher Creek Cattle	38	Lilac Hill Polled Herefords	30
Aufdenberg Polled Herefords	39, 40	Livestock Direct	26
Belzer Farms	36	Lizzie's Polled Herefords	30
Blue Ribbon Farms	38	Ludwig Farms	37
Bonebrake Registered Herefords	6	Malone Hereford Farm	39
Bourbeuse Bend Herefords	37	McConnell Farms	38
Butler Polled Herefords	2, 38	McCorkill Family Farms	10
Candy Meadow Farms	15	McMillen's Toothacre Ranch	38
Cattle Visions	21	Miller Herefords	2
Central MO Polled Hereford Breeder's Assoc	29	MultiminUSA	19
Circle R Cattle Co.	36	Phillips-Renner Farms	32
Choate Polled Herefords	38	R&L Polled Herefords	38
College of the Ozarks	22-23	Reed Farms	43
Cowco, Inc.	6	Reynolds Herefords	36
Crider Farm	37	Rocking F Polled Herefords	37
Day's Family Farm	37	Roth Hereford Farm	28
Dogwood Farm	39	Rural Route Creations	16, 36-37
Dorran Marketing Inc.	34	Signs by L & J	42
Doss Hereford Farms	42	Steinbeck Farms	37
Duvall Polled Herefords	38	Thompson Herefords	27
Evans Hereford Ranch	39	Tri-L Polled Herefords	31
Falling Timber Farm	13	Triple H Acres	28
GKB Cattle	11	Towner Farm	39
Glengrove Farm	35, 37	Waters Farm	36
Gregory Hereford Ranch	16	Wide Range Bovine Unlimited	34
Gregory Polled Herefords	14	WMC Cattle Co.	3
H&H Herefords	36	Woessner Farms	30, 37
H&H Show Supply	36	Woolfolk Farms	7
Holmes Hereford Farm	38	Zoetis, Inc.	41
J Bar K Farms	36		

Quality YOU CAN COUNT ON!



Birk

APH 2214 **Samson** 8D

Reg: P43743814 • DOB: 1-29-16
Sire: CHAC MASON 2214

CED -0.8 BW +3.7 WW 60 YW 95 Milk 24 M&G 54 CEM 0.5 MCW 107 SC 1.25 CW 68 REA 0.75

Plan to attend our
joint production sale
Heartland Genetic Blend
Second Saturday in October

APH

Aufdenberg Polled Herefords

Darrell & Karen Aufdenberg
Jackson, Missouri
(573) 270-6755 cell
aufdenbergd@yahoo.com

Samson's dam is a Revolution
daughter that has never missed
and has a beautiful udder.

She has a son working for Doss
Herefords and a daughter at
Parker Bros.



INFORCE™ 3

ONE SHOT®
BVD

Complete respiratory protection

INFORCE™ 3 & ONE SHOT® BVD give you a lot of &s when it comes to calf immunization.

It begins with intranasal INFORCE 3 & the rapid innate & active immunity it provides where IBR, BRSV & PI₃ respiratory diseases start & continues with immune system priming against future exposure. Plus, when you administer ONE SHOT BVD subcutaneously, your calves receive superior Type 1 BVD & Type 2 BVD & *Mannheimia haemolytica* protection.

Because when you start with a balanced immunization program, you help calves stay healthy & grow to their potential & prevent the spread of diseases & earn a better price at market & ... well, you get the picture.

Learn more by contacting your local Zoetis representative or visiting CompleteCalfProtection.com.

All trademarks are the property of Zoetis Services LLC or a related company or a licensor unless otherwise noted.
©2017 Zoetis Inc. All rights reserved. INF-00025

zoetis

DOSS HEREFORD FARMS

Cattle with a look & numbers



Contact us for bulls, females and
show heifers throughout the year!

PHH PCC Doss Mr Wonderful 605

Reg: 43727265

Our Newest Walking Sire

BW	WW	YW	MM	M&G	FAT	REA	MARB
-0.2	48	77	34	58	0.002	0.16	0.38

Look for our consignments at:

Iowa Beef Expo • Des Moines, IA

Ladies of the Royal • Kansas City, MO

Missouri Opportunity Sale • Sedalia, MO

AI SIRES:

MSU TCF Revolution 4R

Hyalite On Target 936

MHPH 521X Action 106A

TH 223 71T Victor 655T

WALKING SIRE:

APH DOSS 10Y HOME STRETCH 6B

A BULL THAT WORKS WELL!

DOSS

HEREFORD FARMS

6200 N.E. 142ND ST, SMITHVILLE, MO 64089 • 816-699-8831 • DHF6200@AOL.COM • WWW.DOSSHEREFORDFARMS.COM

www.signsbylandj.com

Signs BY
LJ
&
Since 1989

BANNERS

FARM/SHOW SIGNS

MAGNETIC SIGNS

SHOWBOX LETTERING

TRUCK & TRAILER LETTERING

AUTO TAGS

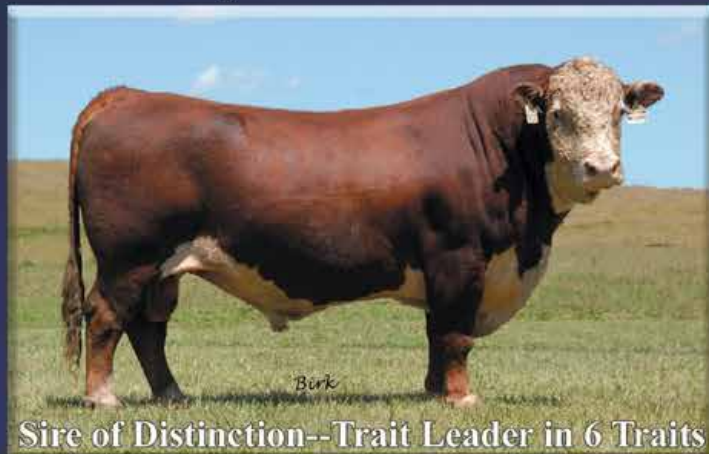
COMMERCIAL SIGNS

Like us on Facebook 

risha6469@aol.com

Want to AI to Predictable Proven Bulls

✓ Check out these Proven sires



Sire of Distinction--Trait Leader in 6 Traits

KJ C&L J119 Logic 023R

Sired by: DRF JWR Prince Victor 711

Dam: SHF Interstate D03 J119

CED 5.0 BW 1.6 WW 65 YW 100 M 24 M&G 57 SC 0.3
REA 0.55 MARB 0.08 BMI \$15 CEZ \$17 BII \$8 CHB \$33



Trait Leader in 12 Traits • Homozygous polled

EFBeef U208 Sure Bet Z002

Sired by: EFBeef Foremost U208

Dam: Schu-Lar 13X of 809 N093

CED 6.7 BW -0.3 WW 56 YW 92 M 22 M&G 50 SC 1.7
REA 0.61 MARB 0.26 BMI \$31 CEZ \$24 BII \$27 CHB \$33



Trait Leader in 10 Traits • Homozygous polled

C&L CT Federal 485T 6Y

Sired by: KJ HVH 33N Redeem 485T

Dam: C&L Miss Junior 408 1T

CED 5.3 BW 1.7 WW 68 YW 105 M 16 M&G 49 SC 1.5
REA 0.32 MARB 0.14 BMI \$26 CEZ \$20 BII \$20 CHB \$28



MPH Z3 Box Top C16

Sired by: MPH 10H Juice Box Z3

Dam: MPH 1030 Brandi W19 (DOD)

CED 3.8 BW 0.9 WW 56 YW 88 M 35 M&G 63 SC 1.3
REA 0.21 MARB 0.24 BMI \$22 CEZ \$18 BII \$17 CHB \$29

LJR **Journagan Ranch**
Missouri State
Agriculture

Marty Lueck, manager

417-948-2689 or 417-838-1482

Rt 1 Box 85G • Mountain Grove, Mo 65711

mvlueck@centurytel.net

**REED
FARMS**

**Registered Polled
Herefords**

Since 1962

Jim and Linda Reed

PO Box 126 • Green Ridge, Mo 65332

660-527-3507 • cell 417-860-3102

reedent@iland.net • www.reedent.com

Progeny and semen now for sale out of these new young sires.

Breeding age bulls, cow/calf pairs and replacement females.



View Video Online

ABRA 16A Justice 6C ET

Sire: THT9011X American Hereford 16A
Dam: NJW 78P 408 Ladysport 67W
DOB: 1/03/15

Semen: \$35/straw
Certificate: \$50

EPDs	CED	BW	WW	YW	Milk	M&G
	-0.1	4.2	51	96	30	56



View Video Online

ABRA 74Y Score 1C ET

Sire: Remitall-West Game Day ET 74Y
Dam: H H Jewel 113 ET
DOB: 1/02/15

Semen: \$75/straw
Non-Certificate

EPDs	CED	BW	WW	YW	Milk	M&G
	-0.5	3.7	59	94	26	56



Berk

ABRA 0109 Mr Red 3B ET

Sire: H W4 Pure Country 0109
Dam: K&B Red Lady 8045U
DOB: 1/07/14

Semen: \$35/straw
Certificate: \$50

EPDs	CED	BW	WW	YW	Milk	M&G
	-2.0	3.5	60	106	21	51

AbraKadabra
Cattle Company

Mark, Terry and Sabrina Abramovitz
Logan & Brianne Bishop
6969 Bass Lane • Columbia, MO 65201
(573) 864-7449 Terry Cell • (573) 864-6475 Mark Cell
telwing@gmail.com • www.abracattleco.com
Visitors always welcome!