

NOV 2018

# MHN

## Missouri Hereford News

Official Publication of the Missouri Hereford Association

# Learning from *Experience*

*Inside this issue*  
2018 Field Day Success  
Fall & Christmas Favorites  
Hands-On Education Working Hard  
SEMO Show Results  
Drought Supplement Feeding

Missouri Hereford News  
30487 Hwy J  
Wentworth, Missouri 64873

Printed  
Standard  
US Postage  
PAID  
StateGroup

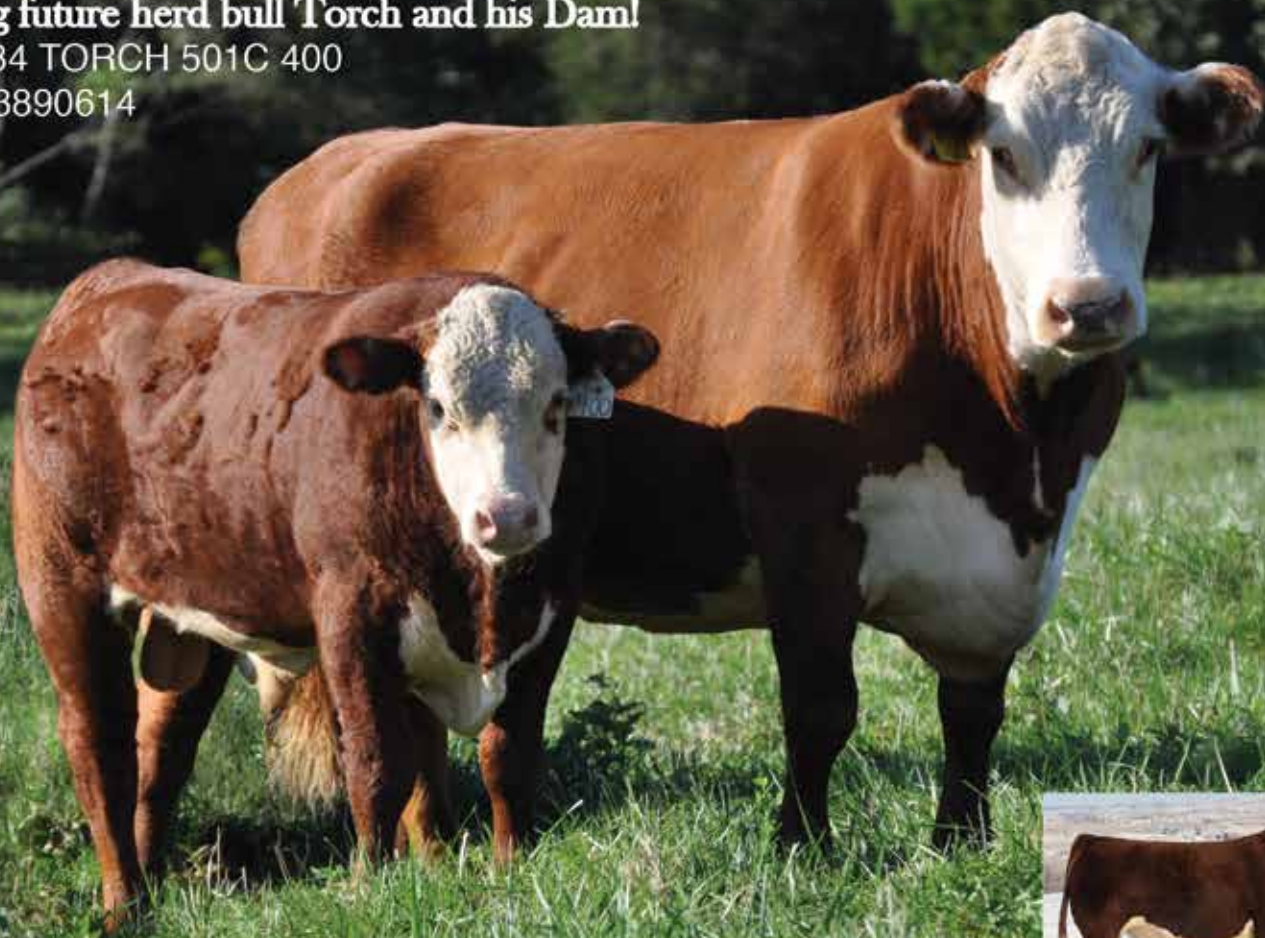


# KACZMAREK 4K HEREFORDS

**Featuring future herd bull Torch and his Dam!**

Kacz Z034 TORCH 501C 400

Reg #: 43890614



## October 13, 2019 - Retirement Dispersal Sale - Salem, MO

Bill and Roberta Kaczmarek will be featuring 48 years of their Hereford genetics.

Offering several Kickstart offspring

The sale will offer cow/calf splits, herd bulls, show heifer prospects, bred heifers, embryos, and semen.

They will be passing the "TORCH" to their sons, Joe and Tony, to continue their legacy of raising Hereford cattle.



KACZ 111W Tradition 501C F490

Reg #: 43891159



KACZ 8A Spark 501C F401

Reg #: 43890615



KACZ 58Y Franchise 501C F480

Reg #: 43891024

**Tony Kaczmarek**

573-202-4132

3ajkacz@gmail.com



**KACZMAREK 4K HEREFORDS**

Dent County Rd 3210, Salem, Mo.

**Bill and Roberta Kaczmarek**

573-729-5923

**Joe Kaczmarek**

417-894-1505

4joekaczmarek@gmail.com



**KACZMAREK HEREFORDS**



# SHOW-ME POLLED HEREFORD CLASSIC

**Saturday, Nov. 17, 2018 - Noon**

**Selling 90 Lots**

**Hosted by Roth Hereford Farm, Windsor, Mo.**

**8 miles NW on Hwy 2, then 1 mile South on Hwy J**



**RF 0109 Country Lady 64C P43590208**

A red-eyed, great producing daughter of H W4 Pure Country 0109 out of a superb cow family. She has an excellent heifer calf by EFBeeF U208 Sure Bet Z002 and is remated to MPH 10H Splash B12.

**P43655476 RHF 4R Ruffian X395 6011D ET**

A great uddered daughter of the famous donor cow, X395 and sired by MSU TCF Revolution 4R. A rare opportunity to purchase a 2-year-old with her potential.



**Walker Miss 162 175 636D P43688031**

A Walker WhiteHawk 7115 2328 162 daughter selling with a March bull calf Sired by R Leader 6964.

**P43948006 RHF D1 Whistlin' Dixie 8038F**

A tremendous daughter of the popular MPH Z311 Rampage D1 out of a Trust daughter out of a Dam of Distinction. The dam by Trust also sells. One of the very best.



**RF 49X Ms Vickie 97C P43590539**

Top producer here. Dam ratios 104, grandam and great-grandam both Dams of Distinction. Has a heifer calf by EFBeeF U208 Sure Bet Z002. Bred to CHEZ Dante 652D.

**P43467367 RHF 100W Amelia 3070A**

A Trust daughter that is a powerful female. She has an outstanding heifer calf by LJR MSU 6Y All In 260A. Bred to JDH Victor 719 33Z.



**PRF P606 Ariana 319A P43444801**

This P606 is an excellent producing cow with a heifer calf by GG Time 0124 408B. Mated to MPH Z311 Rampage D1.

**P43785850 RLS Z311 Belle 638**

A super freckled-faced, freckled-uddered daughter of the popular KCF Bennett Encore Z311. She has a heifer calf by JMS Victor 202 586. Wow! What a pair. A crowd favorite on the recent Missouri Hereford Tour.



**Complete Mature Cowherd Dispersion of  
Glengrove Farm**

Bob and Gretchen Thompson  
12905 C.R. 4010 • Rolla, MO 65401  
573-341-3820

**Steinbeck Farms**

2322 Drake School Rd.  
Herman, MO 65041  
573-680-0954

**Dale Stith, Auctioneer**

**ROTH  
HEREFORD  
FARM**



**PHILLIPS-RENNER FARM**  
Richmond, Mo.  
816-878-7305

Ed & Carol  
1146 NE Hwy. J, Windsor, MO 65360  
660-694-2569 • 660-351-4127 cell  
Eddie, Mary, Lane and Levi  
660-351-4126  
croth745@earthlink.net

Sale Managed by  
Midwest Cattle Service  
660-527-3507  
catalog online  
www.reedent.com  
bid online at  
LiveAuctions.TV

**REED  
FARMS**  
Registered Polled  
Herefords

Jim and Linda Reed  
P.O. Box 126 • Green Ridge, MO 65332  
660-527-3507 • Fax 660-527-3379  
reedent@iland.net • www.reedent.com



# Editors

The smells are wonderful outside and the warm sun seems to be more of a welcome this time of year after a hot summer. The air is cool and everything around us shows signs of harvest, gathering and the near close to another year.

We hope you enjoy this issue of the Missouri Hereford News. Our hope is there is something everyone can read and enjoy. Just as life is about balance, we've included articles that make you think, enjoyable holiday ideas, cattle news and many purchasing opportunities yet this fall.

The Missouri Hereford weekend in Sedalia is coming up in December. Be sure to check on the details in this issue as well as all the other events between now and the March issue.

Wow, the next time we publish this will be in 2019! Not sure where the time goes, but it is flying quickly as the new year is in sight. If you have never advertised in the Missouri Hereford News or on the association website, we hope you will consider doing this while you plan out your yearly marketing needs and budget. We would love to discuss these options with you in person. Don't forget, some of our prime pages will be auctioned off at the annual state meeting and banquet.

We know our readers love reading the Around the Barn section. If you have news that comes up or you hear about, please be sure to send us a quick email or text message, so that we can include the newsworthy information in our next issue. We need your ears and eyes to help us get this news gathered.

It has been a challenging year weather wise for some in our state. Be sure to read about the recommendations and challenges Dr. Eric Bailey of the University of Missouri addresses. The better we take care of our cows, the better they take care of us.

We hope each of you has a very happy holiday season filled with many blessings, laughs, good food and of course Hereford cattle.

- The Editors, *Rural Route Creations*

Cassie Dorran, editor

Jocelyn Washam, editor



This newsletter is edited by  
**Rural Route Creations**  
30487 Hwy J • Wentworth, MO 64873  
[www.ruralroute creations.com](http://www.ruralroute creations.com)

## 2018 Publication Dates

Issue	Ad Space & Material Deadline	Camera Ready-Ad Submission
March 1	Jan 22	Jan 26
July 15	June 11	June 15
September 15	Aug 13	Aug 17
November 1	Sept 27	Oct 3



“The *better* we take care of our cows,  
the better they *take care of us*.”

### Advertisement & News Submissions:

Cassie Dorran 403-507-5953 [cassie@ruralroute creations.com](mailto:cassie@ruralroute creations.com)  
Jocelyn Washam 417-838-5546 [jocelyn@ruralroute creations.com](mailto:jocelyn@ruralroute creations.com)

*Rural Route*  
CREATIONS

## Advertising Rates:

Advertising rates include design at no extra cost! Two design proofs will be provided by email with each advertisement purchase. If additional changes or inclusions need to be made after the second proof, the advertiser will be billed at \$50 per hour.

All contracted ads are for the current calendar year.

Ad Type	Cost Per Issue	4X Contract Price
Full page color ad	\$275	\$1000*
Half page color ad	\$150	\$528
Full page b&w ad	\$222	\$792
Half page b&w ad	\$135	\$475
Quarter page color ad	\$70	\$255
Business card color ad	(contracted only)	\$150

\* All ads must be received by deadline!





IN THIS  
*Issue*

- 4 | Words from the Editors
- 4 | Publication Dates and Advertising Rates
- 5 | Missouri Hereford Association Officers
- 8 | State Association Update
- 8 | CHB Feeder Calf Sale
- 10 | News from the American Hereford Association
- 12 | Women Association Update
- 12 | The Ranch Kitchen Recipe
- 14 | Junior Association Update
- 14 | Junior Advisors' Corner
- 15 | 2019 Missouri Hereford News Media Guide
- 17 | Holiday Favorites from the Editors
- 26 | Sale Results
- 28 | Around the Barn
- 33, 41 | Missouri Cattle Industry Convention & Trade Show
- 34 | Southeast Missouri District Fair Show Results
- 36 | Life is Simple
- 38 | Association and Industry Events and Deadlines
- 45 | Advertising Index

**8-10** *Missouri* Hereford Field Day  
A successful event in District 6

**32-33** College of the *Ozarks*  
Herefords provide work stations and hands-on learning

**40-41** Cattle Management During *Drought*  
Dr. Eric Bailey Discusses Supplement Feeding



**8-10**



**32-33**

*Missouri Hereford Association*

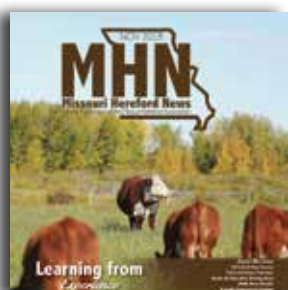
Officers and Directors

[www.moherfords.org](http://www.moherfords.org)

<i>President</i>	Justin Sissel	Elkland	District 7
<i>Vice President</i>	Mark Abramovitz	Columbia	District 5
<i>Secretary/Treasurer</i>	Matt Reynolds	Huntsville	
<i>Directors</i>	Amy Phillips	Richmond	District 1
	Brian Littleton	Keytesville	District 2
	Mary Beth Ray	Paris	District 3
	Tim Bernt	Leeton	District 4
	Rick Steinbeck	Hermann	District 6
	Travis McConaughy	Wasola	District 8
	Darrell Aufdenberg	Jackson	District 9

To download a Missouri Hereford Association membership application and to view most current events, applications and announcements, visit the Missouri Hereford Association website at [www.moherfords.org](http://www.moherfords.org)

**Missouri Hereford Association**  
Matt Reynolds,  
Secretary/Treasurer  
1071 C.R. 1231  
Huntsville, Missouri 65249  
660-676-3788



Cover photo  
© Rural Route Creations



*Our first calf last spring  
was born during a freezing rain. I knew  
if I didn't bring her in the house,  
she'd freeze to death.*



*I was  
up all night using my hair dryer to  
warm her up. I guess we both fell asleep,  
because the next morning my alarm was  
a bellowing calf in the bathtub.  
- Nicole S., Manawa WI*

**KEEP THEM SAFE EVEN BEFORE DAY ONE.** From blankets and bottles to heat lamps and hair dryers — there's not much you won't do to protect your newborn calves. But what about your vulnerable, unborn calves? Zoetis is the only one to offer a complete portfolio of reproductive vaccines backed by the Fetal Protection Guarantee. That means when you immunize Mom against reproductive diseases, she extends that superior protection on to her unborn calf. It's a big step in protecting your calves, even before they take their first step.

**LEARN MORE AT [FETALCALFPROTECTION.COM](http://FETALCALFPROTECTION.COM).**

The Zoetis 100% BVD PI-Free Guarantee and the IBR Abortion Guarantee will be administered through Zoetis Veterinary Medical Information and Product Support (VMIPS) at 800-366-5288. Proof of purchase is required. Calves born to BVD PI-positive cows or heifers do not qualify for the guarantee. This guarantee does not apply to, and Zoetis shall not be liable for, any (x) damages caused as a result of the improper handling, misuse or abuse of the vaccines that are the subject of this guarantee, or the willful misconduct or negligence of any third party, or (y) indirect, punitive, special, incidental or consequential damages. Zoetis reserves the right to modify or cancel the terms and conditions of this guarantee.

All trademarks are the property of Zoetis Services LLC or a related company or a licensor unless otherwise noted.  
© 2017 Zoetis Services LLC. All rights reserved. GBF-00090

**zoetis**



**FTF**

# Fall Sale Consignment Opportunities

**Bred Heifers available at the Missouri Opportunity Sale on December 2nd in Sedalia, MO.**  
**Bulls available at the Herefords In Native America Sale on November 19th in Marietta, OK.**

## FTF Ms Revolution 7201E



Sells bred to **KCF Bennett Homeland C34** with heifer pregnancy.  
 MSU TCF Revolution 4R/ KJ 2403 Recruit 966R/ TCC Canadian Blend 3E

CED	BW	WW	YW	Milk	M&G	\$CHB
2.0	2.5	53	81	22	49	104

## FTF Leading Lady 749E



Sells bred to **FTF Powerhouse 455B son** with bull pregnancy.  
 R Leader 6964 / FTF Prospector 145Y / MSU TCF Revolution 4R

CED	BW	WW	YW	Milk	M&G	\$CHB
4.6	3.3	76	122	28	66	126

## FTF Powerhouse 7407E



A very well balanced maternal oriented bull.  
 FTF Porterhouse 455B / Grandview 7Oaks Sonora 145R / FTF Bombardier 309N

CED	BW	WW	YW	Milk	M&G	\$CHB
1.5	1.5	59	88	30	59	105

## FTF Powerhouse 7422E



An easy fleshing powerful bull that should be a real cow maker.  
 FTF Porterhouse 455B / FTF Rib Eye 153Y / CJH Harland 408

CED	BW	WW	YW	Milk	M&G	\$CHB
4.8	2.7	68	112	31	65	85

**FTF**

Glenn & Yvonne Ridder  
 16789 Ridder Rd. Marthasville, MO 63357

John, Heidi, Madi, & Ben Ridder  
 636-358-4161

[www.fallingtimberfarm.com](http://www.fallingtimberfarm.com)

**Falling Timber Farm**  
**Marthasville, MO**

Find us on Facebook:  
 Falling Timber Farm





## Update

Hereford Enthusiasts, Fall is upon us and the weather has definitely been to the extremes this year. We have had the droughts of 2018 to the floods of 2018. I am concerned as I see our cattle hairing up quicker than in the past. This makes me wonder what we have to look forward to as we go through this winter. I hope the best for each of you as you deal with what Mother Nature does out to you.

If you have nominations for any of the awards at the annual meeting and banquet, let your area director know. Check out our website for your director contact information. These are very meaningful awards to those who receive them. Help us identify who you think deserves them. The



**Justin Sissel**  
Missouri Hereford Association  
President

the confidence to consign their top quality cattle to our state association sale. Please make sure to mark December 1-2, 2018 on your calendar. State sale weekend is a very worthwhile trip to network with fellow breeders, fellowship with friends, support juniors, and acquire top-notch genetics.

If you ever have any questions or concerns, do not hesitate to call me (417) 818-8714.

“Help us identify who you think deserves them [Missouri award nominees].”

*The 2018 Missouri Hereford Field Day was very well represented. Members made five stops in District 6, viewing cattle, taking in industry news and enjoying camaraderie.*

[www.moherfords.org](http://www.moherfords.org)



## Sale Contacts

### SOUTH CENTRAL REGIONAL STOCKYARDS

Dave Patton 573-308-6655  
Ross Patton 573-308-6657  
Bill Patton 573-308-6658

### AMERICAN HEREFORD ASSOCIATION

Joe Rickabaugh 816-842-3757 office  
785-633-3188 cell  
Trey Befort 816-842- 3757 office  
620-770-3419 cell

### MISSOURI BREEDERS CONTACTS

Joe Kaczmarek 417-894-1505  
Steve Green 417-693-7881  
Travis McConaughy 417-989-0486

## CHB Feeder Calf Sale

*November 14, 2018*  
SOUTH CENTRAL REGIONAL STOCKYARDS  
Vienna, Missouri

## Cattle Health Programs

### Star Vac Plus (Red tag) HOME RAISED

#### REQUIRED VACCINATIONS

##### 1st Round

IBR-BVD -P13-BRSV (KILLED VIRUS)  
PASTURELLA  
7 WAY BLACK LEG  
HAEMOPHILUS SOMNUS

##### 2nd round 3-6 weeks later

IBR-BVD-P13-BRSV (MODIFIED LIVE VIRUS)  
PASTURELLA  
7 WAY BLACKLEG  
HAEMOPHILUS SOMNUS

WEANED 30 DAYS, CASTRATED/HEALED, DEHORNEED  
OR TIPPED, HEIFERS GUARANTEED OPEN, DEWORMED &  
DELOUSED

#### Both Health Programs

Any additional health or management practice will be announced at time of sale.

Steers Tagged in Right Ear and Heifers Tagged in Left Ear

### Star Green (Green tag) HOME RAISED

#### REQUIRED VACCINATIONS

IBR-BVD-P13-BRSV  
PASTURELLA  
7 WAY BLACKLEG  
HAEMOPHILUS SOMNUS

CASTRATED, DEHORNEED OR TIPPED, TREAT FOR EXTERNAL  
PARASITES, HEIFERS GUARANTEED OPEN





# Missouri Hereford Field Day District 6 | Sept. 7-8

## Thank You to Our Sponsors

Abrakadabra Cattle Co  
 American Hereford Association  
 Biglieni Farms  
 Bourbeuse Bend Herefords  
 Country Meat Shop  
 Falling Timber Farms  
 Franklin Co. Animal Medical  
 Center (Dr. Hunt Tainter)  
 Genex  
 Joe Rickabaugh  
 MFA of Gerald, MO  
 Missouri Hereford Association  
 Mueller Farms  
 Reynolds Herefords  
 Steinbeck Farms  
 Vita Ferm



### 2018 Missouri Hereford Field Day

Hereford breeders gathered in Northeast Missouri for the District 6 Missouri Field Day, September 7-8, 2018. Missouri Hereford Board Member Rick Steinbeck along with the committee organized a great weekend!

The field day festivities started off Friday evening with a meal and social at Biglieni Farms followed by the Missouri Hereford board meeting.

The first stop on Saturday was Biglieni Farms in Sullivan, Mo., hosted by the Tom Biglieni family. The morning started off with a breakfast spread followed by a cattle tour and rounded off the stop with reports from Joe Rickabaugh and Matt Reynolds.

Bourbeuse Bend Herefords in Beaufort was the second stop on the tour. Although mother nature graced the area with rain, a good turnout of people viewed the cattle on display from the Voss Family.

Lunch was served at White Mule Winery in Owensville. Attendees enjoyed presentations from Keith Moore and Noble Carpenter of MFA of Gerald, Mo.

The Steinbeck family of Hermann, Mo., hosted the fourth stop on the tour. Desserts and drinks were served followed by a display of cattle and presentation by Rick Steinbeck.

Rounding off the event Saturday was a fun evening at Falling Timber Farms of Marthasville, Mo. Attendees were able to take in a complete tour of the Falling Timber operation by tractor and wagon. A meal, numerous door prizes and a band topped off the night's festivities!

Not only was a great deal of knowledge gained, the sponsors were abundant in donations and door prizes. Thank you to all the sponsors for making the field day such a success!





## American Hereford Association

### Annual Meeting

What a summer and beginning to the fall. From no feed and abnormally dry weather to when is the ark coming describes the weather in Missouri. Now living in Missouri, the last few years, I have a greater appreciation for you as Hereford breeders. It has taken some time for me to adjust to the fescue environment, but this summer added another layer, I have realized although fescue is not very drought resistant it is resilient and will come back with rain. For a couple of months, I wondered if I would ever see green pastures again. I hope all of you are on your way to mending pasture ground and you were able to secure enough hay for the winter.

I want to take the time to share some highlights that are going to take place at the AHA Annual Meeting this year. If you are reading this and it is not later than October 26 you still have time to come to Kansas City and take part in the educational forum on Friday afternoon from 12:30-4:30 p.m. We hope you can attend as there are several great topics that we are going to share about

future programs and goals that we have here at AHA.

### 12:30 - 2:15 p.m. — Session One

#### MyHerd: Revamped and Revitalized

Join us for an overview of the updated MyHerd system. The session will feature a demonstration of the changes and new capabilities the site will have to offer.

This exciting new launch will take place sometime in November and will be a definite up-grade in terms of speed and user interface. The biggest transition will be logging in with your preferred email instead of your member number. Please keep a watch for emails and website information at [hereford.org](http://hereford.org) for this transition.

#### Onward and Upward: Maximizing the Use of Genetic Selection Tools

Stack your deck with economically relevant traits by utilizing this session to further understand the value of selection indexes.

This section will cover the recent update of converting the dollar indexes to an economic scale as well as an opportunity to leverage

your data more effectively. Also, the Whole Cow Herd DNA Project will be discussed. Member enrollment ends 12/31/2018.

### 2:30-4:15 p.m. — Session Two

#### Continuing the Tradition: Positioning the Certified Hereford Beef® Brand for Success

Join the Certified Hereford Beef® team and industry partners for a discussion regarding improved Certified Hereford Beef brand USDA specifications and what they mean for Hereford producers, Certified Hereford Beef packer and distributor partners, and ultimately the end consumer.

An exciting panel of industry partners and CHB staff will discuss the recent modification of the CHB specifications of moving to an all choice program. This modification will take place 1/1/2019.

#### Modern Marketing: Redefining the Sale Catalog

A comprehensive review of the new Hereford Publications Inc. (HPI) online catalog format. This seminar will highlight the various features this product has to offer.

The HPI team will explain their latest marketing opportunity through the development of an online catalog that will have the capabilities to play video interaction while viewing the catalog as well as receive weekly genetic evaluation updates. Stay up to date through [hereford.org](http://hereford.org) on how to utilize this one of a kind tool.

— *Shane Bedwell*, AHA Chief Operating Officer and Director of Breed Improvement





# Missouri

## Hereford Association

### Opportunity Sale

**December 2, 2018**

Noon • Missouri State Fairgrounds  
Sedalia, MO

Consigned by:  
37 Breeders from  
Missouri, Kansas & Illinois

- - - *The Offering* - - -

Bred Heifers • Show Heifers • Fall Pairs • Open Fall Yearlings • Spring Pair Splits • Herd Bulls

## 70 LOTS SELL



Fall calving four-year-old sells with  
a 9-28-18 heifer calf sired by  
CRR 028X Roll Tide 612



Fall calving three-year-old sired  
by Hometown 10Y sells with a  
heifer baby!



February show heifer prospect  
sired by UPS Sensation 2504 ET



Polled Fall yearling herd  
bull prospect sired by  
MPH 10H Juice Box Z3



A big time bred heifer sired by  
R Leader 6964 - bred to  
KCF Bennett Homeland C34



Outstanding MSU TCF Revolution  
4R heifer bred to  
KCF Bennett Homeland C34

### Sale Staff

**Matt Reynolds**, reynoldscattle@cvalley.net, 660-676-3788  
**Cody Lowderman**, Auctioneer, 309-313-2171  
**Joe Rickabaugh**, AHA, 785-633-3188  
**Jim Reed**, Midwest Cattle Services, 417-860-3102  
**Don Birk**, Birk Enterprises, 417-860-8595

### Online Bidding

LiveAuctions.tv **LiveAuctions TV**  
**Hannah Copenhaver**, 660-909-7472  
**Brad Fahrmeier**, 816-392-9241  
brad@liveauctions.tv

Catalog available upon request

View catalog on [www.hereford.org](http://www.hereford.org) under marketplace or [www.moherfords.org](http://www.moherfords.org)

Annual Meeting & Banquet • Saturday, December 1, 2018 at 5 PM • Awards Banquet 6 PM



## Update

We are in the process of putting together a cookbook to sell as a fundraiser. We are hoping to have the cookbook soon. We will be selling the cookbook for \$10. We are hoping to be selling the cookbook at the American Royal and at the Missouri Hereford Association Banquet and Sale.

We are once again offering a scholarship in the amount of \$250 that will be awarded at the Missouri Hereford Banquet. We encourage all high school seniors and college students male or female to apply. The scholarship check will be awarded at the presentation. The deadline is October 15. The application can be found on the Missouri Hereford website under Hereford Women.

The Missouri Hereford Queen program this year will be now co-chaired by Anna Roth and Shelby Bagnell. The application is located on the Missouri Hereford website under Hereford Women. Queen applications need to be mailed to Anna Roth. Her address is: 505 E Bear Blvd Apt 5; Springfield, MO 65806. The deadline is November 1.

Please look at the Hereford Women of Missouri Facebook page for updates for what we will

Watch for the new Hereford Women of Missouri cook books. They can be purchased for \$10 at the next event or from a Hereford Women of Missouri member.

be doing for the MHA Annual Meeting and Banquet, which will be held on December 1 in Sedalia. In the past we have set up appetizers and drinks during the social hour. We would appreciate the donation of appetizers during the social hour. We will post on the Facebook page closer to the banquet what donations will be needed for the drinks. Jocelyn Washam will be in charge of table decorations for the state banquet.

We would also encourage our members to donate items for the silent auction and live auction. If anyone would like to donate items please bring them to the banquet on Saturday night. Last year this was our biggest fundraiser of the year.

We are always accepting new members to our organization. Our annual dues are \$15 and can be mailed to Marijane Miller.

– *Tonya Bagnell*, Hereford Women of Missouri Secretary



## Hereford Women of Missouri Officers

**President** – Katherine Fuller  
816-547-1545  
Katfuller1@aol.com

**Vice President** – April Miller  
816-305-7490  
Aprilmiller1732@gmail.com

**Secretary** – Tonya Bagnell  
660-631-2109  
Tbagnell6452@gmail.com

**Treasurer** – Marijane Miller  
317-341-3846  
millerherefords@yahoo.com

Mail \$15 Hereford Women of Missouri dues to  
20500 Sioux Drive,  
Lebanon, MO 65536

**Queen Co-chairs** –  
Shelby Bagnell  
660-630-3361  
Shelby.bagnell@hughes.net

Anna Roth  
573-579-7424  
anna.roth15@gmail.com

Find us on 



# Sweet and Salty Toffee Crackers

## Ingredients

- 1 1/4 sleeves Saltine Crackers
- 1 cup white sugar, granulated
- 1 cup brown sugar, light
- 1 teaspoon(s) vanilla
- 2 stick(s) unsalted butter
- 1 package(s) Heath Toffee Bits - Bit O' Brickle Toffee Bits - about 1 1/3 cups



## Instructions

1. Place crackers on a greased foil lined cookie sheet. The cookie sheet needs to be large enough to fit all crackers side by side with little to no overlap.
2. In a Teflon coated/nonstick cooking pan melt butter, then add white and brown sugar and vanilla.
3. Continue to cook and bring to a boil and then down to a low to medium heat/boil for 3 minutes stirring constantly.
4. Carefully pour sugar/butter mixture over the crackers trying to cover as many crackers as possible.
5. Immediately top with Heath Toffee Bits and place in a 375 degrees F oven for five minutes on the middle rack.
6. Turn off oven and allow crackers to sit for another 15 minutes in the closed oven.
7. Cool, break apart and place in airtight metal tins lined with wax paper between layers or in the container of your choice.

<b>Prep Time</b>	10 Minutes
<b>Cooking Time</b>	5 Minutes
<b>Serves</b>	12
<b>Calories</b>	50



# From our *Hometown* to yours



MPH 74Z Natilie 4R 72C  
Due mid October to MH T-Bone 0725 ET



MPH 81S Candy 10Y 1535  
August Heifer Calf Sired by: MH T-Bone 0725 ET



MPH 73Z Natalie 10Y 1649  
August Bull Calf Sired by: MH T-Bone 0725 ET

Check out our  
**2018 Missouri Opportunity  
Sale Consignments**  
**December 2, 2018 • Sedalia, MO**

*Watch our Website for Videos • [muellerfarmsphandangus.com](http://muellerfarmsphandangus.com)*

Check out our  
**2018 Heart of  
America Sale  
Consignments**  
**November 18, 2018**  
**Greenville, IL**



MPH 71A Vicki 0124 70C  
August Bull Calf Sired by: T-Bone at side



## *Mueller Farms*

2045 PCR 520 • Perryville, Missouri 63775  
Brad: 573- 517-2999  
[bradmuelleph@yahoo.com](mailto:bradmuelleph@yahoo.com)





Hope everyone has adjusted to getting back into the school routine, activities and all the homework. Now, if we could just have some cool, fall weather so we can enjoy football, pumpkins and chili.

To all the juniors and families, our next meeting will be at the Opportunity Sale in Sedalia, Mo., on Saturday, December 2 at 9 am. There will be a banquet and awards for outstanding juniors the Friday night before. Can't wait to see everyone! Don't forget your silent auction items! We will have a concession stand Sunday before the sale. If you are able to help in the concession stand that would be great. We are asking that all families please bring a case of soda or water and desserts that we can sell in the concession stand. All the money goes towards the juniors. If you have any questions, please contact Shannon Mueller or Mary Roth.

If you are looking for Christmas presents, the juniors will be selling two different t-shirts at the Opportunity Sale for \$15 a piece! We will be signing up for contests for Junior Nationals, so if you would like to do a contest please be thinking about which contests interest you. Junior Nationals will be in Denver, CO July 6-13, 2019! If you have any questions about the contests, please contact Susan Rhode.

Hope everyone has a wonderful Thanksgiving, and we will see you all in December!

*Phillip Mueller, Missouri Junior Hereford Association Reporter*

Find us on 

## Advisors' Corner

### Count Your Blessings

As we make our way into the Thanksgiving and Christmas seasons, I encourage each of you to take a step back from the hustle and bustle of everyday life and pause for a moment to appreciate all that you've been given. If your house is like ours, the struggles of getting the "to-do" list done each day sometimes overshadow all the good things that surround us. I believe this rings especially true for our involvement in the Hereford business. Here's a few "Hereford" blessings that come to mind for me:

Our Missouri Hereford family—I feel the blessing of our Hereford family at every event we attend. The "hellos," smiles and hugs we receive from others are genuine and sincere. Working together towards common goals for our kids and families creates a bond among us that is truly special. Even though the time we spend together is just a few days each year, those days are cherished and enjoyed by all. What a blessing. Tremendous support from our state—both the Missouri Hereford Association and Missouri Hereford Women are committed to the success of our juniors. We benefit from that support at every event throughout the year. Thank you for the scholarships you support, the donations of both time and money to help our events run smoothly and the guidance and experience we need to help our association grow and prosper. What a blessing.

Our kids—Our MJHA members inspire me. From the young women that retired this year from our junior programs to the pee wees that have their whole show career ahead of them, these kids are amazing. Their hard work and dedication to their projects, our association and their friendships with each other make us proud every day. What a blessing.

There's an old hymn that we sang often in the little country church where I grew up that went "Count your blessings, name them one by one. Count your many blessings, see what God has done." I hope you all take some time to count those blessings—one by one.

— Jeff and Susan Rhode, Missouri

Junior Hereford Association Advisors

## Missouri Junior Hereford Association Officers

**President** – Rachael Bagnell

**Vice President** – Jacob Toombs

**Secretary** – Dalton Reynolds

**Treasurer** – Taylor Miller

Mail \$15 Missouri Junior Hereford Association dues to  
20500 Sioux Drive, Lebanon, MO 65536

**Reporter** – Phillip Mueller

**Fundraising Chair** – Haleigh Ferguson

**Directors** – Isaac Rhode, Conner Bolch, Aidan Kleinman

**Advisors** –

**Jeff & Susan Rhode**

7765 NW Hwy NN, Stewartsville, MO 64490

816-261-4819 Jeff Cell or 816-261-4821 Susan Cell

Susan.rhode@yahoo.com

**Brad & Shannon Mueller**

2045 PCR 520, Perryville, MO 63775

573-517-2999 • Muellers29@yahoo.com

**Eddie & Mary Roth**

1178 NE Hwy J, Windsor, MO 65360

660-351-4126 • rothconcrete3@gmail.com

## GREGORY POLLED HEREFORDS Since 1932

### JD Gregory

19469 Houston Road

Houstonia, MO 65333

660-568-3559

### Kevin & Barbara Gregory

19620 Houston Road

Houstonia, MO 65333

660-568-3582 660-620-3585

gphfhereford@gmail.com

Bulls for Sale!  
Come see us for  
your next herd sire!



Visit Gregory Polled  
Herefords  
on Facebook




Business Branding • Advertisements • Social Media  
Web Design • Catalogs • Signage • Eblasts

www.ruralroute creations.com

Cassie Dorian 403-507-8953  
cassie@ruralroute creations.com  
Jocelyn Washam 417-338-5546  
jocelyn@ruralroute creations.com

**Rural Route**  
CREATIONS  
ONE-STOP MARKETING





## Missouri Hereford News

At the banquet in December, prime pages of the MHN including the inside front cover, page 1, center spread left, center spread right, inside back cover and back cover will be auctioned off. The highest bidder will then invest this premium plus the contracted 4-issue full page price for the year. All other advertisement pages are placed on a first-come, first-serve basis.

The 2019 Missouri Hereford News (MHN) Media Guide will be released December 1 in Sedalia, Mo., at the Missouri Hereford Association (MHA) annual meeting and banquet. Watch your email

for the media guide to be posted to the Missouri Hereford Association (MHA) website also. The guide will contain the publication schedule, advertising rates and ad sizes. January 23 is the deadline to receive the contracted 4-issue rate for the new year as well as the date to book ad space for the March 2019 issue. Take advantage of the contract discounts by booking early!

In 2018, close to 100 advertisers chose the publication as a marketing venue and an 250–500 extra copies have been printed for each issue allowing copies of the MHN to be handed out at numerous Missouri events and national Hereford sales and shows. The dispersal of these extra copies has increased the readership and visibility on a national level. If you have a location in mind in your area to further help place the publication, please let the editors know, and extra copies will be shared.

To help make the Missouri Hereford News as informative as possible and highlight our members, we welcome all results, events, and membership news submissions to the editors for inclusion in the publication!



January 23 - contracted 4-issue rate & ad material submission deadline  
January 29 - Camera-ready ad submission deadline

# Advertise on the web!



## Missouri Hereford Website

Since the new, mobile-friendly website launch in March 2017, there have been 16,000 website views to date. On average, the website has 50 visits a day with peaks at certain times when RRC sends out eblasts to the MHA membership and pushes notifications on the RRC Facebook in regards to the MHA and MHN.

The **homepage banner ad** will also be auctioned off at the Missouri Hereford banquet with the winning bidder receiving this advertisement space for the 2019 year. Other advertisements will be sold at a first-come, first-serve basis, so be sure to contact **Jocelyn Washam** to reserve your space, as these fill up fast. Promote your operation with a great presence on the web!



## Here's Your Opportunity...Missouri Opportunity Sale - Dec. 2, 2018



**BRF MISS HARMONY'S LYRIC 4D**  
 Reg: 43693138 DOB: 02/20/2016  
 Sire: H H PERFECT TIMING 0150 ET  
 Bred to Powerball 4/3/18



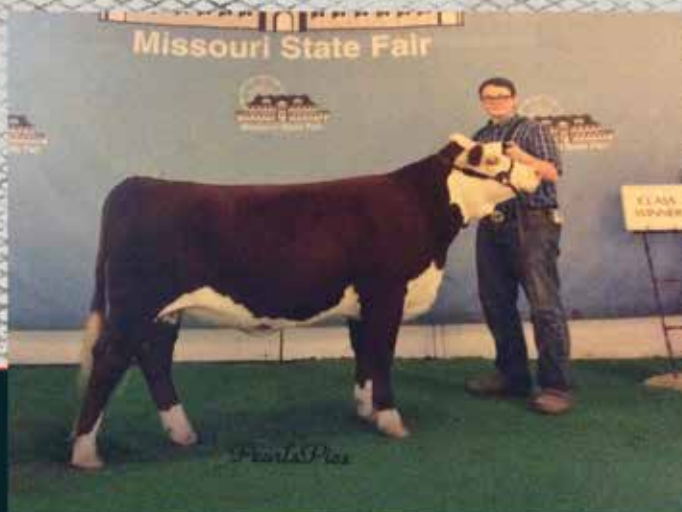
**BRF MISS HOMETOWN INDEPENDANCE 1B ET**  
 Reg: 43693138 DOB: 02/20/2016  
 Sire: H H PERFECT TIMING 0150 ET  
 Bred to Powerball 4/3/18

### Blue Ribbon Farms

11768 W. Farm Rd. 34 • Walnut Grove, MO 65770  
 Jeff & Stephanie Rawie • 417-209-5538 cell • jeffrawie24@yahoo.com  
 Aaron & Kylie Noble

## Congrats Conner!

"Ariel" - September Logic X Tundra heifer  
 MSF open show class winner, 2nd place in FFA Show



### FOR SALE

Two 2-year-old bulls out of  
 Hometown for sale. Yearling heifers  
 and steers also for sale.  
**Contact Jack.**

### 2018 Missouri Opportunity Sale

Consigning a September heifer  
**CJB Violet E98 • P43904496**  
 Twentytwelve X About Time

## Tri-L Polled Herefords

Jack and Alicia Lewis • Katherine Fuller • Conner Bolch  
 19417 NE 178th Street • Holt, Missouri 64048  
 816-628-5571 Home • 816-421-4075 Business  
 816-797-8020 Cell





### **Favorite Thanksgiving Dessert?**

*Cassie:* Derby Pie  
(Pecan but add a few chocolate chips!)

*Joelyn:* Definitely Pumpkin Pie!

### **The most tasteful appetizer for a family gathering?**

*Cassie:* Cheesy squash fritters

*Joelyn:* Non-traditional appetizer for our family would be chips, salsa and queso!

### **Favorite thing about Fall?**

*Cassie:* Everything pumpkin and orange like my alma matter

*Joelyn:* Cool temps, fall baking and cattle on gorgeous pasture

### **What are you most thankful for this year?**

*Cassie:* Health, happiness and helping hands surrounding my family coupled with an incredible group of customers!

*Joelyn:* Family, friends, health, and the ability to work with livestock producers in the Ag Industry!

### **What is your favorite Thanksgiving scent?**

*Cassie:* Apple Cider and red hots cooking

*Joelyn:* Mahogany Teakwood scent from Bath and Body Works

### **Favorite Thanksgiving Tradition?**

*Cassie:* Watching the Thanksgiving Day parade with a full belly.

*Joelyn:* Big family gatherings with lots of food, fun and many laughs!



# *Favorites from the Editors*

### **How do you make your home festive for the holidays?**

*Cassie:* Well...our house kind of turns into Santa's workshop! I love going outside and picking fresh garland, filling the house with all the winter smells. Christmas baking is a must and coordinating gift wrapping for friends, family, customers and neighbors alike.

*Joelyn:* Christmas lights outside, two large Christmas trees, Christmas decor in EVERY room, baking cookies and goodies throughout the week of Christmas, garland over the kitchen cabinets and Christmas candles throughout the house!

### **All-time favorite Christmas Movie?**

*Cassie:* Elf for fun or Miracle on 34th Street for all the Christmas feels

*Joelyn:* National Lampoon's Christmas Vacation  
(I know it word for word)

### **What is your favorite Christmas scent?**

*Cassie:* Rosemary cooking on something delicious in the kitchen

*Joelyn:* Cinnamon candles

### **White Christmas?**

*Cassie:* Oh my goodness, nothing prettier than fresh snow on the evergreen trees.

*Joelyn:* Yes! I would love to have little snow for Christmas!

### **Favorite Holiday Tradition?**

*Cassie:* Reading 'Twas the Night Before Christmas as a family on Christmas Eve, feeling all the excitement that Santa will soon come!

*Joelyn:* We always celebrate with big family gatherings, and I love to play Christmas games and watch holiday movies! And eat tasty food of course!

### **Favorite food to gift neighbors and friends during the holiday season?**

*Cassie:* Scotcheroos, I dare you not to fall in love with these, and all kinds of fudge

*Joelyn:* The Pioneer Woman's Cinnamon Rolls with maple frosting and cinnamon crack candy!





Put some **EXCITEMENT** in your herd!



**R EXCITEMENT 4356**

Reg: 43711600  
DOB: 03/19/2016  
Sire: R NEW YORK 5083

**APH**

**Aufdenberg Polled Herefords**

Darrell Aufdenberg  
Jackson, Missouri  
(573) 270-6755 cell  
aufdenbergd@yahoo.com

**Doss Hereford Farms**

Gary & Debbie Doss  
Smithville, Missouri  
(816) 699-8831 cell  
DHF6200@aol.com

	Calv. Ease Direct (%)	Birth Wt	Weaning Wt	Yearling Wt	Dry Matter Intake	Scrotal Circ.	Sustained Cow Fertility	Milk & Growth	Calv. Ease Mat. (%)	Mature Cow Weight	Udder Suspension	Teat Size	Carc. Wt	Fat	Rib Eye Area	Marbling	BMI Index (\$)	BII Index (\$)	CHB Index (\$)		
	EPD	Acc.	+7.2	+0.1	+76	+104	+0.9	+1.3	+18.0	+28	+66	+7.7	+125	+1.20	+89	-0.015	+0.47	+0.20	+\$ 394	+\$ 492	+\$ 117
			.37	.68	.56	.49	.17	.29	.10	.14	-.14	.26	.34	.32	.18	.21	.18	.18	-	-	-

THE EARLY POPULARITY OF THIS BULL AND HIS CALVES HAS RESULTED IN THE SALE OF SEMEN TO 24 DIFFERENT OPERATIONS IN 11 DIFFERENT STATES.

**\$25 PER UNIT /NON CERTIFICATE**

CONTACT US FOR DETAILS!



**NOW PROUDLY PRODUCING  
CERTIFIED HEREFORD BEEF**



**>>> CURRENTLY SEEKING <<<**

**HEREFORD AND HEREFORD INFLUENCED  
FEEDER CATTLE AND FAT CATTLE**

FOR MORE INFORMATION CONTACT JEFF GOODEN: 573.280.2351

**PROVEN GENETICS**  
WWW.WOESSNERFARMS.COM

**WF**

**WOESSNER FARMS**

11975 COUNTY ROAD 3450  
ST. JAMES, MO 65559

**Herd Sires**

WF 735 936 Limelight 4057  
WF 156T Maternal Bal Y1088A  
Innisfail Z311 13C

**A1 Sires**

Hyalite On Target 936  
C&L CT Federal 485T 6Y  
MSU TCF Revolution 4R  
Churchill Sure Bet 4185 B ET  
MHPH 521X Action 106A

**Bulls and Females for Sale at Private Treaty**

MIKE WOESSNER  
(573) 578-4050  
MIKE@INV-REL.COM



MATT WOESSNER  
(573) 308-7006  
MATT@INV-REL.COM



# JDB 719T K077 Bruno A008 ET

another Bellis example of

## "No Excuse Herefords"



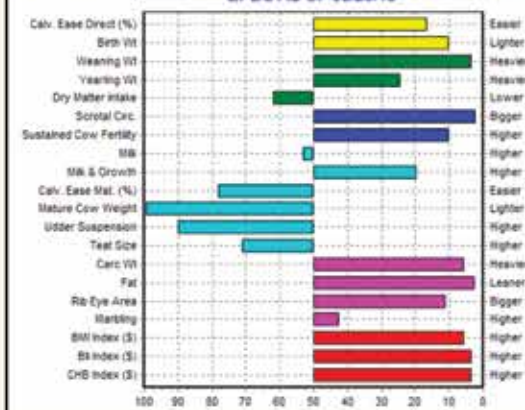
Progeny of A008



### JDB 719T K077 BRUNO A008 ET (P43423316)

DRF JWR PRINCE VICTOR 71I {CHB,SOD}  
TH 122 71I VICTOR 719T {CHB,DLF,HYF,IEF}  
KBCR 19D DOMINETTE 122 {DLF,IEF}  
RRH MR FELT 3008 {CHB,SOD,DLF,HYF,IEF}  
HUTH 2D PROSPECTA K077 {DLF,HYF,IEF}  
HUTH ENHANTRESS 51F

EPD Percentiles for JDB 719T K077 BRUNO A008 ET (DLF,HYF,IEF) (P43423316)  
EPDS AS OF 08/20/18



**Sons** are the first chosen by commercial cattlemen because of their eye appeal, moderate birth weights, and calving ease. Growth is in the top 5% of the breed with no apologies made when needing ease at calving AND superior performance.

His **CHB Index** will move most matings for that trait up to the top 20% of the breed making his sons eligible for Hereford Advantage Program. If all Hereford sires did that, the reputation of the breed would improve overnight.

His **Progeny** are short on white and dark chocolate in color. They are good dispositioned, sound on their feet, have extra depth of body, and are attractive made.

We are **Proud** of the acceptance of our first Bruno A008 progeny. One private treaty customer bought four sons at one time. **No Excuse Herefords!**



### Jim D. Bellis Family

Jim D. & Carla Bellis  
19264 Lawrence 2170 • Aurora, MO 65605  
Jim cell: 417-466-8679  
JimBellis@missouristate.edu  
Jonathan Bellis 417-440-1300  
Kevin, Jamie & Harper Johansen  
Kevin cell: 573-289-1061  
Joanna & Neal Wilkinson





**Lilac Hill**  
Polled Herefords



**KEN AND CAROL STATEN**  
163 HWY 5 • FAYETTE, MO 65248  
660.248.2764 • 660.728.2764 CELL

... Offering our **BEST** to you December 2, 2018 ...



**DFF 49X EMERALD 724** (REG: P43849880)

SIRE: LJR MSU MISSOULA 49X (Logic)  
DAM: DFF 2U TRINITY 037ET (Back N Time)  
*Halter Broke • Sells Open*



**DFF 1512 ELEGANCE 715** (REG: P43778419)


SIRE: RH DAYTON 1512 (MITT)  
DAM: DFF 1Y BRIANNE 407 (JUSTIN TIME)  
*AI Bred to FTF PRIME PRODUCT 226Z • Due Jan. 7, 2019*

**Missouri Opportunity Sale**  
December 2, 2018 • Sedalia, Missouri

**DAY'S  
FAMILY  
FARM**

**Larry & Pam Day**

Pilot Grove, MO  
660-834-4678  
ljd@iland.net

Find us on Facebook   
[www.daysfamilyfarm.com](http://www.daysfamilyfarm.com)

*Hereford Cattle Since 1962*



# Check these ladies out in the *Show-Me Polled Hereford Classic*

*November 17th, 2018*

Sale starts at Noon  
Roth Hereford Farm  
Windsor, MO



828F is a late March prospect sired by our Grieves bull, 408B, who is a son 0124. Sure cow prospect. Her dam, 319A, an own daughter of P606, also sells.



813F

Very nice, complete made February Box Top heifer. Broody and easy-fleshing. Dam is a deep-bodied, great uddered female.

...and be sure to look up Sierra in the

*December 2nd, 2018* **Missouri Opportunity Sale**

Sale starts at Noon  
MO State Fairgrounds, Sedalia

**PRF 4312 SIERRA 811F ET**

January born daughter of C Bailees Miles 4312 ET and out of About Time donor. This heifer may be our best prospect offered to date. She's already been in the purple, winning her division in the MO State Fair Open Show.

*Sire of 811F*



*Phillips-Renner Farms*



Amy Phillips

(816) 878-7305 - Nothead1@aol.com

37144 Brady Creek Road, Richmond, MO 64085

Herdsmen: Angela & Amanda Phillips - [www.prfherefords.com](http://www.prfherefords.com)

Also selling a 2 yr old fall pair and a Spring bred heifer. For more information on anything selling please contact us!



## Offering Elite Genetics - Missouri Opportunity Sale - Dec. 2, 2018



### WPH C776 DJ Homeward's Fancy F228 ET

Reg: P43953303 DOB: 2-28-18

- Top Prospect sired by KCF Bennett Homeward C776 and our donor cow LJR MSU Foxy Lady 227Z
- Conservatively marked show heifer prospect with a strong maternal foundation



### WPH 106A DJ Actionette 350E

Reg: P43863128 DOB: 3-5-17

- Sired by the acclaimed WHPH 521X Action 106A and our donor cow LJR MSU Foxy Lady 227Z
- Retaining 1/2 embryo interest
- Pasture exposed to our herd bull from Jim Bellis Herefords, JDB 100W 507P Trust C555 (P43775798), and safe in calf

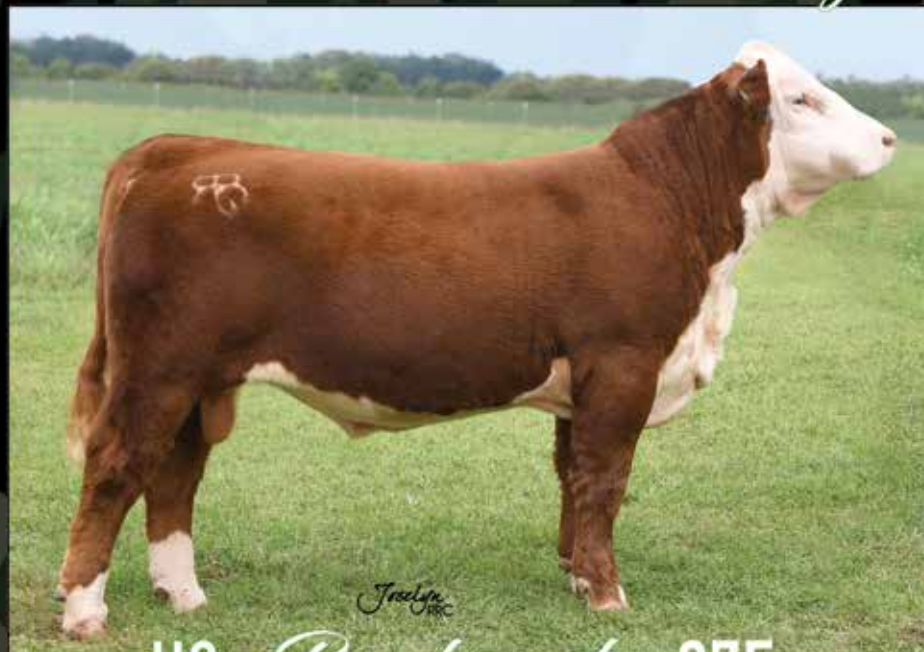
### Wirth Polled Herefords

Dirk, Jack and Ruth Wirth  
2575 CR 4990 Willow Springs, MO 65793  
Dirk 417-252-3989

*Looking forward to seeing you at the  
Missouri Opportunity Sale in Sedalia, MO!*

Whatever you're *hunting* for, the *Buckmaster*

will hit the **TARGET**  
every time!



### H2 *Buckmaster* 27E

Reg: 43936652 DOB: 09/22/2017 Sire: MPH 10H Juice Box Z3

**Sells December 2, 2018 • Missouri Opportunity Sale**



### Rapp Premium Genetics

Chris & Reba Rapp & family  
Rockville, MO  
660.679.1019 C  
417.684.2424 R  
rappreba@gmail.com

### H&H Herefords

Brad, Sherry & Justin Hurst  
Nevada, MO  
417.321.2350 B  
417.321.0423 S  
h2herefords4@gmail.com



# She Sells! Missouri Opportunity Sale – Dec. 2, 2018



## BB 0245 MISS BEEFY CASH 6100ET

Reg: 43695769 | DOB: 02/06/2016 | Sire: DKF RO CASH FLOW 0245 ET

Sells with a heifer calf born 9-17-18 by MCR Flint Hills 10Y 5100 ET

---

---

**Thank you to all the bidders and buyers  
from our Fall 2018 Female Production Sale!  
We appreciate your support and your friendship!**

---

---

# BONEBRAKE

REGISTERED

# HEREFORDS

EST.1936

*M.D. and Al Bonebrake*

5943 E St. Hwy. YY Springfield, MO 65802

*Dr. Al Bonebrake* 417-849-1324

*James Henderson, Herdsman*

417-588-4572 cell

jameswhend@gmail.com





# Maternal Opportunity Awaits...

**LJR MSU MAGGIE 105D REG #43704718**  
**LJR MSU Cold Fusion X Remitall Route 66**

105D IS A COMING 3 YR OLD WITH 100% PIGMENT,  
EASY FLESHING, VERY ATTRACTIVE, AND SUPER UDDERED WITH TINY TEATS.  
THIS IS ONE BEAUTIFUL COW WHEN SHE CALVES IN!!

**Her January Tested X651 heifer calf sells also!**

**SELLING DEC 2, 2018**  
**MO OPPORTUNITY SALE**  
**SEDALIA, MO**



**Travis & Sarah McConnaughey**  
Wasola, MO

Phone: 417.989.0486

Email: [t-mc2009@live.com](mailto:t-mc2009@live.com)

[www.wmccattleco.com](http://www.wmccattleco.com)

**SAVE THE DATE**

*Ladies*  
**OF THE**  
*Ozarks*

**MAY 18, 2019**

**AT THE RANCH, WASOLA, MO**



# MILLER HEREFORDS

MH GOLDEN RULE 8103 ET

P43949759

## SOLD



## SOLD

Thank you to Jim Alexander and family  
from Kokomo, IN for the purchase of  
Golden Rule

Check out our website  
for top-end heifers for sale.  
Private Treaty!

Rusty & Marijane Miller & Family  
Lebanon, Missouri  
Rusty Cell 317-840-7811  
Marijane Cell 317-341-3846  
millerherefords@yahoo.com  
www.millerherefords.com



# His Will, His Way, Our Faith



# Sale Results

## Sale Index

- Central Missouri Polled Hereford Breeders Sale
- Hereford Fall Classic Sale
- Journagan Ranch Missouri State University Genetically Yours Sale

## Central Missouri Polled Hereford Breeders Sale

Vienna, Mo. | Sept 15  
Auctioneer: Jack Lowderman  
Reported by: Frank Flashpohler

Lots	Gross
9 bulls	\$17,300
47 females	\$62,850
1 comm. females	\$725
48 total	\$80,875

### TOP BULL LOTS

\$2800— DFF 2U Chelsea 528  
DOB 9/8/15, by LCC Back N Time ET, sold to Little Boone Creek Farms, Sullivan, MO.

### TOP FEMALE LOTS

\$2600— GPHF Everett 59A 707E  
DOB 2/9/17, by BKR Austin 84X1 59A, sold to Sue's Cattle Farm, California, MO.

\$2400— WHF Miss Royal 53C  
DOB 3/12/17, by PW Victor Boomer P606, sold to KK Polled Herefords, Tipton, MO.

## Hereford Fall Classic Sale

Taylorville, MO. | Sept 8  
Auctioneer: Joe Goggins  
Reported by: Kayla Anderson

Lots	Gross	Average
5 bulls	\$15,400	\$3080
58 females	\$162,800	\$2807
1 Flush	\$11,500	\$11,500
1 Pregnancy	\$5100	\$5100
65 total	\$194,800	\$2997

### TOP FEMALE LOTS

\$11,500— CL 1 Dominette 3175A (Flush)  
DOB 2/15/13, by CL 1 Domino 1161Y, sold to Cooper Hereford Ranch, Willow Creek, MT.

\$8,000— BAR S LHF BLC MISS 028 887  
DOB 1/22/18, by Churchill Sensation 028X, sold to Gillespie Herefords, Oxford, OH.

\$5900— BAR S MISS 240 728  
DOB 1/5/17, by BaAR S LHF 028 240, sold to Roger Jennings, Palmrya, IL.

\$5800— Crane Miss Crossette 1810  
DOB 1/15/18, by ECR RO Rushmore 418 ET, sold to Charles Holloway, Centerville, TX.

## Journagan Ranch Missouri State University Genetically Yours Sale

Springfield, MO. | Oct 6  
Auctioneer: Eddie Burks  
Reported by: Jim Reed, Midwest Cattle Service

Lots	Gross	Average
24 bulls	\$77,400	\$3225
57 females	\$173,500	\$3044
81 total	\$250,900	\$3098

### TOP BULL LOTS

\$6600— LJR MSU B76 EXCURSION 173E  
DOB 2/19/17, by WSF Home Schooled B76 ET, sold to JRC Farms, Mercer, MO

### TOP FEMALE LOTS

\$6500— LJR MSU WHITNEY 110A  
DOB 2/3/13, by LJR 023R Whitemore 10W, sold to Steinbeck Farms, Hermann, MO & Falling Timber Farm, Marthasville, MO. and heifer calf LJR MSU ELSA 82F DOB 2/22/2018, sold to Parker Bros, Bradyville, TN.

\$6300— LJR MSU WHITNEY 25C  
DOB 2/10/15, by LJR 023R Whitemore 10W, sold to Menzies Cattle, Marshfield, MO and heifer calf LJR MSU Maxy 65F DOB 2/17/2018, sold to Reagan Sneed, Houstonia, MO.

Maternal Cow Power Selling • Dec 2, 2018 • Sedalia, MO • Missouri Opportunity Sale



**MMM ELSA E01 • Reg # 43782425**  
• Hometown 10Y out of a Logic Daughter  
• Bred to FTF Prime Product 226Z



**MMM BELLE E02 • Reg # 43782412**  
• Homegrown 8Y out of a Journagan bred Frontier daughter  
• Bred to FTF Prime Product 226Z

**McCORKILL**  
**FAMILY FARMS**

Registered Herefords

Mike and Myra McCorkill  
152 E Dade 92 • Greenfield, MO 65661  
417-637-5228 417-838-2073

Andy, Jenn & Molly McCorkill  
417-838-0583

Brant, Erin, Knox & Briggs Harvey  
417-214-0313



A legacy of *Proven Genetics* that have  
produced year after year sell **THIS FALL!**

# SHOW-ME POLLED HEREFORD CLASSIC

November 17th, 2018 • Noon • Roth Hereford Farm • Windsor, MO



**Glengrove Butterfly 56B ET • Reg: P43617891**  
Sire: TH 122 711 VICTOR 719T  
Sells with a 8-30-18 Small Town Kid heifer calf



**Glengrove Party Time B23 • Reg: P43536542**  
Sire: H H PERFECT TIMING 0150 E  
Sells with a 9-1-18 Small Town Kid heifer calf



**Midwest Cattle Service, Inc.**

For more information, contact:  
Jim and Linda Reed • P.O. Box 126  
Green Ridge, MO 65332  
660-527-3507 • Fax 660-527-3379  
reedent@iland.net • www.reedent.com



**Glengrove Bridget B37 • Reg: P43536491**  
Sire: CMF CS U408 PROGRESSION Y449  
Sells with a 9-12-18 Maternal Force heifer calf



**Glengrove 001A Connie C18 • Reg: P43637392**  
Sire: GERBER ANODYNE 001A  
Pasture exposed to APH GF 719T Bart - will calve this fall



**LJR MSU Willow 155A • Reg: P43383333**  
Sire: C&L CT FEDERAL 485T 6Y  
Sells with a March heifer calf sired by Maternal Force



**WALKER MISS 162 175 636D • Reg: P43688031**  
Sire: WALKER WHITEHAWK 7115 2328 162  
Sells with a March bull calf sired by Leader



**WALKER RACHEL X51 80Z 664D • Reg: P43688139**  
Sire: KCF BENNETT REVOLUTION X51  
Sells with an April bull calf sired by Cadence



**Glengrove 74Y Cherry C5 • Reg: P43628858**  
Sire: REMITALL-WEST GAME DAY ET 74Y  
Sells with a March heifer calf sired by Maternal Force

## COMPLETE MATURE COWHERD DISPERSION OF GLENGROVE FARM



Bob and Gretchen Thompson  
12905 C.R. 4010 • Rolla, MO 65401  
Home 573-341-3820 Cell 573-368-9557  
www.glengrovefarms.com

Our entire herd of mature cows, ages two (2) through nine (9), along with their spring and fall 2018 calves will sell at the Show-Me Polled Hereford Classic on Saturday, November 17, in Windsor. Over the past two years we have reduced our mature cow numbers from more than 60 down to about 30. In March I suffered a stroke making it difficult to manage the herd as I would want. Our cows selling in the Show-Me Classic are, in our opinion, the very best we can offer to you.

We will also be selling seven outstanding bred heifers and two fancy open show heifers at the Missouri Opportunity Sale in Sedalia on December 2, 2018. The bred heifers (sired by Red Power, Out Front Y4, Frontier, and Overtime) will all calve in the Spring, 2019. They are bred to Glengrove 106A Elite E1, our Action son. One of the show heifers is sired by CRR 719 Catapult 109 and has an outstanding Monty dam. The other show heifer is sired by LJR MSU GF Cold Fusion and has a Revolution 4R dam.

In addition, we have several herd bull and herd sire prospects available by private treaty or at the Show-Me Classic Bull Sale in Windsor in April, 2019. Their sires include: Box Top, Perfect Timing, Catapult, Prime Product, Cold Fusion, UPS Sensation, and Prospector 145Y and Action.



## Membership Update

### CAFNR Recognizes Six Alumni with the College's Highest Honor

CAFNR recently honored its inaugural class of recipients of the CAFNR Column Award for Distinguished Alumni. This is the only award specifically for alumni presented by the College of Agriculture, Food and Natural Resources. The awardees include one graduate from each of CAFNR's six divisions, reflecting the six historic columns at the University of Missouri.

"We are proud to recognize these six esteemed graduates of our college. This is the highest honor from CAFNR for alumni," said CAFNR Vice Chancellor and Dean Christopher R. Daubert. "There are many different awards given out by college campuses. This one is very special, as it is recognition given directly from the college and its divisions for exemplary achievement."

Robert "Bob" Thompson had a 37-year career in local banking, including 25 years as the president and CEO of the U.S. Bank in Rolla, Missouri, retiring in 2001. Since retiring he has served as CFO of Missouri Enterprise, a not-for-profit helping Missouri businesses succeed, and on the board of directors for the Central Federal Savings and Loan in Rolla. He has served as president of the Missouri State Fair Foundation.

Bob is a third-generation Missouri farmer. He and his wife, Gretchen, run Glengrove Farm outside of Rolla – a Century Farm. They inherited his parents' award-winning Jersey dairy and poultry operation in 1973, and have since built it into a nationally recognized breeding program for Hereford cattle. Thompsons' parents joined MU Extension's Balanced Farming program in 1942 and were early adopters of artificial insemination to improve their herd. They passed their appreciation for MU and Extension on to their son. Bob began performance testing through Extension in 1975 to ensure the quality of their bulls, and continues to use MU testing services

to maintain the strength of their herd. He is also co-owner of Agventure, Inc. and Pietsch and Thompson, LLC, a row-cropping operation in Princeton, Missouri.

Glengrove Farm received the Missouri Hereford Association Purebred Breeder of the Year award in 2012; the same year, Bob was recognized with the Governor's Award for Agricultural Achievement. He is past president and a Hall of Fame inductee of the Missouri Hereford Association.

"Mr. Thompson exemplifies a CAFNR alumnus whose contributions to his industry are a testament to the education he received at MU, and whose service to Missouri benefits people across the state," said Joe Parcell, director of the Division of Applied Social Sciences, in his nomination letter. "Throughout his career he stayed connected to his alma mater, working with faculty and staff in the Agricultural Economics department (later Agricultural and Applied Economics, now the Division of Applied Social Sciences), serving on the Agricultural and Applied Economics advisory board, and on MU's Ag Alumni Association board of directors. In retirement he continues to give back to CAFNR as a board member of the CAFNR Foundation as well as serving on CAFNR's committee for the 'Mizzou: Our Time to Lead' fundraising campaign.

"Bob is passionate about the future of farming in Missouri. He and Gretchen donate their time, money and even use of their pastures to youth programs such as the National Junior Hereford Association, the Hereford Youth Foundation, 4-H and the Future Farmers of America. Bob and Gretchen have provided generously for CAFNR student research scholarships, believing that youth who are involved in value-added agriculture programs have a leg up when they go out into the real world.

"Bob Thompson is an alumnus of whom CAFNR can be proud, making the best use of his agricultural education to benefit his community, contribute to his industry and invest in the future of farming in Missouri," Parcell said.

*Written by Michelle Enger*

### Certified Hereford Beef Modifies Program Marbling Score Specification

The Certified Hereford Beef and the American Hereford Association (AHA) Board of Directors voted unanimously to modify the minimum marbling score requirement of the current Schedule G-10 for the Certified Hereford Beef brand.

The minimum marbling score requirement will be modified from a Slight<sup>00</sup> marbling score to a Small<sup>00</sup> marbling score to elevate the quality level of the Certified Hereford Beef brand to a USDA Choice quality grade.

"Our Hereford farmers and ranchers have worked diligently over the years to improve

the Hereford breed," says Amari Seiferman, Certified Hereford Beef chief operating officer. "This modification is a testament to their work and proves Certified Hereford Beef is a premium quality product. We are proud to move our brand forward into a new era of success."

The marbling score modification will go into effect on Jan. 1, 2019. The Certified Hereford Beef brand will serve customers with two flagship programs – Choice and Premium. The Choice program will provide an upper-two-thirds USDA Choice and higher product.



Bob Thompson, center, receives the CAFNR Column Award for Distinguished Alumni.

CAFNR recently honored its inaugural class of recipients of the CAFNR Column Award for Distinguished Alumni. This is the only award specifically for alumni presented by the College of Agriculture, Food and Natural Resources. The awardees include one graduate from each of CAFNR's six divisions, reflecting the six historic columns at the University of Missouri. Photos by Shane Epping | © 2018 - Curators of the University of Missouri



From left to right: Ed Anderson, Wamwari Waichungo, Everett Forkner, Bob Thompson, Dan Dey and Jerry Hazelbauer, who accepted on behalf of Lowell Miller.



### Birth Announcement

Missouri Hereford breeders Rick and Laurie Steinbeck would like to announce the birth of their first grandchild, Everett John Steinbeck born September 24, 2018. Everett and his parents Eli and Erika Steinbeck reside in Edmond, Okla. Everett weighed in at 10 lbs. 1 oz., almost big enough for farm help.



Please make plans to join us for the

# Show-Me Polled Hereford Classic

Saturday, November 17th, 2018



8001F - Offering our first daughter of Rampage & her 2 yr old Revolution dam, 6012D



4084B - Powerful 58X daughter out of our W9110 Donor, sells w/stout September 27A Heifer calf



Sale starts at Noon  
Held at Roth Hereford Farm  
Windsor, MO

## ROTH HEREFORD FARM

1146 NE Hwy J, Windsor, MO 65360

Ed & Carol Roth

(660) 351-4127

croth745@earthlink.net

Amy Phillips (816) 878-7305

Eddie, Mary,

Lane, & Levi Roth

(660) 351-4126



Offering two HIGH QUALITY heifers in the  
**Missouri Opportunity Sale**  
December 2, 2018 • Sedalia, MO

## BF TM HOMETOWN LUCY 8038

Reg: 43955406 DOB: 1-7-18 Horned

Sire: BF AM 016 10Y HOSMER 427B ET

## BELZER FARMS

Browning, MO

April Miller • 816-305-7490

aprilmiller1732@gmail.com



## BF AM CHAC MIRANDA 7425

Reg: P43955407 DOB: 12-8-17 Polled

Sire: CHAC MASON 2214



## Maternal Integrity Selling Dec. 2, 2018 • MO Opportunity Sale



**MHF 1455 EUNICE 1740E** Reg: P43806443  
Sire: MHF 10Y BAZYLI 1455B

Reserve Junior Division Champion at the Ozark Empire Fair  
Dam is an own daughter of BT CL Domino 15G  
Bred to HPF Perfect Timing 404



**TAR X06 Miss Heart 4E** Reg: P43798731  
Sire: LSW WCC ABOUT TIME X06

Red necked, smooth made with beautiful udder development  
Dam is maternal sister to Mariah and Pure Country  
Bred to HPF Perfect Timing 404

Also selling - MHF 23B Elva 1719E (P43810033) - dark red canadian bred heifer safe to 33Z - owned with Malone Herefords, KS

## McMillen's Toothacre Ranch

Trent & Mary McMillen Family • Walnut Grove, MO  
[5inthehive@gmail.com](mailto:5inthehive@gmail.com) 417-830-7257 cell



## HATCHEE CREEK FARM

Registered Polled Herefords  
Garry and Sundra Mistler 573-859-6631  
34963 Maries Rd. 311 Belle, MO 65013

## HCF GM 10Y Flint E10

Reg: P43783513 DOB: 4-10-17



Sire: NJW 135U 10Y Hometown 63A ET

GE-EPD, DLF, HYF, IEF

Homozygous Polled

Actual BW: 72 lbs

WW: 892 YW: 1340

Actual Wt: 1740 (as of Sept 5)

*Dark Red, Freckled Faced  
Semen Tested*

Supreme Champion Bull  
2018 Belle Fair

**Sells Dec. 2, 2018**  
**Missouri Opportunity Sale**  
**Sedalia, MO**



OUR TRADITION CONTINUES

# CENTRAL MISSOURI POLLED HEREFORD BREEDERS ASSOCIATION

HAS PARTNERED WITH THE

## COLLEGE OF THE OZARKS

Sixty-Eight years ago, the Central Missouri Polled Hereford Breeders Association was created with the mission to exchange ideas, educate breeders and promote the Hereford breed. One hundred twelve sales later, we are excited to announce that we have partnered with the College of the Ozarks to continue that tradition.

Our One Hundred Thirteenth Sale (March 2019) will be held at the South Central Regional Stockyards in Vienna, Missouri, followed by our One Hundred Fourteenth Sale (November 2019) at the College of the Ozarks in Point Lookout, Missouri.

For a Sale Catalog, please contact  
Frank Flaspohler, Sale Manager - [fwf@rocking.com](mailto:fwf@rocking.com)  
[www.missourihereford.com](http://www.missourihereford.com)



### UPCOMING SALES

**March 9, 2019**

South Central Regional Stockyards  
Vienna, Missouri

**November 30, 2019**

College of the Ozarks  
Point Lookout, Missouri



# Hands-On Education *Working Hard*

When learning and passion meet, it creates a dominant effect full of endless possibilities. At the College of the Ozarks (C of O), students are driven by seeing results through their work stations, a unique concept only seven other colleges across the United States share.

Beautifully located in Point Lookout, Mo., the Work Hard U<sup>®</sup> motto is evident across the campus but specifically in the agricultural studies, students are found working on the beef, dairy and swine farms. With more than 60 different positions at the agricultural workstations ranging from greenhouses, a feed mill, meat processing plant and more, the opportunities are limitless for students to learn what career they will love before the ninth hour of their degree program.

So, how exactly does it work?

Students do not pay tuition.

That's right, C of O is a tuition free school. Instead, students work 15 hours per week on campus and must maintain two 40-hour work

weeks per year during school breaks. This pays student tuition, about 40% of what it would cost them if they were just paying out of pocket. An endowment covers the rest.

"If it wasn't for my students, there is no way I could run the farm by myself," said Tammy Holder, Assistant Professor of Agriculture & Beef Farm Manager.

Tammy is responsible for the beef farm at the college where her and the students run primarily Herefords.

C of O hosts a production sale bi-annual with proceeds going back into the college's operating fund.

"It can be challenging," said Tammy. "Because we are selling good genetics often, it really cuts into our herd, making it more difficult to build in numbers and quality."

C of O sells 80-90 Hereford cattle in their sale. The school is always looking for Hereford embryos, as they have an embryologist on staff, making their input

costs more affordable for embryo transplant. Breeders in the past have made donations, and it is very much appreciated.

"We are always looking to improve our herd quickly," said Tammy. "Embryo transplant is the way for us to grow our quality numbers."

At the C of O we strive to link the classroom to the workstation, making the workstation an extension of the laboratory classes. With 20 different animal science classes, the professors incorporate hands-on teaching at a number of different facilities on campus including the animal science lab, processing plant and hayfield, to name a few.

The college beef farm is also welcoming some exciting new editions that will enhance learning and improve the herd. The beef farm was the recipient of the College of the Ozarks Associates' grant this year and has used the money to purchase a SmartFeed individual intake system, designed to measure total daily feed intake from individual large animals. With the new intake system, students and professors will be able to measure individual dry matter intake of their bulls on test. The SmartFeeder uses a scale







system and RFID ear tag to log the amount of feed consumed by each animal and the amount of time spent eating each day. With this information, animals can be compared based on the ratio of feed consumed and weight gained to select for and propagate animals with true dry matter intake efficiency. Simply put, the most efficient gainers will easily be found.

Within the next semester, the beef farm will also house a fistulated cow, Marty, as she has been affectionately named by the beef

farm students. Marty is a freemartin heifer, born on the C of O beef farm in the spring of 2017. By fistulating Marty, she will play a major role in animal science and forage labs alike, enabling access to rumen fluid and the generation of feed digestion analysis.

"I am very excited about a machine to do rumination samples, said Wyatt Eaton, a pre-vet animal science senior. "By taking samples in a jar, controlling the temperature and carbon dioxide, we can do nutrient feed samples for our herd. We are always trying to improve the nutrients for the different aspects of our herd, so we can try different feed and composers to help them grow faster, maintain, increase milk production, give cows energy at birth,

The herd of Hereford cattle of College of the Ozarks hosts a bi-annual production sale managed by the Livestock Merchandising Class. Animals are bred and selected for cattle that exhibit fertility, longevity, fleshing ability and excellent carcass traits.

proper nutrients while lactating, and so forth, for every piece of the production chain."

Show feed is also important to the students, with their own show herd exhibiting at the Missouri State Fair. Students like Wyatt understand the importance of balancing not feeding too much to effect a heifer's future, but allowing her to have the bloom to compete in the show ring. The students will be able to study what is being digested by the show animals and not desecrated out, providing little nutrients.

Dr. Kevin Sargent is an Assistant Professor of Agriculture at C of O and brings a strong background in reproductive physiology to his classroom teachings. The college relies heavily on donors and grants to secure items needed for the classroom and research projects. Kevin has been responsible for writing Capital Request grants for genomic research, something he is very excited for his students to learn.

"Beginning this semester, students enrolled in genetics courses will learn to extract DNA and proteins from various types of plant and animal tissues and to separate and purify the extracts using a gel electrophoresis technique," said Sargent. "The nutrition courses will utilize a new incubator to assess the digestibility of feeds by immersing samples in rumen fluid from our own cattle."

The research aspect excites students like Wyatt. While C of O students can currently look at the phenotype of an animal, they have to send any DNA data off to be read elsewhere. Soon though, with the upgrades of equipment, genetic information will be able to be read on animals, helping locate specific genes and looking at the sequences in person. Granted, the genetics take a long time to change, but seeing how the genetics work would play a role in the school's selection of Hereford genetics positively influencing their herd the most.

Sargent has played in intricate part in helping revamp the animal science program at the C of O. Most classes had been the same since the 80's, so new technologies and trends in the industry are being incorporated in the classroom. Because the college has no lab fees, the budget is very small, and so farm

*Left: The college is always looking for new ways to increase feed efficiency for lactating cows, bulls on test, growing calves, and more. The research plays a key role in the production of their own cattle but also serves as information to share with others.*

*Right: The College of the Ozarks practices a lot of hands-on teachings, although, time is still spent within the classroom. Conferences are also held on campus including last year's Missouri Hereford Field Day.*

money allocations are also used towards teaching, spreading funds thinly.

The main way students fund education is through donations. There are 60 students studying animal science at the four year school. With a heavy production influence, the animal science department no longer teaches with just theory, but classes are extremely hands-on, and continuing to expand this concept even greater.

"To me, working for my college has kind of made it more important to me," said Wyatt. "It's something I've worked towards to earn. I hold this knowledge to a higher regard, as I'm applying what I see, helping me towards my dream of becoming a veterinarian. I get to work with everything at the farm and love to be out here doing that."

Wyatt has worked on the farm for 2.5 years, developing a connection with the animals. He says the best part of his day is getting to come out to the farm and work with the Hereford cattle.

As a predominately Hereford herd, the students enjoy working with the docility the breed is so well known for. Students who haven't been around cattle have the opportunity to safely learn and have the experience through active participation in all facets of producing them.

# STRONG

## Cattlemen

51st Cattle Industry Convention  
& Trade Show

### January 4-6, 2019

Holiday Inn Executive Center - Columbia, Mo



# SOUTHEAST MISSOURI DISTRICT FAIR

Junior Show - Sept. 12, 2018 | Open Show - Sept. 13, 2018 | Judge: Bruce Keiswetter, Iowa | Cape Girardeau, MO



**Junior Grand Champion Heifer**  
**APH 53B RUBY 13F**  
 DOB: 3/2/2018 : Sire - APH GF 719T BART 53B ET  
 Wyatt Russell, Jackson, MO



**Open Grand Champion Heifer**  
**CB MISS SUSIE 721**  
 DOB: 12/15/2017 : Sire - MOHICAN BAR STAR REVVED UP 78A  
 Campbell Belcher, Anna, IL



**Junior Grand Champion Bull**  
**Crut Gilligan L27E**  
 DOB: 12/27/2017 : Sire - CRUT LADY'S RASCAL 127C  
 Morgan Crutsinger - Whitewater, MO



**Open Supreme Champion and Grand Champion Bull**  
**C&L RR KJ 364C JALAPENO 973E**  
 DOB: 4/12/2017 : Sire - R LEADER 6964  
 Reed Farms - Green Ridge, Mo, Kevin Jensen - Courtland, KS, MSU Journagan Ranch  
 - Springfield, MO, Reynolds Herefords - Huntsville, MO



**Junior Grand Champion Cow-Calf**  
**Abra 32A Celeste 45C**  
 DOB: 5/4/2015 : Sire - ABRA 88X VISION 32A  
 Morgan and Lauren Crutsinger - Whitewater, MO



**Open Grand Champion Cow-Calf**  
**Sull Harley 6361D ET**  
 DOB: 2/21/2016 : Sire - C MILES MCKEE 2103 ET  
 Cassie and Krista Allscheid, Waterloo, IL



# MULTIMIN® 90

An injectable aqueous supplemental source  
of zinc, manganese, selenium and copper

KEEP OUT OF REACH OF CHILDREN

**CAUTION:** FEDERAL LAW RESTRICTS THIS DRUG TO USE BY OR ON THE ORDER  
OF A LICENSED VETERINARIAN.

**ACTIVE SUBSTANCES PER ML:**

Zinc	60 mg/mL
Manganese	10 mg/mL
Selenium	5 mg/mL
Copper	15 mg/mL

**OTHER SUBSTANCES:**

Chlorocresol 0.1% w/v (as preservative).

**DOSAGE RECOMMENDATIONS:**

CALVES: Up to 1 year	1 mL/per 100 lbs. bodyweight
CATTLE: From 1-2 years	1 mL/per 150 lbs. bodyweight
CATTLE: Over 2 years	1 mL/per 200 lbs. bodyweight

**PRECAUTION:**

Selenium and copper are toxic if administered in excess.

Always follow recommended label dose.

Do not overdose.

It is recommended that accurate body weight is determined  
prior to treatment.

Do not use concurrently with other injectable selenium and  
copper products.

Do not use concurrently with selenium or copper boluses.

Do not use in emaciated cattle with a BCS of 1 in dairy or 1-3 in beef.

Consult your veterinarian.

**CAUTION:**

Slight local reaction may occur for about 30 seconds after injection. A  
slight swelling may be observed at injection site for a few days after  
administration. Use standard aseptic procedures during administration of  
injections to reduce the risk of injection site abscesses or lesions.

**DIRECTIONS:**

This product is only for use in cattle.

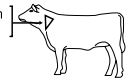
MULTIMIN® 90 is to be given subcutaneously (under the skin) ONLY.

It is recommended to administer the product in accordance with Beef  
Quality Assurance (BQA) guidelines. Minimum distance between injection  
sites for the MULTIMIN® 90 product and other injection sites should be  
at least 4 inches.

Inject under the loose skin of the middle of the side of the neck. Max  
volume per injection site is 7 mL.

Subcutaneous injection in  
middle of side of neck.

Store Between 15°C and  
30°C (59°F and 86°F).



**SUPPLEMENTATION PROGRAM**

BULLS	3 times per year
BEEF COWS	4 weeks before breeding 4 weeks before calving
DAIRY COWS	4 weeks before calving 4 weeks before insemination at dry-off
CALVES	at birth at 3 months and/or weaning
HEIFERS	every 3 months – especially 4 weeks before breeding

(program gives planned dates that can be varied to suit management programs)

**DOSAGE TABLE**

ANIMAL WEIGHT (lbs)	CALVES UP TO 1 YEAR 1 ml/100 lb BW	CATTLE 1 - 2 YEARS 1 ml/150 lb BW	CATTLE > 2 YEARS 1 ml/200 lb BW
50	0.5 ml	-	-
100	1 ml	-	-
150	1.5 ml	-	-
200	2 ml	-	-
300	3 ml	-	-
400	4 ml	-	-
500	5 ml	-	-
600	6 ml	-	-
700	7 ml	-	-
800	-	5.3 ml	-
900	-	6 ml	-
1000	-	6.6 ml	5 ml
1100	-	-	5.5 ml
1200	-	-	6 ml
1300	-	-	6.5 ml
1400	-	-	7 ml

Packaged in 100 mL & 500 mL size

NDC No. 49920-006-01 NDC No. 49920-006-05

TAKE TIME  OBSERVE LABEL  
DIRECTIONS



MANUFACTURED FOR:  
**MULTIMIN**  
NORTH AMERICA, INC.  
Fort Collins, CO 80528



## MULTIMIN® 90 IS A PRODUCT YOU CAN USE TO GET THE ULTIMATE PERFORMANCE OUT OF CATTLE.

Around 90-95% of our calves are  
either AI or ET. Since we started  
using **MULTIMIN® 90** we're  
up around 70-75% conception on  
our first AI service. Our baby calves  
get **MULTIMIN® 90** at birth  
and again at branding. We feel that  
**MULTIMIN® 90** helps increase  
their immunity and improves  
the vaccination response. With  
**MULTIMIN® 90** we just aren't  
treating for sickness.

**Guy & Kyle Colyer**

Colyer Hereford & Angus | Bruneau, ID



R<sub>x</sub> REQUIRED



Sure Trace Mineral Supply by Timed Injection

**WWW.MULTIMINUSA.COM**

1.866.269.6467 | 1.970.372.2302

Copyright © 2016, MULTIMIN USA, Inc. All Rights Reserved. A201704-07



Youngsters these days are getting into more trouble, making more mischief, and creating more headaches for me than any time in the past thirty years—and I have proof.



**Jerry Crownover**

We have lived in the same home for the past thirty years. Our house sits in the very middle of an eighty-acre cow pasture, which necessitated the installment of concrete cattle guards at both the entrance to our driveway and another set at the entrance to our yard. In those thirty years, the only times (maybe a half-dozen) that mature cows or bulls ever crossed over the structures were when it was covered with deep snow and, until about three years ago, it was a rarity when young calves would cross over the guard into our yard, or out onto the lightly traveled county road by our house.

When those first calves caused trouble three years ago, I solved the problem by gently coaxing them back over the same cattle guard they had jumped to escape, and then unleash the fury (maybe that's a bit strong) of our trusted cow dog, Bernie, who would gleefully chase them, until she became bored...usually about a hundred feet. But that seemed to work—for that year.

The next summer, two calves kept getting out on the road and grazing the right-of-way every afternoon and no amount of dog chasing would teach these young hoodlums respect for boundaries. Eventually, to the chagrin of my wife, I hung a wire cattle panel across the length of the cattle guard, secured by two strands of baling twine. Judy was livid that I had "uglied up" the entrance to her home and I'm pretty sure she cursed me every time she had to get out of her car to open and close the flimsy panel.

Last year, when three of the little trouble-makers could not be taught to stay at home and Judy nixed the idea of another cattle panel, I even went to the trouble of capturing those calves and their mothers and swapping them with three other well-behaved pairs from another pasture. It was a lot of trouble to do that, but I calculated that it was cheaper than a divorce. This year, however, was the worst.

Starting in April, at least a dozen calves in this pasture began by jumping the cattle guard at our yard fence. If they had just come in to graze the lawn and deposit some organic fertilizer, I might have been able to overlook their misdeeds, but they felt the need to make enough laps around the chicken house to wear a path and then run through the wife's garden like a 60's style protest march. Even more calves joined the nightly assault on the county road, to the point that the right-of-way was grazed shorter than my pasture and I got on a first name basis with the deputy sheriff. Finally, I had to install gates at both guards—nice gates...with hinges...and latches...and cost money.

I sold that group of calves today and I won't miss them. I don't know if their behavior was due to a vegetarian diet, the use of drugs, lack of supervision by their parents, or the simple breakdown of societal cow norms, but I'm hoping that next year's generation stays at home, and out of the yard.

## REED FARMS

Registered Polled  
Herefords  
Since 1962

### BRED HEIFERS FOR SALE

First time ever offered. The following heifers are an outstanding group consisting of three daughters of EFBeef U208 Sure Bet Z002 and one C&L CT Federal 485T 6Y.

**RF Z002 Betty 84D--P43689410**  
Sire: EFBeef U208 Sure Bet Z002  
SOD: RF 73C Genetic Blend 39M  
Bred to KJ C&L J119 LOGIC 023C  
4-8-18. Homozygous Polled

**BKR Daisy Z002 97D--P43770219**  
Sire: EFBeef U208 Sure Bet Z002  
SOD: HRP THM victor 109W 9329  
Bred to KJ C&L J119 LOGIC 023C  
3-27-18. Homozygous Polled

**RF Z002 Betty 94D--P43680265**  
Sire: EFBeef U208 Sure Bet Z002  
SOD: TRM 37E 121 King 3238  
Bred to KJ C&L J119 Logic 023R  
3-22-18 Homozygous Polled

**CSR 285W Ms Federal 76D--P43689404**  
Sire: C&L CT Federal 485T 6Y  
SOD: LJR 872G Nemesis 57N  
Bred to MPH 10H Splash B12  
4-25-18 Homozygous Polled

All are Homozygous Polled out of Homozygous Polled Bulls

#### Contact

Reed Farms, Jim Reed  
PO Box 126 • Green Ridge, Mo 65332  
660-527-3507 or 417-860-3102

## G H R

GREGORY  
HEREFORD  
RANCH

Michael, Amy Hanna,  
Emily & Sutton Gregory  
10851 Range Line Rd.  
Houstonia, MO 65333  
660-287-1616

Robert & Sharon Gregory  
12389 Chamberlin Rd.  
Houstonia, MO 65333  
660-620-4020



Two-year-old bulls  
for sale

**Herd Sires:** SRF City Limits ET, Churchill About Time 0223X,  
LJR MSU 317X Zacherie 216Z, MCG Churchill Time 324A  
**Cow Herd:** Trust, Hometown, Kilo, Radar, Logic, Bright Future  
**AI Sires:** Twentytwelve, Trust, Hometown





# Wall Art

Our custom photo shoots include stunning framing and canvas art, the perfect keepsake in any home.



[www.ruralroutecreations.com](http://www.ruralroutecreations.com)

Rural  
Route  
CREATIONS  
PHOTOGRAPHY



## Events & Deadlines

### OCTOBER

- OCT 26** American Hereford Association  
Annual Meeting  
Kansas City, Missouri
- OCT 27** Ladies of the Royal Hereford Sale  
Kansas City, Missouri
- OCT 27** American Royal Junior Show  
Kansas City, Missouri
- OCT 27** Mead Farms Fall Bull Sale  
Versailles, MO
- OCT 28** American Royal National  
Hereford Show  
Kansas City, Missouri

### NOVEMBER

- NOV 1** Missouri Hereford Queen  
Application Deadline
- NOV 1** MHA 2018 awards nomination  
deadline
- NOV 10** North American Int'l Livestock Expo  
Hereford Junior Show  
Louisville, Kentucky
- NOV 13** North American Int'l Livestock Expo  
Hereford Open Show  
Louisville, Kentucky
- NOV 14** Missouri Hereford Influenced  
Feeder Calf Sale  
Vienna, Missouri
- NOV 17** Show-Me Polled Hereford Classic  
Windsor, Missouri

### DECEMBER

- DEC 1** Missouri Hereford Association  
Annual Meeting and Banquet  
Sedalia, Missouri
- DEC 2** Missouri Opportunity Sale  
Sedalia, Missouri

### JANUARY

- JAN 4-6** Missouri Cattle Industry Convention  
& Trade Show  
Columbia, Missouri
- JAN 16** National Western Hereford Junior  
Show  
Denver, Colorado
- JAN 17** National Western Hereford Bull  
Show  
Denver, Colorado
- JAN 18** National Western Hereford Carload  
and Pen Show  
Denver, Colorado
- JAN 19** National Western Hereford Female  
Show  
Denver, Colorado
- JAN 23** MHN Contract Deadline & March Ad  
Space & Material Deadline
- JAN 29** MHN Camera-Ready March Issue  
Deadline

# WIDE RANGE BOVINE UNLIMITED

**Cody Washam**

30487 Hwy J • Wentworth, MO 64873

Cell: 417.489.5450

Email: [cwhsangus@hotmail.com](mailto:cwhsangus@hotmail.com)



**Turn Key Service**

Authorized Independent  
ABS Representative

Certified A.I. Technician

Mass Breeding and Synchronization

## Triple Threat = Structure, Performance, & Eye Appeal



**THA 2504Z SELINA 003F**  
Reg: 43887289 DOB: 2/09/18  
Sire: UPS Sensation 2504 ET



**THA KARINA J411**  
Reg: 43545841 DOB: 11/20/14  
Sells with Roll Tide heifer calf at side born 9/28/18

Selling in the Missouri Opportunity Sale • December 2, 2018 • Sedalia, MO

*Show Potential*

**Triple H Acres** 

The Jackson Family • Miller, Missouri  
Cell: (417) 827-1049 Ellen Cell: (417) 827-0338  
[triplehacres@live.com](mailto:triplehacres@live.com)

*Donor Potential*





**COWCO, INC.**

**LIVESTOCK EQUIPMENT**

www.cowcoinc.com

1(800) 240-3868

MO, Rep. Rick Washam

(417) 489-5455



**Midcontinent Livestock Supplements**

mlstubs.com

**PROVEN PERFORMANCE**



## LATE FALL AND WINTER SUPPLEMENTATION

- ▶ For Cattle Needing Both Protein and Mineral Supplementation.
- ▶ Contains *aspergillus oryzae* for more complete roughage breakdown.
- ▶ High Energy to extend fall grass, corn stalks or low quality hay.
- ▶ Weatherproof, no waste supplement delivery system.

**PROVEN PERFORMANCE FOR 31 YEARS**

**MLS #1**

**HI  
PERFORMANCE**

- ▶ Balanced concentration of vitamins, minerals, energy, and protein.
- ▶ For cattle needing both protein and mineral supplementation.
- ▶ Weatherproof, no waste supplement delivery system.

Joseph Woods  
660-341-5413

Jeff Anslinger  
816-244-7340

Gary West  
731-335-3023



# Cattle Management During Drought Supplemental Feeding

Eric Bailey, Assistant Professor State Beef Extension Specialist, Animal Science, University of Missouri Extension



During times drought, hay is overpriced, scarce and close to unaffordable for producers. Various alternative feedstuffs can be more economical choice than hay. However, unfamiliarity with the various feedstuffs available, along with lack of experience feeding to nutrient requirements as opposed to feeding to appetite often lead producers into challenging situations. Cost of the feedstuffs along with digestive upsets from misuse of unfamiliar feeds will be the largest drain on productivity and profitability. Below are a series of recommendations for various scenarios where substantial feed resources are imported into a livestock operation.

## First Limiting Nutrient During Drought

The first-limiting nutrient during drought is always energy. Producers will often want to talk about protein/mineral/vitamin shortages, yet the biggest concern is caloric intake. The goal in stretching tight pasture forage supplies during drought should be to maintain body condition and productivity in the cowherd. A significant hurdle for producers to overcome is the ability to feed cattle to meet nutrient requirements with restricted access to feed. The behavioral changes noted (acting hungry) often coerce producers into providing additional feed or utilizing bulky feeds that increase satiety while simultaneously not meeting nutrient requirements.

## Stretching Short Hay Supply

Minimize hay waste by any means possible. My recommendation is to feed one day's worth of hay at a time to the livestock. Unroll bales to allow simultaneous access to feed and limit hay allowance to 1.0% of cow body weight per day, even if the quality is very poor (last year's hay stored outside). Another option to limit hay intake is to restrict the time cattle have access to hay. Cattle with as little as four hours access to hay and a supplement can be quite productive. Make sure that there are enough "seats at the table" for every cow to eat. I recommend a bale for every eight mature cows. Aggressive cows will fight off others from getting to the hay ring when the time at the hay feeder is limited.

Pair restricted hay access with a 50:50 mix of grain and byproduct fed at a rate between 0.5 (pregnant) and 1.0% (lactating) of body weight per day and nutrient requirements should be met. There is NOT a need to get fancy in balancing the diet to all limiting nutrients. Make sure caloric and protein intake are adequate and worry about the rest later.

Situations like this make hay testing tremendously important, especially if you are unfamiliar with the hay purchased. The worst-case scenario is overpaying for hay that has no chance of meeting nutrient requirements. A drive down state highways gives the perception that producers are baling any and every forage resource available, regardless of quality. When hay producers put a singular focus on quantity to meet demand, quality (nutrient content) frequently suffers. Very poor quality forage is

likely deficient in protein and possibly deficient in energy, depending on if cattle are growing, lactating or pregnant. When crude protein is below 7%, cows will need 0.5-1.0 lbs of crude protein per day. One to two pounds of soybean meal (50% CP) will correct the deficiency, along with a host of other high-protein feeds.

## Comparing Costs of Feedstuffs

Hay is the closest analogue to pasture forage yet it is can be a wasteful feedstuff that is not nutrient-dense. A wise approach to cost effectively feeding through a drought is to compare feeds on a "Dollars per lb of TDN" basis.

Example: 50% TDN hay that costs \$0.05 per pound (\$100 per ton). It is worth \$0.10 per lb of TDN. Make a comparison across several feeds and a "best deal" in your area can be easily identified. Nutritionists use TDN as a proxy for energy content. The average cow in second trimester of gestation requires approximately 13 lbs of TDN per day. A cow nursing a 60-day-old calf will require 20 lbs of TDN per day.

## What to do if you are completely out of forage?

Soy hulls, peanut hulls, rice hulls, cottonseed hulls and even sawdust can effectively serve as forage replacements in a drought ration. They should be included in a diet at 25-50% of the diet on a dry matter basis. They need to be paired with more nutrient dense feedstuffs. If the rest of the diet was made up of a blend of distillers grains (an energy & protein source), that would make a reasonable "complete feed" without having to pay for a branded product. Shoot for a diet with 10% crude protein and 55-60% TDN.

## Limited Resources for Storing, Mixing and Distributing Purchased Feed

Hand feeding 100 cows every bite of feed they get out of five gallon buckets is a daunting task for producers, yet they often are not equipped to store commodity feeds (meals or pellets), let alone deliver those feeds to cattle in an efficient manner. I have gotten a number of questions about utilizing self-feeders that are filled up infrequently. The biggest concern with self-feeders is limiting feed consumption. Cattle will not generally eat more than 0.1% of body weight per day in salt, and it is frequently used as a limiter. Refer to the publication "Limiting Feed Intake with Salt in Beef Cattle Diets" from the University of Nebraska (<http://extensionpublications.unl.edu/assets/pdf/g2046.pdf>) for more information. Feed companies promote their complete feeds, which utilize proprietary intake limiters. It has been my experience that they are no more effective than utilizing high-fiber feeds or salt as an intake limiter. The other concern with self-feeders is waste. Wildlife often learn quickly that free feed is available from self-feeders. My preference is to hand feed a supplement or diet daily but I acknowledge that producers have not have access to that level of time or labor. Work with their individual situations to come up with an ideal strategy. Perhaps culling is a better strategy for producers with limited labor than

trying to feed through a drought.

## Commodity Feeds vs. Branded Feeds

Using individual commodities (corn, distiller's grains, gluten pellets, soy hulls, and wheat middlings) as feedstuffs is the recommended practice for producers who will have to purchase the majority of nutrients off farm during times of drought. However, this recommendation is not without several considerations. These feedstuffs are not commonly available in small quantities, which requires storage bins or other arrangements. Buying small quantities of feeds from far away takes the economic advantage away due to freight cost. Using commodities that are on farm already (grain crop) can work, if the producer has experience or information on utilizing high starch feeds in beef cattle diets.

Branded feed products marketed by feed companies are costly and not my preferred option, but they have a place. The feed companies add value to producers by formulating supplements and providing feeding management guidance. Feed tags will provide a recommended feeding rate. Some companies employ salespeople with considerable nutrition training. Professional nutritionists closely monitor these formulations. The company store keeps inventory on hand and makes it available in small quantities. To sum it up, feed companies



Situations like this make hay testing tremendously important, especially if you are unfamiliar with the hay purchased.

add value to beef operations by selling convenience. It is my professional opinion that convenience is a luxury that cannot be afforded during times of drought, but there is value in convenience for the small producer who has five farms in three counties, a job in town, kids in sports, and various other time commitments.



## CRUTSINGER HEREFORD FARM

Registered Herefords • Whitewater, Missouri



2018 Champion Hereford Cow-Calf  
SEMO District Fair Junior Show

### Commodity Sales and Trucking

Buy from us or book your own feed.

Our fleet of modern 45' belt trailers/livestock trailers haul corn gluten, pelleted soy hulls, distillers grains, cotton seed, and wet feeds. We deliver into flat storage or elevators.

Bulls and Females for Sale.  
Please call us to view our herd!

Livestock Trucking  
Feeders, Fats, Cows, Hogs  
Delivery to MO, KS, NE,  
OK, TX, SD



Call for your truckload needs!

## CRUTSINGER FEED & FREIGHT

AGRI-Commodity, INC. • Whitewater, Missouri  
Phone Office 573-794-1174 Larry Cell 573-979-9022  
Angie Cell 573-979-1706



### Final Thoughts

This article is not intended to be a comprehensive review of the technical aspects of meeting a beef cow's feed requirements during times of shortage. The goal is to strongly encourage producers to evaluate their situation and **TAKE ACTION** before cows lose significant nutrient reserves. Feeding through a drought is a great way to drain cash reserves in beef cattle operations but is a popular drought management practice. Utilizing

commodity feeds instead of branded products is a great way to minimize cost. Identifying the least cost feed per unit of nutrient needed (\$ per lb of TDN) is another highly recommended strategy. Before utilizing unfamiliar feedstuffs, be sure to check in with your local extension livestock specialist or reach out to state specialists for guidance on proper use. The cost-effective solution to the lack of feed resources is out there if a producer is willing to be creative and to ask for help.

## STRONG Cattlemen

51st Cattle Industry Convention

& Trade Show

Join us as we celebrate 51 years of Missouri cattlemen and cattlemen coming together to meet, learn and work to advance the beef industry at the 2019 Missouri Cattle Industry Convention & Trade Show.

January 4-6, 2019

Holiday Inn Executive Center - Columbia, Missouri



Industry Trade Show

Business Meetings

Cattlemen's College

BQA Certification



### Trade show booths available

For more information, contact Coby Wilson at [coby@mocattle.com](mailto:coby@mocattle.com)  
or (573) 499-9162 ext. 235

Register for the 51st Annual Missouri Cattle Industry Convention  
Registration forms available at [www.mocattle.com](http://www.mocattle.com) or in the Missouri Beef Cattleman magazine





District 1: Director - Amy Phillips

*Herefords with Performance, Muscle and Style*

**THOMPSON HEREFORDS**  
TOM, LAURA, MADELYN & BRYNLEE THOMPSON  
RHODA THOMPSON  
Amity, MO • 816-284-3276

Elite 8 Online Hereford Sale - October 8, 2018

District 2: Director - Brian Littleton

*Breeding for Excellence*

Offering Horned and Polled Genetics!  
Fall and Spring Bulls for Sale by Private Treaty!

**Belzer Farms**  
Browning, MO 64630  
Ted Belzer • 660-244-3333  
Tony Belzer • 660-734-8006  
April Miller • 816-305-7490  
aprilmiller1732@gmail.com

**Circle R Cattle Co.**  
*Polled and Horned Genetics*

**The Reynolds'**  
Dan, Rose, Danielle  
and Dalton Reynolds  
505 E. ELM  
HUNTSVILLE, MO 65259  
PHONE: 660-269-6949  
EMAIL: drr7wb@gmail.com

Annual Production Sale  
**SUNDAY, OCTOBER 21, 2018**

**REYNOLDS HEREFORDS**

Matt, Barb, Tye & Makayla  
1071 C.R. 1231 • Huntsville, MO 65259  
Matt Cell 660-676-3788 Barb 660-676-4788  
reynoldscattle@cvalley.net  
www.reynoldsherefords.com

*Offering Horned and Polled Genetics*

**Waters Farm**  
Glen, Kyla, Kristin & Grant Waters  
10316 K Highway  
Norborne, MO 64668  
660.484.3127 home phone  
660.707.3646 mobile phone  
gwaters@landolakes.com

District 3: Director - Mary Beth Ray

District 4: Director - Tim Bernt

**H&H Herefords**

Brad, Sherry & Justin Hurst  
Chris, Reba & Zakary Rapp  
17275 S. 1900 Rd.  
Nevada, MO 64772  
Brad 417.321.2350  
Sherry 417.321.0423  
h2herefords4@gmail.com

www.handsherefords.com

Brad, Sherry & Justin Hurst  
Chris, Reba & Zakary Rapp  
17275 S. 1900 Rd.  
Nevada, MO 64772  
Brad 417.321.2350  
Sherry 417.321.0423  
Email: brad@handshshowsupplies.com  
Email: sherry@handshshowsupplies.com

**H&H Show Supply**

**WEAVER LEATHER LIVESTOCK**  
Authorized Weaver Leather Livestock Dealer in Southwest Missouri

www.handshshowsupplies.com

**J Bar K Farms**  
Jerry and Katherine Arnold

16531 E. Militia Rd. • Nevada, MO 64772  
(417) 667-8730 (417) 667-1015

**Laze-D Herefords**  
Dennis and Sherry Michael  
17770 S. 425 Rd.  
Jerico Springs, MO 64756  
417-398-0019  
lazedherefords@hotmail.com

**Bakerville Cattle Co.**  
Jon and Debra Baker  
111 E. North  
Timewell, IL 62375  
217-653-7546

**Registered Red and Black Herefords Available**  
- Combining the best of both worlds -



**Day's Family Farm**  
 Pilot Grove, MO  
 Larry and Pam Day  
 660-834-4678 home • 660-621-0812 cell  
 ljd@illand.net




*Raising Hereford cattle for over 50 years*  
 www.daysfamilyfarm.com



Your source for performance-tested  
 Polled Hereford Bulls and  
 Quality Replacement Females

*Glengrove Farm*  
 www.glengrovefarms.com

Bob and Gretchen Thompson  
 12905 County Rd. 4010  
 Rolla, MO 65401  
 Home 573-341-3820  
 Cell 573-368-9557

**KAUFFMAN HEREFORD FARM**

908 Lomo Drive  
 Jefferson City, MO 65109

Dennis Kauffman  
 573-291-6744

Bob Kauffman  
 573-635-6632

EMAIL: dkauffman@aol.com

**LUDWIG FARMS**



Dale, Rhonda, Trent, Claire & Troy  
 Linn, MO  
 Phone: 573-338-6000  
 Email: ludwigdale@yahoo.com

**HERD SIRES**  
 Ludwig Catapult X-Box C21 ET  
 Ludwig Tank Game Day B65

**AI SIRES**  
 Kickstart Catapult Federal Red Bull  
 Hometown Trust R Leader Small Town Kid  
 Porterhouse Chippendale

**ROCKING F POLLED HEREFORDS**

Frank and Pam Flaspohler  
 222 County Road 402  
 Fayette, Missouri 65248  
 Phone: 660-537-4809  
 E-mail: fwf@rockingf.com



**PRODUCING POLLED HEREFORD SEEDSTOCK**



**Proven Genetics**  
**WF** Private Treaty  
 Offers Available

Bulls and Females for sale at Private Treaty

Matt Woessner  
 (573) 308-7006  
 matt@inv-rel.com

Mike Woessner  
 (573) 578-4050  
 mike@inv-rel.com

11975 County Road 3450 • St James, MO 65559  
 WWW.WOESSNERFARMS.COM

District 6: Director – Rick Steinbeck

**AMR** **Alex Roth**  
 Polled Herefords

Alce and Michaela Roth  
 Altenburg, MO  
 (573) 576-5141

Dale, Lindy & Anna Roth  
 Altenburg, MO  
 (573) 450-1214


Hereford and Charolais Cattle  
 Registered Hereford Cattle

**CRIDER FARM**  
 Since 1845



Polled Herefords

Bland, MO 65014 (573) 646-3883



**STEINBECK FARMS**

Approximately 35 Polled  
 Hereford and Red Angus  
 Bulls available annually

**Rick & Laurie Steinbeck**  
 2322 Drake School Rd • Hermann, MO 65041  
 Cell 573-680-0954 Home 573-237-2668

**DORRAN**  
 Marketing Inc.



*DorranMarketing.com*

**RYAN DORRAN** 403-507-6483  
 ryandorran@hotmail.com

**AUCTIONEER**





**ACES POLLED HEREFORDS**

Danny & Lila Fanning  
21245 Hawthorne Rd.  
Joplin, MO 64801  
C 417-499-6694  
dlfanning.acelivestock@yahoo.com



**Bulls and Females For Sale**



**Blue Ribbon Farms**

11768 W. Farm Rd. 34  
Walnut Grove, MO 65770

Jeff & Stephanie Rawie  
417-209-5538  
jeffrawie24@yahoo.com

Aaron & Kylie Noble

**See you at the 2018 shows**

**BPH**  
**BUTLER POLLED HEREFORDS**

Jimmie, Andrea & Joel Butler  
Cody & Jocelyn Washam  
417.732.6069 417.838.4095  
butlerpolledherefords@hotmail.com

Registered Polled & Horned Genetics



"Always breeding for a better one" 

**CHOATE**  
*Polled Herefords*

Mike, Cathy & Julie

5373 South 226th Road  
Pleasant Hope, MO 65725

Mike: 417-880-3925  
Julie: 417-298-5968  
choateherefords@gmail.com

**DUVALL**  
Polled Herefords

Gary and Frances Duvall  
1082 Hwy 97 • Lockwood, MO 65682  
417-232-4817 H 417-827-2163 C  
duvallherefords@keinet.net

**Herdsmen: Ryan Applegate 417-239-4123**

Holmes Hereford Farm  
Greg & Vicki Holmes  
56 State Hwy A  
PO Box 482  
Wheaton, MO 64874  
Phone: 417-652-7463  
Cell: 417-848-9010  
holmesfs@windstream.net



Horned & Polled  
Herefords

Visitors Are Always Welcome

**McConnell Farms**

Heifers and Bulls For Sale By Private Treaty

Darrell & Judy McConnell  
11524 West Farm Road 168  
Republic, MO 65738  
Phone: 417-732-7196

**McMillen's Toothacre Ranch**

Trent & Mary McMillen  
& Family  
9128 W. Farm Road 30  
Walnut Grove, MO 65770



417-788-2787 home 417-830-7257 cell

**R&L Polled Herefords**

4401 S. 200th Rd.  
Halfway, MO 65663

*Herd Sire Prospects  
Select Females*

Kody Agee  
Showman

Lendell Voris  
417-445-2461

District 8: Director – Travis McConaughy




**Evans Hereford Ranch**

Registered Polled and Horned Herefords


Mark, Kelly, Hannah and Rebekah Evans  
194 Delaware Lane • Squires, MO 65755  
Home: 417-265-3649 Cell: 417-683-7411  
Email: ehranch@yahoo.com

*www.moherefords.org*





**APH**  
**Aufdenberg Polled Herefords**  
*"Quality You Can Count On"*  
 Darrell & Karen Aufdenberg  
 Jackson, Missouri  
 (573) 270-6755 cell  
 aufdenbergd@yahoo.com



**Toby & Debby Dulworth**  
 270-224-2993  
**DOGWOOD FARM**  
**Herefords since 1964**  
**Pasture-Selected**  
 dogwood@brtc.net  
 2492 Kirkman, LaCenter, KY 42056

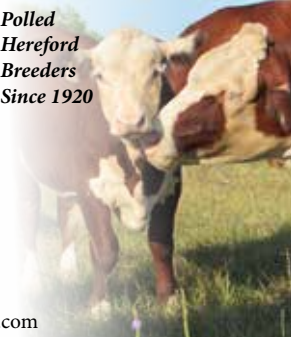


**LPH**  
**Lizzie's Polled Herefords**  
 Kenny, Michelle & Elizabeth Spooler  
 1788 County Road 347  
 Jackson, MO 63755  
 573-270-4145  
 lphspoolerfarms@aol.com


## Advertising Index

AbraKadabra Cattle Co.	Back Cover	Kauffman Hereford Farm	43
Aces Polled Herefords	44	Laze-D Herefords	42
Alex Roth Polled Herefords	43	Lilac Hill Polled Herefords	20
AMR	43	Lizzie's Polled Herefords	45
Aufdenberg Polled Herefords	18, 45	Ludwig Farms	43
Bakerville Cattle Co.	42	Malone Hereford Farm	45
Belzer Farms	29, 42	McConnell Farms	44
Blue Ribbon Farms	16, 44	McCorkill Family Farms	26
Bonebrake Registered Herefords	11	McMillen's Toothacre Ranch	30, 44
Butler Polled Herefords	44, 47	Midcontinent Livestock Supplements	39
Central MO Polled Hereford Breeder's Assoc	31	MO Hereford Opportunity Sale	11
Circle R Cattle Co.	42	Miller Herefords	25
Choate Polled Herefords	44	Mueller Farms	13
College of the Ozarks	46	Multimin USA, Inc.	35
Cowco, Inc.	39	Open Range Cattle Co.	47
Crider Farm	43	Phillips-Renner Farms	21
Crutsinger Hereford Farm/Crutsinger Feed & Freight	41	R&L Polled Herefords	44
Day's Family Farm	20	Rapp Premium Genetics	22
Dogwood Farm	45	Reed Farms	3, 36
Dorran Marketing Inc.	43	Reynolds Herefords	42
Doss Hereford Farms	18	Rocking F Polled Herefords	43
Duvall Polled Herefords	44	Roth Hereford Farm	29
Evans Hereford Ranch	44	Rural Route Creations	14, 37, 45
Falling Timber Farm	7	Steinbeck Farms	43
Glen Grove Farm	27, 43	Thompson Herefords	42
Gregory Hereford Ranch	36	Tri-L Polled Herefords	16
Gregory Polled Herefords	14	Triple H Acres	38
H&H Herefords	22, 42	Towner Farm	45
H&H Show Supply	42	Valley Oaks Steak Company	18
Hatchee Creek Farm	30	Waters Farm	42
Holmes Hereford Farm	44	Wide Range Bovine Unlimited	38
J Bar K Farms	42	Wirth Polled Herefords	22
Jim D. Bellis Family	19	WMC Cattle Co.	24
Kaczmarek 4K Herefords	2	Woessner Farms	18, 43
Kanza Cattle	45	Zoetis, Inc.	6

## Kansas





**Kanza Cattle**  
*Polled Hereford Breeders Since 1920*  
**Bulls & Females for Sale**  
**Foundation & maternal bloodlines with Wonder/Progress influence**  
 Lori Riffel Hambright & Family  
 Chapman, KS (2 hrs west of KC on I-70)  
 785-313-6565 • kanzacattlevines@hotmail.com



**MALONE**  
**Hereford Farm**  
 1371 Road F ~ Emporia, KS 66801  
 Phone/Fax: 620-342-7538  
 Alton's Cell: 620-794-2358  
 ammalone@lcwb.coop  
**Alton, Marie, Brian, Dustin and Michelle Malone**



**T TOWNER FARM**  
**HEREFORDS POLLED & HORNED**  
 John Towner  
 320 E. 47 Hwy  
 Girard, KS 66743  
 P: 620-724-6636  
 C: 620-249-6636  
 john@townerfarm.com  
**www.townerfarm.com**

**ATTENTION SENIORS!**  
 Now booking fun, outdoor, personalized sessions capturing what means the most to you!  
**Rural Route CREATIONS PHOTOGRAPHY**  
 Contact Jocelyn Washam 417-838-5546 to book a session!



# COFO MS SHEYENNES CHOICE D754

*Selling Dec. 2, 2018 in the Missouri Opportunity Sale  
Sedalia, MO*



Reg: 43754555 DOB: 10/22/2016 Polled  
Sire: TH 49U 719T SHEYENNE 3X

This moderate sized first calf heifer is a favorite pick from our young cows. She is out of 719T Sheyenne 3x sire and has a beautiful little Excede Z426 heifer at her side.



Excede Z426 heifer

## Mark your calendars!

**Annual Production Sale - November 30, 2019**

*held in Conjunction with the Central Missouri Polled Hereford Breeders Sale*



*"A Tradition That Works"*

**College of the Ozarks**

Point Lookout, Missouri

Tammy Holder (417) 342-0871

Our students are the backbone of our operation and we strive to raise breeding stock that are going to work hard to make producers money!



# STOUT, SOUND, & FUNCTIONAL

+ *Eye Appeal*



## **BPH ORCC 88X EL CHAPPO 4029E**

Reg: 43852860 • 04/10/2017 • Horned

Sire: NJW 98S R117 Ribeye 88X ET

Dam: GKB Nancy 29B ET

Grand Champion Bull at the 2018 Missouri State Fair and 2018 Tulsa State Fair

Contact us about semen and interest in the bull!



## **THANK YOU TO ALL OUR CUSTOMERS IN 2018**

*we appreciate your friendship and business and look forward to another great year!*

**MARK YOUR CALENDAR!**

*Maternal*  
**EXCELLENCE**

**ONLINE HEREFORD SALE**

## **Spring 2019**

*More information to come in early Spring!*

## **BUTLER POLLED HEREFORDS**

**Jimmie, Andrea & Joel Butler**

**Cody & Jocelyn Washam**

Republic, MO

417-838-4095 **Jimmie**

417-838-3665 **Joel**

417-489-5450 **Cody**



jocelyn.washam@hotmail.com

## **Open Range Cattle Co.**

**Kristin Allen • Rogers, AR**

816-729-6305

ksamizzou@yahoo.com



# Here's Your Opportunity to gain real donor potential!

Selling in the Missouri Opportunity Sale • December 2, 2018 • Sedalia, MO



**ABRA 6C 105C RUBY 62E**

Reg: P43862829 • 09/27/2017 • Polled

Sire: ABRA 16A Justice 6C ET

Dam: ABRA 435 Ruby 105C ET

Maternal powerhouse, sooner granddaughter. Dam was part of our Denver Champion heifer pen in 2017. She has so much capacity and rib shape, following in her maternal granddam HH Jewel 113 ET's footsteps. Look at her pedigree; Ladysport 78P, Sooner, Maxium, HH Advance 5139R. Don't miss this opportunity to purchase some highly sought after genetics. Calving ease top 5%. We will have her AI bred by sale date to our new herdsire, AH JDH Munson 15E ET who was Denver calf champion in 2018.

BW +0.7 WW +47 YW +77 SC +0.6 Milk +26 M&G +49 CHB \$108



**ABRA 1C 108C LADYSPORT 58E**

Reg: P43862830 • 09/07/2017 • Polled

Sire: ABRA 74Y Score 1C ET

Dam: ABRA 435 Ladysport 108C ET

Another special fall yearling heifer who is a 3/4 sib to 62E, destined to become a maternal legend. Body capacity, lots of pigment, sound on her feet and legs. Dam was part of our Denver Champion heifer pen in 2017. CHB top 5%. We will have her AI bred by sale date to our new herdsire, AH JDH Munson 15E ET who was Denver calf champion in 2018.

BW +4.9 WW +56 YW +92 SC +1.1 Milk +25 M&G +53 CHB \$118



Service Sire - AH JDH Munson 15E ET



Dams of 62E & 58E pictured - NWSS Champ Fall Pen

**AbraRadabra**  
Cattle Company

Mark, Terry and Sabrina Abramovitz  
Logan & Brianne Bishop

6969 Bass Lane • Columbia, MO 65201

(573) 864-7449 Terry Cell • (573) 864-6475 Mark Cell

telwing@gmail.com • www.abracattleco.com

**Visitors always welcome!**